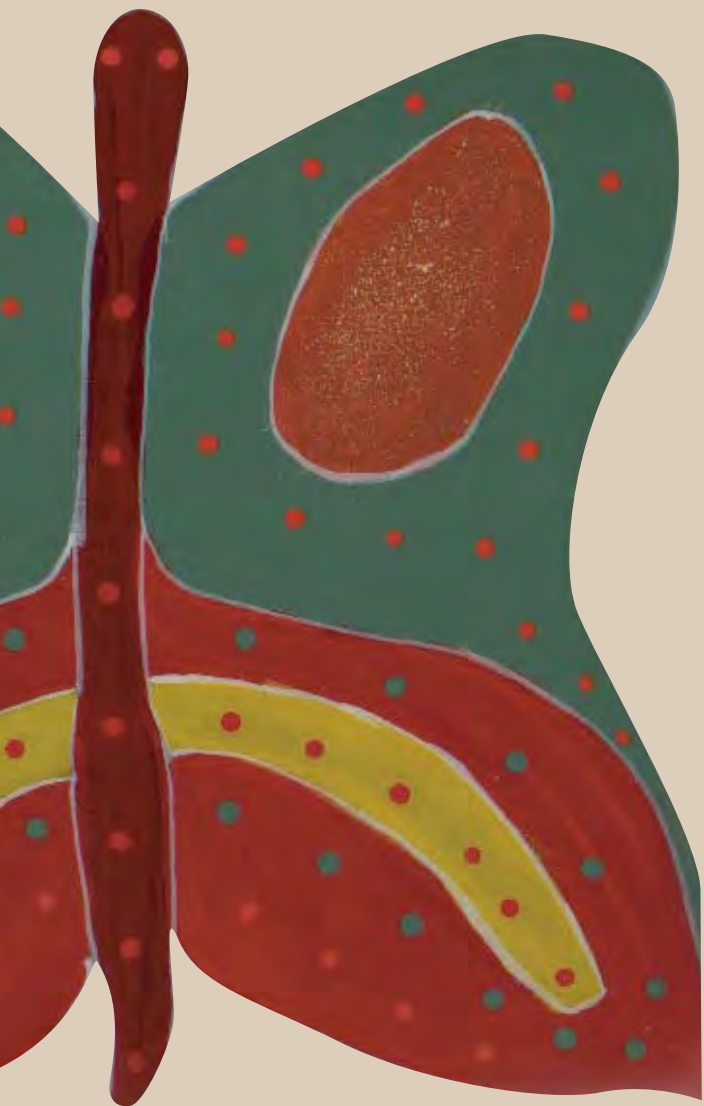


QUEENSLAND ABORIGINAL & ISLANDER
Health PARTNERSHIP

strategic plan
2004 - 2007



Working Together – A Fresh Approach

Cover Artwork designed by Mick Adams.

The butterfly symbolises unity, working together and being on the same flight path.



A MESSAGE FROM THE CHAIRPERSON

I am pleased to present this inaugural Strategic Plan 2004-2007 of the Queensland Aboriginal and Torres Strait Islander Health Partnership. A true partnership is one where all partners have equal capacity to engage and contribute to development, implementation, and evaluation of strategies to achieve mutual and agreed objectives. The mutual objective for the signatories to the Queensland Agreement on Aboriginal and Torres Strait Islander Health is to improve the health and wellbeing of Aboriginal and Torres Strait Islander people in Queensland to that at least commensurate of the wider Australian community.

A true partnership also relies on interdependence, with each partner bringing complementary resources to the relationship, as each cannot achieve alone what can be accomplished together. The balancing of power relationships is also the cornerstone of a true and effective partnership. This Strategic Plan has been developed in a time of great change in Aboriginal and Torres Strait Islander Affairs in Australia. I take this opportunity to acknowledge the work of the Aboriginal and Torres Strait Islander Commission in contributing to the implementation of the Queensland Agreement on Aboriginal and Torres Strait Islander Health since 1996.

I commend this Strategic Plan 2004-2007 to you and sincerely thank the Queensland Government, the Australian Government, and the Aboriginal and Torres Strait Islander Commission for contributing to this Strategic Plan.

Rachel Atkinson

Chairperson

Queensland Aboriginal and Torres Strait Islander Health Partnership

OUR VISION

To ensure that Aboriginal and Torres Strait Islander peoples enjoy a healthy life equal to that of the general population that is enriched by a strong living culture, dignity and justice.

OUR MISSION

The Queensland Aboriginal and Torres Strait Islander Health Partnership will work together to maximise the health system response to ensure that Aboriginal and Torres Strait Islander people determine their health and wellbeing; and facilitate community engagement and participation.

OUR PRINCIPLES

The Strategic Plan is governed by the principles of the *National Strategic Framework for Aboriginal and Torres Strait Islander Health: Framework for Action by Governments (2002)*:

- **Cultural respect:** ensuring that the cultural diversity, rights, views, values and expectations of Aboriginal and Torres Strait Islander peoples are respected in the delivery of culturally appropriate health services.
- **A holistic approach:** recognising that the improvement of Aboriginal and Torres Strait Islander health status must include attention to physical, spiritual, cultural, emotional and social well-being, community capacity and governance.

- **Health sector responsibility:** improving the health of Aboriginal and Torres Strait Islander individuals and communities is a core responsibility and a high priority for the whole of the health sector. Making all services responsive to the needs of Aboriginal and Torres Strait Islander peoples will provide greater choice in the services they are able to use.
- **Community control of primary health care services:** supporting the Aboriginal community controlled health sector in recognition of its demonstrated effectiveness in providing appropriate and accessible health services to a range of Aboriginal communities and its role as a major provider within the comprehensive primary health care context. Supporting community decision-making, participation and control as a fundamental component of the health system that ensures health services for Aboriginal and Torres Strait Islander peoples are provided in a holistic and culturally sensitive way.
- **Working Together:** combining efforts of government, non-government and private organisations within and outside the health sector, and in partnership with the Aboriginal and Torres Strait Islander health sector, provides the best opportunity to improve the broader determinants of health.
- **Localised Decision Making:** health authorities devolving decision making capacity to local Aboriginal and Torres Strait Islander communities to define their health needs and priorities and arrange for them to be met in a culturally appropriate way in collaboration with mainstream health services.

¹ *National Strategic Framework for Aboriginal and Torres Strait Islander Health (2002) Australian Health Ministers Conference.*

- **Promoting Good Health:** recognising that health promotion and illness prevention is a fundamental component of comprehensive primary health care and must be a core activity for specific and mainstream health services.
- **Building the Capacity of Health Services and Communities:** strengthening health services and building community expertise to respond to health needs and take shared responsibility for health outcomes. This includes effectively equipping staff with appropriate cultural knowledge and clinical expertise, building physical, human and intellectual infrastructure, fostering leadership, governance and financial management.
- **Accountability:** including accountability for services provided and for effective use of funds by mainstream health services. Governments are accountable for effective resource application through long-term funding and meaningful planning and service development in genuine partnership with communities. Ultimately, government is responsible for ensuring that all Australians have access to appropriate and effective health care.



ABOUT THE PARTNERSHIP

The Aboriginal and Torres Strait Islander Health Partnership has operated in Queensland since the first Framework Agreement on Aboriginal and Torres Strait Islander Health was signed in 1996. The Agreement was re-signed in June 2002.

The Queensland Aboriginal and Torres Strait Islander Health Partnership operationalises the commitments of the Agreement on Aboriginal and Torres Strait Islander Health in Queensland (2002) which is designed to improve the health status and wellbeing of Aboriginal and Torres Strait Islander peoples in Queensland to a level at least commensurate to that of the wider Australian community.

The aims of the Queensland Framework Agreement are to:

- Improve access to both mainstream and Aboriginal and Torres Strait Islander specific health and health related programs;
- Increase the level of resources allocated;
- Joint planning processes which will inform the allocation of resources; and
- Acknowledgment that any programs or models developed hereunder should not divert funds from community controlled health services.

OPERATIONAL FRAMEWORK

The Strategic Plan 2004-2007 outlines the strategic intention of the Queensland Aboriginal and Torres Strait Islander Health Partnership over the next three (3) years. The Plan is operationalised through Annual Workplans which identify the major initiatives which the Queensland Partnership will undertake in meeting its responsibilities under the Queensland Agreement on Aboriginal and Torres Strait Islander Health.

The Queensland Partnership acknowledges that it operates in a policy environment which encompasses national Aboriginal and Torres Strait Islander health and Queensland Aboriginal and Torres Strait Islander health initiatives which occur within a whole of government approach.

The Queensland Agreement on Aboriginal and Torres Strait Islander Health (2002) requires the establishment, under clause 3.6e, of Regional Health Forums which are underpinned by Regional Working Agreements between the key health stakeholders. The Regional Health Forums provide the link between the Queensland Partnership and priority setting in Aboriginal and Torres Strait Islander health at the regional level.

Queensland Health	
Senior Executive Director	Strategic Policy and Government Liaison Directorate
Director	Aboriginal and Torres Strait Islander Policy
Executive Director	Health Funding and Systems Development Branch
Aboriginal and Torres Strait Islander Commission	
Chairperson	Central Queensland Regional Council
Department of Health and Ageing (State Manager)	
Manager	Queensland
Director	OATSIH Queensland
Queensland Aboriginal and Islander Health Forum	
Chairperson	QAIHF
Executive	SouthEast Queensland
Executive	Central Queensland
Executive	South West Queensland
Executive	Far North Queensland
Executive	North West Queensland
Secretariat to the Queensland Partnership	
Queensland Partnership Officer	Queensland Aboriginal and Islander Health Forum

QUEENSLAND PARTNERSHIP PRIORITIES

The work of the Queensland Aboriginal and Torres Strait Islander Health Partnership is governed by the commitments of the Queensland Agreement on Aboriginal and Torres Strait Islander Health. The priorities of the Queensland Partnership from 2004-2007 are:

1. Improving Access to Health Services
2. Capacity Building
3. Joint Health Planning including with the non-health sector
4. Integrated Health Workforce Development and Planning
5. Data and Information Management
6. Quality Improvement
7. Health and Risk Factor Strategies
8. Monitoring and Evaluation

IMPLEMENTATION

Implementation of the Strategic Plan requires the combined efforts of Queensland Partnership members and other key stakeholders over a 3 year period.

The Queensland Partnership will develop a Workplan each year to measure implementation of the Strategic Plan in Queensland.

Regional Health Forums that include representation from the Commonwealth sector, State sector, the Community sector, and ATSIC will advise the Queensland Partnership on key issues in relation to the implementation process, health planning and service development. These forums will report each year on key actions within the Workplan for the implementation of the Strategic Plan.

REPORTING

The Queensland Partnership is responsible for reporting, on an annual basis, to the National Aboriginal and Torres Strait Islander Health Council (NATSIHC) and the Australian Health Minister's Advisory Council (AHMAC) on progress and evaluation concerning the implementation of the Aboriginal and Torres Strait Islander Health Framework Agreement in Queensland.

The partners to this Strategic Plan will report annually on progress against their respective areas of activity identified within the Workplan and these activities will be measured against agreed performance indicators.

EVALUATION

An audit of activity, progress and effectiveness of processes established under the Queensland Framework Agreement, including this Strategic Plan, will be undertaken two (2) years from the date when all parties signed the Queensland Framework Agreement. The evaluation will be jointly funded by the Commonwealth Department of Health and Ageing and the Queensland Department of Health.

QUEENSLAND ABORIGINAL & ISLANDER
HEALTH COUNCIL



Queensland Government
Queensland **Health**



Australian Government
Department of Health and Ageing

