

3. Acute Mental Health Inpatient Unit for Youth (10 Bed)

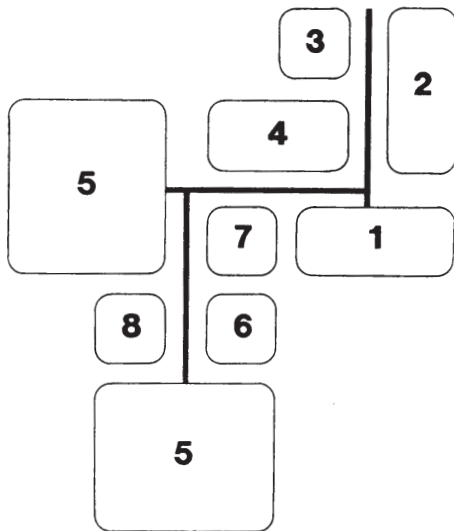
Functional Relationships

General issues

The functional diagrams shown below relate to the sub-units established in the Room Data Sheets. These generic conditions of relationship have been diagrammatically displayed for ease of communication. Specific interrelationships have not been shown.

Functional Diagram

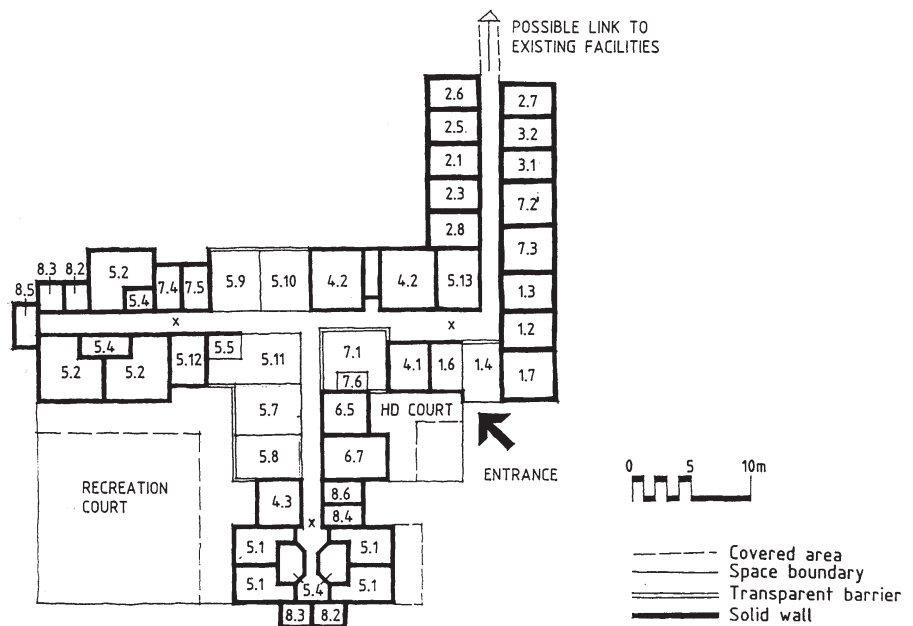
- 1 Admissions
- 2 Consulting/Allied Health
- 3 Nursing Staff
- 4 Specialist Areas
- 5 Consumer Areas
- 6 Consumer Areas (High Dependency)
- 7 Staff Facilities
- 8 Hotel Services



Room Legend

The following spaces and rooms are included in the generic design.

- | | |
|--|--|
| 1 Admissions Sub-unit | 5.7 Main Lounge |
| 1.2 Interview Room | 5.8 Music Lounge/
Night Lounge |
| 1.3 Examination Room | 5.9 Quiet Lounge |
| 1.4 Entrance | 5.10 Activities Room |
| 1.6 Waiting | 5.11 Dining Room |
| 1.7 Visitors Toilet | 5.12 Laundry |
| 2 Consulting/Allied Health Sub-unit | 5.13 Treatment Room |
| 2.1 Director's Office | 6 Consumer Areas (High Dependency) Sub-unit |
| 2.3 Registrar's Office | 6.5 Seclusion Room |
| 2.5 Psychologist | 6.7 Intensive Care Room |
| 2.6 Occupational Therapist | 7 Staff Facilities Sub-unit |
| 2.7 Social Worker | 7.1 Nurses' Station |
| 2.8 Administrative Staff | 7.2 Staff Lunch Room/Lounge |
| 3 Nursing Staff Sub-unit | 7.3 Staff Toilets/Change Room |
| 3.1 Nursing Manager | 7.4 Clean Utility Room |
| 3.2 Nurses' Office | 7.5 Dirty Utility Room |
| 4 Specialist Areas Sub-unit | 7.6 Medical Store |
| 4.1 Consulting Room | 8 Hotel Services Sub-unit |
| 4.2 Group Room/Observation | 8.2 Clean Linen Store |
| 4.3 Group/Interview Room | 8.3 Soiled Linen Store |
| 5 Consumer Areas Sub-unit | 8.4 Store (Patients' Effects) |
| 5.1 Single Bedroom | 8.5 Store (General) |
| 5.2 Double Bedroom | 8.6 Cleaner's Room |
| 5.4 Bathroom | |
| 5.5 Kitchen | |



Generic Layout Considerations

General issues

The diagrammatic plan shows the significant space relationships for this facility. These have been scaled for ease of reference. They do not represent a preferred layout but one possibility of several acceptable layouts.

Building Guidelines for
Queensland Mental Health Facilities

3

Section 3 Design Guidelines

3. Acute Mental Health Inpatient Unit for Youth (10 Bed)

Introduction

How to use this document

This guideline is intended to provide general information about this facility to potential designers, managers, service providers and others. This section should be read in conjunction with the General Principles (Section 2) and the Room Data Sheets (Section 4). The design information contained herein is generic and hypothetical. Readers should be aware of the implications of site requirements, budgets, management needs and the particular requirements of the service providers and consumers for a particular project.

The paragraphs included below contain information which is divergent from that contained in other parts of the general document. Where reference is made to individual space types or rooms, this information can be found in the Room Data Sheets. For more general objectives refer to the General Principles. Special and more specific information relating to this facility is listed below.

Facility type description

This facility provides accommodation for an Acute Care Inpatient Unit for Youth. The building is primarily a health treatment building but incorporates other ancillary uses. It includes areas for public use, admission and offices, care areas, consumers' residential areas, staff facilities and utility spaces. Provision should be made for carparks, private courtyards and delivery areas.

Facility usage

This facility caters for the use by consumers of the service, the service providers including nursing, medical and allied health professionals, non-government organisations, Queensland Health employees and other management service providers, hotel services, students, research visitors and the general public. Restrictions in access to the facility will apply to some of these users but the facility will be fully operational 24 hours a day all year round.

There will be generally three shifts per day for service providers and some support services. There is an expected provision for emergency services, including police and ambulance, to be on hand at the required times. The general public, management, hotel and other ancillary services will most likely be restricted to day and evening use.

The administration of care involves procedures which have some similarities with general hospital care, e.g. admission, examination, allocation of residential accommodation and the provision of services needed to maintain consumers' stay in the unit. In addition, there is a significant need for direct observation of consumer areas, especially in activity, living and dining areas and external spaces. Nurses' stations are the hub of most observation configurations, but there is a requirement that care is also available in all spaces used by consumers and that the designs do not encourage passive observation. Consumer spaces should reflect a variety of activities and offer numerous areas for individual respite, while still providing for care interaction.

Building design philosophy and general intent

This building should be designed to maximise the dignity of consumers while establishing appropriate levels of professional care and a therapeutic environment. The design should promote accessibility to all sections of society through the process of consultative design and by attention to environmental design processes, to produce equitable, comprehensible and sustainable buildings.

The facility will:

- Provide short-term treatment and relief of symptoms for young people, generally between the ages of 14 and 18 years, who present with acute episodes of mental illness.
- Provide a safe and therapeutic environment for return of health sufficient to enable the consumer to return to the community with appropriate support.
- Provide spaces for the administration of medical, psychological and social approaches to managing symptoms and for the education of the consumer, family and carers about the illness and recovery.
- Provide intensive care for consumers experiencing extremely acute phases of illness.
- Allow implementation of management strategies appropriate to the level of behavioural disturbance.
- Provide containment in specially prepared rooms for people who are at risk of harming others.

- Provide specialised services for specific groups such as Aborigines and Torres Strait Islanders, non english speaking background.
- Provide counselling spaces for consumers, families and carers.
- Provide facilities to ensure continuity of care in case management models. This will involve liaison between inpatient and community or other services, both at pre- and post-admission and at discharge planning.
- Provide consultation liaison to other areas of the hospital, e.g. medical or surgical wards.
- Provide space for families and carers to participate in treatment.

Economic sustainability of capital works and recurrent funding for mental health facilities place the onus on designers to provide efficiency in circulation and economy of functional areas. A fine balance between efficient design, longevity and low maintenance buildings, optimum bed numbers, optimum clinical staffing of care providers and effective personal and support services management will provide a "best model" facility.

Staffing Profile

General issues

The administration of care in this type of facility requires a model that involves nursing professionals at the centre of continuous care, with ongoing consultant support from medical officers, visiting psychiatrists, psychologists, social workers and occupational therapists, and with administrative support from clerical and management staff. Hotel services can be provided in the form of Queensland Health hotel services or as off-site contract provisions. Support from outside the service may be provided by non-government organisations, or informal public or family support. A large proportion of those using the facility will be visiting for limited times, generally during day and evening periods.

Schedule of user types

The following table gives an example of a mix of staff typical for this facility and is provided to establish a notional maximum number expected to be in the facility on the busiest shift.

User group	Maximum FTE for any single shift
Nursing	6
Allied Health	3
Medical	2
Administration	1
Support	3
TOTAL	15

General Design Principles

The following are special requirements in addition to the General Principles (Section 2).

Siting and site selection

- Preferably sited as a single-storey building adjacent to or co-located with an adult mental health or youth health facility as part of a general hospital campus.
- Sited adjacent to a lightly trafficked road or street and to landscaped parkland or other outlook.

Site layout

Preferably located on a single level on ground, although the unit may be located on upper levels if outdoor space can be safely provided by enclosed roof courts.

Security and privacy

Consumer areas should have defined separate courtyard areas, with attention to outdoor exercise and continuous observation by carers.

Landscaping treatments

The inclusion of outdoor play areas in the outdoor adjacent spaces is encouraged provided that the resulting activities can be managed, e.g. basketball hoops.

Interior design

Interior design should attend to variety and separate identity within separately defined living spaces. Living spaces should be of a scale and definition so as to reflect the feel or ambience associated with young people.

Interior elements

Behaviour of young people is often expressed by robust and destructive actions. Attention to robustness of surfaces and edges is required.

Signage and art

Signage and art should reflect themes associated with youth.

Schedule of Functional Areas

No.	Function Name	Req	m ² (min.)	Total	Remarks
1.0	Admissions			68	Sub-unit
1.2	Interview Room	1	12	12	
1.3	Examination Room	1	10	10	For 2 FTE+2m ² /FTE > 2
1.4	Entrance	1	15	15	+5m ² outside area
1.6	Waiting	1	15	15	For 8 users+2m ² /user >8
1.7	Visitors' Toilets	2	8	16	For 1 sex and disabled
2.0	Consulting/Allied Health			70	Sub-unit
2.1	Director's Office	1	12	12	
2.3	Registrar's Office	1	12	12	
2.5	Psychologist	1	12	12	
2.6	Occupational Therapist	1	12	12	
2.7	Social Worker	1	12	12	
2.8	Administrative Staff	1	10	10	For 1 FTE+5m ² /FTE > 1
3.0	Nursing Staff			20	Sub-unit
3.1	Nursing Manager	1	10	10	For 2 FTE+5m ² /FTE > 2
3.2	Nurses' Office	1	10	10	
4.0	Specialist Area			62	Sub-unit
4.1	Consulting Room	1	10	10	For 2 users
4.2	Group Room/ Observation	2	20	40	For 6 users : 15 max
4.3	Group/Interview Room	1	12	12	For 3 users
5.0	Consumer Areas			255.5	Sub-unit
5.1	Single Bedroom	4	12	48	
5.2	Double Room	3	20	60	
5.4	Bathroom	7	5.5	38.5	1 to 2 users each
5.5	Kitchen	1	10	10	Accessible to consumers
5.7	Main Lounge	1	15	15	+1m ² /bed
5.8	Music Lounge/ Night Lounge	1	10+5	15	+1m ² /bed
5.9	Quiet Lounge	1	15	15	
5.10	Activities Room	1	15	15	+1m ² /bed
5.11	Dining Room	1	15+5	20	+1m ² /bed (20 consumers max.)
5.12	Laundry	1	5+2	7	+0.2m ² /bed
5.13	Treatment Room	1	12	12	

No.	Function Name	Req	m ² (min.)	Total	Remarks
6.0	Consumer Areas (High Dependency)			30	Sub-unit
6.5	Seclusion Room	1	10	10	
6.7	Intensive Care Room	1	20	20	
7.0	Staff Facilities			77	Sub-unit
7.1	Nurses' Station	1	15+10	25	For 2 FTE+2.5m ² /FTE >2
7.2	Staff Lunch Room/ Lounge	1	15	15	12 users
7.3	Staff Toilets/ Change Room	1	15	15	Male and female
7.4	Clean Utility Room	1	8	8	+0.25m ² /bed > 10
7.5	Dirty Utility Room	1	8	8	+0.25m ² /bed > 10
7.6	Medical Store	1	6	6	
8.0	Hotel Services			31	Sub-unit
8.2	Clean Linen Store	2	4	8	+0.2m ² /bed
8.3	Soiled Linen Store	2	4	8	+0.2m ² /bed
8.4	Store (Patients' Effects)	1	2+3	5	+0.2m ² /bed
8.5	Store (General)	1	4+1	5	+0.2m ² /bed
8.6	Cleaner's Room	1	4+1	5	
	Sub-total			614	
	Circulation Storage and Misc. @25%			154	
	Carparking for 6 Cars (1 disabled)				+0.5/bed; 0.1/disabled; 0.1/visitors
	TOTAL			768	

Particular Space Considerations

General issues

This facility will most likely be built on an existing general hospital precinct. The nature of the facility care and proximity may allow the common use of support services, school rooms and other facilities.

Specific space management requirements

Where allied health and consulting medical services can be provided from established community mental health centres in close proximity, some office spaces from this sub-unit may be reduced or deleted.

The size of this facility warrants the inclusion of a small High-dependency Consumer Sub-unit that is able to be observed from the general nurses' station.

Young people are likely to require separate areas of respite and sleeping accommodation.

Please attach your list of specific requirements behind this document.