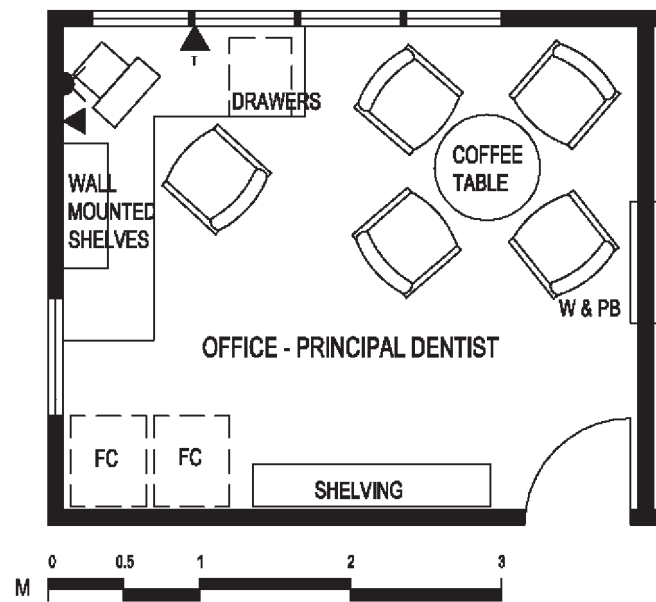
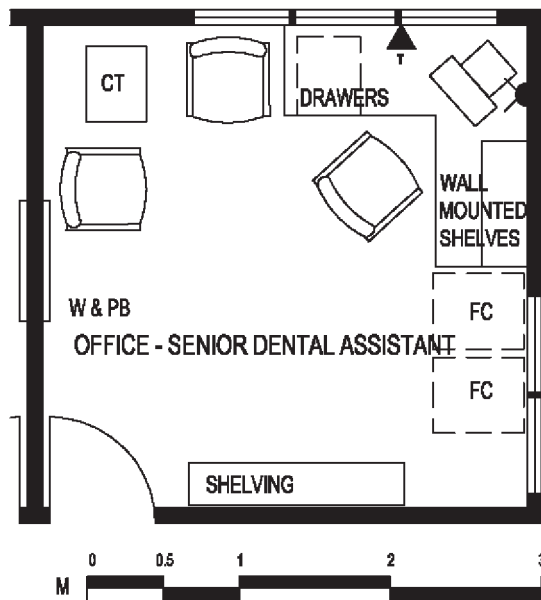


Indicative Plan



LEGEND	
T TELEPHONE / INTERCOM WALL HUNG
▼ TELEPHONE / INTERCOM WALL HUNG
W & PB	.. WHITE AND PIN BOARD
FC FILING CABINET
◼ DOUBLE GENERAL PURPOSE DATA OUTLET

Indicative Plan



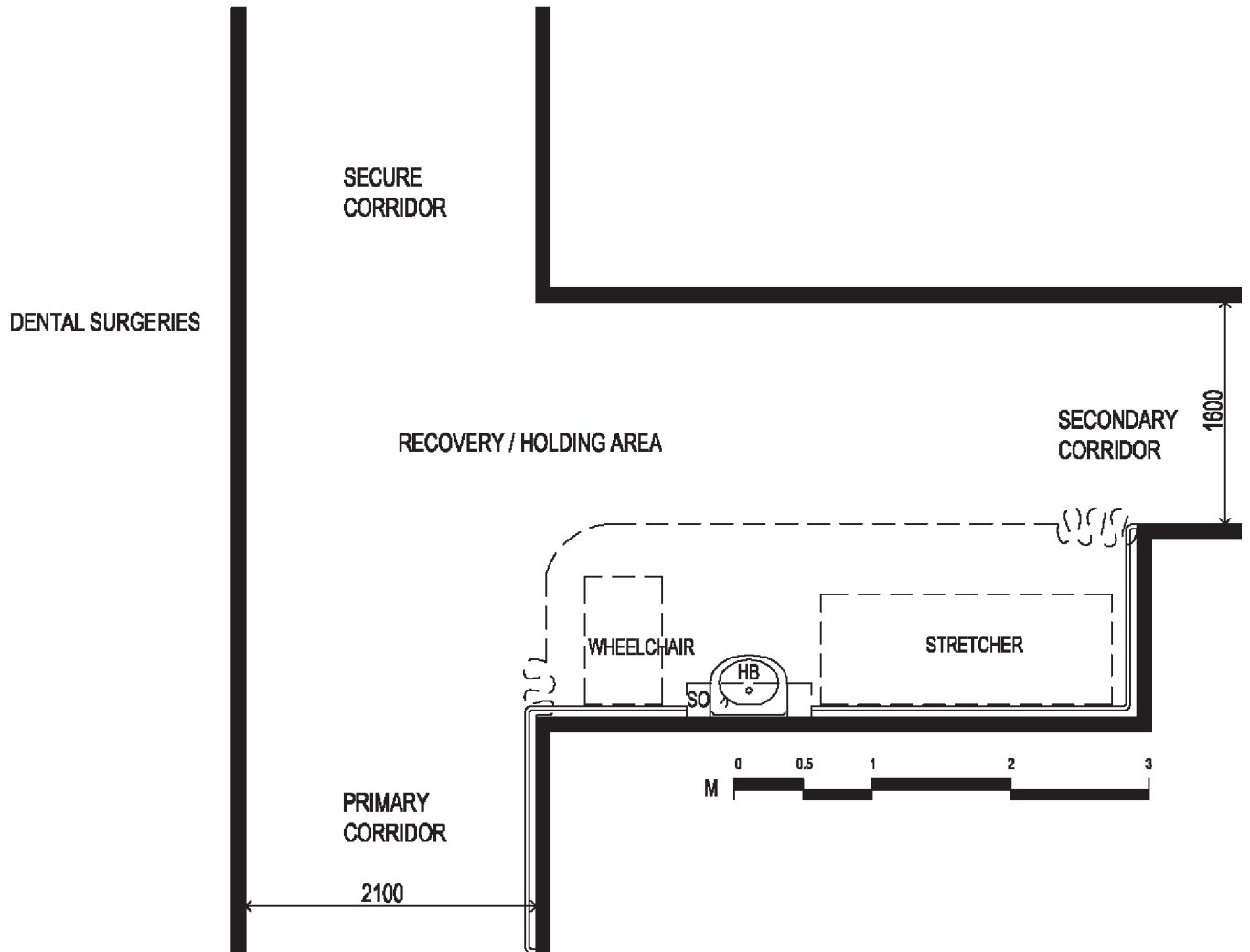
LEGEND	
T	DATA OUTLET TELEPHONE / INTERCOM
▼	DATA OUTLET TELEPHONE / INTERCOM
W & PB	WHITE AND PIN BOARD
FC	FILING CABINET
●	DOUBLE GENERAL PURPOSE OUTLET
CT	COFFEE TABLE

Recovery/Holding Area

Room Data Sheet

Functional Information			
Functions:	A screened area off the secure corridor for patient recovery.		
Relationship:	Locate centrally adjacent to dental surgeries.		
Floor Area:	5.5 m ² .		
Occupants:	Patients:	Staff:	Visitors:
Time of Use:	Business hours (8.00am to 5.00pm).		
Construction and Finishes			
Floors:	Sheet vinyl.	Skirtings:	Coved vinyl.
Walls:	13mm plaster board. Combined hand rail / buffer rail. (AS1428.1)		
Ceiling:	Acoustic.	Height:	2700mm
Doors:	N/A		
Door Hardware:	N/A		
Windows:	N/A		
Signage:	Project specific.		
Services and Environment			
Lighting:	Fluorescent.		
Power:	GPOs as required.		
Communications:	Assistance call.		
Gases:	N/A		
Sanitary Fixtures:	Hand basin with laminated splashback and wrist action taps.		
Environmental Control:	Air conditioning.		
Acoustics:	Acoustic ceiling.		
Furniture and Equipment			
Loose Furniture:	N/A		
Built In Furniture:	Hand rail to comply with AS 1428.1 Shelf for First Aid Kit.		
Equipment / Fittings:	Curtains and curtain track. Wheel chair. Stretcher trolley. Soap and paper towel dispenser. Glove dispenser.		

Indicative Plan



LEGEND	
HB	HAND BASIN
SO	SHELF OVER (FIRST AID)

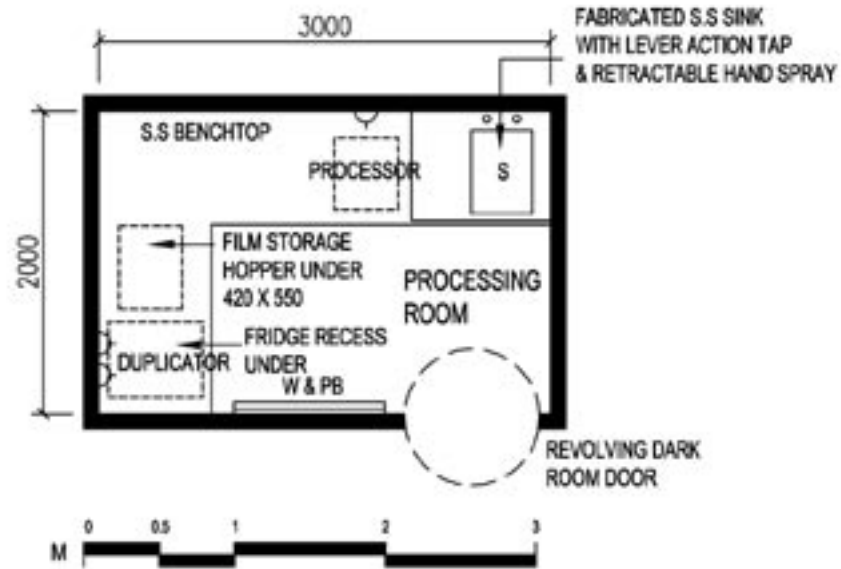
Orthopantomograph (OPG) and X-Ray Processing

Room Data Sheet

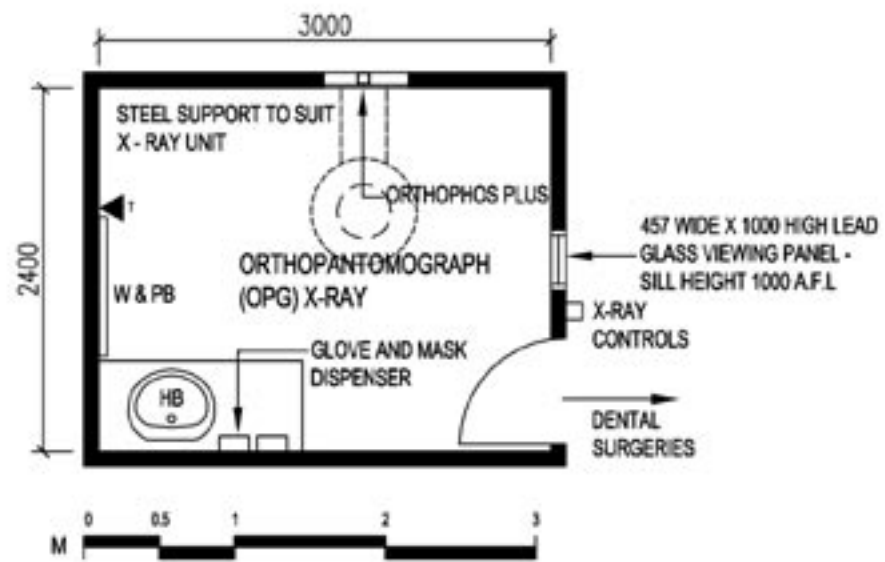
Functional Information			
Functions:	X-ray room for taking continuous film of the mouth. Room for processing x-ray film.		
Relationship:	Centrally placed adjacent to dental surgeries.		
Floor Area:	To suit equipment – approximately 7.20 m ² To suit equipment – approximately 6.0 m ²		
Occupants:	Patients: 1	Staff: 1	Visitors:
Time of Use:	Business hours (8.00am to 5.00pm).		
Construction and Finishes			
Floors:	Sheet vinyl	Skirtings:	Coved vinyl.
Walls:	13mm plasterboard flush set – BTS radiation shielding assessment required. 13mm plasterboard flush set		
Ceiling:	10mm plasterboard flush set.	Height:	2700mm
Doors:	Solid core - BTS radiation shielding assessment required. Revolving darkroom door (900mm)		
Door Hardware:	Lockable.		
Windows:	Lead glass viewing panel – 457 wide x 1000 high.		
Signage:	Room identification.		
Services and Environment			
Lighting:	Fluorescent. Fluorescent and 'safe light'.		
Power:	Power connections as required. GPO's as required.		
Communications:	Wall mounted telephone / intercom.		
Gases:	N/A		
Sanitary Fixtures:	Hand basin with wrist action taps. SS sink with wrist action taps and retractable hand spray.		
Environmental Control:	Air conditioning. Processing room exhaust ventilation.		
Acoustics:	N/A		
Furniture and Equipment			
Loose Furniture:	N/A		
Built In Furniture:	Bench with hand basin & cupboards under. SS bench top with sink.		
Equipment / Fittings:	Orthopantomograph X-ray. Film processor, under bench refrigerator. White & pin board.		

NB - OPG facilities should only be considered for larger clinics.

Indicative Plan



ROOM 2



ROOM 1

LEGEND

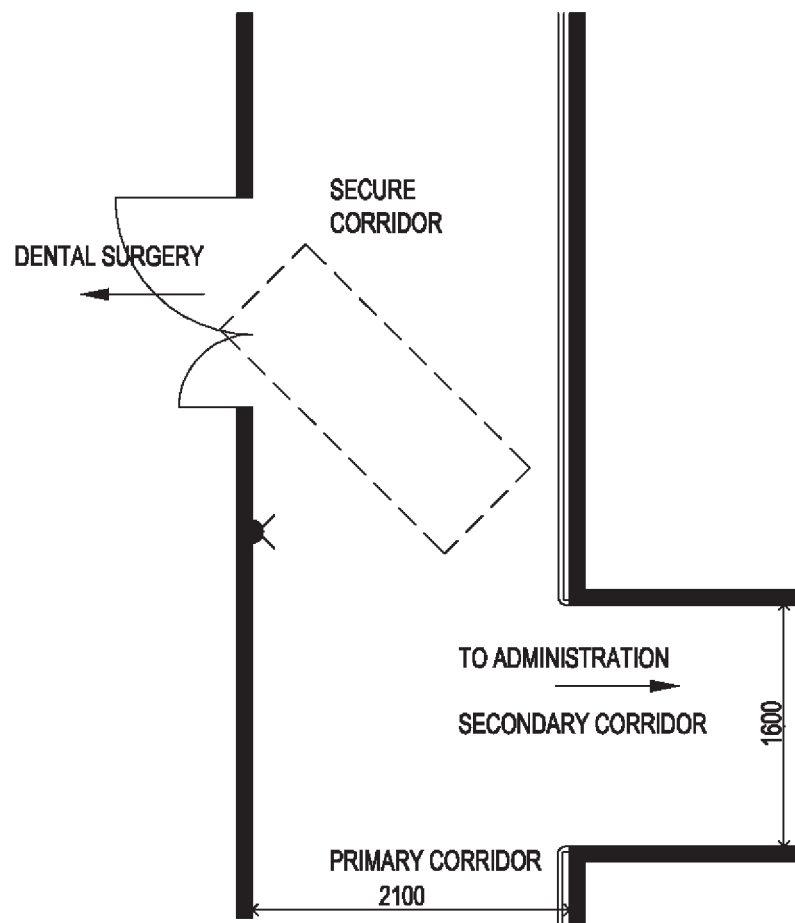
- TELEPHONE / INTERCOM WALL HUNG
- ORTHOPANTOMOGRAPH POWER CONNECTION
- WHITE AND PIN BOARD
- HAND BASIN

Corridors (secure)

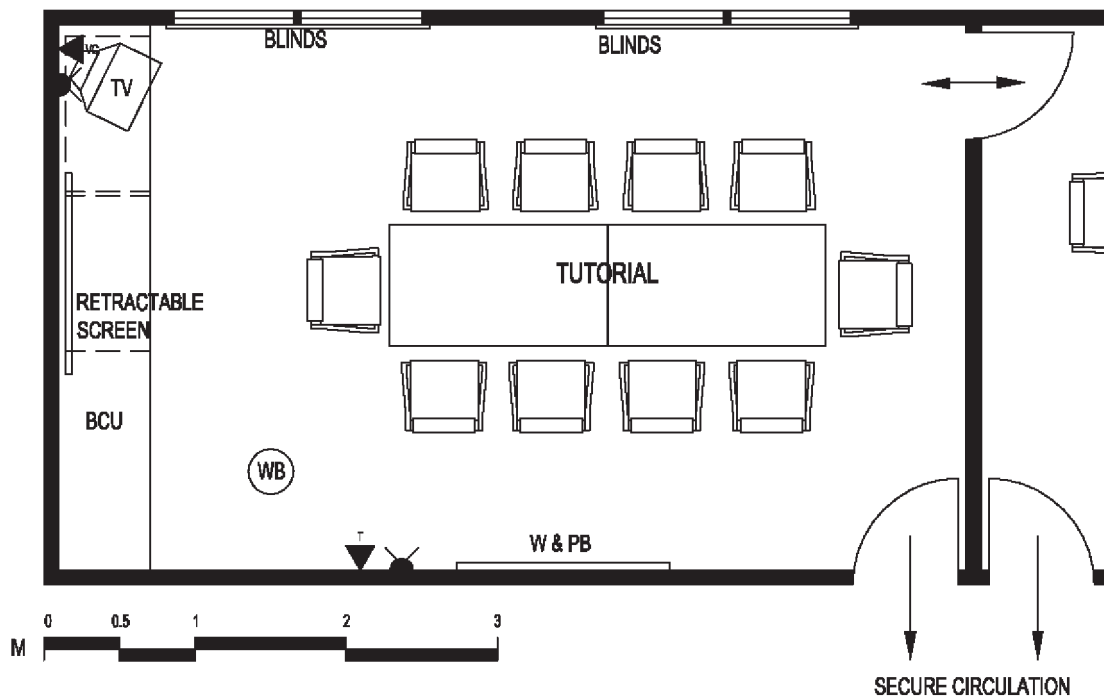
Room Data Sheet

Functional Information			
Functions:	Secure corridors used by staff. Patients will be escorted from the waiting area, through the security doors (key card or digital pad lock) to the dental surgeries, and escorted back to the waiting area at the end of their treatment.		
Relationship:	Internal corridors giving access to clinical, clerical and support areas.		
Floor Area:	Sufficient width to allow for wheelchairs, stretcher trolleys including the swinging of stretcher trolleys into dental surgeries. Primary corridors minimum width 2100mm including hand rail. Secondary corridors minimum width 1600mm (hand rail not required).		
Occupants:	Patients:	Staff:	Visitors:
Time of Use:	Business hours (8.00am to 5.00pm).		
Construction and Finishes			
Floors:	Sheet vinyl.	Skirtings:	Coved vinyl.
Walls:	13mm plaster board. Combined hand rail / buffer rail. (AS1428.1)		
Ceiling:	Acoustic.	Height:	2700mm
Doors:	Solid core with half glass (between corridor and waiting area) Solid core, door & a half, to dental surgeries. Small observation panel in large leaf.		
Door Hardware:	As required by relevant room data sheet.		
Windows:	Double glazed aluminium framed (openable) with internal Venetians.		
Signage:	Project specific.		
Services and Environment			
Lighting:	Fluorescent. Consideration should be given to light tubes in single story facilities (ESD).		
Power:	GPOs for cleaning (as appropriate).		
Communications:	N/A		
Gases:	N/A		
Sanitary Fixtures:	N/A		
Environmental Control:	Air conditioning.		
Acoustics:	Acoustic ceiling.		
Furniture and Equipment			
Loose Furniture:	N/A		
Built In Furniture:	Hand rail to comply with AS 1428.1		
Equipment / Fittings:	N/A		

Indicative Plan

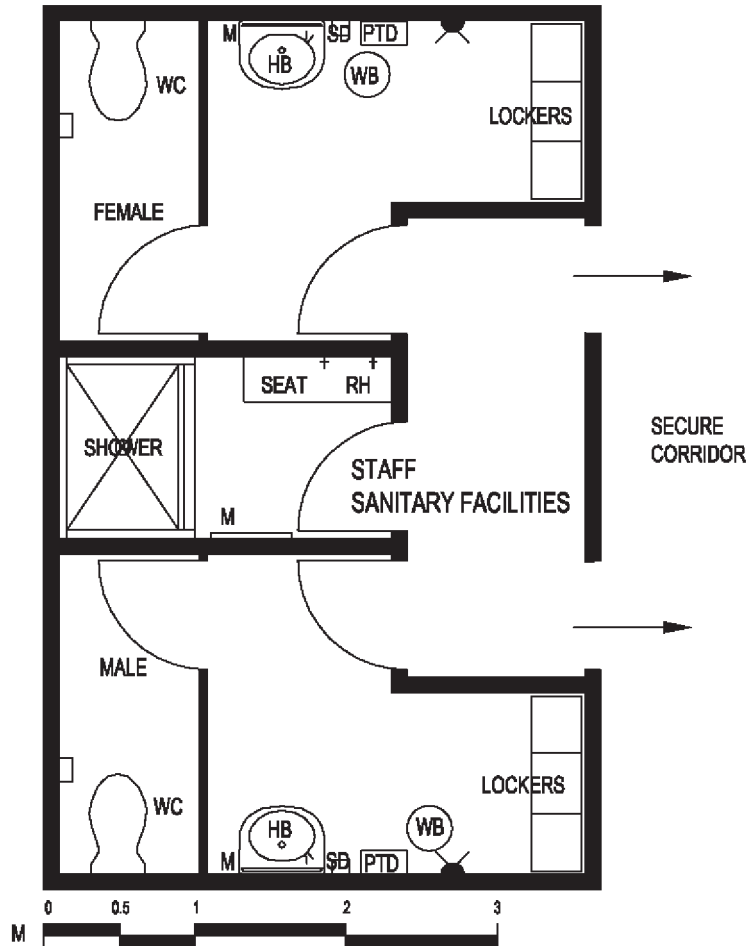


Indicative Plan



LEGEND	
TDATA OUTLET TELEPHONE / INTERCOM
W & PBWHITE AND PIN BOARD
WBWASTE PAPER BIN
TVTELEVISION
BCUBENCH WITH CUPBOARDS UNDER
DOUBLE GENERAL PURPOSE OUTLET

Indicative Plan



LEGEND	
TDATA OUTLET TELEPHONE / INTERCOM
W & PBWHITE AND PIN BOARD
REFREFRIGERATOR
BWUBOILING WATER UNIT
TTOASTER
MWMICROWAVE
HBHAND BASIN
SDSOAP DISPENSER
PTDPAPER TOWEL DISPENSER
BCUBENCH WITH CUPBOARDS UNDER
DOUBLE GENERAL PURPOSE OUTLET
GENERAL PURPOSE OUTLET