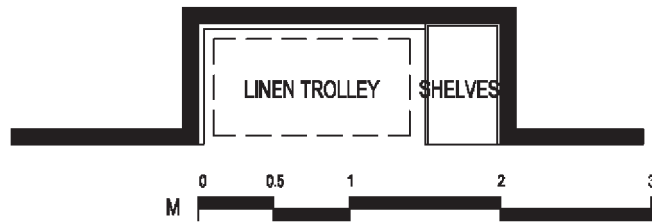
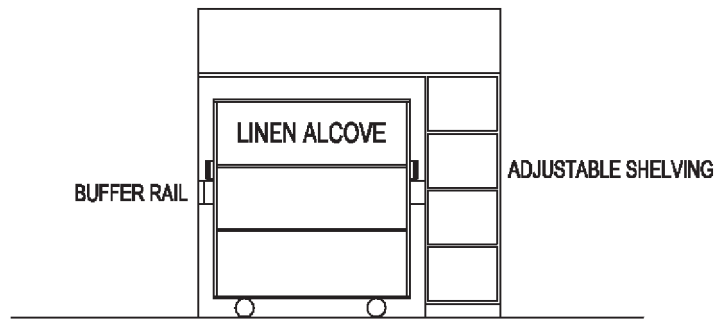


Linen Alcove

Room Data Sheet

Functional Information			
Functions:	Recess for linen trolley and linen items.		
Relationship:	Centrally off secure circulation corridor.		
Floor Area:	1.6 m ²		
Occupants:	Patients:	Staff:	Visitors:
Time of Use:	Business hours (8.00am to 5.00pm)		
Construction and Finishes			
Floors:	Sheet vinyl.	Skirtings:	Coved vinyl.
Walls:	13mm plasterboard with buffer rail.		
Ceiling:	10mm plasterboard.	Height:	To match doors head height.
Doors:	N/A		
Door Hardware:	N/A		
Windows:	N/A		
Signage:	N/A		
Services and Environment			
Lighting:	N/A		
Power:	N/A		
Communications:	N/A		
Gases:	N/A		
Sanitary Fixtures:	N/A		
Environmental Control:	N/A		
Acoustics:	N/A		
Furniture and Equipment			
Loose Furniture:	N/A		
Built In Furniture:	Open laminated shelves. Buffer rails.		
Equipment / Fittings:	Clean linen trolley (640 x 1290 x 1440H).		

Indicative Plan

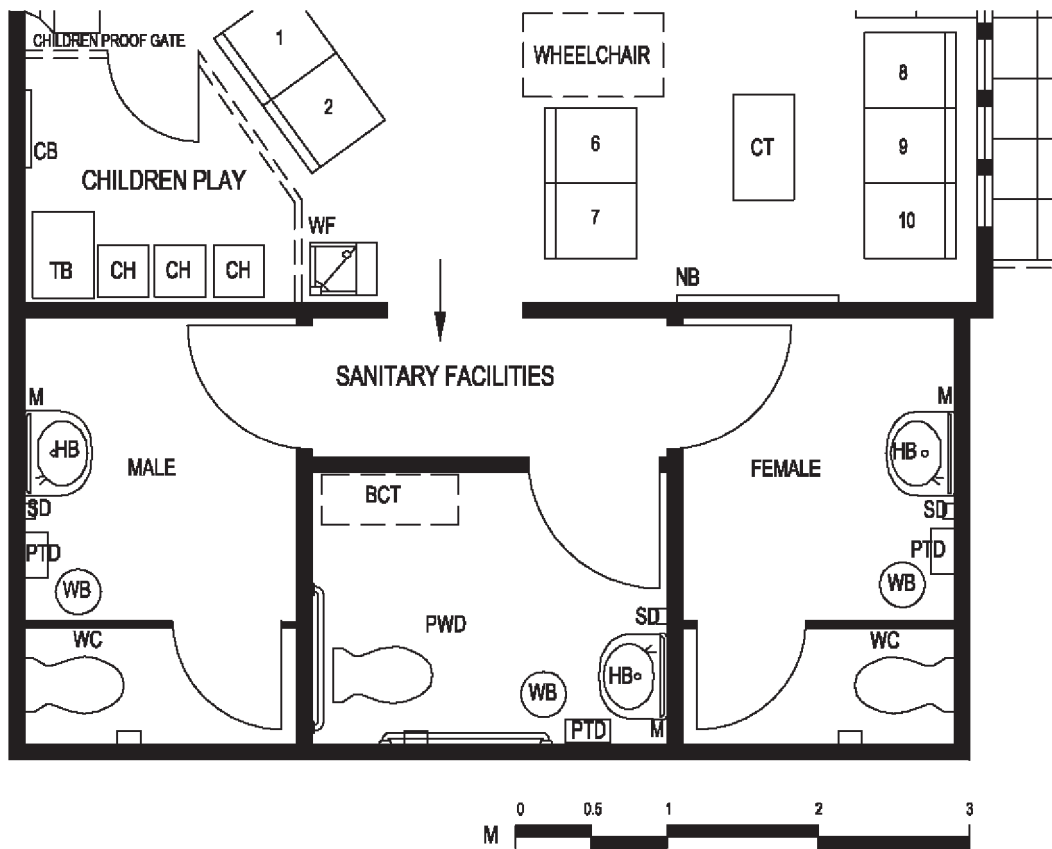


Consumer Sanitary Facilities

Room Data Sheet

Functional Information			
Functions:	Toilet facilities and baby changing facility.		
Relationship:	Adjoining Waiting area.		
Floor Area:	14 m ²		
Occupants:	Patients: 1	Staff:	Visitors:
Time of Use:	Business hours (8.00am to 5.00pm)		
Construction and Finishes			
Floors:	Slip resistant (SR) sheet vinyl.	Skirtings:	Coved vinyl.
Walls:	9mm FC flush set.		
Ceiling:	10mm plasterboard	Height:	2700mm
Doors:	Solid core.		
Door Hardware:	Occupancy indicator, rising butt hinges, closer.		
Windows:	Aluminium framed, high level opaque glass.		
Signage:	Room identification (PWD signage to AS 1428).		
Services and Environment			
Lighting:	Fluorescent.		
Power:	N/A		
Communications:	N/A		
Gases:	N/A		
Sanitary Fixtures:	Toilets. Hand basins with laminate splashback and wrist taps.		
Environmental Control:	Mechanical / natural ventilation.		
Acoustics:	STC 40		
Furniture and Equipment			
Loose Furniture:	Waste bins.		
Built In Furniture:	Fold down baby changing table.		
Equipment / Fittings:	SS grab rails. Mirrors. Liquid soap dispenser. Paper towel dispenser.		

Indicative Plan



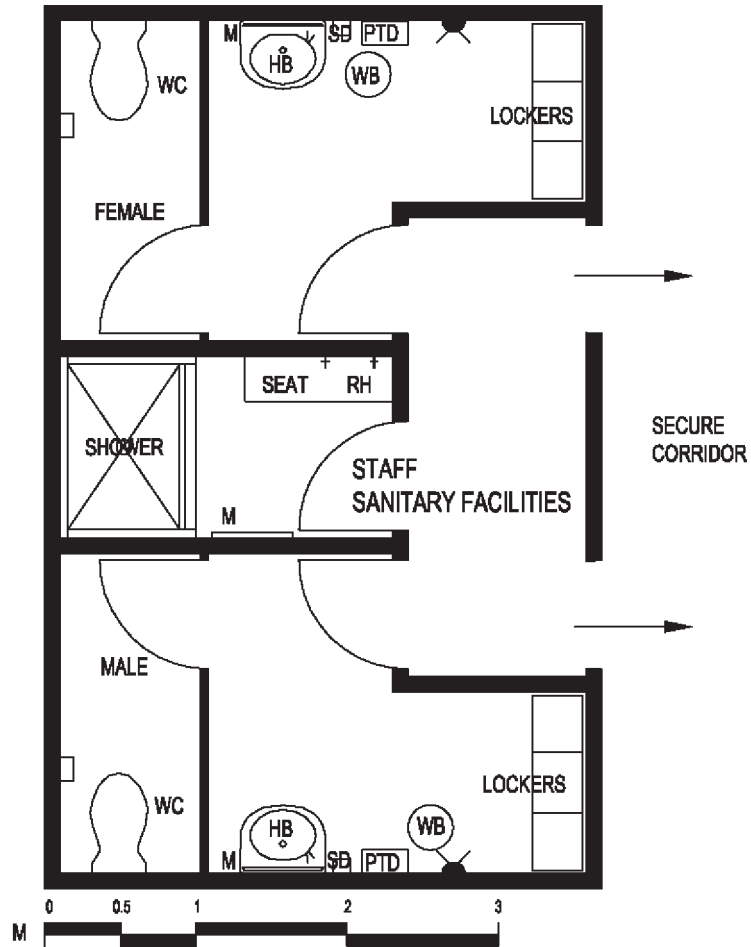
LEGEND	
HB	AND BASIN
SD	LIQUID SOAP DISPENSER
PTD.....	PAPER TOWEL DISPENSER
WB.....	WASTE PAPER BIN
BCT.....	FOLD DOWN BABY CHANGING TABLE
M.....	MIRROR AND SHELF

Staff Sanitary Facilities

Room Data Sheet

Functional Information			
Functions:	Toilet and change facilities.		
Relationship:	Direct access to secure corridor.		
Floor Area:	21 m ²		
Occupants:	Patients:	Staff: 1	Visitors:
Time of Use:	Business hours (8.00am to 5.00pm)		
Construction and Finishes			
Floors:	Slip resistant (SR) sheet vinyl.	Skirtings:	Coved vinyl.
Walls:	9mm FC flush set. Full height sheet vinyl to shower.		
Ceiling:	10mm plasterboard	Height:	2700mm
Doors:	Solid core.		
Door Hardware:	Occupancy indicator, rising butt hinges, closer.		
Windows:	Aluminium framed, high level opaque glass.		
Signage:	Room identification to AS 1428.		
Services and Environment			
Lighting:	Fluorescent.		
Power:	N/A		
Communications:	N/A		
Gases:	N/A		
Sanitary Fixtures:	Toilets, shower combination. Hand basins with laminate splashback and lever taps.		
Environmental Control:	Mechanical / natural ventilation.		
Acoustics:	STC 40		
Furniture and Equipment			
Loose Furniture:	Lockers, waste bins.		
Built In Furniture:	Seat.		
Equipment / Fittings:	SS grab rails. Liquid soap dispenser. Paper towel dispenser. Mirror. Robe hooks.		

Indicative Plan



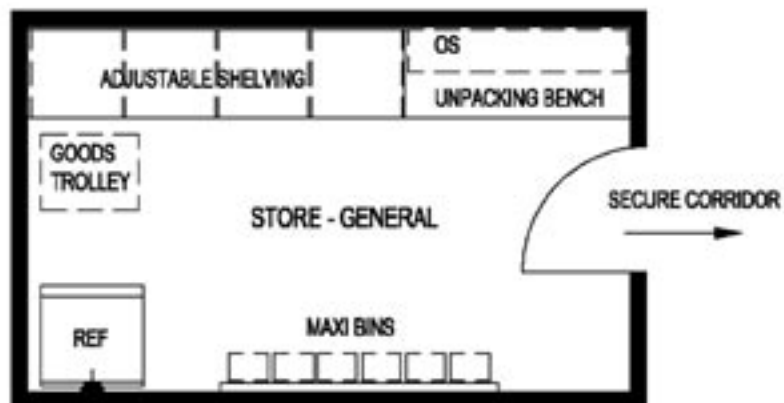
LEGEND	
	DOUBLE GENERAL PURPOSE OUTLET
	HAND BASIN
	PAPER TOWEL DISPENSER
	LIQUID SOAP DISPENSER
	WASTE PAPER BIN
	ROBE HOOKS
	MIRROR AND SHELF

Store – General

Room Data Sheet

Functional Information			
Functions:	Secure store for miscellaneous good and back-up supplies. Area for unpacking goods and supplies.		
Relationship:	Direct access to secure corridor. Close to goods reception area.		
Floor Area:	10 m ²		
Occupants:	Patients:	Staff: 1	Visitors:
Time of Use:	Business hours (8.00am to 9pm).		
Construction and Finishes			
Floors:	Sheet vinyl.	Skirtings:	Coved vinyl.
Walls:	9mm FC flush jointed.		
Ceiling:	10mm plasterboard.	Height:	2700mm.
Doors:	Solid core.		
Door Hardware:	Lockable with free handle exit, door stop.		
Windows:	N/A		
Signage:	Room identification.		
Services and Environment			
Lighting:	Fluorescent.		
Power:	GPO's as shown.		
Communications:	N/A		
Gases:	N/A		
Sanitary Fixtures:	N/A		
Environmental Control:	Air conditioning.		
Acoustics:	N/A		
Furniture and Equipment			
Loose Furniture:	N/A		
Built In Furniture:	Heavy duty adjustable shelving. Un-packing bench with shelf over.		
Equipment / Fittings:	Maxi bins. Goods trolley (supermarket). Refrigerator.		

Indicative Plan



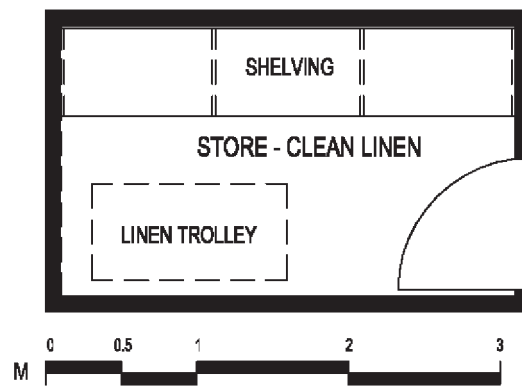
LEGEND	
OS	OVERHEAD SHELVING
REF	REFRIGERATOR

Store – Clean Linen

Room Data Sheet

Functional Information			
Functions:	Secure store for clean linen supplies.		
Relationship:	Direct access to secure corridor. Close to goods reception area.		
Floor Area:	5.4 m ²		
Occupants:	Patients:	Staff: 1	Visitors:
Time of Use:	Business hours (8.00am to 9pm).		
Construction and Finishes			
Floors:	Sheet vinyl.	Skirtings:	Coved vinyl.
Walls:	9mm FC flush jointed.		
Ceiling:	10mm plasterboard.	Height:	2700mm.
Doors:	Solid core.		
Door Hardware:	Lockable with free handle exit, door stop.		
Windows:	N/A		
Signage:	Room identification.		
Services and Environment			
Lighting:	Fluorescent.		
Power:	N/A		
Communications:	N/A		
Gases:	N/A		
Sanitary Fixtures:	N/A		
Environmental Control:	Air conditioning.		
Acoustics:	N/A		
Furniture and Equipment			
Loose Furniture:	N/A		
Built In Furniture:	Heavy duty adjustable shelving.		
Equipment / Fittings:	Linen trolley.		

Indicative Plan

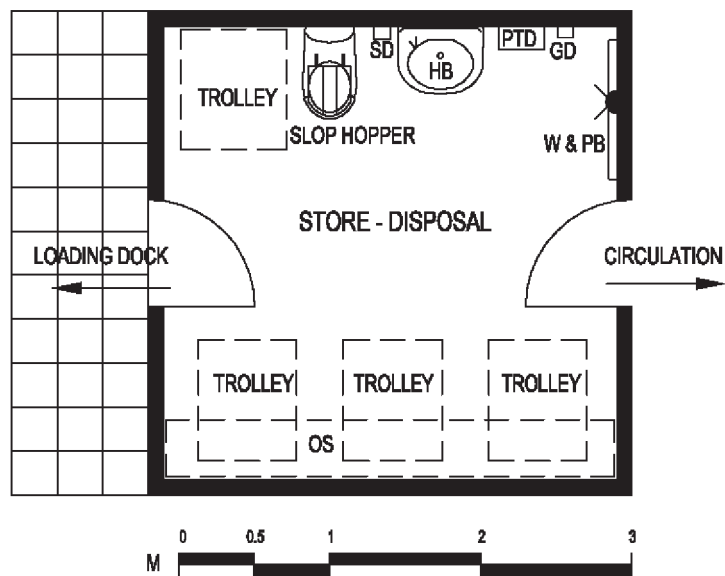



Store – Disposal

Room Data Sheet

Functional Information	
Functions:	Disposal of clinical items and rubbish.
Relationship:	Easy access to secure corridor and to loading dock.
Floor Area:	9 m ²
Occupants:	Patients: Staff: 1 Visitors:
Time of Use:	Business hours (8.00am to 9pm).
Construction and Finishes	
Floors:	Slip resistant (SR) sheet vinyl. Skirtings: Coved vinyl.
Walls:	9mm FC flush jointed. Sheet vinyl full height.
Ceiling:	6mm FC flush jointed. Height: 2700mm.
Doors:	Solid core, half glass door with obscure georgian wired glass.
Door Hardware:	Lockable with free handle exit, door stop.
Windows:	N/A
Signage:	Room identification.
Services and Environment	
Lighting:	Fluorescent.
Power:	GPO's as shown.
Communications:	N/A
Gases:	N/A
Sanitary Fixtures:	Slop hopper. Hand basin with wrist action taps.
Environmental Control:	Air conditioning (non-returnable).
Acoustics:	N/A
Furniture and Equipment	
Loose Furniture:	N/A
Built In Furniture:	Heavy duty stainless steel shelving.
Equipment / Fittings:	White & pin board. Liquid soap & paper towel dispensers. Glove dispenser. Wheeled bins .

Indicative Plan



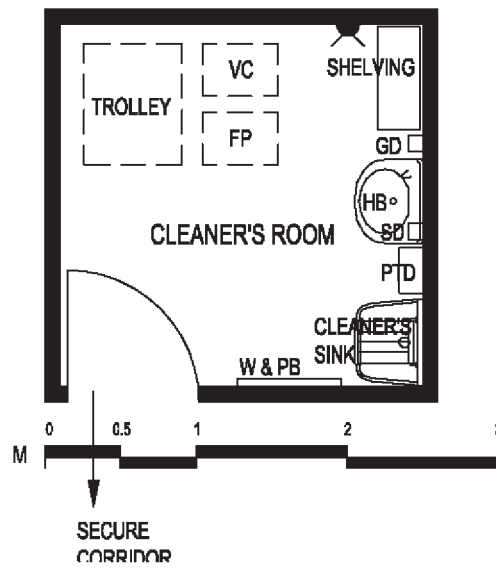
LEGEND	
W & PB	WHITE PIN BOARD
HB	HAND BASIN
SD	SOAP DISPENSER
PTD.....	PAPER TOWEL DISPENSER
GD.....	GLOVE DISPENSER
OS	OVERHEAD SHELVING
	DOUBLE GENERAL PURPOSE OUTLET


Cleaner's Room

Room Data Sheet

Functional Information	
Functions:	Secure area for storage of cleaning equipment.
Relationship:	Direct access to secure corridor.
Floor Area:	9 m ²
Occupants:	Patients: Staff: 1 Visitors:
Time of Use:	Business hours (8.00am to 9pm).
Construction and Finishes	
Floors:	Slip resistant (SR) sheet vinyl. Skirtings: Covered vinyl.
Walls:	9mm FC flush jointed. Sheet vinyl full height.
Ceiling:	6mm FC flush jointed. Height: 2700mm.
Doors:	Solid core door.
Door Hardware:	Lockable with free handle exit, door stop.
Windows:	N/A
Signage:	Room identification.
Services and Environment	
Lighting:	Fluorescent.
Power:	GPO's as shown.
Communications:	N/A
Gases:	N/A
Sanitary Fixtures:	Cleaners sink. Hand basin with wrist action taps.
Environmental Control:	Air conditioning (non-returnable).
Acoustics:	N/A
Furniture and Equipment	
Loose Furniture:	N/A
Built In Furniture:	Heavy duty adjustable laminate shelving.
Equipment / Fittings:	White & pin board. Liquid soap & paper towel dispensers. Glove dispenser. Cleaning equipment (vacuum cleaner, floor polisher). Cleaner's trolley.

Indicative Plan



LEGEND	
VC	VACUUM CLEANER
FP	FLOOR POLISHER
GD	GLOVE DISPENSER
SD	SOAP DISPENSER
PTD.....	PAPER TOWEL DISPENSER
W & PB	WHITE AND PIN BOARD
HB	HAND BASIN
	DOUBLE GENERAL PURPOSE OUTLET

Loading Bay / Goods Reception

Room Data Sheet

Functional Information			
Functions:	Reception of goods and equipment. Disposal of clinical items. Recycling of items and disposal of rubbish		
Relationship:	Good access to stores and disposal area. Loading bay maybe raised or at ground level (most delivery vans and trucks have facilities for delivering goods at ground level).		
Floor Area:	15 m ²		
Occupants:	Patients:	Staff: 1	Visitors:
Time of Use:	Business hours (8.00am to 9pm).		
Construction and Finishes			
Floors:	Slip resistant (SR) hardened concrete.	Skirtings:	N/A
Walls:	Project specific.		
Ceiling:	6mm FC flush jointed.	Height:	2700mm.
Doors:	Solid core, half glass door with obscure georgian wired glass.		
Door Hardware:	Lockable with free handle exit, door stop.		
Windows:	N/A		
Signage:	External signage.		
Services and Environment			
Lighting:	Fluorescent.		
Power:	N/A.		
Communications:	N/A		
Gases:	N/A		
Sanitary Fixtures:	Hose cock.		
Environmental Control:	Protective awning.		
Acoustics:	N/A		
Furniture and Equipment			
Loose Furniture:	N/A		
Built In Furniture:	Buffer rails.		
Equipment / Fittings:	Recycle bin & skip (Project specific).		

Indicative Plan

