

5. Where appropriate, the whole school physical environment is used for learning across a range of issues.

- no
 yes → up to date
 needs review → within next 3-6 months
 within next 12 months
 within next 2 years



11. health promoting school

1. There is an explicit plan to develop the school as a health-promoting organisation/environment.

- no
 yes → up to date
 needs review → within next 3-6 months
 within next 12 months
 within next 2 years

2. The plan covers social, emotional and physical aspects of health.

- no
 yes → up to date
 needs review → within next 3-6 months
 within next 12 months
 within next 2 years

3. The plan addresses issues across the three components of the curriculum, teaching and learning; the school organisation, ethos and environment; and partnerships and services.

- no
 yes → up to date
 needs review → within next 3-6 months
 within next 12 months
 within next 2 years

4. Staff, parents and students are actively involved in the development, implementation and review of this plan.

- no
 yes → up to date
 needs review → within next 3-6 months
 within next 12 months
 within next 2 years

5. The plan designates specific responsibilities.

- no
 yes → up to date
 needs review → within next 3-6 months
 within next 12 months
 within next 2 years

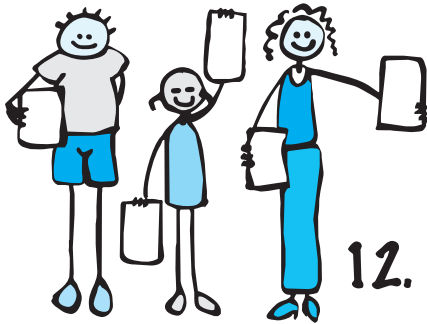
6. Progress is reviewed annually.

- no
 yes → up to date
 needs review → within next 3-6 months
 within next 12 months
 within next 2 years

7. A standard format (consistent with the comprehensive plan) is used for all planning/policy documents.

- no
 yes → up to date
 needs review → within next 3-6 months
 within next 12 months
 within next 2 years

8. There are policies/plans on specific issues (eg. bullying, sun safety, equal opportunity, nutrition, occupational health and safety, gender equity). These plans have the same features as the comprehensive plan.
- no
 yes → up to date
 needs review → within next 3-6 months
 within next 12 months
 within next 2 years



12. personal skills

1. Assertiveness skills are developed and modelled.
- no
 yes → up to date
 needs review → within next 3-6 months
 within next 12 months
 within next 2 years
2. Conflict resolution skills are developed and modelled.
- no
 yes → up to date
 needs review → within next 3-6 months
 within next 12 months
 within next 2 years
3. Self-esteem, resilience, good coping skills, healthy relationship skills are developed and modelled.
- no
 yes → up to date
 needs review → within next 3-6 months
 within next 12 months
 within next 2 years
4. Interpersonal skills are developed and modelled across a range of activities (including within the classroom, in sporting activities, in the school grounds...).
- no
 yes → up to date
 needs review → within next 3-6 months
 within next 12 months
 within next 2 years





13. emotional/psychological health

1. Open and safe discussion of emotional/psychological issues is encouraged.
 - no
 - yes → up to date
 - needs review → within next 3-6 months
 - within next 12 months
 - within next 2 years

2. Relaxation/stress relief skills and opportunities for students and staff.
 - no
 - yes → up to date
 - needs review → within next 3-6 months
 - within next 12 months
 - within next 2 years

3. A peer support program is in place.
 - no
 - yes → up to date
 - needs review → within next 3-6 months
 - within next 12 months
 - within next 2 years

4. Counselling referral is available for staff/students.
 - no
 - yes → up to date
 - needs review → within next 3-6 months
 - within next 12 months
 - within next 2 years

5. A co-operative approach to learning/games is encouraged.
 - no
 - yes → up to date
 - needs review → within next 3-6 months
 - within next 12 months
 - within next 2 years

6. Personal safety skills are developed.
 - no
 - yes → up to date
 - needs review → within next 3-6 months
 - within next 12 months
 - within next 2 years

7. Staff are trained in sensitivity to emotional/psychological issues.
 - no
 - yes → up to date
 - needs review → within next 3-6 months
 - within next 12 months
 - within next 2 years

8. The school minimises unnecessary stress on students/teachers.
 - no
 - yes → up to date
 - needs review → within next 3-6 months
 - within next 12 months
 - within next 2 years

9. A balance of independence, dependence and interdependence is encouraged.

- no
- yes → up to date
- needs review → within next 3-6 months
- within next 12 months
- within next 2 years

10. All staff and volunteers have undertaken training in Child Protection Policy.

- no
- yes → up to date
- needs review → within next 3-6 months
- within next 12 months
- within next 2 years

11. Grief and loss counselling is available.

- no
- yes → up to date
- needs review → within next 3-6 months
- within next 12 months
- within next 2 years

12. Staff, students and teachers are aware of the behaviour management policy.

- no
- yes → up to date
- needs review → within next 3-6 months
- within next 12 months
- within next 2 years

13. The school has a critical incident management plan.

- no
- yes → up to date
- needs review → within next 3-6 months
- within next 12 months
- within next 2 years



14. social environment

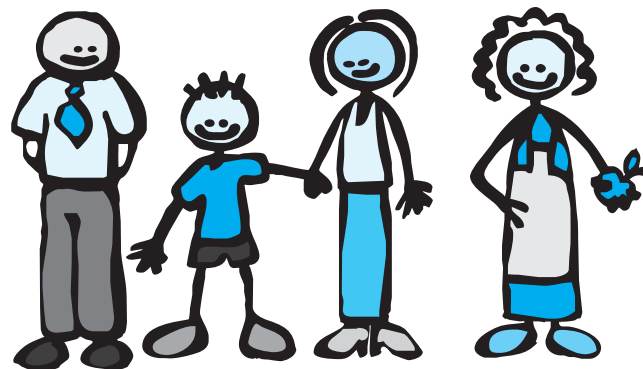
1. The school encourages discussion of major health and social issues and their relationship (eg. HIV/AIDS, drugs and alcohol, poverty, unemployment).

- no
- yes → up to date
- needs review → within next 3-6 months
- within next 12 months
- within next 2 years

2. The school upholds equity principles by ensuring that girls and boys have equitable access to school resources.

- no
- yes → up to date
- needs review → within next 3-6 months
- within next 12 months
- within next 2 years

3. The school has reviewed customs and practices prevailing within the school with respect to the utilisation of play space, access to computers, equipment, teacher time and other resources and, where necessary, taken action to redress inequities between girls and boys.
- no
 yes → up to date
 needs review → within next 3-6 months
 within next 12 months
 within next 2 years
4. A non-racist environment for students and staff is actively promoted.
- no
 yes → up to date
 needs review → within next 3-6 months
 within next 12 months
 within next 2 years
5. Violence and intimidation is not tolerated by anyone in any school activities.
- no
 yes → up to date
 needs review → within next 3-6 months
 within next 12 months
 within next 2 years
6. Religious/sectarian understanding is encouraged.
- no
 yes → up to date
 needs review → within next 3-6 months
 within next 12 months
 within next 2 years
7. Issues affecting the social health of staff and students are identified and addressed (such as gender equity, sexual harassment, domestic violence, bullying, etc).
- no
 yes → up to date
 needs review → within next 3-6 months
 within next 12 months
 within next 2 years



8. Physical and verbal violence is actively discouraged both among students and by staff towards students.
- no
 yes → up to date
 needs review → within next 3-6 months
 within next 12 months
 within next 2 years
9. The school organisation, ethos and environment is supportive of the mental health and social needs of students and staff.
- no
 yes → up to date
 needs review → within next 3-6 months
 within next 12 months
 within next 2 years

10. The school provides a fully inclusive environment in which all students are valued and differences are respected.
- no
 yes → up to date
 needs review → within next 3-6 months
 within next 12 months
 within next 2 years
11. Teachers are supportive of, and respectful towards, students.
- no
 yes → up to date
 needs review → within next 3-6 months
 within next 12 months
 within next 2 years
12. Students are supportive of, and respectful towards, teachers.
- no
 yes → up to date
 needs review → within next 3-6 months
 within next 12 months
 within next 2 years
13. Students are encouraged to participate in school decision-making processes.
- no
 yes → up to date
 needs review → within next 3-6 months
 within next 12 months
 within next 2 years
14. Students feel a sense of belonging to the school.
- no
 yes → up to date
 needs review → within next 3-6 months
 within next 12 months
 within next 2 years
15. The school provides a safe, stimulating and welcoming environment.
- no
 yes → up to date
 needs review → within next 3-6 months
 within next 12 months
 within next 2 years





15. community relationships¹⁴

1. Family and community involvement in the life of the school is fostered.
 - no
 - yes → up to date
 - needs review → within next 3-6 months
 - within next 12 months
 - within next 2 years

2. The school is involved in projects to develop the health of the local community.
 - no
 - yes → up to date
 - needs review → within next 3-6 months
 - within next 12 months
 - within next 2 years

3. Issues affecting the health of the local community are identified and discussed.
 - no
 - yes → up to date
 - needs review → within next 3-6 months
 - within next 12 months
 - within next 2 years

4. Relevant community groups and organisations are accessed to participate in school activities.
 - no
 - yes → up to date
 - needs review → within next 3-6 months
 - within next 12 months
 - within next 2 years

5. The school is proactive in linking with its local community.
 - no
 - yes → up to date
 - needs review → within next 3-6 months
 - within next 12 months
 - within next 2 years

6. The school informs the local community of its health initiatives (eg. through the use of local media, school open days, students providing 'healthy school' displays at community functions).
 - no
 - yes → up to date
 - needs review → within next 3-6 months
 - within next 12 months
 - within next 2 years

7. The curriculum contains health-related activities which involve children working with their families.
 - no
 - yes → up to date
 - needs review → within next 3-6 months
 - within next 12 months
 - within next 2 years

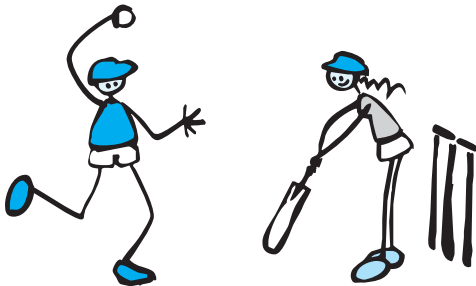
¹⁴ Do you have a local *Community Participation Officer* (Education Queensland) that you could be using?

8. Families are involved in decision making processes within the school.

- no
 yes → up to date
 needs review → within next 3-6 months
 within next 12 months
 within next 2 years

9. Families are involved in making decisions about suitable health-promoting activities (eg. food policies, the development of a school garden, physical activities).

- no
 yes → up to date
 needs review → within next 3-6 months
 within next 12 months
 within next 2 years



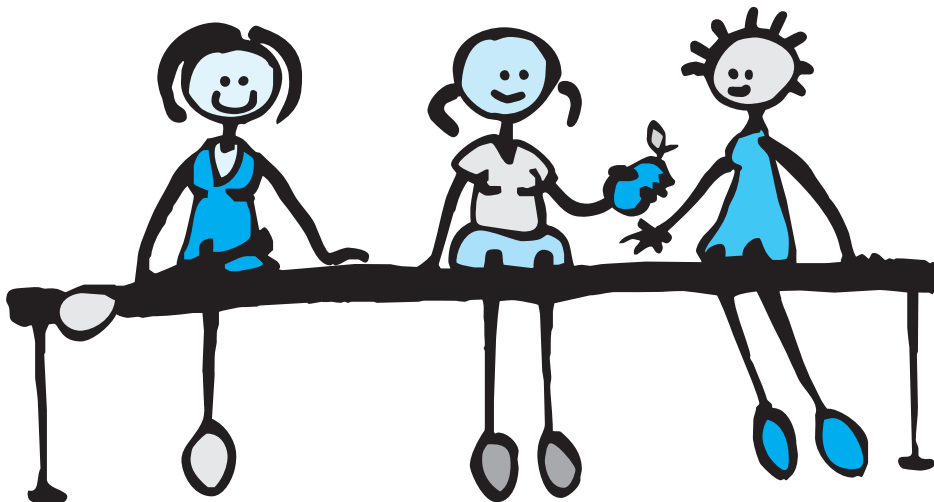
16. resources

1. **(to be completed by the Physical Education specialist)**

Attach figures from a current stock take of physical education and sport equipment in the school.

2. **(to be completed by the teacher-librarian)**

Attach a list of all health and physical education related resources that are held in the library.



This manual has been collaboratively developed by
Queensland Health with Education Queensland,
Brisbane Catholic Education Centre and
Association of Independent Schools — Queensland.
Reprinted 2005



Queensland Government

Queensland **Health**
Education Queensland