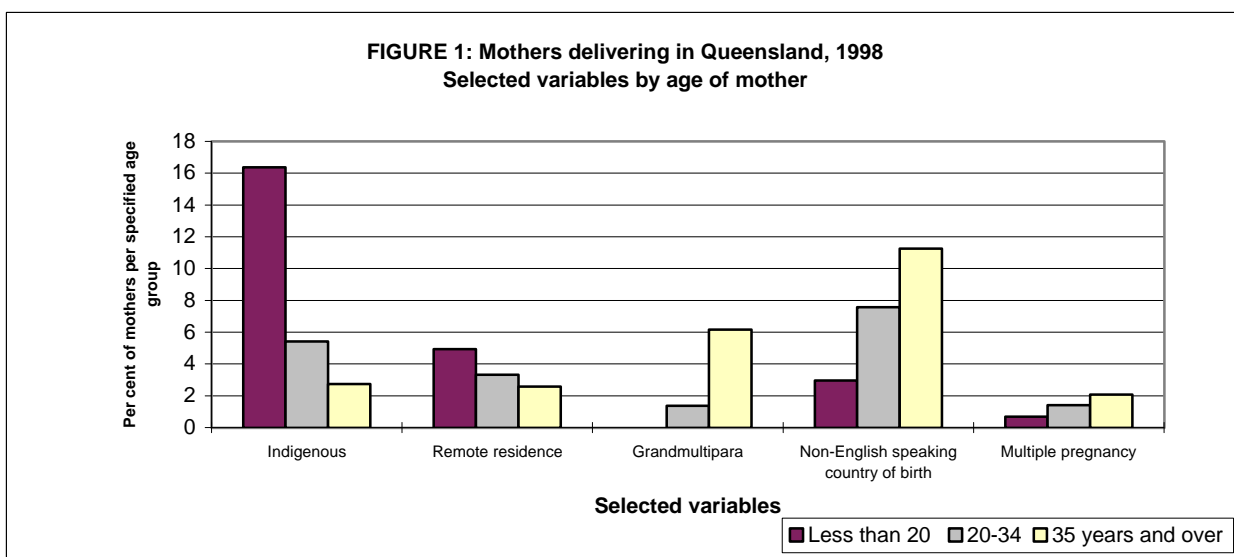


**MOTHERS DELIVERING IN QUEENSLAND, 1998
SELECTED VARIABLES BY AGE OF MOTHER**

Selected Variables	Age of mother (years)									
	Less than 18		Total under 20		20-34		35 and over		Total	
	No.	No.	No.	%	No.	%	No.	%	No.	%
Indigenous status of mother										
Indigenous	208	297	505	16.4	2,048	5.4	178	2.7	2,731	5.8
Non-indigenous	790	1790	2,580	83.6	35,797	94.6	6,336	97.2	44,713	94.2
Not stated	-	-	-	-	4	0.0	2	0.0	6	0.0
Total	998	2,087	3,085	100.0	37,849	100.0	6,516	100.0	47,450	100.0
Marital status of mother										
Single	652	957	1,609	52.2	3,867	10.2	310	4.8	5,786	12.2
Married/defacto	346	1,122	1,468	47.6	33,538	88.6	6,053	92.9	41,059	86.5
Other	-	8	8	0.3	443	1.2	152	2.3	603	1.3
Not stated	-	-	-	-	1	0.0	1	0.0	2	0.0
Total	998	2,087	3,085	100.0	37,849	100.0	6,516	100.0	47,450	100.0
Country of birth of mother										
Australia	935	1,889	2,824	91.5	31,868	84.2	4,974	76.3	39,666	83.6
Other English speaking	47	123	170	5.5	3,106	8.2	809	12.4	4,085	8.6
Non-English speaking	16	75	91	2.9	2,863	7.6	733	11.2	3,687	7.8
Other ^(a)	-	-	-	-	12	0.0	-	-	12	0.0
Total	998	2,087	3,085	100.0	37,849	100.0	6,516	100.0	47,450	100.0
Area of usual residence of mother ^(b)										
Urban	609	1,263	1,872	60.7	24,687	65.2	4,518	69.3	31,077	65.5
Rural	321	713	1,034	33.5	11,622	30.7	1,772	27.2	14,428	30.4
Remote	57	95	152	4.9	1,259	3.3	168	2.6	1,579	3.3
Other	11	16	27	0.9	281	0.7	58	0.9	366	0.8
Total	998	2,087	3,085	100.0	37,849	100.0	6,516	100.0	47,450	100.0
Number of previous deliveries										
None	917	1,564	2,481	80.4	14,706	38.9	1,322	20.3	18,509	39.0
One to four	80	523	603	19.5	22,620	59.8	4,792	73.5	28,015	59.0
Five or more	-	-	-	-	522	1.4	402	6.2	924	1.9
Not stated	1	-	1	0.0	1	0.0	-	-	2	0.0
Total	998	2,087	3,085	100.0	37,849	100.0	6,516	100.0	47,450	100.0
Plurality of pregnancy										
Singleton	991	2,073	3,064	99.3	37,318	98.6	6,381	97.9	46,763	98.6
Twin	7	14	21	0.7	512	1.4	129	2.0	662	1.4
Other multiple	-	-	-	-	19	0.1	6	0.1	25	0.1
Total	998	2,087	3,085	100.0	37,849	100.0	6,516	100.0	47,450	100.0

(a) Includes not stated country of birth and "Other" countries as per Table 4.05.

(b) "Other" includes interstate/overseas. "Rural" includes "Remote Major", ie. Mt Isa.

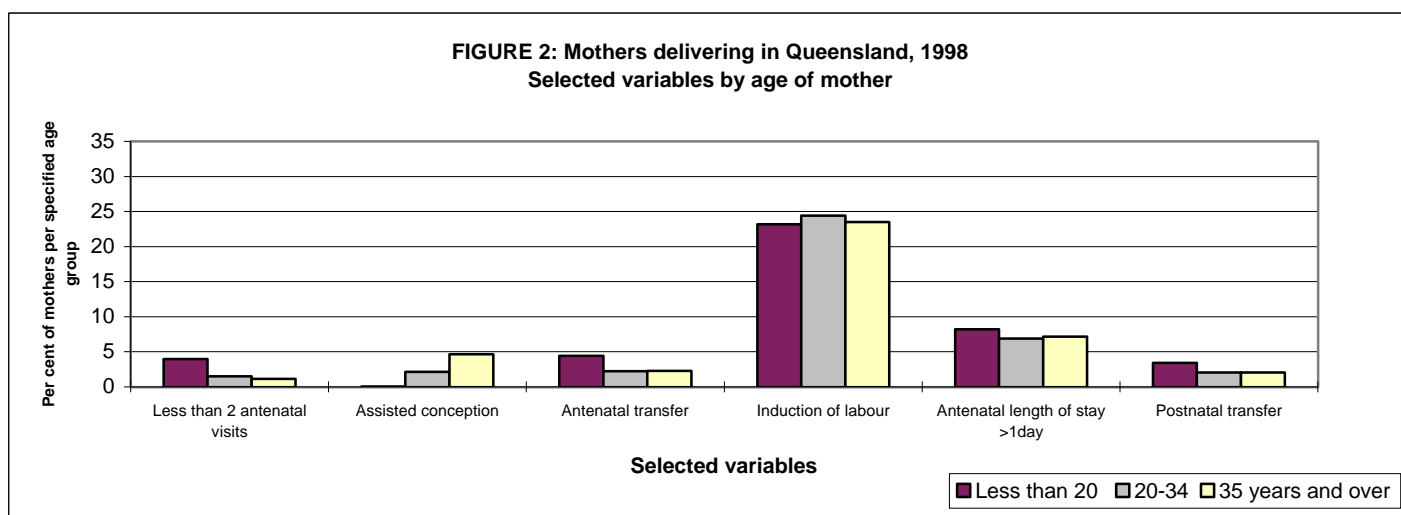


**MOTHERS DELIVERING IN QUEENSLAND, 1998
SELECTED VARIABLES BY AGE OF MOTHER**

Selected Variables	Age of mother (years)											
	Less than 18		18-19		Total under 20		20-34		35 and over		Total	
	No.	No.	No.	%	No.	%	No.	%	No.	%		
Number of antenatal visits												
Less than 2	54	69	123	4.0	563	1.5	74	1.1	760	1.6		
2 or more	943	2,018	2,961	96.0	37,272	98.5	6,436	98.8	46,669	98.4		
Not stated	1	-	1	0.0	14	0.0	6	0.1	21	0.0		
Total	998	2,087	3,085	100.0	37,849	100.0	6,516	100.0	47,450	100.0		
Type of antenatal care												
Public hospital/clinic	466	936	1,402	45.4	10,150	26.8	1,434	22.0	12,986	27.4		
Shared care	458	1,037	1,495	48.5	15,382	40.6	1,901	29.2	18,778	39.6		
Private medical practitioner	46	95	141	4.6	11,985	31.7	3,094	47.5	15,220	32.1		
Private midwifery practitioner	-	1	1	0.0	167	0.4	58	0.9	226	0.5		
Private medical & midwife practitioners	-	1	1	0.0	9	0.0	4	0.1	14	0.0		
No antenatal care	27	14	41	1.3	145	0.4	22	0.3	208	0.4		
Not stated	1	3	4	0.1	11	0.0	3	0.0	18	0.0		
Total	998	2,087	3,085	100.0	37,849	100.0	6,516	100.0	47,450	100.0		
Assisted conception												
Not assisted	997	2,085	3,082	99.9	37,022	97.8	6,213	95.3	46,317	97.6		
Assisted conception	-	1	1	0.0	813	2.1	302	4.6	1,116	2.4		
Not stated	1	1	2	0.1	14	0.0	1	0.0	17	0.0		
Total	998	2,087	3,085	100.0	37,849	100.0	6,516	100.0	47,450	100.0		
Type of facility from where mother was transferred before giving birth												
Homebirth	-	-	-	-	12	0.0	9	0.1	21	0.0		
Birth centre	-	3	3	0.1	106	0.3	13	0.2	122	0.3		
Public facility	59	73	132	4.3	692	1.8	109	1.7	933	2.0		
Private facility	-	1	1	0.0	31	0.1	18	0.3	50	0.1		
Not stated facility	-	-	-	-	2	0.0	1	0.0	3	0.0		
Not transferred ^(a)	939	2,010	2,949	95.6	37,006	97.8	6,366	97.7	46,321	97.6		
Total	998	2,087	3,085	100.0	37,849	100.0	6,516	100.0	47,450	100.0		
Accommodation type												
Not applicable - Planned homebirth	-	2	2	0.1	121	0.3	48	0.7	171	0.4		
Public	953	2,021	2,974	96.4	25,921	68.5	3,371	51.7	32,266	68.0		
Private shared/single	45	64	109	3.5	11,804	31.2	3,097	47.5	15,010	31.6		
Not stated	-	-	-	-	3	0.0	-	-	3	0.0		
Total	998	2,087	3,085	100.0	37,849	100.0	6,516	100.0	47,450	100.0		

(a) Includes not stated antenatal transfer.

**FIGURE 2: Mothers delivering in Queensland, 1998
Selected variables by age of mother**

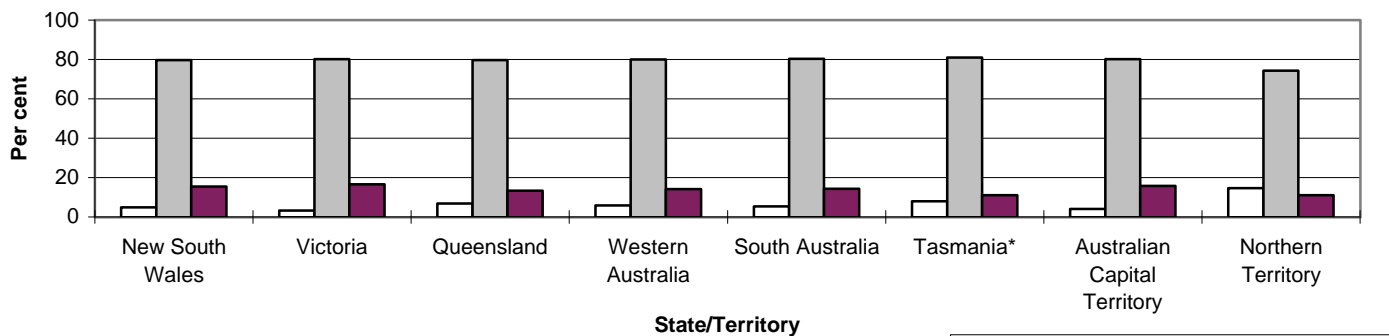


**MOTHERS DELIVERING IN QUEENSLAND, 1998
SELECTED VARIABLES BY AGE OF MOTHER**

Selected Variables	Age of mother (years)											
	Less than 18		18-19		Total under 20		20-34		35 and over		Total	
	No.	No.	No.	%	No.	%	No.	%	No.	%		
Selected pregnancy / medical complications ^(a)												
Pre-eclampsia	85	207	292	9.5	3,110	8.2	555	8.5	3,957	8.3		
Rupture of membranes >4 hrs before labour (<24 hrs before delivery)	52	140	192	6.2	2,291	6.1	373	5.7	2,856	6.0		
Asthma	48	105	153	5.0	1,376	3.6	190	2.9	1,719	3.6		
Rupture of membranes >24 hrs before delivery	32	84	116	3.8	1,259	3.3	211	3.2	1,586	3.3		
Gestational diabetes	9	18	27	0.9	1,020	2.7	384	5.9	1,431	3.0		
Infectious and parasitic diseases	41	88	129	4.2	1,093	2.9	172	2.6	1,394	2.9		
<i>Streptococcal infection</i>	15	39	54	1.8	472	1.2	61	0.9	587	1.2		
<i>Active genital herpes</i>	4	11	15	0.5	212	0.6	49	0.8	276	0.6		
<i>Viral hepatitis</i>	2	7	9	0.3	140	0.4	35	0.5	184	0.4		
<i>Syphilis</i>	2	7	9	0.3	48	0.1	5	0.1	62	0.1		
Antepartum haemorrhage, abruptio placentae and placenta praevia	29	71	100	3.2	1,059	2.8	226	3.5	1,385	2.9		
Haemorrhage in early pregnancy	7	39	46	1.5	874	2.3	166	2.5	1,086	2.3		
Disorder of thyroid gland	1	3	4	0.1	254	0.7	76	1.2	334	0.7		
Epilepsy	7	18	25	0.8	233	0.6	26	0.4	284	0.6		
Substance abuse	2	12	14	0.5	167	0.4	32	0.5	213	0.4		
Diabetes mellitus	4	4	8	0.3	141	0.4	34	0.5	183	0.4		
Intrauterine fetal death	3	6	9	0.3	120	0.3	20	0.3	149	0.3		
Suspected fetal anomaly	5	10	15	0.5	97	0.3	25	0.4	137	0.3		
Infection of amniotic cavity	2	3	5	0.2	70	0.2	12	0.2	87	0.2		
Cervical incompetence	-	-	-	-	43	0.1	9	0.1	52	0.1		
Total	998	2,087	3,085		37,849		6,516		47,450			
Length of antenatal stay (days)												
0-1	916	1,903	2,819	91.4	34,942	92.3	5,968	91.6	43,729	92.2		
2-7	67	155	222	7.2	2,181	5.8	357	5.5	2,760	5.8		
8-14	8	12	20	0.6	239	0.6	58	0.9	317	0.7		
15-21	4	2	6	0.2	101	0.3	23	0.4	130	0.3		
22 and over	1	4	5	0.2	84	0.2	28	0.4	117	0.2		
Not applicable- Planned homebirth	-	2	2	0.1	121	0.3	48	0.7	171	0.4		
Not applicable- Born before arrival	2	9	11	0.4	180	0.5	34	0.5	225	0.5		
Not stated	-	-	-	-	1	0.0	-	-	1	0.0		
Total	998	2,087	3,085	100.0	37,849	100.0	6,516	100.0	47,450	100.0		
Selected procedures and operations during pregnancy, labour & delivery, or the puerperium ^(a)												
Obstetric ultrasound	972	2,046	3,018	97.8	37,248	98.4	6,404	98.3	46,670	98.4		
Amniocentesis	3	7	10	0.3	440	1.2	1,457	22.4	1,907	4.0		
Removal of retained placenta	21	34	55	1.8	623	1.6	98	1.5	776	1.6		
Chorionic villus sampling	-	7	7	0.2	119	0.3	205	3.1	331	0.7		
Encirclement suture of cervix	-	-	-	-	91	0.2	25	0.4	116	0.2		
Total	998	2,087	3,085		37,849		6,516		47,450			
Onset of labour												
Spontaneous - not augmented	404	822	1,226	39.7	13,727	36.3	2,224	34.1	17,177	36.2		
Spontaneous - augmented	359	671	1,030	33.4	10,266	27.1	1,372	21.1	12,668	26.7		
Induced	208	507	715	23.2	9,238	24.4	1,531	23.5	11,484	24.2		
No labour	27	87	114	3.7	4,615	12.2	1,389	21.3	6,118	12.9		
Not stated	-	-	-	-	3	0.0	-	-	3	0.0		
Total	998	2,087	3,085	100.0	37,849	100.0	6,516	100.0	47,450	100.0		

(a) Reporting of multiple conditions/procedures permitted.

**FIGURE 3 : Mothers delivering in Australia, 1997
Age of mother by State/Territory of delivery**



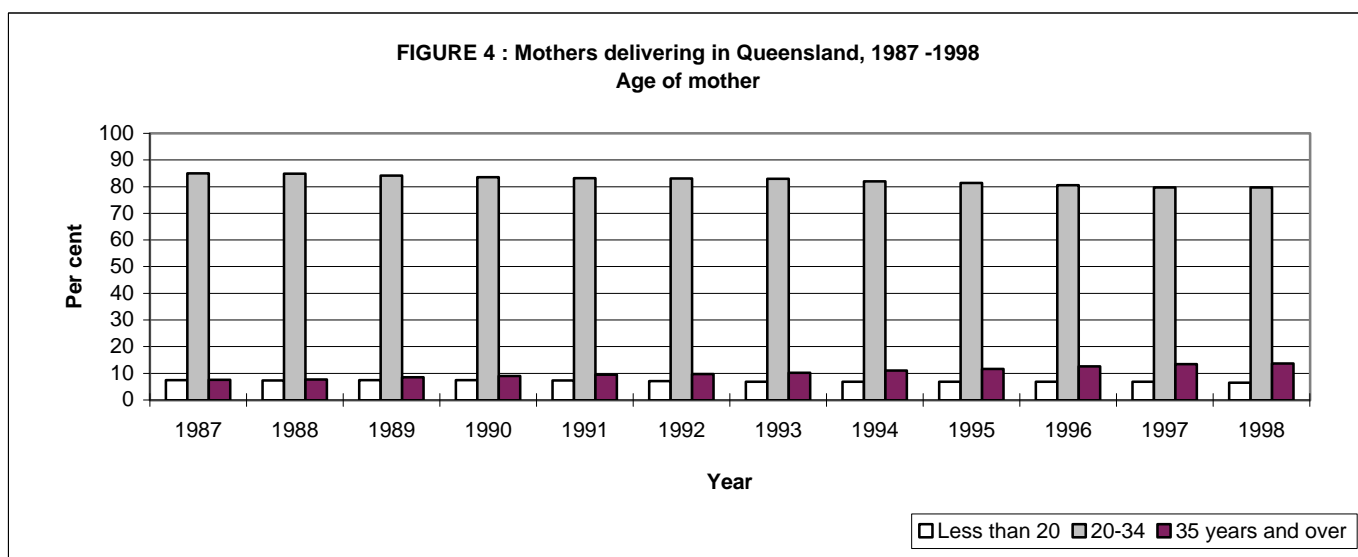
Source: "Australia's Mothers and Babies 1997", AIHW, 1999, p. 54
*Data for Tasmania incomplete.

**MOTHERS DELIVERING IN QUEENSLAND, 1998
SELECTED VARIABLES BY AGE OF MOTHER**

Selected Variables	Age of mother (years)									
	Less than 18		Total under 20		20-34		35 and over		Total	
	No.	No.	No.	%	No.	%	No.	%	No.	%
Place of delivery										
Public facility	960	2,026	2,986	96.8	27,540	72.8	3,868	59.4	34,394	72.5
Private facility	35	47	82	2.7	9,777	25.8	2,520	38.7	12,379	26.1
Birth centre	1	3	4	0.1	231	0.6	46	0.7	281	0.6
Homebirth	-	2	2	0.1	121	0.3	48	0.7	171	0.4
Born before arrival	2	9	11	0.4	180	0.5	34	0.5	225	0.5
Total	998	2,087	3,085	100.0	37,849	100.0	6,516	100.0	47,450	100.0
Perineal status (vaginal deliveries only - including vacuum and forceps)										
Intact	439	916	1,355	50.0	12,916	43.8	1,789	40.3	16,060	43.8
Lacerated - sutured	232	443	675	24.9	9,384	31.8	1,555	35.0	11,614	31.7
Lacerated - not sutured	71	174	245	9.0	2,412	8.2	370	8.3	3,027	8.3
Episiotomy	158	275	433	16.0	4,795	16.2	726	16.4	5,954	16.2
Not stated	-	-	-	-	2	0.0	-	-	2	0.0
Total	900	1,808	2,708	100.0	29,509	100.0	4,440	100.0	36,657	100.0
Selected labour and delivery complications^(a)										
Obstructed/abnormal labour	242	547	789	25.6	12,872	34.0	2,207	33.9	15,868	33.4
Meconium liquor	210	376	586	19.0	5,476	14.5	814	12.5	6,876	14.5
Fetal distress	100	255	355	11.5	3,412	9.0	518	7.9	4,285	9.0
Primary post-partum haemorrhage	30	68	98	3.2	919	2.4	148	2.3	1,165	2.5
Retained placenta or membranes (without haemorrhage)	25	43	68	2.2	670	1.8	110	1.7	848	1.8
Total	998	2,087	3,085		37,849		6,516		47,450	
Length of postnatal stay for mothers delivering in hospital/birth centre and discharged home (days)										
0	24	48	72	2.4	902	2.4	127	2.0	1,101	2.4
1	127	275	402	13.5	4,333	11.7	517	8.2	5,252	11.4
2	218	516	734	24.7	6,561	17.8	778	12.3	8,073	17.5
3	253	514	767	25.8	7,233	19.6	966	15.2	8,966	19.4
4 - 7	306	623	929	31.2	16,369	44.3	3,406	53.8	20,704	44.8
8-14	26	32	58	1.9	1,461	4.0	510	8.1	2,029	4.4
15-21	5	8	13	0.4	68	0.2	25	0.4	106	0.2
22 and over	-	2	2	0.1	21	0.1	6	0.1	29	0.1
Total	959	2,018	2,977	100.0	36,948	100.0	6,335	100.0	46,260	100.0
Separation status of mother										
Planned homebirth ^(b)	-	2	2	0.1	121	0.3	48	0.7	171	0.4
Discharged	959	2,018	2,977	96.5	36,948	97.6	6,335	97.2	46,260	97.5
Transferred	39	67	106	3.4	776	2.1	133	2.0	1,015	2.1
Died	-	-	-	-	-	-	-	-	-	-
Not stated	-	-	-	-	4	0.0	-	-	4	0.0
Total	998	2,087	3,085	100.0	37,849	100.0	6,516	100.0	47,450	100.0

(a) Reporting of multiple conditions/ procedures permitted.

(b) Includes 11 mothers transferred to a facility from a homebirth.



**BIRTHS, QUEENSLAND, 1998
SELECTED VARIABLES BY AGE OF MOTHER**

Selected Variables	Age of mother (years)											
	Less than 18		18-19		Total under 20		20-34		35 and over		Total	
	No.	No.	No.	%	No.	%	No.	%	No.	%	No.	%
Selected methods of analgesia or anaesthesia used during labour and delivery^(a)												
None reported	131	276	407	13.1	6,783	17.7	1,359	20.4	8,549	17.8		
At least one method	874	1,825	2,699	86.9	31,612	82.3	5,297	79.6	39,608	82.2		
<i>Nitrous oxide</i>	588	1,199	1,787	57.5	18,103	47.1	2,344	35.2	22,234	46.2		
<i>Narcotic (IM/IV)</i>	480	996	1,476	47.5	11,030	28.7	1,245	18.7	13,751	28.6		
<i>Epidural</i>	237	519	756	24.3	10,540	27.4	1,965	29.5	13,261	27.5		
<i>Spinal</i>	55	140	195	6.3	4,419	11.5	1,086	16.3	5,700	11.8		
<i>General anaesthesia</i>	36	61	97	3.1	1,185	3.1	281	4.2	1,563	3.2		
<i>Other</i>	30	22	52	1.7	560	1.5	100	1.5	712	1.5		
Not stated	-	-	-	-	5	0.0	1	0.0	6	0.0		
Total	1,005	2,101	3,106		38,400		6,657		48,163			
Method of delivery												
Spontaneous vertex	817	1,650	2,467	79.4	25,900	67.4	3,913	58.8	32,280	67.0		
Forceps/vacuum	81	148	229	7.4	3,520	9.2	529	7.9	4,278	8.9		
Caesarean section	101	286	387	12.5	8,639	22.5	2,162	32.5	11,188	23.2		
Breech	6	15	21	0.7	300	0.8	47	0.7	368	0.8		
Other	-	2	2	0.1	39	0.1	6	0.1	47	0.1		
Not stated	-	-	-	-	2	0.0	-	-	2	0.0		
Total	1,005	2,101	3,106	100.0	38,400	100.0	6,657	100.0	48,163	100.0		
Accoucheur												
Obstetrician	111	226	337	10.8	12,840	33.4	3,245	48.7	16,422	34.1		
Other medical officer	156	372	528	17.0	6,304	16.4	950	14.3	7,782	16.2		
Midwife	593	1,191	1,784	57.4	15,701	40.9	2,020	30.3	19,505	40.5		
Student midwife	123	234	357	11.5	2,600	6.8	294	4.4	3,251	6.7		
Medical student	19	68	87	2.8	756	2.0	106	1.6	949	2.0		
Other	2	10	12	0.4	190	0.5	39	0.6	241	0.5		
Not stated	1	-	1	0.0	9	0.0	3	0.0	13	0.0		
Total	1,005	2,101	3,106	100.0	38,400	100.0	6,657	100.0	48,163	100.0		
Birthweight (grams)												
Less than 1,500	23	39	62	2.0	544	1.4	126	1.9	732	1.5		
<i>Less than 1,000</i>	13	21	34	1.1	323	0.8	81	1.2	438	0.9		
1,500-2,499	65	143	208	6.7	1,957	5.1	395	5.9	2,560	5.3		
2,500-3,999	835	1,713	2,548	82.0	31,033	80.8	5,258	79.0	38,839	80.6		
4,000 and over	81	206	287	9.2	4,861	12.7	878	13.2	6,026	12.5		
Not stated	1	-	1	0.0	5	0.0	-	-	6	0.0		
Total	1,005	2,101	3,106	100.0	38,400	100.0	6,657	100.0	48,163	100.0		
Gestation (weeks)												
Less than 28	15	24	39	1.3	300	0.8	71	1.1	410	0.9		
28-36	92	155	247	8.0	2,588	6.7	553	8.3	3,388	7.0		
37-41	877	1,870	2,747	88.4	34,703	90.4	5,908	88.7	43,358	90.0		
42 and over	21	52	73	2.4	805	2.1	125	1.9	1,003	2.1		
Not stated	-	-	-	-	4	0.0	-	-	4	0.0		
Total	1,005	2,101	3,106	100.0	38,400	100.0	6,657	100.0	48,163	100.0		

(a) Reporting of multiple methods of analgesia/anaesthesia permitted.

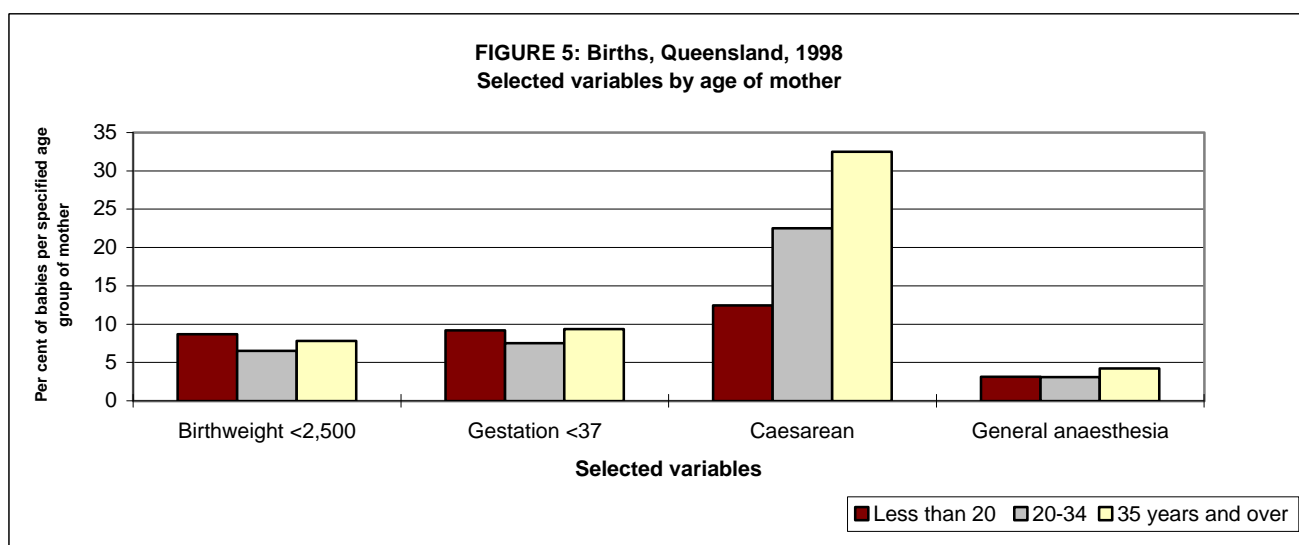


FIGURE 6: Births, Queensland, 1998
Age of mother by size of birth facility

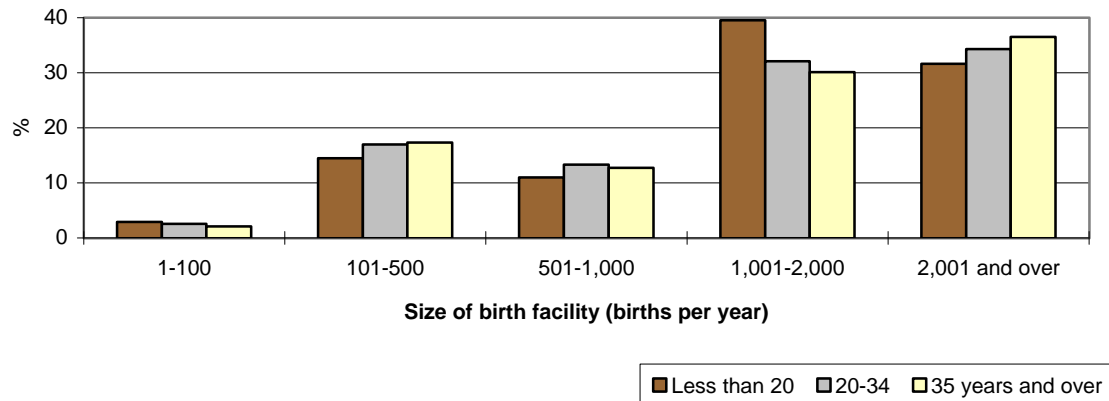
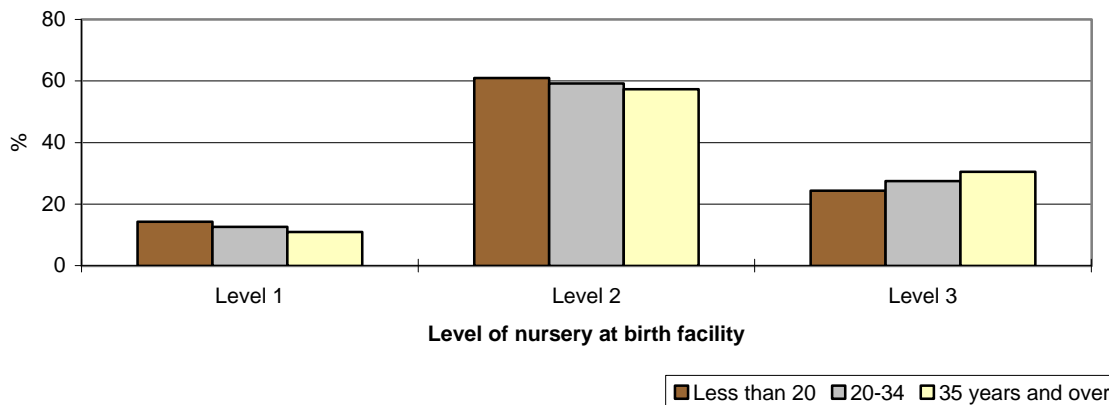


FIGURE 7: Births, Queensland, 1998
Age of mother by level of nursery at birth facility



BIRTHS, QUEENSLAND, 1998
SELECTED VARIABLES BY AGE OF MOTHER

Selected Variables	Age of mother (years)									
	Less than 18		Total under 20		20-34		35 and over		Total	
	No.	No.	No.	%	No.	%	No.	%	No.	%
Size of birth facility (births per year)										
1-100	31	59	90	2.9	991	2.6	138	2.1	1,219	2.5
101-500	133	317	450	14.5	6,510	17.0	1,155	17.4	8,115	16.8
501-1,000	110	232	342	11.0	5,112	13.3	847	12.7	6,301	13.1
1,001-2,000 ^(a)	433	795	1,228	39.5	12,321	32.1	2,004	30.1	15,553	32.3
2,001 and over	296	687	983	31.6	13,164	34.3	2,431	36.5	16,578	34.4
Planned homebirth	-	2	2	0.1	121	0.3	48	0.7	171	0.4
Born before arrival	2	9	11	0.4	181	0.5	34	0.5	226	0.5
Total	1,005	2,101	3,106	100.0	38,400	100.0	6,657	100.0	48,163	100.0
Level of nursery at birth facility										
Level 1	138	305	443	14.3	4,821	12.6	729	11.0	5,993	12.4
Level 2	646	1,247	1,893	60.9	22,736	59.2	3,817	57.3	28,446	59.1
Level 3	219	538	757	24.4	10,537	27.4	2,029	30.5	13,323	27.7
Other	-	-	-	-	4	0.0	-	-	4	0.0
Planned homebirth	-	2	2	0.1	121	0.3	48	0.7	171	0.4
Born before arrival	2	9	11	0.4	181	0.5	34	0.5	226	0.5
Total	1,005	2,101	3,106	100.0	38,400	100.0	6,657	100.0	48,163	100.0

(a) Includes 1 hospital with a level 3 nursery.