

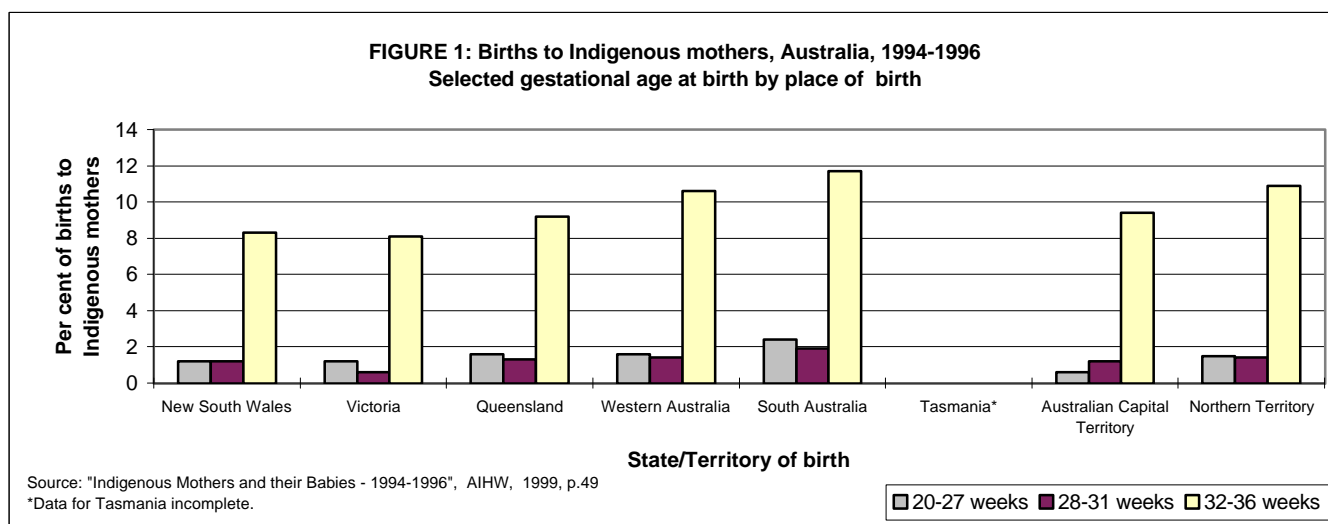
BIRTHS, QUEENSLAND, 1998
SELECTED VARIABLES BY GESTATIONAL AGE OF BABY AT BIRTH

Selected variables	Completed gestational weeks									
	Less than 28		28-36		37-41		42 and over		Total ^(a)	
	No.	%	No.	%	No.	%	No.	%	No.	%
Age of mother (years)										
Less than 20	39	9.5	247	7.3	2,747	6.3	73	7.3	3,106	6.4
20-34	300	73.2	2,588	76.4	34,703	80.0	805	80.3	38,400	79.7
35 and over	71	17.3	553	16.3	5,908	13.6	125	12.5	6,657	13.8
Total	410	100.0	3,388	100.0	43,358	100.0	1,003	100.0	48,163	100.0
Indigenous status of mother										
Indigenous	50	12.2	282	8.3	2,362	5.4	62	6.2	2,757	5.7
Non-indigenous	360	87.8	3,105	91.6	40,991	94.5	941	93.8	45,400	94.3
Not stated	-	-	1	0.0	5	0.0	-	-	6	0.0
Total	410	100.0	3,388	100.0	43,358	100.0	1,003	100.0	48,163	100.0
Marital status of mother										
Single	92	22.4	516	15.2	5,082	11.7	154	15.4	5,845	12.1
Married/defacto	308	75.1	2,824	83.4	37,728	87.0	844	84.1	41,707	86.6
Other	10	2.4	47	1.4	547	1.3	5	0.5	609	1.3
Not stated	-	-	1	0.0	1	0.0	-	-	2	0.0
Total	410	100.0	3,388	100.0	43,358	100.0	1,003	100.0	48,163	100.0
Country of birth of mother										
Australia	337	82.2	2,881	85.0	36,175	83.4	870	86.7	40,266	83.6
Other English speaking	39	9.5	274	8.1	3,750	8.6	84	8.4	4,148	8.6
Non-English speaking	32	7.8	231	6.8	3,424	7.9	49	4.9	3,736	7.8
Other ^(b)	2	0.5	2	0.1	9	0.0	-	-	13	0.0
Total	410	100.0	3,388	100.0	43,358	100.0	1,003	100.0	48,163	100.0
Area of usual residence of mother ^(c)										
Urban	243	59.3	2,199	64.9	28,491	65.7	592	59.0	31,526	65.5
Rural	114	27.8	1,020	30.1	13,158	30.3	367	36.6	14,662	30.4
Remote	21	5.1	109	3.2	1,426	3.3	39	3.9	1,595	3.3
Other	32	7.8	60	1.8	283	0.7	5	0.5	380	0.8
Total	410	100.0	3,388	100.0	43,358	100.0	1,003	100.0	48,163	100.0
Number of previous deliveries										
None	173	42.2	1,486	43.9	16,615	38.3	519	51.7	18,795	39.0
One to four	220	53.7	1,792	52.9	25,962	59.9	454	45.3	28,429	59.0
Five or more	17	4.1	108	3.2	781	1.8	30	3.0	937	1.9
Not stated	-	-	2	0.1	-	-	-	-	2	0.0
Total	410	100.0	3,388	100.0	43,358	100.0	1,003	100.0	48,163	100.0
Plurality of pregnancy										
Singleton	335	81.7	2,738	80.8	42,683	98.4	1,003	100.0	46,763	97.1
Twin	66	16.1	583	17.2	675	1.6	-	-	1,324	2.7
Other multiple	9	2.2	67	2.0	-	-	-	-	76	0.2
Total	410	100.0	3,388	100.0	43,358	100.0	1,003	100.0	48,163	100.0

(a) Includes babies with a not stated gestational age.

(b) Includes not stated country of birth and "Other" countries as per Table 4.05.

(c) "Other" includes interstate/overseas. "Rural" includes "Remote Major", ie. Mt Isa.



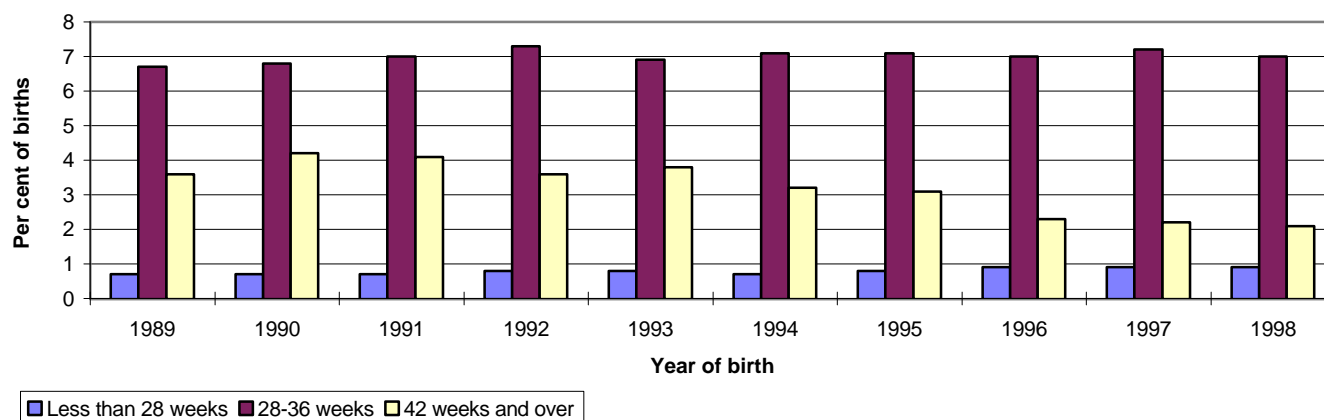
BIRTHS, QUEENSLAND, 1998
SELECTED VARIABLES BY GESTATIONAL AGE OF BABY AT BIRTH

Selected variables	Completed gestational weeks									
	Less than 28		28-36		37-41		42 and over		Total ^(a)	
	No.	%	No.	%	No.	%	No.	%	No.	%
Number of antenatal visits										
Less than 2	75	18.3	134	4.0	543	1.3	14	1.4	768	1.6
2 or more	334	81.5	3,252	96.0	42,797	98.7	989	98.6	47,374	98.4
Not stated	1	0.2	2	0.1	18	0.0	-	-	21	0.0
Total	410	100.0	3,388	100.0	43,358	100.0	1,003	100.0	48,163	100.0
Type of antenatal care										
Public hospital/clinic	176	42.9	1,134	33.5	11,614	26.8	317	31.6	13,242	27.5
Shared care	98	23.9	1,142	33.7	17,205	39.7	484	48.3	18,929	39.3
Private medical practitioner	89	21.7	1,060	31.3	14,189	32.7	185	18.4	15,525	32.2
Private midwifery practitioner	3	0.7	5	0.1	211	0.5	8	0.8	227	0.5
Private medical & midwife practitioners	1	0.2	1	0.0	10	0.0	2	0.2	14	0.0
No antenatal care	41	10.0	43	1.3	116	0.3	7	0.7	208	0.4
Not stated	2	0.5	3	0.1	13	0.0	-	-	18	0.0
Total	410	100.0	3,388	100.0	43,358	100.0	1,003	100.0	48,163	100.0
Assisted conception status										
Not assisted	377	92.0	3,127	92.3	42,361	97.7	990	98.7	46,858	97.3
Assisted conception	30	7.3	260	7.7	984	2.3	13	1.3	1,287	2.7
Not stated	3	0.7	1	0.0	13	0.0	-	-	18	0.0
Total	410	100.0	3,388	100.0	43,358	100.0	1,003	100.0	48,163	100.0
Type of facility from where mother was transferred before giving birth										
Homebirth	1	0.2	-	-	17	0.0	3	0.3	21	0.0
Birth centre	-	-	10	0.3	102	0.2	10	1.0	122	0.3
Public facility	98	23.9	403	11.9	473	1.1	10	1.0	984	2.0
Private facility	9	2.2	50	1.5	4	0.0	-	-	63	0.1
Not stated facility	-	-	-	-	3	0.0	-	-	3	0.0
Not transferred ^(b)	302	73.7	2,925	86.3	42,759	98.6	980	97.7	46,970	97.5
Total	410	100.0	3,388	100.0	43,358	100.0	1,003	100.0	48,163	100.0
Accommodation type										
Not applicable - Planned homebirth	-	-	3	0.1	160	0.4	7	0.7	171	0.4
Public	296	72.2	2,355	69.5	29,192	67.3	825	82.3	32,670	67.8
Private shared/single	112	27.3	1,029	30.4	14,005	32.3	171	17.0	15,318	31.8
Not stated	2	0.5	1	0.0	1	0.0	-	-	4	0.0
Total	410	100.0	3,388	100.0	43,358	100.0	1,003	100.0	48,163	100.0

(a) Includes babies with a not stated gestational age.

(b) Includes not stated antenatal transfer.

FIGURE 2: Births, Queensland, 1989-1998,
Proportion by selected gestational age at birth

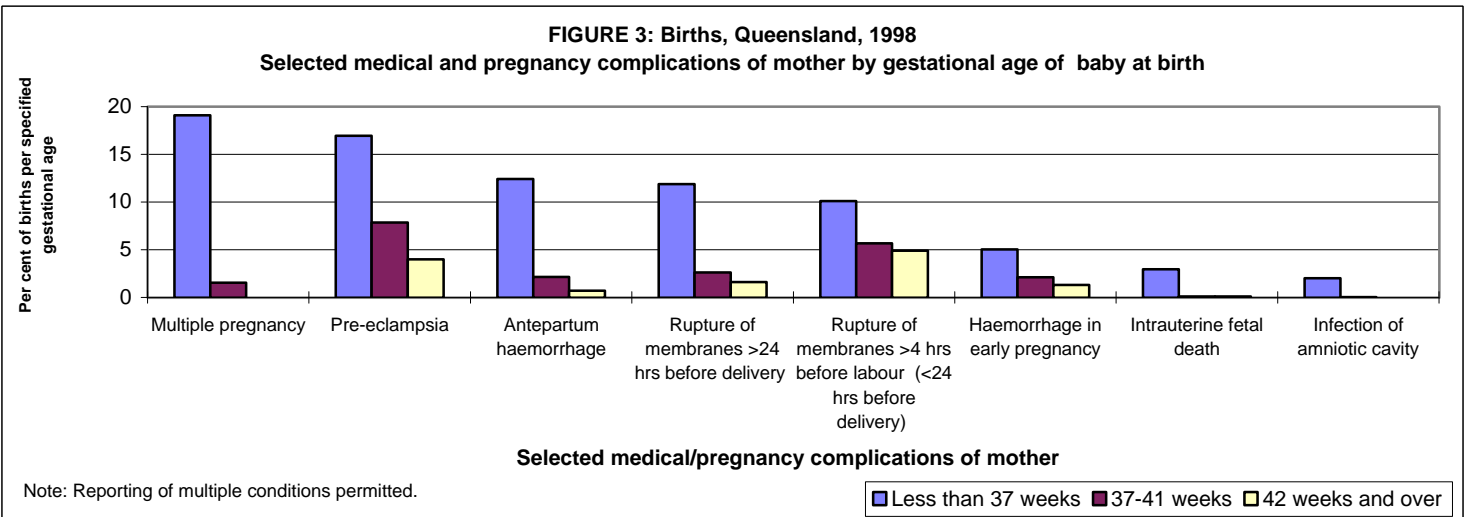


**BIRTHS, QUEENSLAND, 1998
SELECTED VARIABLES BY GESTATIONAL AGE OF BABY AT BIRTH**

Selected variables	Completed gestational weeks									
	Less than 28		28-36		37-41		42 and over		Total ^(a)	
	No.	%	No.	%	No.	%	No.	%	No.	%
Selected pregnancy / medical complications^(b)										
Pre-eclampsia	27	6.6	617	18.2	3,403	7.8	40	4.0	4,087	8.5
Rupture of membranes >4 hrs before labour (<24 hrs before delivery)	43	10.5	340	10.0	2,461	5.7	49	4.9	2,893	6.0
Asthma	19	4.6	163	4.8	1,550	3.6	20	2.0	1,752	3.6
Rupture of membranes >24 hrs before delivery	64	15.6	387	11.4	1,142	2.6	16	1.6	1,609	3.3
Gestational diabetes	2	0.5	130	3.8	1,310	3.0	11	1.1	1,453	3.0
Infectious and parasitic diseases	21	5.1	122	3.6	1,232	2.8	37	3.7	1,412	2.9
<i>Streptococcal infection</i>	9	2.2	51	1.5	517	1.2	20	2.0	597	1.2
<i>Active genital herpes</i>	1	0.2	22	0.6	251	0.6	4	0.4	278	0.6
<i>Viral hepatitis</i>	2	0.5	20	0.6	157	0.4	7	0.7	186	0.4
<i>Syphilis</i>	1	0.2	9	0.3	51	0.1	2	0.2	63	0.1
Antepartum haemorrhage, abruptio placentae and placenta praevia	101	24.6	370	10.9	937	2.2	7	0.7	1,416	2.9
Haemorrhage in early pregnancy	53	12.9	138	4.1	914	2.1	13	1.3	1,118	2.3
Disorder of thyroid gland	-	-	15	0.4	319	0.7	2	0.2	336	0.7
Epilepsy	5	1.2	24	0.7	254	0.6	4	0.4	287	0.6
Substance abuse	7	1.7	40	1.2	166	0.4	3	0.3	216	0.4
Diabetes mellitus	2	0.5	78	2.3	107	0.2	1	0.1	188	0.4
Intrauterine fetal death	50	12.2	62	1.8	41	0.1	1	0.1	154	0.3
Suspected fetal anomaly	40	9.8	29	0.9	71	0.2	1	0.1	141	0.3
Infection of amniotic cavity	51	12.4	26	0.8	12	0.0	-	-	89	0.2
Cervical incompetence	14	3.4	12	0.4	28	0.1	-	-	54	0.1
Total	410		3,388		43,358		1,003		48,163	
Length of antenatal stay (days)										
0-1	251	61.2	2,540	75.0	40,588	93.6	887	88.4	44,269	91.9
2-7	106	25.9	610	18.0	2,052	4.7	102	10.2	2,870	6.0
8-14	24	5.9	115	3.4	206	0.5	4	0.4	349	0.7
15-21	13	3.2	44	1.3	88	0.2	-	-	145	0.3
22 and over	7	1.7	53	1.6	72	0.2	-	-	132	0.3
Not applicable- Planned homebirth	-	-	3	0.1	160	0.4	7	0.7	171	0.4
Not applicable- Born before arrival	8	2.0	23	0.7	192	0.4	3	0.3	226	0.5
Not stated	1	0.2	-	-	-	-	-	-	1	0.0
Total	410	100.0	3,388	100.0	43,358	100.0	1,003	100.0	48,163	100.0
Selected procedures and operations during pregnancy, labour & delivery, or the puerperium^(b)										
Obstetric ultrasound	398	97.1	3,326	98.2	42,671	98.4	985	98.2	47,381	98.4
Amniocentesis	34	8.3	196	5.8	1,684	3.9	30	3.0	1,944	4.0
Removal of retained placenta	45	11.0	77	2.3	637	1.5	29	2.9	788	1.6
Chorionic villus sampling	11	2.7	32	0.9	287	0.7	8	0.8	338	0.7
Encirclement suture of cervix	20	4.9	31	0.9	70	0.2	-	-	121	0.3
Total	410		3,388		43,358		1,003		48,163	
Onset of labour										
Spontaneous - not augmented	188	45.9	1,403	41.4	15,551	35.9	188	18.7	17,331	36.0
Spontaneous - augmented	50	12.2	597	17.6	11,958	27.6	187	18.6	12,793	26.6
Induced	129	31.5	493	14.6	10,426	24.0	597	59.5	11,645	24.2
No labour	43	10.5	895	26.4	5,422	12.5	31	3.1	6,391	13.3
Not stated	-	-	-	-	1	0.0	-	-	3	0.0
Total	410	100.0	3,388	100.0	43,358	100.0	1,003	100.0	48,163	100.0

(a) Includes babies with a not stated gestational age.

(b) Reporting of multiple conditions/procedures permitted.



BIRTHS, QUEENSLAND, 1998
SELECTED VARIABLES BY GESTATIONAL AGE OF BABY AT BIRTH

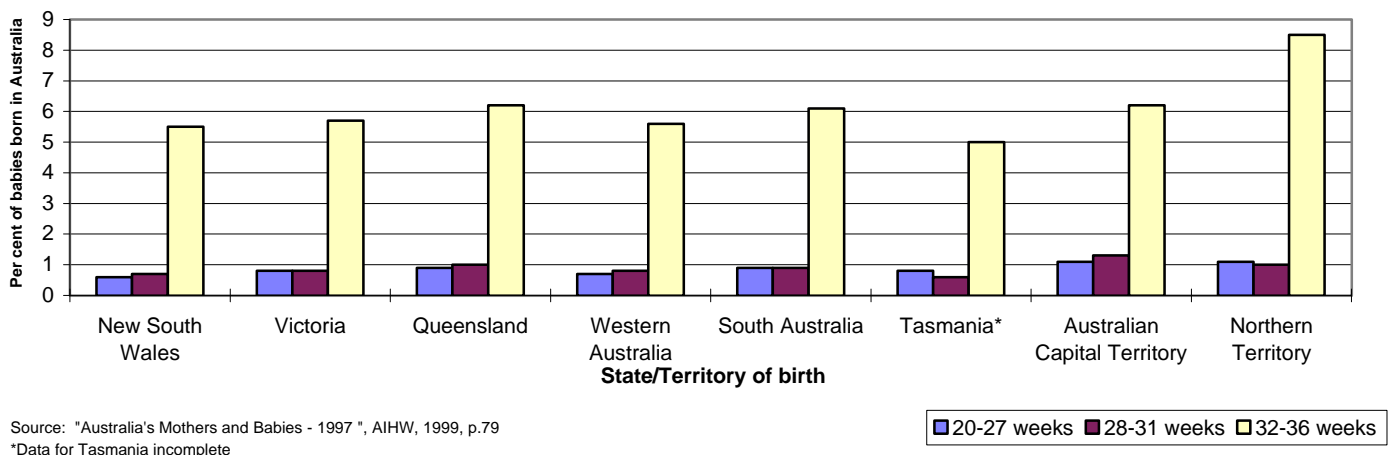
Selected variables	Completed gestational weeks									
	Less than 28		28-36		37-41		42 and over		Total ^(a)	
	No.	%	No.	%	No.	%	No.	%	No.	%
Place of delivery										
Public facility	318	77.6	2,564	75.7	31,135	71.8	847	84.4	34,867	72.4
Private facility	84	20.5	798	23.6	11,591	26.7	144	14.4	12,617	26.2
Birth centre	-	-	-	-	280	0.6	2	0.2	282	0.6
Homebirth	-	-	3	0.1	160	0.4	7	0.7	171	0.4
Born before arrival	8	2.0	23	0.7	192	0.4	3	0.3	226	0.5
Total	410	100.0	3,388	100.0	43,358	100.0	1,003	100.0	48,163	100.0
Perineal status (vaginal deliveries only - including vacuum and forceps)										
Intact	293	96.1	1,140	59.5	14,454	42.6	310	39.1	16,197	43.8
Lacerated - sutured	4	1.3	414	21.6	11,051	32.6	235	29.6	11,704	31.7
Lacerated - not sutured	1	0.3	126	6.6	2,826	8.3	81	10.2	3,034	8.2
Episiotomy	7	2.3	236	12.3	5,610	16.5	167	21.1	6,021	16.3
Not stated	-	-	-	-	1	0.0	-	-	2	0.0
Total	305	100.0	1,916	100.0	33,942	100.0	793	100.0	36,958	100.0
Selected labour and delivery complications^(b)										
Obstructed/abnormal labour	91	22.2	820	24.2	14,645	33.8	430	42.9	15,988	33.2
Meconium liquor	17	4.1	161	4.8	6,413	14.8	293	29.2	6,885	14.3
Fetal distress	21	5.1	376	11.1	3,744	8.6	166	16.6	4,307	8.9
Primary post-partum haemorrhage	13	3.2	67	2.0	1,076	2.5	28	2.8	1,184	2.5
Retained placenta or membranes (without haemorrhage)	45	11.0	82	2.4	702	1.6	28	2.8	857	1.8
Total	410		3,388		43,358		1,003		48,163	
Length of postnatal stay for mothers delivering in hospital/birth centre and discharged home (days)										
0	83	21.7	55	1.7	939	2.2	27	2.8	1,105	2.4
1	97	25.3	160	5.0	4,907	11.6	100	10.3	5,264	11.2
2	52	13.6	287	9.0	7,585	17.9	176	18.2	8,100	17.3
3	43	11.2	356	11.2	8,410	19.8	218	22.5	9,027	19.2
4 - 7	82	21.4	1,531	48.1	19,008	44.8	426	44.1	21,048	44.8
8-14	22	5.7	677	21.3	1,516	3.6	19	2.0	2,234	4.8
15-21	3	0.8	85	2.7	39	0.1	1	0.1	128	0.3
22 and over	1	0.3	29	0.9	7	0.0	-	-	37	0.1
Total	383	100.0	3,180	100.0	42,411	100.0	967	100.0	46,943	100.0
Separation status of mother										
Planned homebirth ^(c)	-	-	3	0.1	160	0.4	7	0.7	171	0.4
Discharged	383	93.4	3,180	93.9	42,411	97.8	967	96.4	46,943	97.5
Transferred	27	6.6	204	6.0	784	1.8	29	2.9	1,045	2.2
Died	-	-	-	-	-	-	-	-	-	-
Not stated	-	-	1	0.0	3	0.0	-	-	4	0.0
Total	410	100.0	3,388	100.0	43,358	100.0	1,003	100.0	48,163	100.0

(a) Includes babies with a not stated gestational age.

(b) Reporting of multiple conditions permitted.

(c) Includes 11 mothers transferred to a facility from a homebirth.

FIGURE 4: Births, Australia, 1998
Proportion by selected gestational age at birth by place of birth



BIRTHS, QUEENSLAND, 1998
SELECTED VARIABLES BY GESTATIONAL AGE OF BABY AT BIRTH

Selected variables	Completed gestational weeks									
	Less than 28		28-36		37-41		42 and over		Total ^(a)	
	No.	%	No.	%	No.	%	No.	%	No.	%
Selected methods of analgesia or anaesthesia used during labour and delivery^(b)										
None reported	78	19.0	474	14.0	7,824	18.0	172	17.1	8,549	17.8
At least one method	332	81.0	2,913	86.0	35,531	81.9	831	82.9	39,608	82.2
Nitrous oxide	92	22.4	1,010	29.8	20,591	47.5	540	53.8	22,234	46.2
Narcotic (IM/IV)	186	45.4	686	20.2	12,529	28.9	349	34.8	13,751	28.6
Epidural	53	12.9	1,037	30.6	11,857	27.3	314	31.3	13,261	27.5
Spinal	37	9.0	734	21.7	4,851	11.2	77	7.7	5,700	11.8
General anaesthesia	94	22.9	345	10.2	1,098	2.5	26	2.6	1,563	3.2
Other	34	8.3	39	1.2	613	1.4	26	2.6	712	1.5
Not stated	-	-	1	0.0	3	0.0	-	-	6	0.0
Total	410		3,388		43,358		1,003		48,163	
Method of delivery										
Spontaneous vertex	173	42.2	1,663	49.1	29,783	68.7	659	65.7	32,280	67.0
Forceps/vacuum	34	8.3	165	4.9	3,948	9.1	131	13.1	4,278	8.9
Caesarean section	97	23.7	1,469	43.4	9,411	21.7	210	20.9	11,188	23.2
Breech	96	23.4	86	2.5	183	0.4	3	0.3	368	0.8
Other	10	2.4	5	0.1	32	0.1	-	-	47	0.1
Not stated	-	-	-	-	1	0.0	-	-	2	0.0
Total	410	100.0	3,388	100.0	43,358	100.0	1,003	100.0	48,163	100.0
Accoucheur										
Obstetrician	119	29.0	1,460	43.1	14,627	33.7	216	21.5	16,422	34.1
Other medical officer	116	28.3	746	22.0	6,663	15.4	255	25.4	7,782	16.2
Midwife	165	40.2	1,014	29.9	17,874	41.2	451	45.0	19,505	40.5
Student midwife	1	0.2	117	3.5	3,074	7.1	59	5.9	3,251	6.7
Medical student	-	-	25	0.7	906	2.1	18	1.8	949	2.0
Other	8	2.0	24	0.7	205	0.5	4	0.4	241	0.5
Not stated	1	0.2	2	0.1	9	0.0	-	-	13	0.0
Total	410	100.0	3,388	100.0	43,358	100.0	1,003	100.0	48,163	100.0
Birthweight (grams)										
Less than 1,500	408	99.5	317	9.4	6	0.0	-	-	732	1.5
Less than 1,000	369	90.0	67	2.0	1	0.0	-	-	438	0.9
1,500-2,499	1	0.2	1,678	49.5	878	2.0	3	0.3	2,560	5.3
2,500-3,999	-	-	1,381	40.8	36,764	84.8	692	69.0	38,839	80.6
4,000 and over	-	-	11	0.3	5,706	13.2	308	30.7	6,026	12.5
Not stated	1	0.2	1	0.0	4	0.0	-	-	6	0.0
Total	410	100.0	3,388	100.0	43,358	100.0	1,003	100.0	48,163	100.0

(a) Includes babies with a not stated gestational age.

(b) Reporting of multiple methods of analgesia/anaesthesia permitted.

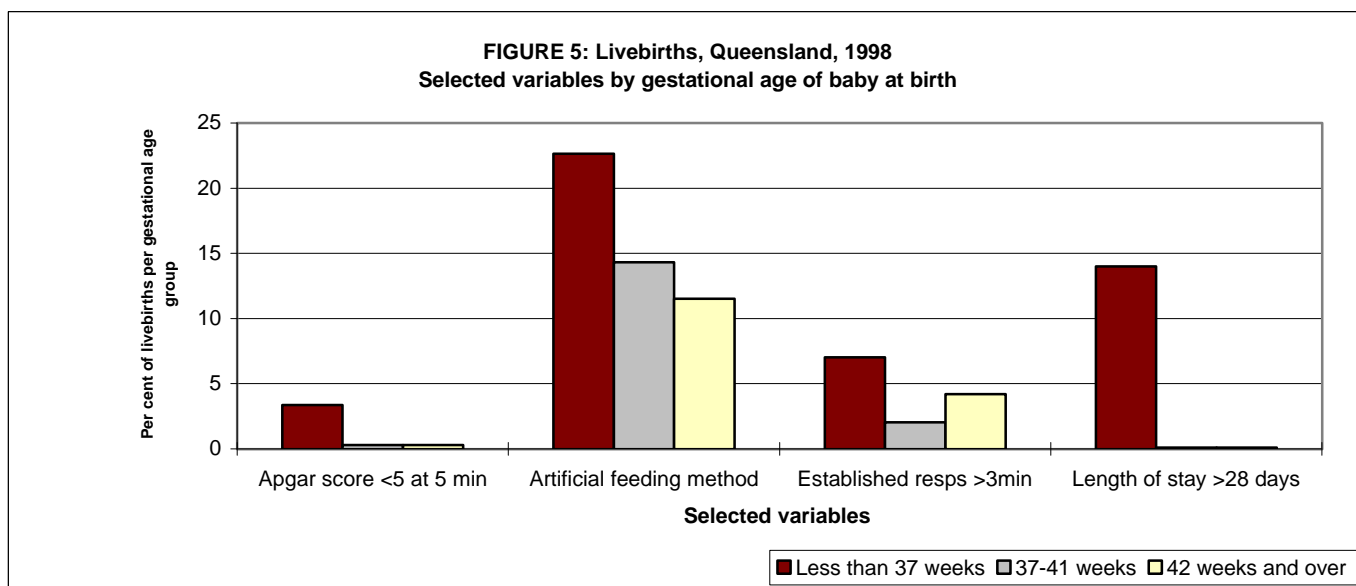


FIGURE 6: Births, Queensland, 1998
Gestational age at birth by size of birth facility

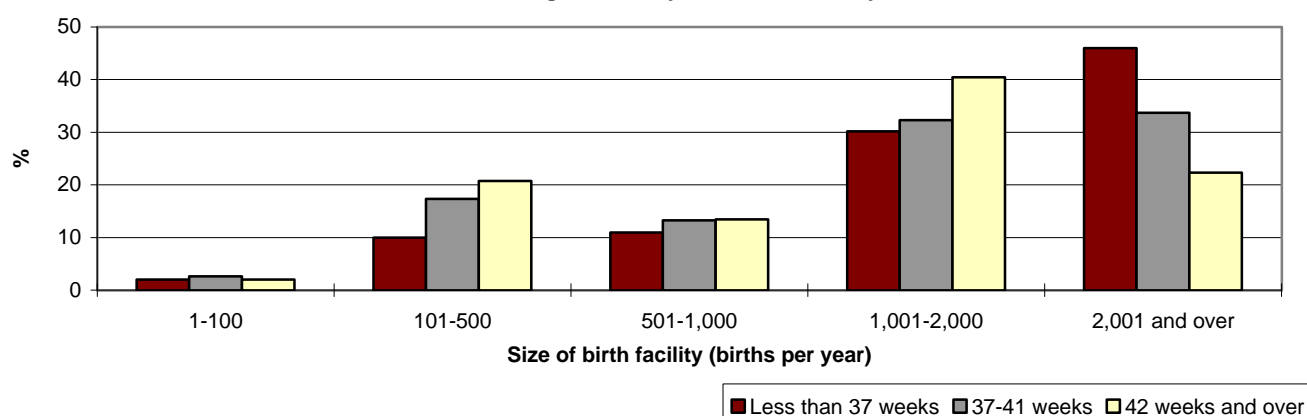
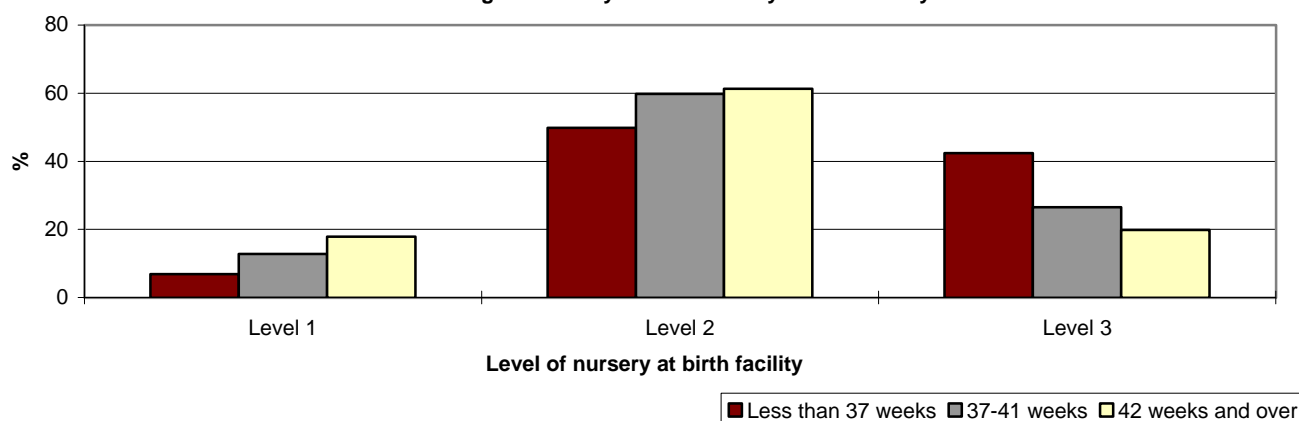


FIGURE 7: Births, Queensland, 1998
Gestational age at birth by level of nursery at birth facility



BIRTHS, QUEENSLAND, 1998
SELECTED VARIABLES BY GESTATIONAL AGE OF BABY AT BIRTH

Selected variables	Completed gestational weeks								Total ^(a)	
	Less than 28		28-36		37-41		42 and over		No.	%
	No.	%	No.	%	No.	%	No.	%	No.	%
Size of birth facility (births per year)										
1-100	37	9.0	39	1.2	1,122	2.6	20	2.0	1,219	2.5
101-500	33	8.0	346	10.2	7,527	17.4	208	20.7	8,115	16.8
501-1,000	24	5.9	392	11.6	5,750	13.3	135	13.5	6,301	13.1
1,001-2,000 ^(b)	98	23.9	1,048	30.9	14,001	32.3	406	40.5	15,553	32.3
2,001 and over	210	51.2	1,537	45.4	14,606	33.7	224	22.3	16,578	34.4
Planned homebirth	-	-	3	0.1	160	0.4	7	0.7	171	0.4
Born before arrival	8	2.0	23	0.7	192	0.4	3	0.3	226	0.5
Total	410	100.0	3,388	100.0	43,358	100.0	1,003	100.0	48,163	100.0
Level of nursery at birth facility										
Level 1	52	12.7	207	6.1	5,553	12.8	179	17.8	5,993	12.4
Level 2	125	30.5	1,769	52.2	25,936	59.8	615	61.3	28,446	59.1
Level 3	224	54.6	1,386	40.9	11,514	26.6	199	19.8	13,323	27.7
Other	1	0.2	-	-	3	0.0	-	-	4	0.0
Planned homebirth	-	-	3	0.1	160	0.4	7	0.7	171	0.4
Born before arrival	8	2.0	23	0.7	192	0.4	3	0.3	226	0.5
Total	410	100.0	3,388	100.0	43,358	100.0	1,003	100.0	48,163	100.0

(a) Includes babies with a not stated gestational age.

(b) Includes 1 hospital with a level 3 nursery.

LIVEBIRTHS, QUEENSLAND, 1998
SELECTED VARIABLES BY GESTATIONAL AGE OF BABY AT BIRTH

Selected variables	Completed gestational weeks									
	Less than 28		28-36		37-41		42 and over		Total ^(a)	
	No.	%	No.	%	No.	%	No.	%	No.	%
Apgar score at 1 minute										
0-4	142	62.0	296	9.0	1,407	3.3	64	6.4	1,909	4.0
5-7	65	28.4	864	26.2	6,411	14.8	220	22.0	7,561	15.8
8-10	20	8.7	2,135	64.7	35,441	81.9	715	71.5	38,312	80.1
Not stated	2	0.9	6	0.2	29	0.1	1	0.1	40	0.1
Total	229	100.0	3,301	100.0	43,288	100.0	1,000	100.0	47,822	100.0
Apgar score at 5 minutes										
0-4	76	33.2	43	1.3	127	0.3	3	0.3	249	0.5
5-7	57	24.9	230	7.0	823	1.9	38	3.8	1,148	2.4
8-10	94	41.0	3,023	91.6	42,313	97.7	958	95.8	46,390	97.0
Not stated	2	0.9	5	0.2	25	0.1	1	0.1	35	0.1
Total	229	100.0	3,301	100.0	43,288	100.0	1,000	100.0	47,822	100.0
Establishment of respirations >3 minutes (excludes babies who were intubated at birth or failed to establish respirations)	49	21.4	199	6.0	879	2.0	42	4.2	1,169	2.4
Selected neonatal resuscitation methods ^(b)										
Nil resuscitation	42	18.3	573	17.4	14,330	33.1	280	28.0	15,226	31.8
At least one method	187	81.7	2,728	82.6	28,957	66.9	720	72.0	32,594	68.2
<i>Oral/pharyngeal suction</i>	112	48.9	2,304	69.8	24,346	56.2	557	55.7	27,321	57.1
<i>Facial oxygen</i>	38	16.6	1,506	45.6	10,787	24.9	297	29.7	12,630	26.4
<i>Bag and mask</i>	79	34.5	657	19.9	3,074	7.1	117	11.7	3,927	8.2
<i>Narcotic antagonist injection</i>	2	0.9	86	2.6	750	1.7	32	3.2	870	1.8
<i>IPPV via ETT ^(c)</i>	158	69.0	200	6.1	244	0.6	17	1.7	619	1.3
Not stated	-	-	-	-	1	0.0	-	-	2	0.0
Total	229		3,301		43,288		1,000		47,822	
Selected neonatal treatment ^(b)										
None	54	23.6	989	30.0	38,588	89.1	895	89.5	40,529	84.7
At least one method	175	76.4	2,312	70.0	4,698	10.9	105	10.5	7,291	15.2
<i>Oxygen >4 hrs</i>	162	70.7	1,252	37.9	1,308	3.0	31	3.1	2,754	5.8
<i>Phototherapy</i>	119	52.0	1,092	33.1	1,387	3.2	14	1.4	2,612	5.5
<i>Intramuscular/Intravenous antibiotics</i>	152	66.4	958	29.0	1,219	2.8	56	5.6	2,385	5.0
<i>Intravenous fluid</i>	168	73.4	1,289	39.0	1,006	2.3	30	3.0	2,493	5.2
<i>Mechanical ventilation</i>	163	71.2	444	13.5	157	0.4	1	0.1	765	1.6
Not stated	-	-	-	-	2	0.0	-	-	2	0.0
Total	229		3,301		43,288		1,000		47,822	
Administration of Vitamin K										
Oral	2	0.9	17	0.5	256	0.6	7	0.7	282	0.6
Intramuscular injection	178	77.7	3,259	98.7	42,678	98.6	976	97.6	47,092	98.5
None	49	21.4	25	0.8	346	0.8	17	1.7	438	0.9
Not stated	-	-	-	-	8	0.0	-	-	10	0.0
Total	229	100.0	3,301	100.0	43,288	100.0	1,000	100.0	47,822	100.0
Feeding method for livebirths discharged home from a facility/birth centre										
Breastmilk	30	56.6	1,957	73.3	35,430	83.9	838	86.9	38,256	83.3
Artificial milk	22	41.5	594	22.3	6,046	14.3	111	11.5	6,773	14.7
Both breastmilk and artificial milk	1	1.9	118	4.4	769	1.8	15	1.6	903	2.0
Total	53	100.0	2,669	100.0	42,245	100.0	964	100.0	45,932	100.0
Length of stay of livebirths discharged home from a facility/birth centre (days)										
0	-	-	8	0.3	900	2.1	27	2.8	935	2.0
1	-	-	57	2.1	4,846	11.5	98	10.2	5,001	10.9
2	-	-	147	5.5	7,494	17.7	176	18.3	7,817	17.0
3	-	-	184	6.9	8,311	19.7	218	22.6	8,713	19.0
4-7	-	-	804	30.1	18,881	44.7	419	43.5	20,105	43.8
8-14	-	-	608	22.8	1,652	3.9	23	2.4	2,283	5.0
15-27	-	-	532	19.9	116	0.3	2	0.2	650	1.4
28 and over	53	100.0	328	12.3	45	0.1	1	0.1	427	0.9
Not stated	-	-	1	0.0	-	-	-	-	1	0.0
Total	53	100.0	2,669	100.0	42,245	100.0	964	100.0	45,932	100.0

(a) Includes babies with a not stated gestational age.

(b) Reporting of multiple methods/treatments permitted.

(c) Intermittent positive pressure ventilation via endotracheal tube.

BIRTHS, QUEENSLAND, 1998
SELECTED VARIABLES BY GESTATIONAL AGE OF BABY AT BIRTH

Selected variables	Completed gestational weeks									
	Less than 28		28-36		37-41		42 and over		Total ^(a)	
	No.	%	No.	%	No.	%	No.	%	No.	%
Congenital anomaly status										
No anomaly	256	62.4	3,127	92.3	41,796	96.4	970	96.7	46,153	95.8
At least one anomaly	151	36.8	261	7.7	1,562	3.6	33	3.3	2,007	4.2
Not stated	3	0.7	-	-	-	-	-	-	3	0.0
Total	410	100.0	3,388	100.0	43,358	100.0	1,003	100.0	48,163	100.0
Separation status of baby										
Planned homebirth ^(b)	-	-	3	0.1	160	0.4	7	0.7	171	0.4
Discharged	53	12.9	2,669	78.8	42,245	97.4	964	96.1	45,932	95.4
Transferred	75	18.3	591	17.4	852	2.0	29	2.9	1,548	3.2
<i>To a facility with a Level 1 nursery</i>	1	0.2	129	3.8	532	1.2	23	2.3	685	1.4
<i>To a facility with a Level 2 nursery</i>	42	10.2	274	8.1	115	0.3	3	0.3	435	0.9
<i>To a facility with a Level 3 nursery</i>	23	5.6	136	4.0	159	0.4	3	0.3	321	0.7
<i>Other ^(c)</i>	9	2.2	52	1.5	45	0.1	-	-	106	0.2
<i>Not stated</i>	-	-	-	-	1	0.0	-	-	1	0.0
Died	282	68.8	125	3.7	99	0.2	3	0.3	510	1.1
Not stated	-	-	-	-	2	0.0	-	-	2	0.0
Total	410	100.0	3,388	100.0	43,358	100.0	1,003	100.0	48,163	100.0
Perinatal deaths										
	No.	Rate ^(d)	No.	Rate ^(d)	No.	Rate ^(d)	No.	Rate ^(d)	No.	Rate ^(d)
Stillbirths	181	441.5	87	25.7	70	1.6	3	3.0	341	7.1
Neonatal deaths	102	445.4	40	12.1	65	1.5	-	-	208	4.3
Perinatal deaths	283	690.2	127	37.5	135	3.1	3	3.0	549	11.4

(a) Includes babies with a not stated gestational age.

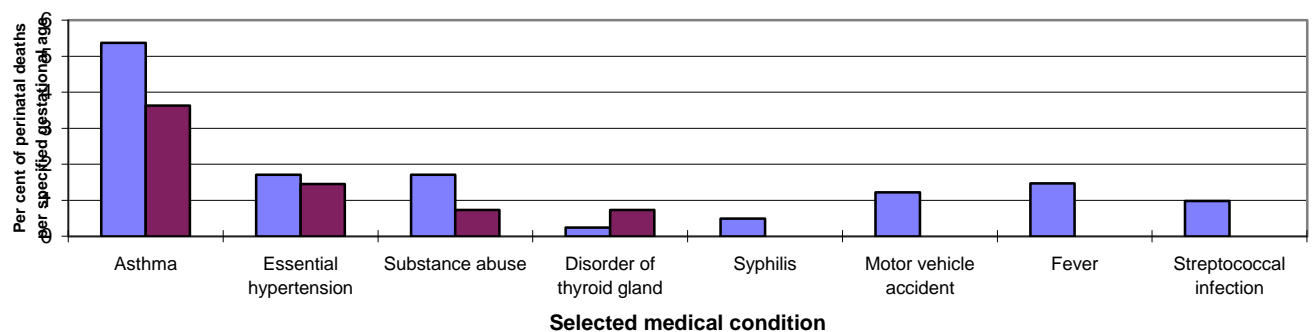
(b) Includes 12 babies transferred and 1 neonatal death.

(c) Other includes Interstate facilities.

(d) Neonatal death rate per 1,000 livebirths of specified gestational age.

Stillbirth and Perinatal death rate per 1,000 total births of specified gestational age.

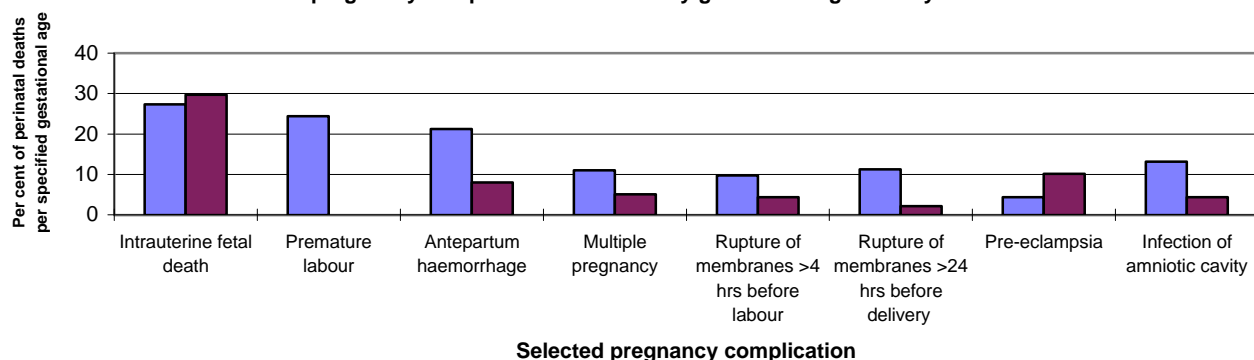
FIGURE 8: Perinatal deaths, Queensland, 1998
Selected medical condition of mother by gestational age of baby at birth



Note: Reporting of multiple conditions permitted.
 No causation can be inferred by these data.

■ Less than 37 weeks ■ 37 weeks and over

FIGURE 9: Perinatal deaths, Queensland, 1998
Selected pregnancy complication of mother by gestational age of baby at birth



Note: Reporting of multiple conditions permitted.
 No causation can be inferred by these data.

■ Less than 37 weeks ■ 37 weeks and over