

The Facts of Life

Newsletter of the Perinatal Data Collection

Issue No. 29

[Contents Page](#)

Perinatal Data Collection Team Update

The Perinatal Data Collection team welcomes readers to the 29th edition of the Facts of Life. The team has returned from a much deserved Easter break for what promises to be another busy yet rewarding year.

Please note that this will be the last time The Facts of Life will be circulated via the E-Bulletin. From now on the Perinatal Data Collection Team will circulate information relating to our collection via e-mails to our hospital contacts.

Team Movements

Perinatal Data Collection warmly welcomes Marnie McNulty to the team in the role of Data Collections Officer. Marnie comes to us from Department of Justice and is enjoying the challenge. Suzanne Milne has returned to the Outpatient Data Collection and we farewell Raymond Daniel who has taken his expertise into the Admitted Patient Data Collection. Denise Lewis and Lucinda Norris have ended their contracts with PDC and we wish them well in their future endeavours. Congratulations to Colleen Morris on her successful appointment as Senior Data Collection Officer.

Clean-Up

Clean-up queries are generated from a combination of unusual data items and errors that may have slipped through the validation process. They are run each quarter after most of the validation reports for that period have been returned and updated. This ensures Queensland Health maintains high quality data for dissemination. Perinatal data clean-up for Quarter 3 2010 is nearly complete with most facilities having returned their queries. Thank you for your ongoing support, with special thanks to facility staff who have responded promptly to the queries. It would be very much appreciated if facilities with outstanding queries please respond as soon as possible. If you have any questions about the clean-up process, please contact Shoshana Davies on 3254359 or email shoshana_davies@health.qld.gov.au

Availability of Customised Perinatal Data

The Health Statistics Centre (HSC) holds perinatal information collected via the PDC and is the central reference service for perinatal information enquiries, including requests for customised data. Within HSC, Statistical Output Unit provides a high quality statistical information service to internal and external clients, and provides an ad hoc data extraction service for clients. If you have a request for custom perinatal data or statistics, please contact the Health Statistics Centre on 3234 1875 or email HlthStat@health.qld.gov.au

For more information regarding customised data requests, please refer to <http://qheps.health.qld.gov.au/hic/cdr.htm>.

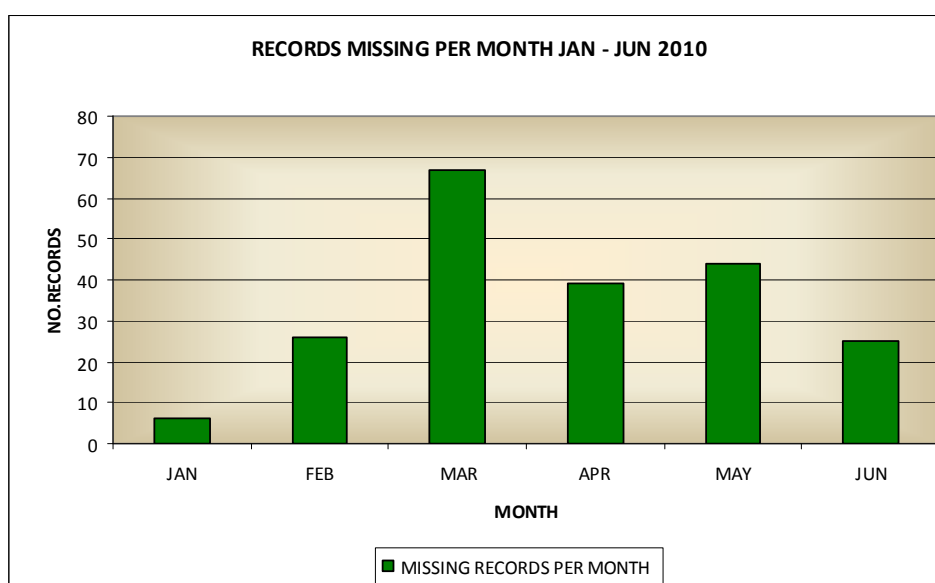
Reconciliation

Reconciliation for 2010 is almost complete with only missing December records to be identified. All requests for missing records have been sent, with most facilities having sent in the required records. There are still a small number of requests that are outstanding. Could those facilities please provide the necessary records as soon as possible to allow adequate time for the validations to be actioned and updated. If you have any questions regarding reconciliation, please contact Shoshana Davies on 3254359 or email shoshana_davies@health.qld.gov.au

Below is a graph identifying the number of missing records each month for January – June 2010. Identifying these missing records is a time consuming process. Once the missing records have been received, each of the records needs to be manually processed and inserted into the data base. If records are received from a facility who routinely supplies their records electronically, the header on the following months extract then needs to be amended by PDC to prevent the load from aborting.

Helpful Hint:

To reduce the time spent in checking reconciliation lists by hospital staff, if your hospital has a birth registrations list, please forward this when you submit your records each month.



Important Perinatal Dates

Please note the following due dates for data:

MARCH birth data due	05 May 2011
APRIL birth data due	06 June 2011
MAY birth data due	05 July 2011

Helpful Hint:

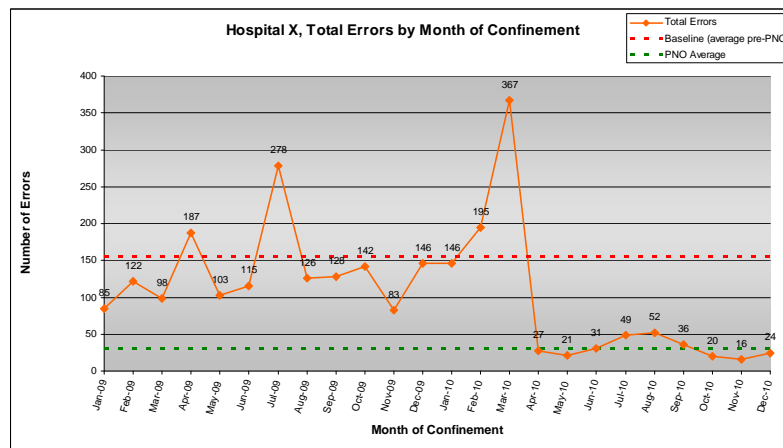
The month between when a birth occurs and when the data is due is an opportunity to check that your records have been accurately completed and that the *number of records being sent to PDC equals your facility births* for that month. This will save you time spent on future reconciliation and validation reports.

Perinatal Online Form

As of May 2011, thirty-five (35) facilities are supplying their data to the PDC using the Perinatal Online Application (PNO).

Feedback from hospitals using PNO continues to be positive. Common benefits of the application are improved data quality, noticeably reduced data validations, and reduced associated time required by the facility to investigate and respond to the validation reports.

Below is a graph of Hospital X with their pre PNO validation error rate compared with the post PNO validation error rate.



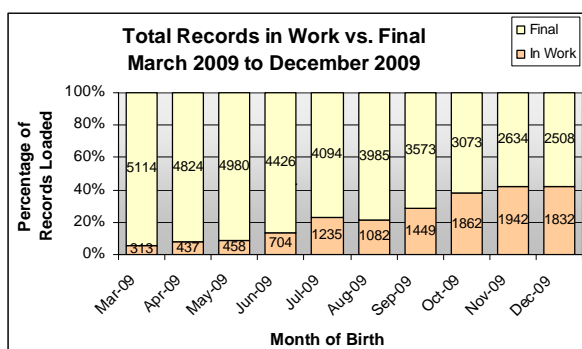
PDC provides onsite training and support for those facilities that choose to use PNO. Changes to the on-line form will be updated and maintained by PDC with maintenance and operating costs of the application being met by PDC. For more information regarding PNO, please contact Joanne Bunney on 3237 1464 or email joanne_bunney@health.qld.gov.au.

Quality Assurance of Data

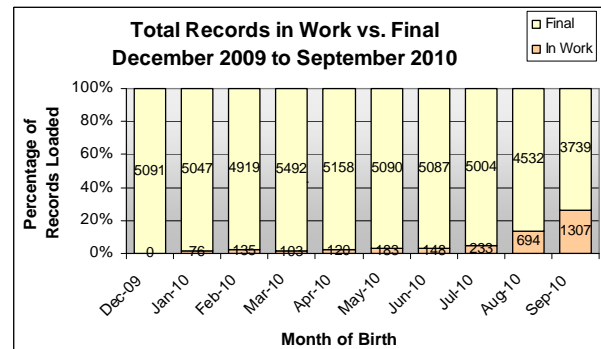
The Perinatal Data Collection team is focused on improving the quality of the perinatal data collected. With the majority of facilities now supplying their data electronically, PDC is now able to provide cleaner data in a more acceptable time frame. Data is received from electronic facilities the day it is extracted, with the resulting validation report being sent within 48 hours of the extract being processed.

The consistent improvement in the percentage of records in Final (complete and accurate) suggests an ongoing improvement in the timeliness of the data received, improved accuracy of the data received, prompt responses by hospital staff to validation reports, and timely updating of records by the PDC.

The PDC team would like to thank facility staff who have helped improve data quality and responded promptly to validation reports; your efforts are sincerely appreciated.



1. as at 13/04/2010



2. as at 24/01/2011

A variety of internal processes, checks and improvement activities are performed by the PDC team to ensure high quality perinatal data is available. Ongoing staff training and information sessions, regular coding and data entry quality audits, comprehensive procedures, and frequent use of performance data are used to assist in minimising coding and data entry errors. Data quality is a prime focus of the PDC team.

Validations

After records have been entered either manually or electronically into the PDC system, a validation report is generated. This report lists any inconsistent, incomplete, illogical or out of the ordinary responses in the record. If your facility receives a validation report it is important that you read the questions carefully, answer them completely and return the report by the due date. The PDC team would like to thank facility staff who have assisted in improving data quality by responding promptly to validation reports. Your contact officer will communicate any outstanding validation reports for records submitted.

Perinatal In-Service Workshops

PDC staff are available to facilitate Perinatal In-Service Workshops. Where possible, the in-service will be provided at a major facility with smaller facilities either sending staff to the major facility or linking up via video conference where available. Below is an outline of what staff at your facility will be provided with should you wish our staff to visit.

Target Audience

Any staff involved with the perinatal data, including clinicians that complete records and Health Information Managers.

Objectives

To provide information aimed at maximising data quality and reducing the errors generated on the facility validation report.

Structure

The structure and content of the training will be designed to meet your requirements. The in-service runs for approximately 1 hour, allowing 30 mins for the presentation and the remaining time for interaction with participants.

If you think staff from your facility would benefit from meeting with staff from the Perinatal Data Collection team please contact Colleen Morris on Ph 3234 0814 or via e-mail (colleen_morris@health.qld.gov.au) so that a suitable date/time can be arranged.

Congratulations and WELL DONE!

The PDC would like to generally thank staff at those facilities who are assisting the collection in achieving clean data for 2010, enabling PDC to meet its deadlines. Specific thanks also go out to staff at the following facilities:

Atherton	Very prompt responses to validation reports.
Bundaberg	Continued effort to reduce outstanding validation errors; prompt responses to validation reports; timely submission of data.
Caboolture	Continued effort to reduce outstanding validation errors; prompt responses to validation reports; timely submission of data.
Cairns	Continued reduction in validation reports.
Cairns Private	Prompt responses to validation reports, promptly catching up after Cyclone Yasi.
Ingham	Prompt responses to validation reports.
Innisfail	Prompt responses to validation reports, improved data quality (low validation error rates).
Gold Coast	Committed effort to reduce outstanding validation errors.
Goondiwindi	Improved data quality (low validation error rates); prompt responses to validation reports.
Home Birth Midwives	Improved data quality (low validation error rates); timely submission of data.
Logan	Proactive assistance of the Perinatal Data Collection.
Longreach	Improved data quality (low validation error rates), nil validations on latest extract, timely submission of data.
Mater Misericordiae Women's & Children's Private Health Service	Prompt responses to validation reports.
Mater Rockhampton	Prompt receipt of records, prompt responses to validation reports.
Mater Private Hospital Redland	Timely submission of data, very prompt responses to validation reports.
Mareeba	Prompt responses to validation reports.
North West	Prompt responses to validation reports.
Redcliffe	Continued improvement of data submission; efforts to reduce outstanding validation errors.
Royal Brisbane and Women's Hospital	Timely submission of data extracts, proactive communication.

St Andrew's – Ipswich Private Hospital	Timely submission of data, very prompt responses to validation reports.
Stanthorpe	Very high quality data, very prompt responses to validation reports
Sunnybank	Timely submission of data, very prompt responses to validation reports.
Thursday Island	Prompt responses to validation reports.
Warwick	Very prompt responses to validation reports, low validation error rates, timely submission of data extracts.

Top Five Most Frequent Error Messages, October to December 2010 Births Data

Error Message		Frequency
PD5000	Gestation days have not been provided.	1155
PD3146	Gestation at first antenatal visit is after 28 weeks. Please confirm.	1117
PD3145	Gestation at first antenatal visit is less than 06 weeks. (NB Visit to confirm pregnancy should not be included). Please confirm.	842
PD4190	Method of birth is caesarean but antibiotics received at time of caesarean has not been provided or is not valid. Please state if therapeutic or prophylactic.	482
PD5041	Indigenous status of the baby has not been provided or is not valid.	471

PD5000 Gestation days have not been provided.

GESTATION <input type="text"/> <input type="text"/> weeks <input type="text"/> days <small>(clinical assessment at birth)</small>

Enter the estimated gestational age of the baby in completed weeks and days, as determined by clinical assessment after birth. Do not use 'T' for term, or 'K'.

Gestational age is a key outcome of pregnancy and an important risk factor for neonatal outcomes.

PD3146 Gestation at first antenatal visit is after 28 weeks. Please confirm.

PD3145 Gestation at first antenatal visit is less than 06 weeks. (NB Visit to confirm pregnancy should not be included). Please confirm.

GESTATION AT FIRST ANTENATAL VISIT <input type="text"/> <input type="text"/> Weeks

Record the number of completed weeks of the current pregnancy when the mother had her first contact for antenatal care. The first contact for antenatal care is the first contact with a doctor or nurse where actual pre-birth maternity care was provided. It does not include a contact if it was to confirm the pregnancy only or those contacts that occurred during the pregnancy that related to other non pregnancy related issues.

PD4190 Method of birth is caesarean but antibiotics received at time of caesarean has not been provided or is not valid. Please state if therapeutic or prophylactic.

ANTIBIOTICS RECEIVED AT TIME OF CAESAREAN

Tick one box only

None	<input type="checkbox"/>
Prophylactic antibiotics received	<input type="checkbox"/>
Antibiotics already received	<input type="checkbox"/>

When the method of birth is either a lower segment caesarean section or a classical caesarean section, tick the box (one box only) that corresponds to the administration of antibiotics to the mother in relation to the caesarean.

If antibiotics were not received at the time of LSCS or classical caesarean section, tick the 'None' box.

If antibiotics have been received for prophylaxis of infection specifically associated with the caesarean, tick the 'Prophylactic antibiotics received' box.

If antibiotics have been received for a known condition (eg, chorioamnionitis, pneumonia, etc) at the time of LSCS or classical caesarean, tick the 'Antibiotics already received' box. This does not include antibiotic prophylaxis.

This information is used to assist the identification of adverse outcomes in relation to maternal health and wellbeing.

PD5041 Indigenous status of the baby has not been provided or is not valid.

INDIGENOUS STATUS – BABY

Aboriginal	<input type="checkbox"/>
Torres Strait Islander	<input type="checkbox"/>
Aborig. & Torres Str. Is.	<input type="checkbox"/>
Neither Aboriginal nor Torres Str. Is.	<input type="checkbox"/>

Tick the box (one box only) that corresponds to the Indigenous status of the baby.

Note that a baby's Indigenous status cannot be determined simply by observation and therefore this question must be asked of all mothers. For further information regarding determining Indigenous status, please refer to the 'Are you of Aboriginal or Torres Strait Islander origin?' pamphlet. If you require copies of this publication, please contact the National Centre for Aboriginal and Torres Strait Islander Statistics (Australian Bureau of Statistics) on the free call number 1800 633 216.

Perinatal Data Collection Team Contacts (as at May 2011)

Lynelle McCullagh(Mon-Wed) Phone 3224 1708	
00944	Darnley Island Primary Health Care Centre
00991	Gold Coast Birthing Centre
00050	Gold Coast Hospital
00998	Homebirths
00222	Innisfail Hospital
00015	Ipswich Hospital
00029	Logan Hospital
00172	Mackay Base Hospital
00995	Mackay Birthing Centre
00411	Mater Hyde Park Private Hospital
00173	Moranbah Hospital
00224	Mossman Hospital
00247	Normanton Health Service
00331	Pindara - Gold Coast Private Hospital
00949	Saibai Island Primary Health Care Centre
00366	St Vincent's Private Hospital
00145	Woorabinda Health Services

Lauren Kennedy Phone 3235 4354	
00063	Cherbourg
00064	Childers
00091	Chinchilla
00135	Emerald
00327	Mater Gladstone Private
00411	Mater Hyde Park Private Hospital
00380	Mater Rockhampton Private
00994	RBWH Birthing Centre
00201	Royal Brisbane and women's Hospital

Julie Bahr Phone 3234 0744	
00214	Cairns Base Hospital
00176	Dysart Hospital
00069	Hervey Bay Hospital
00197	Joyce Palmer Health Service
00156	Longreach Hospital
00370	Mater Private Hospital Redland
00098	Millmerran Hospital
00072	Monto Hospital
00246	Mt Isa Base Hospital
00049	Nambour General Hospital
00028	Redland Hospital
00141	Rockhampton Base Hospital
00317	Sunnybank Private Hospital
00334	Sunshine Coast Private Hospital
00200	The Townsville Hospital
00989	The Townsville Hospital Birthing Centre

Narelle Wright Phone 3234 0086	
00133	Biloela Hospital
00134	Blackwater Hospital
00113	Cunnamulla Hospital
00092	Dalby Hospital
00136	Gladstone Hospital
00093	Goondiwindi Hospital
00068	Gympie Hospital
00244	Hughenden Hospital
00196	Ingham Hospital
00253	Kowanyama Community Hospital
00223	Mareeba District Hospital
00401	Mater Mackay Private Hospital
00249	Mornington Island Hospital
00139	Mount Morgan Hospital
00320	North West Brisbane Private Hospital
00313	St Andrew's – Ipswich Private Hospital
00365	St Andrew's - Toowoomba
00100	Stanthorpe Hospital
00143	Theodore Hospital
00226	Thursday Island Hospital
00990	Toowoomba Birth Centre
00104	Toowoomba Hospital
00227	Tully Hospital
00228	Weipa Hospital
00229	Yarrabah Hospital

Shoshana Davies Phone 3235 4359	
00003	Mater Misericordiae Mothers' Public Hospital
00318	Mater Mothers' Private Health Service

Other Queries:

Quality Checks or In-Services Colleen Morris	3234 0814
Clean-up or Reconciliation Shoshana Davies	3235 4354
Deaths Processing Shoshana Davies	3235 4359
Perinatal Online Form Joanne Bunney	3237 1464

Stacey Ede Phone 3836 0969	
00211	Atherton Hospital
00191	Ayr Hospital
00041	Beaudesert Hospital
00192	Bowen Hospital
00062	Bundaberg Base Hospital
00030	Caboolture Hospital
00420	Cairns Private Hospital
00112	Charleville Hospital
00193	Charters Towers Hospital
00171	Clermont Hospital
00194	Collinsville Hospital
00216	Cooktown Hospital
00114	Dirranbandi Hospital
00252	Doomadgee Hospital
00025	Dunwich Health Service
00045	Gatton Hospital
00066	Gayndah Hospital
00441	John Flynn-Gold Coast Private Hospital
00070	Kingaroy Hospital
00097	Miles Hospital
00074	Munduberra Hospital
00332	Nambour Selangor Private Hospital
00174	Proserpine Hospital
00016	Redcliffe Hospital
00119	Roma Hospital
00120	St George Hospital
00101	Tara Hospital
00105	Warwick Hospital
00316	Wesley Private Hospital
00144	Yeppoon Hospital