

Mental Health Act 2000

Schedule of Authorised Mental Health Services

27 January 2012

Authorised Mental Health Service	Address
Bayside Authorised Mental Health Service	
Redland Hospital in-patient and specialist health units (excluding the grounds of the hospital and non-treatment facilities on the hospital campus)	Weippin Street, Cleveland, Q 4163
Daintree Psychogeriatric Inpatient Unit	New Lindum Road, Wynnum West, Q 4178
Wynnum Continuing Care	New Lindum Road, Wynnum West, Q 4178
Acquired Brain Injury Unit Extended Care	New Lindum Road, Wynnum West, Q 4178
Bayside Community Mental Health Service <ul style="list-style-type: none">• Redland Continuing Care Team• Bayside Child and Youth Mental Health Service• Acute Care Team• Older Persons Mental Health Service• Resource Recovery and Partnerships Team	2 Weippin Street, Cleveland, Q 4163
Belmont Private Hospital Authorised Mental Health Service	
Belmont Private Hospital in-patient and specialist health units, and grounds as approved by the Director of Mental Health and depicted by the outline on the hospital map attached at the end of the Schedule.	1220 Creek Road, Carina, Q 4152

Cairns Network Authorised Mental Health Service	
Cairns Base Hospital in-patient and specialist health units (excluding the grounds of the hospital and non-treatment facilities on the hospital campus)	The Esplanade, Cairns, Q 4870
Smithfield Mental Health Service (North Team)	Smithfield Community Health Centre, 16 Danbullan Street, Smithfield, Cairns, Q 4870
Acute Care Mental Health Service	165 Sheridan Street, Cairns, Q 4870
Child and Youth Mental Health Service	130 McLeod Street, Cairns, Q 4870
Evolve Team	1A Water Street, Cairns, Q 4870
Remote Area Mental Health Team	Third Floor, 85 Spence Street, Cairns, Q 4870
Homeless Health Outreach Team	Third Floor, 85 Spence Street, Cairns, Q 4870
Forensic Mental Health Team	1A Water Street, Cairns, Q 4870
Far North Queensland Intensive Rehabilitation and Recovery Support Team – FIRRSST	165 Sheridan Street, North Cairns, Q 4878
Edmonton Mental Health Service (South Team)	Edmonton Mental Health Service (South Team) 10-12 Robert Road, Edmonton, Q 4869
Innisfail Mental Health Service – Innisfail	Innisfail Hospital Q 4860
Innisfail District Community Mental Health Service – Tully	Tully Community Health Centre, Tully, Q 4854
Tablelands District Mental Health Service – Atherton	Atherton Health Centre, Louise Street, Atherton, Q 4883
Tablelands District Mental Health Service – Mareeba	Lloyd Street, Mareeba, Q 4880
Cape York Health Service District Mental Health & Alcohol, Tobacco and Other Drugs Service - Weipa	John Evans Drive, Weipa, Q 4874
Cape York Health Service District Mental Health & Alcohol, Tobacco and Other Drugs Service - Cooktown	Cooktown Multi Purpose Health Service, Hope Street, Cooktown, Q 4895
Torres Strait / Northern Peninsula Area Community Mental Health Service	Thursday Island Community Health Centre, Thursday Island Q 4875
Torres Strait / Northern Peninsula Area Community Mental Health Service	Bamaga Health Centre, Bamaga, Q 4876

Central Queensland Network Authorised Mental Health Service	
Rockhampton Hospital in-patient and specialist health units (excluding the grounds of the hospital and non-treatment facilities on the hospital campus)	Canning Street, Rockhampton, Q 4700
Community Mental Health Service	Quarry Street, Rockhampton, Q 4700
Child and Youth Mental Health Service	Quarry Street, Rockhampton, Q 4700
Psychogeriatric beds within Eventide Home	North and Campbell Street, Rockhampton, Q 4700
Capricorn Coast Community Mental Health Service	Capricorn Coast Hospital, 8 Hoskyn Drive, Yeppoon, Q 4703
Gladstone Community Adult Mental Health Service	Gladstone Hospital, Flinders Street, Gladstone, Q 4680
Gladstone Child and Youth Mental Health Service	Gladstone Hospital, Flinders Street, Gladstone, Q 4680
Gladstone Hospital Emergency Department	Gladstone Hospital, Flinders Street, Gladstone, Q 4680
Biloela Community Mental Health Service	Outpatients Department, Biloela Hospital, 2 Hospital Road, Biloela, Q 4715
Central Highlands Mental Health Service, Emerald	Community Health Service, on the hospital campus, Hospital Road, Emerald Q 4720
Fraser Coast Authorised Mental Health Service	
Hervey Bay Hospital in-patient and specialist health units (excluding the grounds of the hospital and non-treatment facilities on the hospital campus)	Corner Nissan and Urraween Roads, Q 4655
Maryborough Hospital in-patient and specialist health units (excluding the grounds of the hospital and non-treatment facilities on the hospital campus)	185 Walker Street, Maryborough, Q 4650
Fraser Coast Integrated Mental Health Service, Village Community Mental Health Service	34 Torquay Road, Pialba, Q 4655
Fraser Coast Integrated Mental Health Service, Bauer Wiles Community Health Centre	167 Neptune Street, Maryborough, Q 4650
Gold Coast Authorised Mental Health Service	
Gold Coast Hospital, Southport Campus in-patient and specialist health units (excluding the grounds of the hospital and non-treatment facilities on the hospital campus)	Nerang Street, Southport, Q 4215
Gold Coast Hospital, Robina Campus in-patient and specialist health units (excluding the	2 Bayberry Lane, Robina, Q 4226

grounds of the hospital and non-treatment facilities on the hospital campus)	
Burleigh Child and Youth Mental Health Service	18 Park Avenue, Burleigh Heads, Q 4220
Palm Beach Community Clinic	9 Fifth Avenue, Palm Beach, Q 4221
Ashmore Community Mental Health Service	Suite 10, Ashmore Commercial Centre, 207 Currumburra Road, Ashmore, Q 4214
Southport Child and Youth Mental Health Service	60 High Street, Southport, Q 4215
Gold Coast Early Psychosis Service	191 West Burleigh Road, West Burleigh, Q 4220
Child and Youth Mental Health Service – Access Team	Suite 13, Riverwalk Place, 238 Robina Town Centre Drive, Robina, Q 4226
Child and Youth Mental Health Service – Evolve Therapeutic Services	Level 1, 67 Davenport Street, Southport, Q 4215
Greenslopes Private Hospital Authorised Mental Health Service	
Greenslopes Private Hospital in-patient and specialist health units and grounds as approved by the Director of Mental Health and depicted by the outline on the hospital map attached at the end of the Schedule.	Newdegate Street, Greenslopes, Q 4120
Logan-Beaudesert Authorised Mental Health Service	
Logan Hospital in-patient and specialist health units (excluding the grounds of the hospital and non-treatment facilities on the hospital campus)	Corner Armstrong and Loganlea Roads, Meadowbrook, Q 4131
Beenleigh Adult Mental Health Service	10-18 Mount Warren Boulevard, Mt Warren Park, Q 4207
Beenleigh Child and Youth Mental Health Service	10-18 Mount Warren Boulevard, Mt Warren Park, Q 4207
Logan Central Adult Mental Health Service	Corner Wembley and Ewing Roads, Logan Central, Q 4114
Mental Health Community Centre	51 Wembley Road, Logan Central, Q, 4114
Child and Youth Mental Health Service	91 Wembley Road, Logan Central, Q 4114
Child and Youth Mental Health Service	39a Wembley Road, Logan Central, Q 4114
Child and Youth Mental Health Service	39b Wembley Road, Logan Central, Q 4114
Acute Care Team	91 Wembley Road, Logan, Q 4114

Evolve Therapeutic Support Service	Unit 12, 3-19 University Drive, Meadowbrook, Q 4131
Older Persons Mental Health	2 Mooney Street, Logan, Q 4114
Alternatives to Hospitalisation Program	91 Wembley Road, Logan, Q 4114
Beaudesert Hospital – Community Mental Health Service	Beaudesert Hospital, Tina Street, Beaudesert, Q 4285
Mobile Intensive Treatment Team	91 Wembley Road, Logan, Q 4114
Browns Plains Adult Community Mental Health Service	Cnr Middle Road and Wineglass Drive, Hillcrest, Q 4118
Mackay Authorised Mental Health Service	
Mackay Base Hospital in-patient and specialist health units (excluding the grounds of the hospital and non-treatment facilities on the hospital campus)	Bridge Road, Mackay, Q 4740
Mackay Integrated Adult Mental Health Service	12-14 Nelson Street, Mackay, Q 4870
Mackay Child and Youth Mental Health Service	12-14 Nelson Street, Mackay, Q 4870
Whitsunday Community Health Centre	12 Altmann Avenue, Cannonvale, Q 4802
Moranbah District Mental Health Service	Moranbah Community Health Centre, 142 Mills Avenue, Moranbah, Q 4744
Bowen Community Mental Health Service	Gregory Street, Bowen, Q 4805
Whitsunday Mental Health Service	26-32 Taylor Street, Proserpine, Q 4800
Mater Health Services Child and Youth Authorised Mental Health Service	
Mater Children’s Hospital in-patient and specialist health units (excluding the grounds of the hospital and non-treatment facilities on the hospital campus)	Raymond Terrace, South Brisbane, Q 4101
Mater Child and Youth Mental Health Service	Raymond Terrace, South Brisbane, Q 4101
Greenslopes Clinic – Mater Child & Youth Mental Health Service	34 Curd Street, Greenslopes, Q 4120
Inala Clinic – Mater Child & Youth Mental Health Service	7 Kittyhawk Avenue, Inala, Q 4077
Yeronga Clinic – Mater Child & Youth Mental Health Service	51 Park Road, Yeronga, Q 4104
Brisbane South Evolve – Mater Child & Youth Mental Health Service	Ground Floor, Block C, Garden Square, 643 Kessels Road, Mt

	Gravatt, Q 4122
New Farm Clinic Authorised Mental Health Service	
New Farm Clinic in-patient and specialist health units, and grounds as approved by the Director of Mental Health and depicted by the outline on the hospital map attached at the end of the Schedule.	22 Sargent Street, New Farm, Q 4005
Princess Alexandra Hospital Authorised Mental Health Service	
Princess Alexandra Hospital in-patient and specialist health units (excluding the grounds of the hospital and non-treatment facilities on the hospital campus)	Ipswich Road, Woolloongabba, Q 4102
Burke Street Community Mental Health Service	2 Burke Street, Woolloongabba, Q 4102
Inala Adult Mental Health Service	64 Wirraway Parade, Inala, Q 4077
Mount Gravatt Adult Mental Health Service	519 Kessels Road, Macgregor, Q 4109
Mater Misericordiae Hospital (Adult and Mothers) in-patient and specialist health units (excluding the grounds of the hospital and non-treatment facilities on the hospital campus)	Raymond Terrace, South Brisbane, Q 4101
Queen Elizabeth 11 Jubilee Hospital in-patient and specialist health units (excluding the grounds of the hospital and non-treatment facilities on the hospital campus)	Kessels Road, Coopers Plains, Q 4108
Redcliffe Caboolture Authorised Mental Health Service	
Caboolture Hospital in-patient and specialist health units (excluding the grounds of the hospital and non-treatment facilities on the hospital campus)	9 McKean Street, Caboolture, Q 4510
Redcliffe Hospital in-patient and specialist health units (excluding the grounds of the hospital and non-treatment facilities on the hospital campus)	Anzac Avenue, Redcliffe, Q 4020
Caboolture Adult Mental Health Service	Unit 5-6, 69 King Street, Caboolture, Q 4510
Redcliffe Adult Mental Health Service	181 Anzac Avenue, Kippa Ring, Q 4020
Redcliffe-Caboolture Child and Youth Mental Health Service	181 Anzac Avenue, Kippa Ring, Q 4020

Redcliffe-Caboolture Child and Youth Mental Health Service	80 King Street, Caboolture, Q 4510
Cooinda House Psychogeriatric Unit	60 George St, Kippa Ring, Q 4020
Royal Brisbane and Women's Hospital Authorised Mental Health Service	
Royal Brisbane and Women's Hospital in-patient and specialist health units (excluding the grounds of the hospital and non-treatment facilities on the hospital campus)	Herston Road, Herston, Q 4029
Inner North Brisbane Mental Health Service	162 Alfred Street, Fortitude Valley, Q 4006
Royal Children's Hospital Authorised Mental Health Service	
Royal Children's Hospital in-patient and specialist health units (excluding the grounds of the hospital and non-treatment facilities on the hospital campus)	Bramston Terrace, Herston, Q 4029
The Royal Children's Hospital and Health Service District Child and Youth Mental Health Service	Corner Rogers and Waters Streets, Spring Hill, Q 4000
Evolve Therapeutic Services	289 Wardell Street, Enoggera, Q 4051
Nundah Child and Youth Mental Health Clinic	Nundah Community Health Centre, 10 Nellie Street, Nundah, Q 4012
Pine Rivers Child and Youth Mental Health Clinic	Pine Rivers Community Health Centre, 568 Gympie Road, Strathpine, Q 4500
North West Child and Youth Mental Health Clinic	North West Community Health Centre, 49 Corrigan Street, Keperra, Q 4054
Future Families	31-33 Robinson Road, Nundah, Q 4012
Sunshine Coast Network Authorised Mental Health Service	
Nambour Hospital in-patient and specialist health units (excluding the grounds of the hospital and non-treatment facilities on the hospital campus)	Hospital Road, Nambour, Q 4560

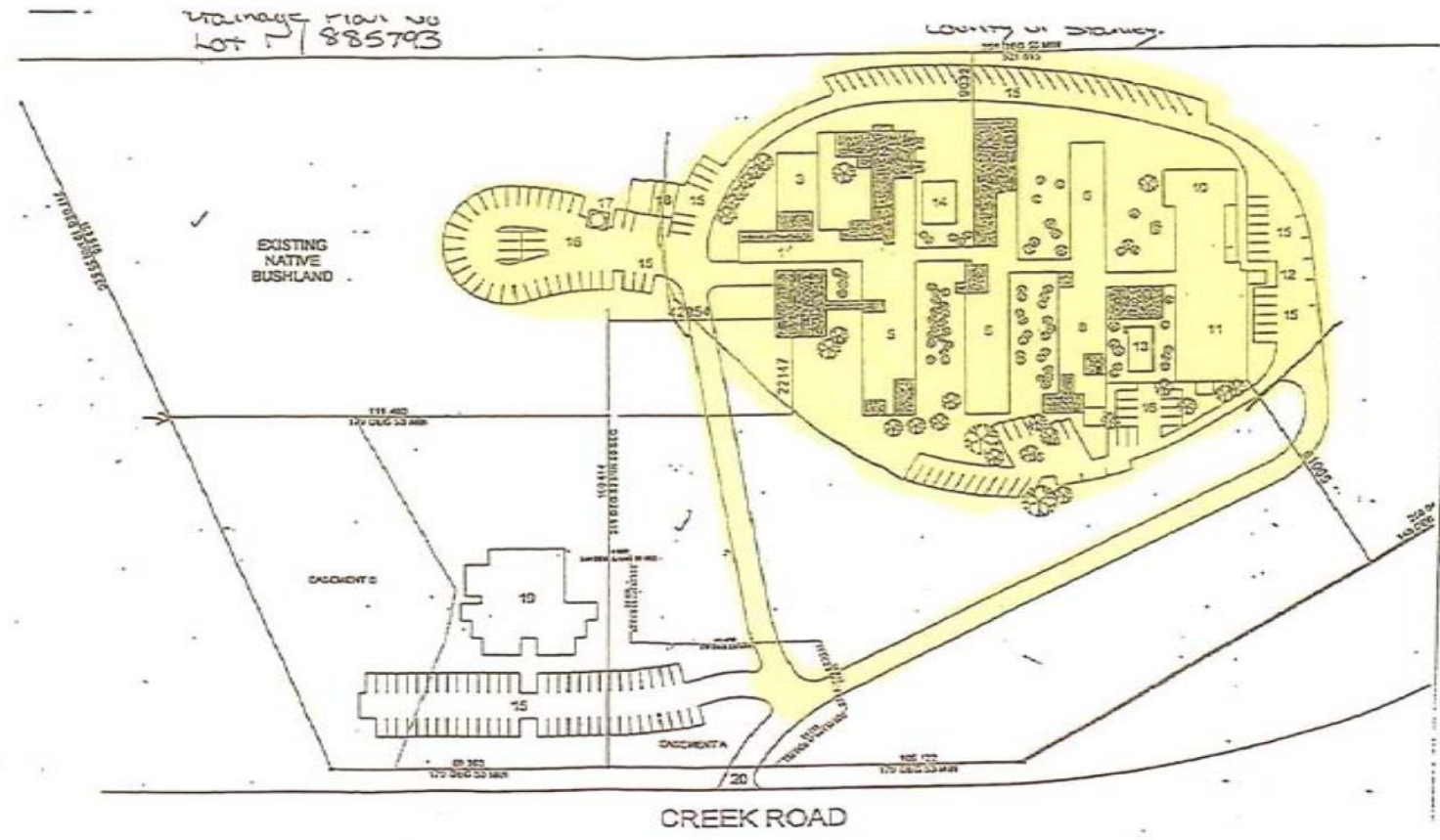
Glenbrook Residential Aged Care Unit	4 Jack Street, Nambour, Q 4560
Gympie Mental Health Service	20 Alfred Street, Gympie, Q 4570
Community Mental Health Service	Ground Floor, Centenary Square, Nambour 4560
Community Mental Health Service	100 Sixth Avenue, Maroochydore, Q 4558
Child and Youth Mental Health Service	15 Beach Road, Maroochydore, Q 4558
Mobile Outreach Team	6 Lady Musgrave Drive, Mountain Creek, Q 4557
Evolve Therapeutic Support Team	108 Brisbane Road, Mooloolaba, Q 4557
The Park – Centre for Mental Health Authorised Mental Health Service	
The Park – Centre for Mental Health in-patient and specialist health units (excluding the grounds of the hospital and non-treatment facilities on the hospital campus)	The Park Centre for Mental Health Treatment, Education & Research, Corner Ellerton Drive and Wolston Park Road, Wacol Q 4076
The Park High Security Program Authorised Mental Health Service	
The Park High Security Program	The Park Centre for Mental Health Treatment, Education & Research, Cnr Ellerton Drive and Wolston Park Road, Wacol Q 4076
The Prince Charles Hospital Authorised Mental Health Service	
The Prince Charles Hospital in-patient and specialist health units (excluding the grounds of the hospital and non-treatment facilities on the hospital campus)	Rode Road, Chermside, Q 4032
Aspley Community Mental Health Service	Cnr Zillmere and Brickfield Road, Aspley, Q 4034
Nundah Community Mental Health Service	Corner Nellie Street and Melton Road, Nundah Q 4012
Pine Rivers Community Mental Health Service	568 Gympie Road, Strathpine, Q 4500
Chermside Community Mental Health Service	The Prince Charles Hospital, Rode Road, Chermside, Q 4032
The Prince Charles Hospital Acquired Brain Injury/Mental Health Unit	Eventide, Beaconsfield Terrace, Brighton, Q 4017
16 Psychogeriatric beds within Flinders House Eventide Nursing Home	Eventide, Beaconsfield Terrace, Brighton, Q 4017

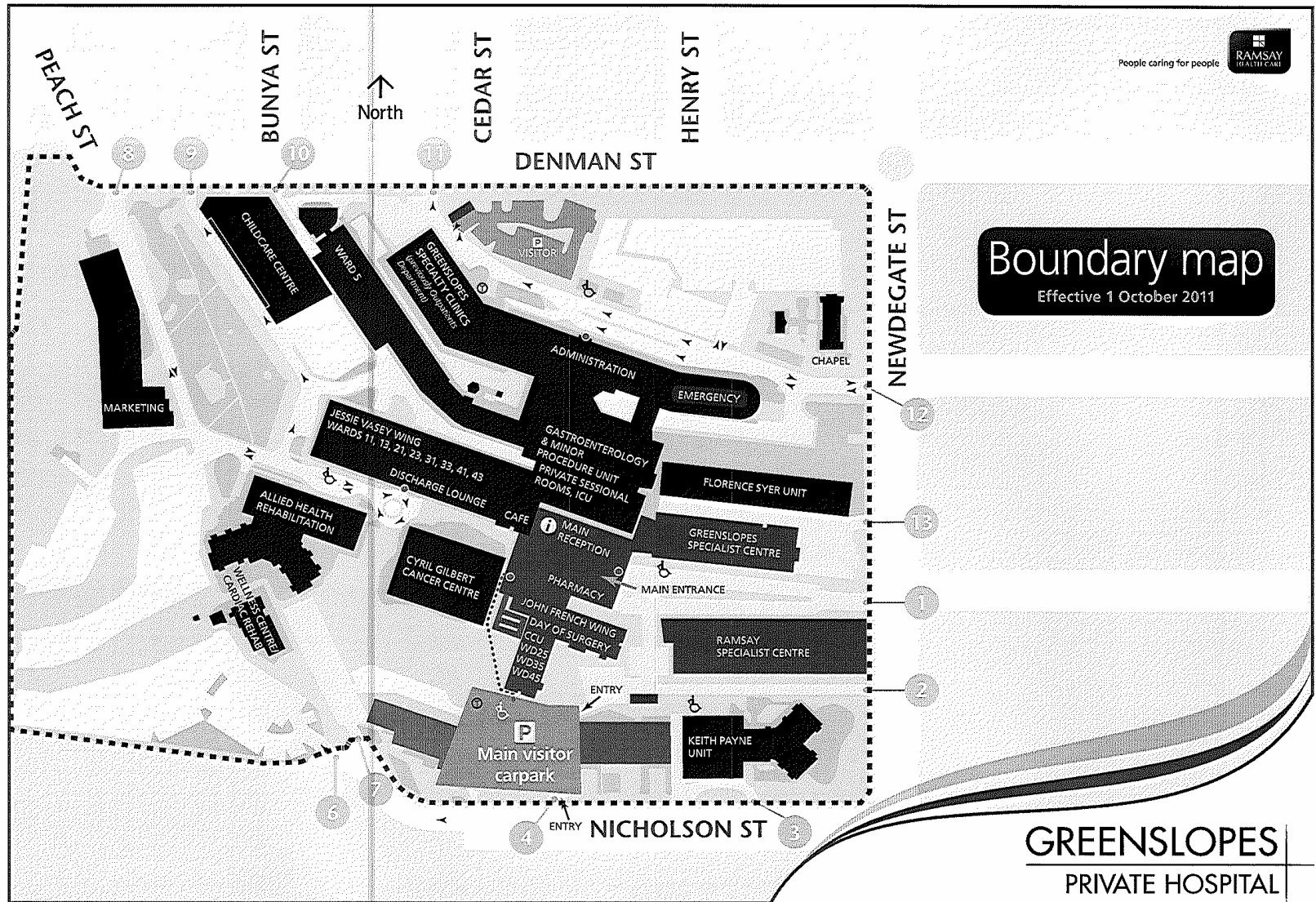
Toowong Private Hospital Authorised Mental Health Service	
Toowong Private Hospital in-patient and specialist health units, and grounds as approved by the Director of Mental Health and depicted by the outline on the hospital map attached at the end of the Schedule.	496 Milton Road, Toowong, Q 4066
Toowoomba and Darling Downs Network Authorised Mental Health Service	
Toowoomba Hospital in-patient and specialist health units (excluding the grounds of the hospital and non-treatment facilities on the hospital campus)	Pechey Street, Toowoomba, Q 4350
Baillie Henderson Hospital in-patient and specialist health units (excluding the intellectual disability beds, the grounds of the hospital and non-treatment facilities on the hospital campus)	Hogg Street, Toowoomba, Q 4350
Toowoomba Community Mental Health Service	Fountain House, Toowoomba Hospital, Pechey Street, Toowoomba, Q 4350
Child and Youth Mental Health Service	Pechey Street, Toowoomba, Q 4350
Older Persons Mental Health Service	Armstrong Clinic, Toowoomba Hospital, Pechey Street, Toowoomba, Q 4350
Dalby Mental Health Service	Dalby Hospital, Hospital Road, Dalby, Q 4405
Stanthorpe Community Mental Health Service	The Boulders Stanthorpe Hospital, McGregor Terrace, Stanthorpe, Q 4380
Southern Downs Community Mental Health Service	McCarthy House, 56 Locke Street, Warwick, Q 4370
Chinchilla Mental Health Service	Cnr Heeney and Hypatia Street, Chinchilla, Q 4413
Roma Community Mental Health Service	Arthur Street, Roma, Q 4455
Charleville Community Mental Health Service	2 Eyre Street, Charleville, Q 4470
Goondiwindi Mental Health Service	122 Marshall Street, Goondiwindi, Q 4390
South Burnett Mental Health Service	166 Youngman Street, Kingaroy, Q 4610
Townsville Network Authorised Mental Health Service	
Townsville Hospital in-patient and specialist health units (excluding the grounds of the hospital	100 Angus Smith Drive, Douglas, Townsville, Q 4814

and non-treatment facilities on the hospital campus)	
Ayr Community Mental Health Service	Ayr Hospital, 2 Chippendale Street, Ayr Q 4807
Townsville Community Care Unit and Acquired Brain Injury Unit	Thuringowa Drive, Kirwan, Q 4817
Palm Island Community Mental Health Service	Joyce Palmer Hospital, Palm Island, Q 4816
Ingham Community Mental Health Service	Ingham Community Health, McIlwraith Street, Ingham, Q 4850
Charters Towers Community Mental Health Service	Gill Street, Charters Towers, Q 4820
Charters Towers Rehabilitation and Transitional Unit	Gladstone Road, Charters Towers, Q 4820
Pandanas Special Care Unit	Eventide Nursing Home, Charters Towers, Q 4820
Townsville Community Mental Health Service	138 Thuringowa Drive, Kirwan, Q 4817
Townsville Homeless Health Outreach Team	142-201 Walker Street, Townsville Q 4810
Parklands Residential Aged Care Facility- Pandora Unit	138 Thuringowa Drive, Kirwan, Q 4817
Townsville Community Mental Health Service	33 Gregory Street, North Ward Q 4810
Mount Isa Integrated Mental Health Service	26-28 Camooweal Street, Mt Isa, Q 4825
West Moreton Network Authorised Mental Health Service	
Ipswich Hospital in-patient and specialist health units (excluding the grounds of the hospital and non-treatment facilities on the hospital campus)	Chelmsford Street, Ipswich, Q 4305
West Moreton Integrated Mental Health Service	Bell Street, Ipswich, Q 4305
Evolve Therapeutic Service - Ipswich	Ipswich Health Plaza, 12 Bell Street, Ipswich, Q 4305
West Moreton Child and Youth Mental Health Service	Ipswich Health Plaza, 12 Bell Street, Ipswich, Q 4305
Goodna Community Health Centre	81 Queen Street, Goodna, Q 4300
Gatton Community Mental Health Service	97-103 William Street, Gatton, Q 4343
Wide Bay Authorised Mental Health Service	
Bundaberg Hospital in-patient and specialist health units (excluding the grounds of the hospital and non-treatment facilities on the hospital campus)	Bourbong Street, Bundaberg Q 4670

Bundaberg Adult Community Mental Health Service	Bourbong Street, Bundaberg Q 4670
Bundaberg Child and Youth Mental Health Service including Evolve Therapeutic Services	Bourbong Street, Bundaberg Q 4670
Wide Bay Rural Mental Health Team	<ul style="list-style-type: none"> ▪ Gayndah Hospital, 69 Warton Street, Gayndah, Q 4625 ▪ Monto Hospital, Flinders Street, Monto, Q 4630 ▪ Childers Hospital, 44 Broadhurst Street, Childers, Q 4660 ▪ Gin Gin Hospital, 5 King Street, Gin Gin, Q 4671

Boundaries of the Belmont Private
Hospital Authorised Mental Health
Service





Boundary map
Effective 1 October 2011

GREENSLOPES
PRIVATE HOSPITAL