

Office of Rural & Remote Health

CAIRNS BRANCH - WILLIAM McCORMACK PLACE, 6TH FLOOR, 5 SHERIDAN STREET, CAIRNS 4870
POSTAL ADDRESS: PO BOX 7193 CAIRNS 4870 Ph 42263000 / Fax 42263040

Primary Health Happenings

Edition 27 January
2012

Contents

*

PCCM dissemination

*

New Chronic Disease
diagnosed condition
guidelines - Heart Failure
and Dementia

*

National registration for
Aboriginal and Torres
Strait Islander health
practitioners to commence
on 1 July 2012

*

Rural and Isolated Practice
Endorsement cohort
Cunningham Centre

*

Dates **Women's Health
Clinic's** January and
February 2012

*

Telehealth makes a
difference to the lives of
patients in Cape York

*

Immunisation Program
Registered Nurse Courses
2012

*

**Continuous Quality
Improvement** in primary
healthcare Foundation
Training (**One21seventy**)

*

Diabetes Workshops
February and throughout
2012

Happy new year

Upcoming events for 2012

- ❖ Distribution of Primary Clinical Care Manual 7th edition 2011
- ❖ New Diagnosed condition guideline available on the Chronic Disease Guideline website Heart Failure and Dementia
- ❖ National registration for Aboriginal and Torres Strait Islander health practitioners will commence through The Aboriginal and Torres Strait Islander Practice Board of Australia (the Board) on 1 July 2011
- ❖ National Recommendations for User-applied Labelling of Injectable Medicines, Fluids and Lines. *Australian Commission on Safety and Quality in HealthCare*
- ❖ Accreditation - National Safety and Quality Health Service Standards *Australian Commission on Safety and Quality in HealthCare*
- ❖ Immunisation Program Registered Nurse courses
- ❖ AND lots more.....



The dissemination of the Primary Clinical Care Manual 7th edition 2011 commenced on the 9th January 2012 to eligible facilities

A reminder – once the new edition arrives please ensure the 6th edition has been disposed.

Users are responsible for accessing the most recent version

www.health.qld.gov.au/pccm/

An Important Announcement

The Aboriginal and Torres Strait Islander Health Practice Board of Australia (the Board) was appointed in July 2011 to prepare for the start of national registration for Aboriginal and Torres Strait Islander health practitioners on 1 July 2012.

The Board has recently consulted on

- Advertising guidelines
- Code of conduct for registered health practitioners
- Guidelines for mandatory notifications

Documents are available on the Board's website at:

<http://www.ahpra.gov.au/NRAS.aspx>.

The Board has previously consulted on five mandatory registration standards

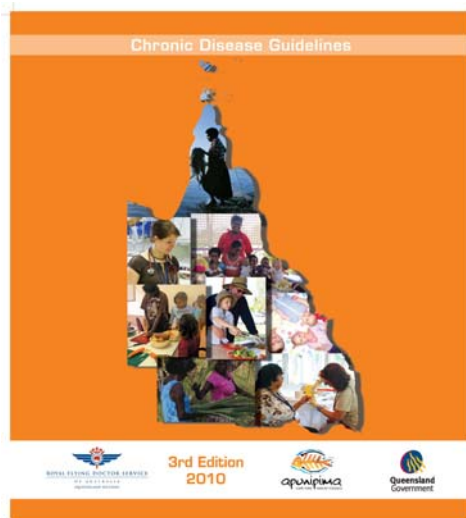
- continuing professional development
- criminal history
- English language skills
- professional indemnity insurance
- recency of practice

Plus three additional standards

- grand-parenting provisions
- eligibility for registration and
- the requirement that Aboriginal and Torres Strait Islander health practitioners be an Aboriginal and/or Torres Strait Islander person

These standards have now been finalised by the Board and forwarded to Health Ministers for their agreement. Once Health Ministers have agreed to the final standards, these will be available on the Board's website.

For further information contact Aboriginal and Torres Strait Islander Health Branch at <http://www.health.qld.gov.au/atsihealth/> or email ATSIHB@health.qld.gov.au or phone 07 32276624, 07 3225 2426 or 07 32340320



New ★

Management of diagnosed conditions

☞ **Heart Failure**

☞ **Dementia**

available at:

www.health.qld.gov.au/cdg

Accreditation

National Safety and Quality Health Service Standards (NSQHS)

developed by the [Australian Commission on Safety and Quality in HealthCare](#).

The primary aims of the NSQHS Standards are to protect the public from harm and to improve the quality of health service provision. They provide quality assurance mechanism that tests whether relevant systems are in place to ensure minimum standards of safety and quality are met, and a quality improvement mechanism allows health services to realise aspirational or development goals.

The standards are integral to the accreditation process as they determine how and against what an organisation's performance will be assessed. The Standards have been designed for use by all health services. Health service organisations can use the Standards as part of their internal quality assurance mechanisms or as part of an external accreditation process.

The 10 Standards

1. **Governance for Safety and Quality in Health Service Organisations** which describes the quality framework required for health service organisations to implement safe systems
2. **Partnering with Consumers** which describes the systems and strategies to create a consumer-centred health system by including consumers in the development and design of quality health care
3. **Preventing and Controlling Healthcare Associated Infections** which describes the systems and strategies to prevent infection of patients within the healthcare system and to manage infections effectively when they occur to minimise the consequences
4. **Medication Safety** which describes the systems and strategies to ensure clinicians safely prescribe, dispense and administer appropriate medicines to informed patients
5. **Patient Identification and Procedure Matching** which describes the systems and strategies to identify patients and correctly match their identity with the correct treatment
6. **Clinical Handover** which describes the systems and strategies for effective clinical communication whenever accountability and responsibility for the patient's care is transferred
7. **Blood and Blood Products** which describes the systems and strategies for the safe, effective and appropriate management of blood and blood products so the patients receiving blood are safe
8. **Preventing and Managing Pressure Injuries** which describes the systems and strategies to prevent patients developing pressure injuries and best practice management when pressure injuries occur
9. **Recognising and Responding to Clinical Deterioration in Acute Health Care** which describes the systems and process to be implemented by health service organisations to respond effectively to patients when their clinical condition deteriorates
10. **Preventing Falls and Harm from Falls** which describes the systems and strategies to reduce the incidence of patient falls in health service organisations and best practice management when falls do occur

For more information go to

[http://www.safetyandquality.gov.au/internet/safety/publishing.nsf/Content/CA1C4B7F4C5B5547CA257793000528D5/\\$File/NSQHS-Standards-Sept2011.pdf](http://www.safetyandquality.gov.au/internet/safety/publishing.nsf/Content/CA1C4B7F4C5B5547CA257793000528D5/$File/NSQHS-Standards-Sept2011.pdf)

Immunisation Program Course Dates 2012
Registered Nurse
Health (Drugs & Poisons) Regulations 1996

Expression of Interest Close	Course Commences	Workshop Component/Location	Course Completion
30/1/2012	12/3/2012	11 & 12 April 2012 (Cairns)	07/09/2012
05/03/2012	16/04/2012	16 & 17 May 2012 (Townsville)	12/10/2012
26/3/2012	07/05/2012	6 & 7 June 2012	02/11/2012

Dates for the remainder of 2012 to be advised

For further information see Cunningham Course Calendar

[Http://www.health.qld.gov.au/cunninghamcentre/html/nursing/asp](http://www.health.qld.gov.au/cunninghamcentre/html/nursing/asp)

Further Information

Donna Palmer

Nurse Educator – Immunisation

Cunningham Centre-Cairns

Office of Rural and Remote Health

To obtain and Brochure and Handbook contact

Client Support Officer

p. 07 4226 3053 f. 07 4226 3040

e. CunninghamCentreCairns@health.qld.gov.au

Cunningham Centre

rural • remote • health • education

WOMENS' HEALTH CLINICS January & February 2012

***Babinda, Innisfail, Cardwell, Tully, Jumbun, Mission Beach
Port Douglas, Cow Bay, Julatten, Mossman
Edmonton, Yarrabah, Smithfield, JCU
Mareeba, Atherton, Millaa Millaa, Malanda, Herberton, Chillagoe
Cooktown***

Clinics are conducted by a Mobile Women's Health Nurse (MWHN) trained in Women's and Sexual Health (employed by Queensland Health)

Services offered at the clinics at no cost include -

Pap Smears, Sexual Health Screening
Education/information on:
Menopause, Breast Health, Nutrition
Contraception, Healthy Lifestyle etc

Referrals can be made to other health service providers if required.

Women of all ages (INCLUDING QH STAFF) are welcome and appointments can be made by phoning the numbers listed beside the clinics below

Location	Phone	Date
Tully Hospital	4068 4144	Wednesday 18th January
Mission Beach	4068 9722	Thursday 19th January
Edmonton	4226 4900	Monday 23rd January
Babinda	4067 8200	Tuesday 24th January
Innisfail Hospital	0428 781 421	Wednesday 25th January
Port Douglas	4099 5518	Monday 30th January
Yarrabah	4056 0100	Monday 30th January
Innisfail Mamu HS	4061 4477	Tuesday 31st January
Cow Bay	4098 9296	Tuesday 31st January
Julatten	4094 2037	Wednesday 1st Feb (am)
Mossman	4098 2005	Wednesday 1st Feb (pm)
Tully - Mamu HS	4061 5190	Wednesday 1st Feb
Mareeba Hospital	4092 9322	Thursdays 2nd & 16th Feb
Smithfield	4226 4800	Fridays 3rd & 17th Feb
Innisfail Hospital	4226 4812	Monday 6th Feb
Mareeba - Mulungu	4092 3428	Monday 6th Feb
Millaa Millaa	4097 2223	Tuesday 7th Feb
Babinda - Mamu HS	4061 4477	Tuesday 7th Feb
Tully Hospital	4068 4144	Wednesday 8th Feb
Malanda	4096 5339	Wednesday 8th Feb
Herberton	4096 2222	Thursday 9th Feb

Edmonton	4226 4900	Thursday 9 th Feb
Atherton	4091 0263	Friday 10 th Feb
Chillagoe	4094 7500	Wednesday 15 th Feb
Cardwell Mamu HS	4061 5190	Wednesday 15 th Feb
Mission Beach	4068 9722	Thursday 16 th Feb
Jumbun	4066 1409	Friday 17 th Feb
Yarrabah	4056 0100	Monday 20 th Feb
James Cook Uni	4226 4812	Tuesday 21 st Feb
Babinda Hospital	4067 8200	Tuesday 21 st & Wed 22 nd Feb
Cooktown	4043 0170	Thursday 23 rd Feb

National Recommendations for User-applied Labelling of Injectable Medicines, Fluids and Lines

Labelling of injectable medicines and fluids, and the devices used to deliver them, has been identified as a patient safety issue. The [Australian Commission on Safety and Quality in Health Care](#) has developed **National Recommendations for User-applied Labelling of Injectable Medicines, Fluids and Lines** to improve safety in this important practice area. The recommendations have been approved for implementation into Australian hospitals by the Australian Health Ministers.

The Labelling Recommendations aim to:

1. promote safer use of injectable medicines
2. standardise user-applied labelling of injectable medicines
3. provide minimum requirements for user-applied labelling of injectable medicines

The Queensland Health (QH) Patient Safety and Quality Executive Committee (PSQEC) has endorsed Medication Services Queensland (MSQ) to manage the implementation of the Labelling Recommendations into QH facilities.

Scope of recommendations

- The Labelling Recommendations apply to ALL injectable products prepared in the ward or clinical area and include recommendations for labelling containers (bags, bottles and syringes and conducts (lines and catheters).
- The Labelling Recommendations identify:
 - what should be labelled
 - what labels should be used
 - what should be included on the label
 - where the label should be placed

Following an Early Adopter Implementation and evaluation, MSQ will progress implementation of the Labelling recommendations across the state. Statewide implementation is expected to be completed by December 2012.

The recommendations and other relevant information can be access via the following website:

http://www.safetyandquality.gov.au/internet/safety/publishing.nsf/Content/PriorityProgram-06_UaLIMFL

Telehealth makes a difference to the lives of patients in Cape York

Through the use of telehealth people in Cape York receive specialist care without leaving their community



Cancer Australia Indigenous Cancer Care Coordination (CAICCC) for Far North Queensland (FNQ) project

The CAICCC for FNQ project will be working with Aboriginal & Torres Strait Islander peoples residing in Cape York and Torres & Northern Peninsula HSD with joint Federal and State funding for the project obtained until Dec 2012.

The project aim is to develop a model of care and service delivery, which includes Telehealth services, to meet the supportive care needs of Aboriginal & Torres Strait Islander peoples living in rural & remote locations that can be replicated throughout the nation.

CAICCC for FNQ project telehealth services were commenced in November 2011. Feedback received from post discharge telehealth consultations to the Cancer Care Centre has been positive from both patients and staff.

Post Discharge Cardiac Reviews

To relieve congestion within the CBH Cardiology Clinic and reduce patient travel for cardiac patients, post discharge reviews for Post Cardiac Intervention (PCI) and Heart Failure the option for patients to have their appointments via video conferencing was introduced. Routinely patients are now scheduled for telehealth consultation enabling them to attend appointments in their community health care facility. Feedback from staff and patients has been positive with patients opting to continue using video conferencing where possible for future cardiac appointments.

ENT Post Outreach Surgical Reviews

Following the ENT Surgical Outreach clinics in September & October, many patients were able to have their ear reviews via telehealth using the 'Store & Forward' process. When the patients attend their appointment at the local clinic, the Health Worker uses a video otoscope to take and send images of their ears to the ENT specialist to be reviewed. An Outpatient clinic letter is sent to the health care facility advising of the outcome. This enables patients to be reviewed within recommended guidelines rather than waiting for an appointment with the next surgical outreach clinic. It also allows more flexibility for the patient as they can make their appointment to suit their needs rather than having to fit in when the consultant is available e.g. school children can attend after school hours.

Trials are currently being undertaken to assess the advantage of taking and sending images with new ENT Referrals. These are examples of telehealth service provided to the Cape. For more information contact Sonjia Alderson, CYDSH Telehealth Coordinator Phone (07) 4226 3038 or email Sonjia_alderson@health.qld.gov.au

New cohort Rural and Isolated Practice Health (Drugs and Poisons) Regulation 1996 Registered Nurse Course



From back left: Dorothee Roberts (Stanthorpe), Marie Barnes (Weipa), Jo Trezise (Murray Island), Guy Trezise (Murray Island), Jan Demaine (Warraber Island), Tui Creely (Goondiwindi), Suzi Wood (Bamaga), Teresa Hazel (Coen).

From front left: Nicola Bagley (Weipa), Kath Percival (Bowen), Chris Penfold (Aurukun), Wendy Burr (Mareeba) met in Cairns for the introductory workshop of the Rural and Isolated Practice Course.

A group of Registered Nurses (RNs) from rural and remote areas across Queensland embarked on the nine month Rural and Isolated Practice Course in October 2011. The course is offered through Queensland Health by [The Cunningham Centre](#). It is aimed at RNs who are working in rural or isolated practice areas who want to take that step further to initiate the administration and/or supply of certain medicines, which usually require an order from a doctor or nurse practitioner. Successful completion of the course enables the RN to apply to the Nursing and Midwifery Board of Australia for endorsement as scheduled medicines (rural and isolated practice). Scheduled medicines RNs (rural and isolated practice) in Queensland use the Primary Clinical Care Manual as their clinical guidelines and practice under the authority of a Drug Therapy Protocol.

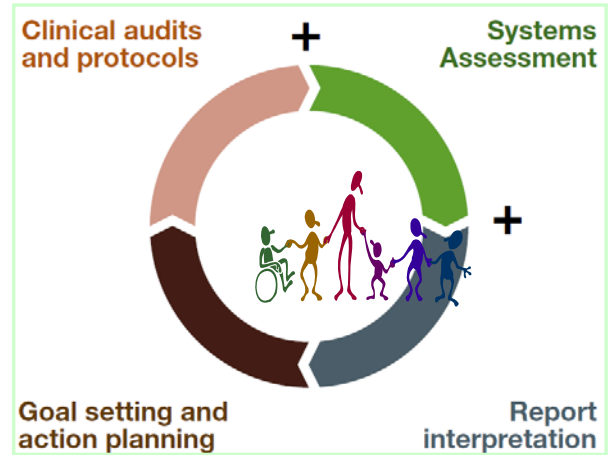
Further information about the Rural and Isolated Practice Course and other courses offered by [The Cunningham Centre](#) can be accessed at:

<http://www.health.qld.gov.au/cunninghamcentre/html/nursing.asp>

Foundation Training (One21seventy)

The Foundation training will increase your understanding of:

- CQI in Primary Health Care
- The One21Seventy cycle and tools
- The benefits of using local health care data to improve the health of the community
- Provide baseline knowledge to allow completion of and participation in the One21Seventy cycle
- discovering and improving the standard of Primary and Community Health Care provided to the community



Who should attend?

Everyone who is interested in improving the health of their Aboriginal and Torres Strait Islander community should attend, including government and non-government staff

Including but not exclusively:

- Medical Officers
- Nursing (including but not exclusive to Child Health, Midwives, Community, Mental Health)
- Allied Health and Therapy assistants
- Mental Health Clinicians
- Aboriginal and Torres Strait Islander Health Workers
- Chronic Disease Team Members

Members of patient safety & quality and district clinical governance team

To register email: primaryhealthcarecqi@health.qld.gov.au

For more information

http://www.health.qld.gov.au/orrh/html/cs_phccqi.asp

Foundation Training Registration Form

Participant Details

Name:	
Position:	
Organisation:	
Address:	
Contact Number:	
Email:	
Please describe your area of work. For example child health, chronic disease etc.	
Comments:	

Training Dates and Proposed Locations

Please note this is a two day course unless otherwise indicated.

(Dates and locations will be confirmed on registration and may change based on numbers registered)

Location:	Date:
Cairns	March 2012
Mt Isa	March 2012
Townsville	April 2012
Torres Strait and NPA	May 2012
Cape York	August 2012
Central West	November 2012
South West	October 2012
West Moreton	September 2012
Brisbane	September 2012
Wide Bay	TBC
Metro North	TBC
Central	TBC
Gold Coast	TBC
Darling Downs	TBC
Other _____	

Participant's Signature: _____ Date: _____

Please send completed form to:
primaryhealthcarecqi@health.qld.gov.au



Diabetes Workshop



for Nurses & Allied Health Professionals

"all in a days work on the wards"
"all in a days work on the wards"

Up-skilling workshop nurses & allied health professionals who care for people with diabetes

MONDAY 27TH OF FEBRUARY 2012

Venue: Cairns Diabetes Centre, Group Room
381 Sheridan St, North Cairns

Contact

Bronwyn Davis on (07) 42264645 or email bronwyn_davis@health.qld.gov.au

Other 2012 dates

- ❖ Tuesday 13th March (Atherton)
- ❖ 14th to 18th May Diabetes Management in the General Care Setting 5 day workshop for RNs
- ❖ Tuesday 10th July (Innisfail)
- ❖ Monday 30th July (Cairns)
- ❖ **8th to 12th October Diabetes Management in the General Care Setting 5 day workshop for Aboriginal and Torres Strait Islander Health Workers and Rural and Remote RNs**
- ❖ Thursday 8th November (Mareeba)
- ❖ Monday 26th November (Cairns)
- ❖ **Diabetes in Pregnancy ½ day workshops** – Mareeba April 12th; Cairns 24th May, 13th September and 22nd November; Atherton 14th August; Innisfail 25th October. Contact Rita Ball or nurse educator in your area to register.