

News Alerts

New Colleagues

Announcements

Research Funding

Conferences & Events

Further Education

Research Spotlight

Feedback & Contributions

View PDF

CHR Homepage

e-Newsletter Archive

CHR Funding Bulletin

Forward CHR e-Newsletter

Contact Us

Editorial

This first issue of the electronic CHR e-Newsletter is one of a number of initiatives that the Princess Alexandra Hospital Centres for Health Research is embarking upon.

This e-Newsletter aims to serve as a platform for the exchange of information within the Princess Alexandra Hospital research community and also provide information to members of the general community and other organisations.

The e-Newsletter will be distributed 3-4 times a year and will be published in electronic format only. Issues will be freely available on our website. As an on-line e-Newsletter should be a dynamic tool meeting the needs and expectations of its readers, we welcome your feedback about the content and presentation of this first issue.

We hope you will support this initiative by helping us in the exchange of information relevant to researchers on the campus and to the general community.

We welcome and strongly encourage contributions for future issues to ensure that it is a valuable reference source for our readers.

Please feel free to draw it to the attention or forward onto your fellow colleagues.



News Alerts

Translational Research Institute: A Partnership

Aiming at new global breakthroughs

The Translational Research Institute (TRI), will be located on the Princess Alexandra Hospital site, and will house and facilitate clinically-focussed research programs.

The translation of research outcomes to clinical trials and practice, in addition to the training of research personnel by developing a stronger research workforce, will enhance our ability to improve the health of humankind. The institute hopes achieve major new breakthroughs in biomedical research, equivalent to the HPV vaccine.

The benefits

The benefits and reach of the translational research that will be undertaken by researchers and clinician researchers at the Institute will have no limits as the outcomes span across local, regional, global boundaries. The Institute will open the gates with:

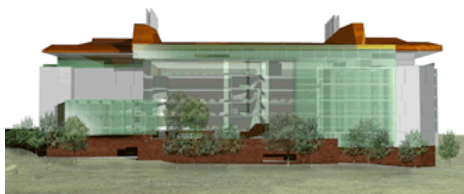
- Improved health research outcomes
- Practical delivery of research outcomes to the clinic, and
- Improved opportunities for education and training.

The research partners & programs

The TRI will bring and strengthen the research programs of the following partners:

1. [The University of Queensland Diamantina Institute for Cancer, Immunology & Metabolic Medicine](#)
2. [Mater Medical Research Institute](#)
3. [The Centres for Health Research and Education, Princess Alexandra Hospital](#)
4. [Queensland University of Technology Institute of Health and Biomedical Innovation](#)

The location of [Biopharmaceuticals Australia](#) at the Princess Alexandra Hospital site in proximity to the TRI will allow for a cluster that will be unique in Brisbane.



Picture of proposed building

Volume 1, Issue 1 | April 2008

Inside this Issue

News Alerts

- Translational Research Institute: A Partnership
- Partnerships for success
- Researchers soar to new academic heights
- ARMS travel scholarship to the 2nd International Network of Research Management Societies (INORMS) congress
- National Health and Medical Research Council (NHMRC) awards for excellence in health and medical research

New Colleagues

- Chair, Human Research Ethics Committee
- Senior Research Fellow, Nursing, cancer services

Announcements

- A new research ethics database for QH Human Research Ethics Committees in 2008
- PAH Centres for Health Research Human Research Ethics website
- Medical research: Queensland's future health and wealth
- Centres for Health Research - annual research review
- Clinical research fellowships

Research Funding

- Funding Bulletin
- PA Foundation grants

Conferences & Events

- PAH Cancer Collaborative Group seminars
- Queensland Health cancer care forum
- PAH Week

Further Education

- Clinical trials design for researchers
- 2008 Clinical research in oncology

The architects

Brisbane firms Wilson Architects and Donovan Hill have recently been **announced** as winners of the architectural design competition. The TRI at the Princess Alexandra Hospital campus will house over 600 researchers. Design concepts for the TRI have been developed. Construction is anticipated to begin in 2009 with occupancy in late 2011.

Current financial support

To date the Institute has secured \$100M from the Queensland Government and \$100M from the Australian Government.

Your opportunity to be involved and make a difference

The Institute needs to secure additional capital funds for this unique Queensland based facility. To achieve the key aims in translating research to better healthcare for our present and future generations the Institute is actively seeking financial support from individuals and organisations. If you are interested in supporting this significant move towards improving the health of humankind locally and globally, contact Ms Areti Gavrilidis on (07) 3240-7665 or via [e-mail](#).



Partnerships for success

Finding answers for cardiovascular disease

Congratulations to Professor Tom Marwick on his recently announced NHMRC success of over \$4.5M. This funding is towards a project *'Integration of Risk Evaluation in Cardiovascular Disease Management Programs'*, which aims to determine the feasibility of a coordinated health care team approach to the treatment of cardiovascular disorders. Professor Marwick's project will examine a range of issues including who would most benefit from this approach, its value for money, the relative importance of health care services to consumers, and where to invest additional health funds. Built on strong collaborations between expert researchers in advanced diagnostic techniques, coordinated health care, community health care and health economics, this provides a unique opportunity to benefit millions of Australians.



Finding answers for geriatric medicine



Congratulations to Professor Len Gray on his recently awarded NHMRC special grant in Dementia. Professor Gray (Academic Unit in Geriatric Medicine, UQ) and co-investigators, Professor Gerard Byrne (Discipline of Psychiatry, UQ) and Dr Nancy Pachana (School of Psychology, UQ), will be investigating issues surrounding acute hospital care of people with dementia. The overarching aim is to characterise the needs of people with dementia to inform better hospital design and treatment. This prospective study of 500 older patients will be conducted in 14 wards in four Brisbane Hospitals. Standard assessments will be performed at admission and discharge, with daily follow-up throughout the admission. Patients with and without dementia

will be included, to enable comparisons of outcomes. The study will examine hospital processes and documentation which relate to problems associated with dementia. A qualitative study involving interview with family members of a sub-sample of patients with and without dementia will enable a carer perspective of the hospital process to be obtained.



Researchers soar to new academic heights

The Centres for Health Research and The University of Queensland's School of Medicine extend their congratulations to the following staff who have recently been awarded Associate Professor Academic Titles:

- Dr David Cook ([Intensive Care](#))
- Dr Devinder Gill ([Haematology](#))
- Dr Paul Gould ([Cardiology](#))
- Dr Julie Jonsson ([Liver Research](#))
- Dr Paula Mariton ([Haematology](#))
- Dr David Mudge ([Nephrology](#))



ARMS travel scholarship to the 2nd International Network of Research Management Societies (INORMS) congress

Areti Gavrilidis (Business Manager, Centres for Health Research) has been awarded a travel scholarship to attend the INORMS Congress in Liverpool (UK) in June 2008. The ARMS International Committee, as part of its strategic plan to further its presence and influence in international research management policy and practice, has recently developed the ARMS/INORMS Travel Scholarships to support ARMS members to attend INORMS events. She will be presenting a poster and visiting a number of UK facilities. Her project aims to identify key enabling strategies to enhance clinical and translational research.



A key element in clinical and translational research is clinician led research in hospitals. Research managers may be interested or already have a role in cultivating an atmosphere and environment, in their individual hospitals, that facilitates and supports clinician research. Areti aims to gain interest and support from colleagues in establishing an international network of hospital based research managers. Areti is strongly committed to making a difference in the area of national and international research management and policy development.

• 2008 Clinical Research in Oncology

- 2008 Intellectual property management in practice conference

[Research Spotlight](#)

- Allied Health Research Collaborative

[Feedback & Contributions](#)

[Contact Us](#)

Areti extends her appreciation to ARMS/INORMS, the Princess Alexandra Hospital and the Princess Alexandra Hospital Cancer Collaborative Group for their support.

National Health and Medical Research Council (NHMRC) awards for excellence in health and medical research

Sixteen outstanding achievers were recognised recently by the NHMRC for their significant contributions to health and medical research. For further information visit the NHMRC [website](#) or download the [awards brochure](#).



New Colleagues

Chair, Human Research Ethics Committee



Welcome to Ms Jennifer Fleming on her recent appointment to the position of Chair, Princess Alexandra Hospital Human Research Ethics Committee. Jennifer who has been on the Committee since 2007 has taken over from Mrs Gwynneth Petrie who retired in December.

Jennifer is a Board member of the Australian New Zealand Institute of Health Law and Ethics. With over 12 years of professional experience in health and clinical research management, research ethics and medical education, she has worked across a number of health disciplines both in the teaching hospitals and as a consultant to researchers in a range of health and medical research institutions and universities groups.

Jennifer has professional involvement with a number of Human Research Ethics Committees and Research Management groups across Australia. She has facilitated a number of research reviews in the hospital, community health and research institute settings.

She has also recently submitted her PhD thesis titled – *'Biobanks: Perspectives of professionals, donors and the public towards tissue banks and the related ethical & legal challenges of consent, linkage & disclosure of research results'*.

Should you wish to discuss particular issues with Jennifer, she can be contacted via [e-mail](#).



Senior Research Fellow, Nursing, cancer services

We welcome Alexandra McCarthy (RN, BN, MN, PhD), to the PAH research community. Alexandra, (who prefers to be called Sandie) is a senior lecturer at Queensland University of Technology's (QUT) School of Nursing. Her PhD investigated 'Sociocultural issues related to breast cancer using discourse analysis'.

A joint appointment between QUT and the Southern Area Cancer Services, Princess Alexandra Hospital as a Senior Research Fellow, commenced in 2008. Her role is to enhance the capacity of cancer nurses in the Southern Area to undertake research which will lead to further increases in cancer nursing research. Sandie's experience in acute and palliative cancer care, including chemotherapy administration, in rural and metropolitan settings will contribute to future research outcomes.

In addition to a passion for the sociological aspects of cancer care and survivorship, Sandie also has an active interest in peritoneal dialysis, particularly how it affects Indigenous Australians.

For further information on Sandie, please visit the [QUT website](#) or via [e-mail](#).



Announcements

A new research ethics database for QH Human Research Ethics Committees in 2008

The Research Ethics and Governance Information System known as AU-RED will be introduced to all the Queensland Human Research Ethics Committees by Queensland Health late in 2008. This system will provide administrative support to the ethics committee administrators and researchers. The licensed software is used in the UK, Canada and Germany and since 2007 introduced by the NSW Department of Health to manage the ethics approval process for multicentre research projects.

This is a complete, web-based solution for a research ethics application processes. The system will aid in providing a streamlined approach to scientific and ethical research review whilst ensuring standardisation of the ethical review administration. AU-RED takes a stepwise approach to managing every part of the project approval. The key outcomes for this system include reduction in the duplication of protocol reviews, increased accountability and transparency in the review and reporting process, decreased delays in project commencement and ongoing management, and improved turnaround in submission reviews.

AU-RED is one of a number of initiatives that will be implemented in research ethics and research governance in the next 18 months. These initiatives will align Queensland Health processes with the new National Statement on the Ethical Conduct of Research in Humans, the Australian Code of Responsible Conduct of Research and the NHMRC program of Harmonisation of Multicentre Ethical Review (HOMER). For further details please contact the PAH Centres for Health Research on 3240 7663 or the QH Research and Ethics Advisory Unit on 32340034.



PAH Centres for Health Research Human Research Ethics website

The Human Research Ethics area of the Centres for Health Research (CHR) website has undergone some updates to incorporate links to various NHMRC documents such as the National Statement on Ethical Conduct in Human Research 2007, Australian Code for the Responsible Conduct of Research and When does Quality Assurance in Health Care Require Independent Ethical Review? The [forms page](#) has also been altered to be more user friendly for new submissions, modifications and serious adverse event reporting. To avoid unnecessary delays, please ensure you utilise the latest versions of forms when making a submission to the HREC.

The CHR office is always keen to receive your feedback as to how our products and services available

online can be improved, so feel free to [e-mail](#) us.



Medical research: Queensland's future health and wealth

A Smart State Council Working Group report on *Medical Research: Queensland's Future Health and Wealth. SOLVING TOMORROW'S HEALTH PROBLEMS TODAY* was recently released.

The report addresses two major objectives:

- delivering better health services to Queenslanders'
- contributing to the growth of Queensland's biotechnology, pharmaceutical and health services industries.

It proposes solutions including:

- increasing the quality and quantity of health services delivery and economic outcomes through focuses investment in critical mass
- linking health and medical research organisations through an extension of the ideas developed in the Smart Cities report
- redefining the culture of Queensland Health and medical R&D through the creation of a strong quasi governance model.

The Smart State Council Working Group was chaired by Professor Derek Hart. Members of the Working group included: Professor Michael Ward, Professor Paul Greenfield, Mr Peter Wills, Dr John Mulcahy. Ms Areti Gavrilidis was the Principal Researcher.

To view the report and for further information, visit the Government's [Smart State website](#).



PAH Centres for Health Research - annual research review

Thank you to all the departments and groups for their 2007 submissions. The research review will be published and circulated in June 2008. Previous editions of the annual research review are available [online](#).

Princess Alexandra Hospital Clinical research fellowships

This is the 10th Year since the Princess Alexandra Hospital Clinical Research Fellowship scheme was introduced. The scheme supports three clinical research awards annually. The aim of the scheme is to allow registrars in clinical training programs to undertake a year of supervised clinical research at the Princess Alexandra Hospital.

Twenty-eight clinical research fellowships have been awarded since the scheme was first introduced in 1999. Of the 28 clinicians supported to date, 21 have undertaken formal research training with higher degree enrolment.



The 2008 Dr Malcolm Turner and Dr Carolyn Clark applications were successful.

Dr Turner, a Rheumatology research fellow, works closely with Professors Ranjeny Thomas and Tom Marwick on the assessment and modification of cardiovascular disease in early rheumatoid arthritis. He also works with Professor Thomas in the area of dendritic cell vaccines in early rheumatoid arthritis.

Dr Clark, a Nephrology registrar, is investigating ischaemia reperfusion injury in rat kidneys, with a focus on the potential healing role of mesenchymal

stem cells in this model.



Research funding

Funding Bulletin

The Funding Bulletin publication re-launched in this new format has been developed by the Centres for Health Research, as a collaborative information service from a range of funding agencies. The publication is e-mailed on a weekly basis.

If there are funding opportunities or organisational sources you wish to have included in the CHR funding bulletin please contact us via [e-mail](#).

For further information and previous editions, please visit the Centres for Health Research [website](#).

PA Foundation grants

Congratulations to the successful recipients of the PA Foundation's grant round for projects commencing in 2008. Details are as follows:

- Project Funding
 - [Centre of Clinical Research Excellence in Cardiovascular Disease and Metabolic Disorders](#) (Professor Tom Marwick) - \$30,000
 - [Therapeutics Research Unit](#) (Professor Michael Roberts) - \$30,000
 - [Diamantina Institute, Metabolic Research Unit](#) (Professor John Prins) - \$30,000
 - [Cancer Collaborative Group](#) - \$100,000
 - [Diamantina Institute, Cancer Research Unit](#) (Professor Tom Gonda) - \$100,000
 - [Respiratory Medicine](#) - PAH / UQ (Professor John Upham) - \$50,000
- Research Grants – awarded \$50,000 (five projects)
- Training Grants – awarded \$80,000 (four projects)
- New Appointment Grants – awarded \$200,000 (four projects)
- PA Foundation Scholarships – awarded \$12,500 (four projects)
- Medical / Scientist Travel Scholarship – awarded \$10,000 (two projects)
- Private Practice Grants – awarded \$350,000 (seven projects)

For further information please visit the PA Foundation [website](#).



Conferences & Events

PAH Cancer Collaborative Group seminars

The PAH Cancer Collaborative Group (CCG) bi-monthly research and education seminars are open to researchers within and outside the PAH campus. All interested are welcome. The seminars are held at the Jian Zhou Forum, Level 5, R-Wing, PAH at 5pm for 5.30pm. For further information and RSVP's contact Jan Singleton on ext. 2115 or via [e-mail](#).

Upcoming seminars

Wednesday 23rd April 2008 - 'Breast Cancer' presented by Dr Terrence Haines

Wednesday 18th June 2008 - 'Colorectal / Gastro Interstinal / Prostate Cancer'

The PAH CCG extends its appreciation to the generous support of its sponsors. If you wish to present at the seminars, please contact Jan Singleton. For further dates and information, please visit the [website](#).

Queensland Health cancer care forum

The state-wide Cancer Clinical Leadership Group is hosting its second 'Advancing Key Initiatives in Cancer Care' forum on 14 – 15th May 2008 to be held at the Brisbane Convention and Exhibition Centre.

This is a forum for Queensland Health Professionals who provide regular care to cancer patients, or work in an oncology service planning/management role. The two day program will cover a broad range of issues across the cancer care spectrum which will encompass and engage medical, nursing and allied health disciplines. The forum is only open to Queensland Health staff and is free to attend. Some staff will also be eligible to have their travel and/or accommodation expenses covered.

For further information, please visit the [forum website](#), [e-mail](#) the Cancer Control Team or call (07) 3239 0856.

PAH Week

- Transplantation Theme
- 4 – 8th August 2008, Russell Strong Auditorium, Lower Level, Building 1, Princess Alexandra Hospital
- PAH Ball, The Gabba, Saturday 9th August 2008
- Further information and membership – contact Desley Thompson on ext. 7029 or via [e-mail](#).



Further Education

Clinical trials design for researchers

- 21 - 22nd April 2008
- The Wesley Research Institute, Brisbane
- Further information - visit the QCTN [website](#).

2008 Clinical research in oncology

- 5 - 9th May 2008
- Graduate House, 220 Leicester Street, Carlton, Victoria
- Further information - visit the [website](#).

2008 Intellectual property management in practice conference

- 19th – 21st May 2008
- The Grace Hotel, Sydney
- Further information - download the [program](#) or contact (02) 9224 6000.



Research spotlight

Allied Health Research Collaborative

Allied health researchers at the Princess Alexandra Hospital (PAH) are a dynamic proactive group of professionals. An Allied Health Research Committee formed in the late nineties, has led to the strategic development of research activity and the appointment of conjoint PAH/University and research development positions. Research productivity has increased significantly over the last decade and culminated in the formation of the Allied Health Research Collaborative (AHRC) in 2007. This group includes health professionals providing diagnostic, rehabilitative and clinical support to the hospital and community through specialised services, in addition to generating



research within medical and social disability models. Key aims of the collaborative are to foster research relationships spanning all levels (district to international), generate multi-disciplinary research and encourage collaborations with nursing and medical colleagues and universities. The AHRC continues to invite other health professionals to develop links with them to broaden the spectrum of outcomes.

To date, the AHRC has achieved in excess of three million dollars of funding, awarded particularly in the areas of falls prevention, exercise therapy, clinical education, brain injury rehabilitation, oncology and nutrition. There are more than 16 full-time and part-time allied health higher degree students contributing to the success of the AHRC. In 2007, there were 16 publications in refereed journals and book chapters, as well as 20 conference presentations at national and international levels reported by the group.

Special events for 2007 included the celebration of five years of University of Queensland and PAH partnership in the form of allied health conjoint research fellows in Speech Pathology, Physiotherapy, Occupational Therapy and Audiology, the 'School of Health and Rehabilitation Sciences' University of Queensland Postgraduate Research Conference hosted at the PAH with more than 30 speakers and 120 attendees, and an exceptionally well attended allied health PAH Week session addressing the 'future of

allied health'.

In 2008, the AHRC will continue to produce nationally and internationally recognised high quality research and contribute significantly to evidence based practice.

If you are interested in developing links with the AHRC or would like some more information regarding AHRC's achievements refer to the 2007 PAH Centres for Health Research Review or [e-mail](#) Dr Jenny Lethlean.



Feedback & Contributions

If you would like to include any information in the next edition or provide feedback, please [e-mail](#) the Centres for Health Research office.



Contact Us - Centres for Health Research

P: (07) 3240 7663 | F: (07) 3240 7667

Location: Level 1, Building 35, Princess Alexandra Hospital, Ipswich Road, Woolloongabba QLD 4102

E: PAH-Research@health.qld.gov.au W: <http://www.health.qld.gov.au/pahospital/research/default.asp>

The Centres for Health Research e-Newsletter is a free information service for the PAH Research Community and is produced by the Centres for Health Research, Princess Alexandra Hospital.

