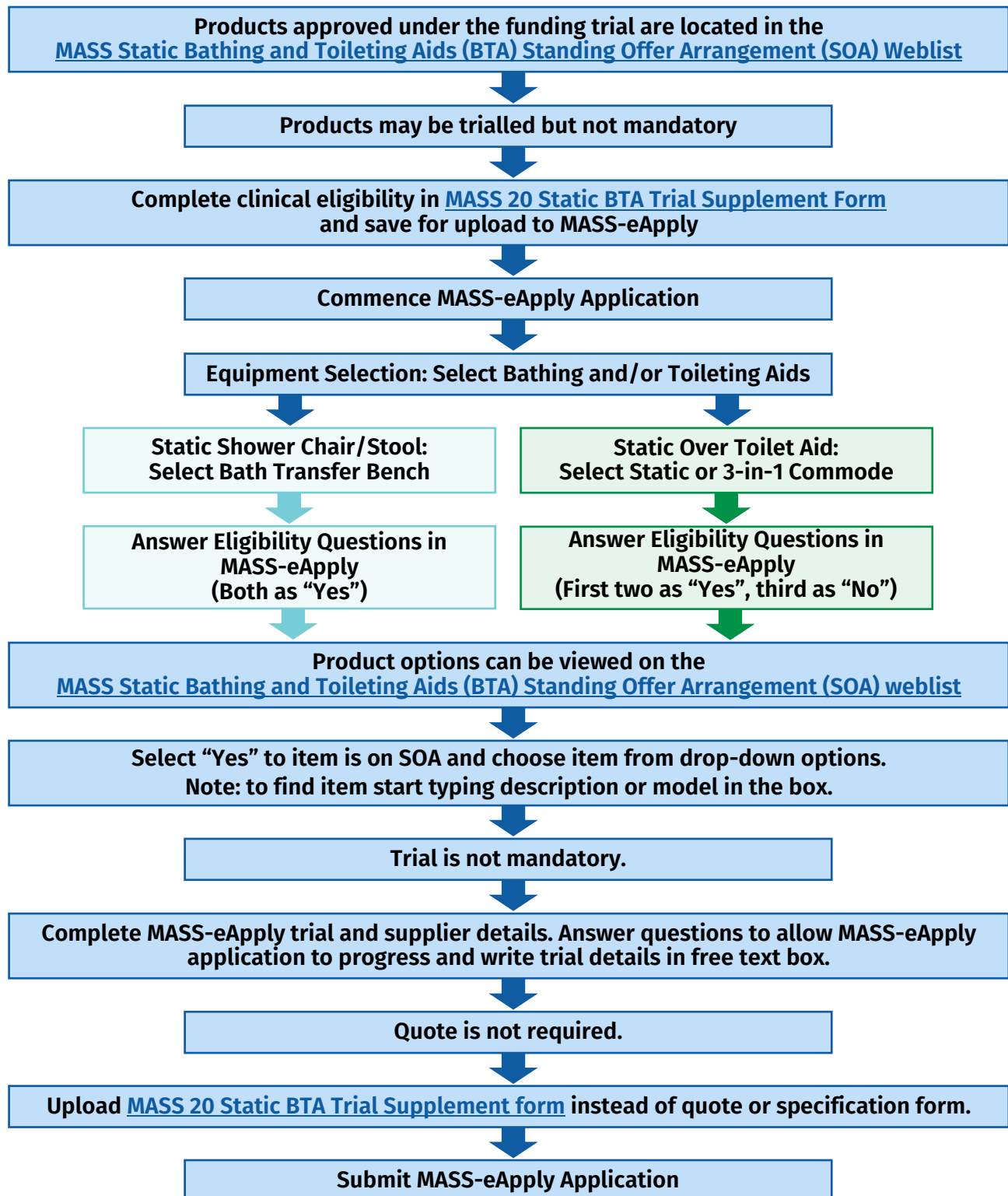


# Application Process Flowchart

## Medical Aids Subsidy Scheme (MASS) Static Shower Chair/Stool and Over Toilet Aid Trial



## Weblinks to documents mentioned:

1. MASS 20 Static Bathing and Toileting Aid (BTA) Trial Supplement Form:  
[https://www.health.qld.gov.au/\\_data/assets/pdf\\_file/0017/1204217/form-mass-20-static-bta.pdf](https://www.health.qld.gov.au/_data/assets/pdf_file/0017/1204217/form-mass-20-static-bta.pdf)
2. Static Shower Chair/Stool and Static Over Toilet Aid Trial Application Process:  
[https://www.health.qld.gov.au/\\_data/assets/pdf\\_file/0014/1204223/ES-Static-BTA-App-Process.pdf](https://www.health.qld.gov.au/_data/assets/pdf_file/0014/1204223/ES-Static-BTA-App-Process.pdf)
3. Static Shower Chair/Stool and Static Over Toilet Aid Trial Guideline Supplement:  
[https://www.health.qld.gov.au/\\_data/assets/pdf\\_file/0012/1204221/ES-Static-BTA-Guideline.pdf](https://www.health.qld.gov.au/_data/assets/pdf_file/0012/1204221/ES-Static-BTA-Guideline.pdf)
4. Standing Offer Arrangement (SOA) Weblist – Available:  
<https://www.health.qld.gov.au/mass/prescribe/living/products-suppliers>



© State of Queensland (Queensland Health) 2023  
[creativecommons.org/licenses/by/3.0/au](https://creativecommons.org/licenses/by/3.0/au)

### **For more information contact:**

Medical Aids Subsidy Scheme  
Metro South Health  
PO Box 281  
Cannon Hill QLD 4170 Australia  
tel (07) 3136 3524  
[MASS-Equipment@health.qld.gov.au](mailto:MASS-Equipment@health.qld.gov.au)  
[health.qld.gov.au/mass](https://health.qld.gov.au/mass)