

Appendices

Best possible medication history (BPMH)¹⁻⁴

- Get an accurate and complete list (or as close as possible) of medicines the patient is currently taking at presentation or as early as possible in care
- Online course **Get it right! Taking a best possible medication history** <https://learn.nps.org.au/>

Step 1

Review sources of available medicines information eg:

- Medication containers, blister packs
- Community pharmacist list, GP referral letters
- Medical record(s), *My Health Record* <https://www.myhealthrecord.gov.au/>

Step 2

Interview the patient ± carer/family if possible

- Names of all medicines patient is taking
- Prescription, over-the-counter, complementary - dose, strength, form, concentration, frequency, duration and why taking:
 - use **Medication history checklist** (below) to guide interview
- Any difficulty taking medicines, how often missed
- Recent change to medicine(s) or doses
- Allergies/bad reaction to any medicines in past, what/when/has it happened since

Step 3

Verify the history with one or more sources of information

- Check that these match up/any inconsistencies
- Where there are discrepancies, ask patient ± advise the MO/NP
- Check a medication reference if unsure about a medicine

Step 4

Record the information on the medical record

- On the designated form or in the electronic medical record
- Document allergies + any recent change(s) to medicines and why
- Give list of medicines when care transferred eg retrieval team, to patient/carer when discharged, at clinical handover

Medication history checklist⁴

<input type="checkbox"/> Prescription medicines	<input type="checkbox"/> Topical medicines eg creams, ointments, lotions, patches
<input type="checkbox"/> Sleeping tablets	<input type="checkbox"/> Complementary medicines eg vitamins, herbal or natural therapies
<input type="checkbox"/> Inhalers, puffers, sprays, sublingual tablets	<input type="checkbox"/> Inserted medicines eg nose, ear, eyes, pessaries, suppositories
<input type="checkbox"/> Oral contraceptives, hormone replacement therapy	<input type="checkbox"/> Injected medicines
<input type="checkbox"/> Over-the-counter medicines	<input type="checkbox"/> Recently completed courses of medicines
<input type="checkbox"/> Anticoagulants/antiplatelets	<input type="checkbox"/> Other people's medicines
<input type="checkbox"/> Analgesics	<input type="checkbox"/> Social and recreational drugs
<input type="checkbox"/> Gastrointestinal medicines (for reflux, heartburn, constipation, diarrhoea)	<input type="checkbox"/> Intermittent medicines eg weekly or twice weekly
	<input type="checkbox"/> Refrigerated medicines

High risk medicines - Anti-infectives, Potassium and other electrolytes, Insulin, Narcotics and other sedatives, Chemotherapeutic agents, Heparin, enoxaparin, warfarin and other anticoagulants

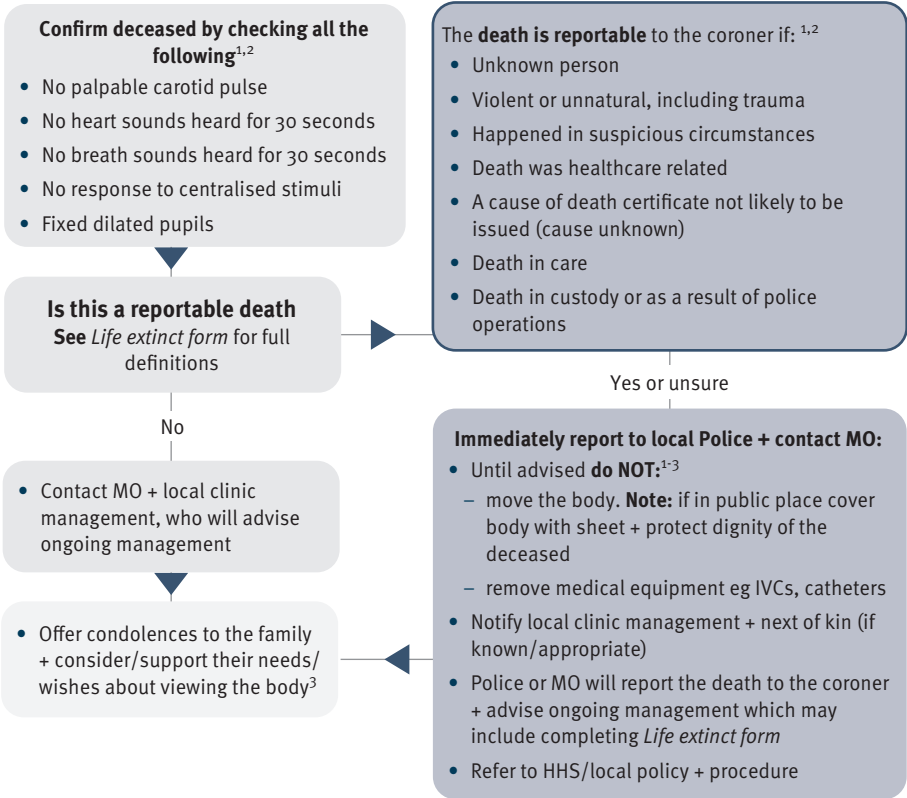
Patient death in absence of medical officer

Recommend

- Follow HHS/local policy + procedures. If outside of Qld refer to local policy + procedures
- Death in community can be very emotional + distressing. Be guided by local health workers + clinic management
- If neonatal death or stillbirth - MO will advise. Also see Qld Clinical Guideline *Stillbirth care* <https://www.health.qld.gov.au/qcg/publications#maternity>

Background

- *Life extinct form* (Qld Health intranet only) https://qheps.health.qld.gov.au/__data/assets/pdf_file/0034/2446477/mr41.pdf
- Also see *Information for health professionals* (Qld) https://www.courts.qld.gov.au/__data/assets/pdf_file/0006/92868/m-osc-fs-information-for-health-professionals.pdf



Glasgow Coma Scale/AVPU

A	Alert
V	Responds to voice
P	Responds to painful stimuli
U	Unresponsive

Glasgow Coma Scale (GCS) ^{1,2}				
Eyes open	Spontaneous	4		
	To speech	3		
	To pain	2		
	No response (C= eyes closed)	1		
		Child/infant	Non verbal person (child/infant/adult)	
Best verbal response	Orientated	5	Alert, babbles, coos, words to usual ability	Spontaneous normal facial/oro-motor activity
	Confused	4	Less than usual words, spontaneous irritable cry	Less than usual ability/response to touch only
	Inappropriate words	3	Cries only to pain	Vigorous grimace to pain
	Incomprehensible sounds	2	Moans to pain	Mild grimace to pain
	No response (T=tracheostomy)	1	No response to pain	No response to pain
		Child/infant/non verbal person		
Best motor response	Obeys commands	6	Spontaneous or obeys verbal commands	
	Localises to pain	5		
	Withdraws from pain	4		
	Flexion to pain (decorticate)	3		
	Extension to pain (decerebrate)	2		
	No response	1		
GCS total/15				

- Always act on: score < 15 or drop of ≥ 2
- If < 8 requires secured airway. Consider [LMA](#), p. 56 until patient can be intubated

Injection pain

HMP Managing injection pain

Non-pharmacological strategies¹

- Patients of all ages should have control over how and where they receive their injection
- Short wait time for injection
- Pain blocking techniques - applied to site prior to injection eg:
 - ice pack for 5 minutes
 - firm pressure for 10 seconds
 - ice and vibration:
 - Buzzy® - ice pack for 5 minutes then Buzzy® for 60 seconds and move Buzzy® directly above the site of insertion during injection
 - CoolSense® - use Buzzy® for 60 seconds first, then Coolsense® for 10 seconds, then Buzzy® as above
 - other device eg Shot Blocker® - piece of plastic shaped to fit around the injection site and press the skin with multiple, small, blunt bumps to 'saturate sensory nerves'
- Distraction techniques eg electronic games, videos
- Refrigerate needle prior to injection
- Allow the syringe to reach room temperature before use
- Injecting slowly eg over 2–3 minutes - be guided by the patient

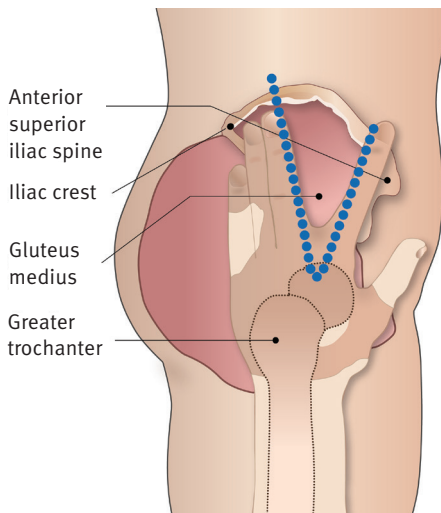
Pharmacological strategies¹

- Paracetamol before injection and at appropriate intervals after. See [Acute pain, p. 32](#)
- Anaesthetic spray/cream before injection eg Emla®. **Note:** only anaesthetises skin, not lower layers
- Nitrous oxide + oxygen (Entonox®) during injection. See [Acute pain, p. 32](#)
- If highly distressed consider consulting MO/NP/RHD (Qld) ☎ 1300 135 854 or state/territory RHD control program for other options
- **Note:** *The Australian ARF/RHD guideline* provides guidance for lidocaine (lignocaine) injected with Bicillin LA® as an option. This is not currently supported in Qld²

S2	Lidocaine (lignocaine) + prilocaine Emla®			Extended authority ATSIHP/IHW
ATSIHP, IHW, MID, RIPRN and RN may proceed				
Form	Strength	Route	Dose	Duration
Cream	Lidocaine 2.5%/Prilocaine 2.5%	Topical	Adult and child > 6 months Squeeze about 3.5 cm from tube onto intact skin and cover with an occlusive dressing OR apply 1 patch	Leave on skin for 1 hour Remove prior to injection
Patch				
Offer CMI: Effect lasts for 30 minutes to 2 hours after removal. May cause temporary blanching and swelling of the skin				
Contraindication: Methaemoglobinaemia. Use with caution if taking medicines that may cause methaemoglobinaemia eg sulfonamides, nitrates				
Management of associated emergency: Consult MO/NP. See Anaphylaxis, p. 82				3

Ventrogluteal injection

Injection site



Technique¹

- Place patient in a side-lying position
- Use your right hand on the patient's left hip; or left hand on the patient's right hip:
 - with the palm of your hand, locate the greater trochanter of the femur
 - place your index finger towards the front or anterior superior iliac spine + fan the middle finger as far along the iliac crest as you can reach. The thumb should be pointed towards the front of the leg
- The injection site is in the middle of the triangle between the middle and index fingers
- Remove your fingers prior to inserting the needle
- See video - *Ventrogluteal injection technique*
https://www.youtube.com/watch?v=BIO_hojT5jk&feature=youtu.be

Abbreviations and acronyms

AAA	Abdominal aortic aneurysm
ABCD	Airway Breathing CPR Defibrillation
ACAT	Aged Care Assessment Team
ACE	Angiotensin converting enzyme
ACEI	Angiotensin converting enzyme inhibitors
ACR	Albumin/creatinine ratio
ACS	Acute coronary syndrome
ACWY	Four meningococcal serotypes
AdjBW	Adjusted body weight
ADT	Adult diphtheria and tetanus
AED	Automated external defibrillator
AEFI	Adverse event following immunisation
AF	Atrial Fibrillation
AFB	Acid-fast bacilli
AIH	Australian Immunisation Handbook
AIR	Australian Immunisation Register
ALS	Advanced Life Support
Anti-HBc	Anti-hepatitis B core total antibodies
Anti-HBs	Anti-hepatitis B surface antibody
AOM	Acute otitis media
AMH	Australian Medicines Handbook
AMS	Antimicrobial stewardship
APH	Antepartum haemorrhage
APO	Acute pulmonary oedema
Approx.	Approximately
APSGN	Acute post streptococcal glomerulonephritis
APTT	Activated partial thromboplastin time
ARB	Angiotensin-receptor blocker
ARF	Acute rheumatic fever
ART	Antiretroviral therapy
ASB	Asymptomatic bacteriuria
ASBD	Acute severe behavioural disturbance
ASCIA	Australian Society of Clinical Immunology and Allergy
ASHM	Australasian Society for HIV, Viral Hepatitis and Sexual Health Medicine
ASOT	Anti streptolysin O antibodies

ATSIHP	Aboriginal and Torres Strait Islander Health Practitioner
A&TSIHP	
AVPU	A lert, V oice, P ain, U nresponsive
β-hCG	Beta human chorionic gonadotropin
bd	Twice a day
BBV	Blood borne virus
BCG	Bacille Calmette Guerin
BF	Breastfeeding
BFV	Barmah Forest virus
BGL	Blood glucose level
BiPAP	Bi-level positive airway pressure
BLS	Basic Life Support
BMI	Body mass index
BP	Blood pressure
BPMH	Best possible medication history
BV	Bacterial vaginosis
C ₃	Complement component 3
C ₄	Complement component 4
CATAG	Council of Australian Therapeutic Advisory Group
CATCH	Children's Advice & Transport Coordination Hub
CCG	Clinical Care Guideline
CCM	Chronic Conditions Manual
CCT	Controlled cord traction
<i>C. difficile</i>	<i>Clostridium difficile</i>
CDNA	Communicable Diseases Network Australia
CEWT	Children's Early Warning Tool
CHEM8+	i-STAT cartridge (chemistries/ electrolytes, haematocrit, Hb)
CHEM20	Biochemistry profile
CF	Counting fingers
CGM	Continuous glucose monitoring
CHD	Chronic heart disease
CK	Creatine kinase
CKD	Chronic kidney disease
cm	Centimetre(s)
CMI	Consumer medicine information
CMP	Calcium-magnesium-phosphate
CMV	Cytomegalovirus
CNS	Central nervous system
CO ₂	Carbon dioxide
COCP	Combined oral contraceptive pill

COPD	Chronic obstructive pulmonary disease	EWARS	Early Warning and Response System
CPAP	Continuous positive airway pressure	FAST	Facial weakness, Arm \pm weakness, Speech difficulty, Time to act fast
CPLO	Child Protection Liaison Officer	FB	Foreign body
CPR	Cardiopulmonary resuscitation	FBC	Full blood count
CREDD	Children's Resuscitation Emergency Drug Dosage	FCU	First catch urine
CRP	C-reactive protein	ffn	Fetal fibronectin
CRT	Capillary refill time	FHR	Fetal heart rate
CSF	Cerebrospinal fluid	FLACC	Face, Legs, Activity, Cry, Consolability scale
CSOM	Chronic suppurative otitis media	FMH	Fetomaternal haemorrhage
CST	Cervical screening test	FTA	Fluorescent treponemal antibody
CT	Computed tomography	G	Gauge eg 14 gauge
CTG	Cardiotocography	g	Gram
CTPA	CT pulmonary angiogram	Group A Strep (GAS)	Group A <i>Streptococcus</i>
DASS	Depression anxiety stress scales	Group B Strep (GBS)	Group B <i>Streptococcus</i>
dBp	Diastolic blood pressure	GCS	Glasgow Coma Scale
DCI	Decompression illness	GDM	Gestational diabetes mellitus
DEET	Diethyl toluamide	GFR	Glomerular filtration rate
DFV	Domestic and family violence	GHB	Gamma hydroxybutyrate
DKA	Diabetic ketoacidosis	GI	Gastrointestinal
DM	Diabetes mellitus	GIT	Gastrointestinal tract
DMPA	Depot medroxyprogesterone acetate	GORD	Gastro-oesophageal reflux disease
DNA	Deoxyribonucleic acid	GP	General practitioner
dT	Diphtheria-tetanus	GTN	Glyceryl trinitrate
DTPa	Diphtheria-tetanus-acellular pertussis	GXP	GeneXpert machine
dTpa		H ₂ O	Water
DVT	Deep vein thrombosis	Hb	Haemoglobin
ECG	Electrocardiogram	HbA _{1c}	Glycated haemoglobin
Echo	Echocardiogram	HBIG	Hepatitis B immunoglobulin
<i>E. coli</i>	Escherichia coli	HBsAg	Hepatitis B surface antigen
EDD	Estimated date of delivery	HCV	Hepatitis C virus
EDO	Epididymo-orchitis	HCV Ab	Hepatitis C virus antibody
EEA	Emergency examination authority	hep A	hepatitis A
eFAST	Extended focused assessment with sonography in trauma	hep B	hepatitis B
eg	for example	hep C	hepatitis C
EIA	Enzyme-linked immunosorbent assay	HELLP	Haemolysis, Elevated Liver enzymes and Low Platelet count (a variant of severe preeclampsia)
ENT	Ears, nose and throat	HFNC	High flow nasal cannula
EPA	Extended practice authority	HHS	Hyperosmolar hyperglycaemic state
EPDS	Edinburgh Postnatal Depression Scale	Hib	<i>Haemophilus influenzae</i> type B
ESR	Erythrocyte sedimentation rate	HIV	Human immunodeficiency virus
etc	Etcetera	HMP	Health management protocol
eTG	Electronic Therapeutic Guidelines		

HPV	Human papilloma virus
HR	Heart rate - beats/minute
HRF	Hypercapnic respiratory failure
HRT	Hormone replacement therapy
HSV	Herpes simplex virus
HVS	High vaginal swab
IBW	Ideal body weight
ICP	Intracranial pressure
ICU	Intensive care unit
ID	Infectious disease
ID	Identification
I&D	Incision and drainage
IDC	Indwelling catheter
ie	That is
IG	Immunoglobulin
IgG	Immunoglobulin G
IgM	Immunoglobulin M
IHW	Authorised Indigenous Health Worker
IM	Intramuscular
INR	International Normalised Ratio
IOP	Intraocular pressure
IPAP	Isolated Practice Area Paramedic
IPN	Immunisation Program Registered Nurse
i-STAT	Point of care analyser
IUD	Intrauterine device
IUGR	Intrauterine growth restriction
IV	Intravenous
IVC	Intravenous cannula
IVP	Intravenous pyelogram
JIC	Just in case forensic examination
JVP	Jugular venous pressure
kg	Kilogram(s)
kph	Kilometres per hour
L	Litre(s)
LAM	List of Approved Medicines (Qld)
LBBB	Left bundle branch block
LDH	Lactate dehydrogenase
LFT	Liver function test
LGV	Lymphogranuloma venereum
LMA	Laryngeal mask airway
LMP	Last menstrual period
LNMP	Last normal menstrual period
LOC	Level of consciousness
LSD	Lysergic acid diethylamide
LVS	Lower vaginal swab

m	Metre
MAD	Mucosal atomisation device
Mane	Morning
MAO	Monoamine oxidase
MAOI	Monoamine oxidase inhibitor
max.	Maximum
MCS	Microscopy, culture, sensitivity
MDI	Metered dose inhaler
MDMA	Methylenedioxyamphetamine
MEWT	Maternity Early Warning Tool
mg	Milligram(s)
MHAODS	Mental Health, Alcohol and Other Drugs
microg	Microgram(s)
MID	Midwife
MI	Myocardial infarction
mL	Millilitre(s)
mm	Millimetre(s)
mmHg/kPa	Millimetre of mercury/kilopascal
mmol	Millimole(s)
MMR	Measles, mumps, rubella
MO	Medical officer
MRI	Magnetic resonance imaging
MRSA	Methicillin-resistant <i>staphylococcus aureus</i>
msec	Millisecond
MSE	Mental state examination
MSM	Men who have sex with men
MSU	Midstream urine sample
Mths	Months
MToP	Medical termination of pregnancy
NAD	No abnormalities detected
NEB	Nebulised, nebule
NEWT	Neonate Early Warning Tool
NEXUS	National Emergency X-Radiography Utilisation Study
NG	Nasogastric
ng/mL	nanograms/mL
NGT	Nasogastric tube
NIPs	National Immunisation Program schedule
NIPT	Non-invasive pre-natal screening test
nmol	nanomoles/mL
nocte	At night
NP	Nurse practitioner

NSAID	Non-steroidal anti-inflammatory drug	PVD	Peripheral vascular disease
NSTEACS	Non-ST elevation acute coronary syndrome	Q-ADDS	Queensland Adult Deterioration Detection System
NSTEMI	Non-ST elevation myocardial infarction	QAS	Queensland Ambulance Service
NSW	New South Wales	qid	Four times a day
NS1	Nonstructural protein 1	Qld	Queensland
NT	Northern Territory	QCG	Queensland Clinical Guidelines
O ₂	Oxygen	Q-MEWT	Queensland Maternity Early Warning Tool
OGT	Orogastric tube	QSSS	Qld Syphilis Surveillance Service
OGTT	Oral glucose tolerance test	RA	Recommendation for assessment
OM	Otitis media	RBC	Red blood cells
OME	Otitis media with effusion	RBWH	Royal Brisbane Women's Hospital
ORS	Oral rehydration solution	RFDS	Royal Flying Doctor Service
p.	Page	RHD	Rheumatic heart disease
P2/N95	Standards applying to particulate filtering personal masks	Rh D	Rhesus factor (blood group)
Papp-A	Pregnancy associated placental protein-A	RIPRN	Rural and Isolated Practice Registered Nurse
PBS	Pharmaceutical Benefits Scheme	RN	Registered Nurse
PCCM	Primary Clinical Care Manual	RNA	Ribonucleic acid
PCI	Percutaneous coronary intervention	ROA	Right occiput anterior
PCR	Polymerase chain reaction OR Protein/creatinine ratio	ROM	Range of motion
PE	Pulmonary embolism	ROM	Rupture of membrane
PEA	Pulseless electrical activity	ROSC	Return of spontaneous circulation
PEP	Post-exposure prophylaxis	RPR	Rapid plasma reagin test
PHR	Pregnancy health record	RR	Respiratory rate - breaths/minute
PIC	Poisons Information Centre	RRV	Ross River virus
PICC	Peripherally inserted central catheter	RSQ	Retrieval Services Queensland
PID	Pelvic inflammatory disease	S ₂	Schedule 2
PNG	Papua New Guinea	S ₃	Schedule 3
POC	Products of conception	S ₄	Schedule 4
PoCT	Point of care testing	S ₈	Schedule 8
POP	Progestogen only pill	SA	South Australia
PPE	Personal protective equipment	SAIK	Sexual assault investigation kit
PPH	Postpartum haemorrhage	sBP	Systolic blood pressure
PPV	Positive pressure ventilation	SES	State emergency service
PQ	Pathology Queensland	SGLT ₂	sodium-glucose co-transporter 2
PR	Per rectum	SIDS	Sudden infant death syndrome
PrEP	Pre-exposure prophylaxis	SLE	Systemic lupus erythematosus
PROM	Prelabour rupture of membranes	SMO	Senior Medical Officer
prn	As needed	SNRI	Serotonin and norepinephrine reuptake inhibitors
PTH	Parathyroid hormone	SOB	Shortness of breath
PV	Per vagina	SpO ₂	Peripheral oxygen saturation
		SRH	Sexual or reproductive health registered nurse

SSRI	Selective serotonin reuptake inhibitors
Staph	<i>Staphylococcus</i>
stat	Immediately and once only
STEMI	ST-elevation myocardial infarction
STI	Sexually transmitted infection
SToP	Surgical termination of pregnancy
Strep	<i>Streptococcus</i>
Subcut	Subcutaneous
Subling	Sublingual
T	Temperature in degrees celsius
TB	Tuberculosis
TBSA	Total body surface area
TCA	Tricyclic antidepressant
TDM	Therapeutic drug monitoring
tds	Three times a day
TED	Thoracic elevation device
TEMSU	Telehealth Emergency Management Support Unit
TFT	Thyroid function test
TGA	Therapeutic Goods Administration
TIA	Transient ischaemic attack
TIG	Tetanus immunoglobulin
TM	Tympanic membrane
ToP	Termination of pregnancy
<i>T. pallidum</i>	<i>Treponema pallidum</i>
TPHA	Treponema pallidum haemagglutination assay
TPPA	Treponema pallidum particle agglutination assay
TSH	Thyroid stimulating hormone
UC	Urea and creatinine
UE	Urea and electrolytes
UEC	Urea, electrolytes and creatinine
UEG	Urea, electrolytes and glucose
UPA	Ulipristal acetate
URTI	Upper respiratory tract infection
USB	Universal Serial Bus
USS	Ultrasound scan
UTI	Urinary tract infection
UV	Ultraviolet
V	Volt
VA	Visual acuity
VBG	Venous blood gas
VE	Vaginal examination
VF	Ventricular fibrillation
VQ	Ventilation perfusion (scan)

VT	Ventricular tachycardia
VTE	Venous thromboembolism
VZV	Varicella-zoster virus
WA	Western Australia
WCC	White cell count
WOB	Work of breathing
Symbols	
↗	Increasing/increased
↘	Decreasing/decreased
>	Greater than
<	Less than
≤	Less than or equal to
≥	Greater than or equal to
-ve	Negative
+ve	Positive
±	Plus or minus
+	Plus
=	Equal to
®	Registered trade mark
☎	Phone number OR notifiable
%	Percent
°	Degrees
~	About/approximately

Index

A

- Abbreviations.....565
- Abdominal examination 197
- Abdominal injuries..... 150
- Blunt*..... 150
 - Penetrating* 151
 - Pregnant woman with* 151
- Abdominal pain.....196
- Assessment*..... 196
 - Causes* 199
 - Child* 493
 - In female* 462
- Abscess
- Boils*..... 302
 - Breast* 431
 - Incision and drainage* 303
 - Tooth*..... 267
- Abuse/neglect, See Child protection 551
- Acetylcysteine 220
- Acid, burns.....182
- Activated charcoal..... 213
- Acute
- Abdominal pain* 196
 - Asthma* 95
 - Bacterial sinusitis*..... 252
 - Behavioural disturbance* 336
 - Glaucoma* 280
 - Hypertensive emergency*.....116
 - Iritis* 280
 - Lower leg ischaemia*..... 123
 - Mastoiditis* 521
 - Otitis media* 523
 - Pain* 32
 - Post streptococcal glomerulonephritis*..... 511
 - Pulmonary oedema* 113
 - Retention of urine*.....208
 - Rheumatic fever* 515
 - Subarachnoid haemorrhage* 127
 - Swollen/painful joint, adult*..... 325
 - Swollen/painful joint, child* 550
 - Wounds*..... 162
- Acute coronary syndrome (ACS) 107
- Clinical pathways, links* 107
 - Indications for reperfusion* 109
 - Primary PCI* 110
 - Thrombolysis at rural or remote facility*..... 110
- Acute post strep glomerulonephritis (APSGN) ...511
- Acute rheumatic fever (ARF) 515
- Acute severe behavioural disturbance (ASBD)...336
- Adrenaline (epinephrine), for anaphylaxis
- Autoinjector*..... 83
 - Doses* 83
 - Epipen, Anapen*..... 83
- Adult presentation
- History and physical examination*.....17
- Advanced Life Support (ALS) 48
- Algorithms* 51
- Aerosol sniffing 211, 216
- Airway obstruction
- Choking* 78
 - Foreign body*..... 78
- Alcohol
- Poisoning*..... 211, 213
 - Related epigastric pain, see Gastritis*..... 202
 - Withdrawal*..... 356
 - Withdrawal scale*..... 357
- Alkalis, burns 182
- Allergic reaction, mild..... 248
- Allergic reaction, severe, See Anaphylaxis..... 82
- Allergic rhinitis 248
- Altered level of consciousness (LOC) 60
- Possible causes*..... 61
- Amphetamines, overdose 211, 219
- Amputated body part 138
- Anaemia, child 546
- Analgesia 32, 34
- Acute pain*..... 32

Anapen	83	<i>Skin, child</i>	485
Anaphylaxis	82	<i>STI/BBV</i>	445
<i>Adrenaline (epinephrine) doses</i>	83	<i>Trauma</i>	134
<i>Autoinjector</i>	83	Asthma attack	95
Angina.....	107	Asymptomatic bacteriuria, pregnancy	375
Animal bites	173	Asystole	48
Anogenital ulcers/lumps	465	Athletes foot.....	311
Antenatal care	364	Atrial fibrillation (AF).....	119
<i>Syphilis, increased/high risk</i>	368	Attempted suicide	
Antepartum haemorrhage (APH)	390	<i>Mental health emergency</i>	336
Anti-D	369	<i>Overdose/poisoning</i>	211, 211
Antiemetics	42	<i>Suicidal behaviour</i>	344
Anxiety	354	<i>Traumatic injuries eg hanging</i>	134
Aortic compression, in PPH	421	AVPU	562
Aortic dissection	104	B	
Apgar score	412	Backslab, how to.....	153
APH, See Antepartum haemorrhage	390	Bacterial sinusitis, acute	252
APO (acute pulmonary oedema).....	113	Bacterial vaginosis (BV).....	457
APSGN.....	511	Barmah Forest virus.....	327
ARF (acute rheumatic fever).....	515	Basic Life Support (BLS)	46
<i>Clinical pathway, link</i>	517	<i>Algorithm</i>	47
<i>Prophylaxis - Bicillin LA injections</i>	330	Bat bite/scratch	176
<i>Symptoms, diagnosis</i>	515	BCG vaccine	555
Arrhythmias.....	119	Behavioural and psychological symptoms, dementia.....	348
Arsenic, poisoning	211, 214	Behavioural disturbance, See Mental health emergency	336
Arterial occlusion, leg.....	123	Bends/decompression illness (DCI)	185
Arterial tourniquet.....	134	Best possible medication history (BPMH)	560
Assault	241	<i>High risk medicines</i>	560
<i>Domestic and family violence</i>	241	<i>Medication history checklist</i>	560
<i>Sexual assault</i>	243	BGL, low	91
Assessment		Bicillin LA, injection pain.....	563
<i>Abdominal pain</i>	196	Bicillin LA, rheumatic fever	330
<i>Chest pain</i>	103	Bimanual compression, in PPH	419
<i>Ear</i>	519	Bipolar disorders.....	352
<i>Eye</i>	276	Birth, imminent	
<i>Hydration, adult</i>	200	<i>Apgar score</i>	412
<i>Hydration, child</i>	535	<i>Breech</i>	426
<i>Mental health</i>	336	<i>Care of newborn</i>	412
<i>Mental State Examination (MSE)</i>	339		
<i>Pain</i>	32		
<i>Skin, adult</i>	21		

<i>Cord prolapse</i>	414	Box jellyfish stings	231
<i>Episiotomy</i>	407	BP, See Blood pressure	
<i>Haemorrhage</i>	417	Bradyarrhythmia	120
<i>Neonatal resuscitation</i>	408	Breast abscess.....	431
<i>Preterm baby</i>	409	Breech birth	426
<i>Shoulder dystocia</i>	422	Broken bone, See Fracture	
Bite		Broken rib	140
<i>Animal</i>	173	Broken tooth	257
<i>Bat</i>	176	Bronchiolitis.....	503
<i>Blue-ringed octopus</i>	235	Bronchitis, adult.....	250
<i>Cat</i>	173	Bullrout sting.....	236
<i>Centipede</i>	229	Burns	177
<i>Dog</i>	173	<i>Assessment</i>	177
<i>Funnel-web spider</i>	225	<i>Bitumen</i>	183
<i>Human</i>	173	<i>Burns unit contact details</i>	179
<i>Monkey</i>	176	<i>Cement, phosphorous, petrol</i>	184
<i>Red-back spider</i>	227	<i>Chemical contact</i>	182
<i>Scorpion</i>	229	<i>Hydrofluoric acid</i>	183
<i>Snake</i>	222	<i>Rule of Nines</i>	178
<i>Spiders, other</i>	228	<i>Severe</i>	179
<i>Tick</i>	230	<i>Total body surface area %</i>	178
Bitumen, burn	182	Button battery ingestion/insertion	80
Bleeding		<i>Be button battery aware</i>	481
<i>After birth</i>	417	<i>Suspect if</i>	80
<i>Ectopic pregnancy</i>	371	Buzzy	563
<i>GI</i>	203	BV, See Bacterial vaginosis.....	457
<i>Nose</i>	190		
<i>Postnatal</i>	429	C	
<i>Post tooth extraction</i>	270	Caffeine, poisoning	211, 215
<i>Pregnancy, after 20 weeks</i>	390	Candidiasis	
<i>Pregnancy, early</i>	373	<i>Oral</i>	274
<i>Rectal</i>	204	<i>Skin</i>	313
Blood borne virus (BBV)	445	<i>Vaginal</i>	458
Blood pressure		Carbon monoxide inhalation	215
<i>High</i>	116	Carbuncles	302
<i>In children</i>	513	Cardiac arrest.....	46
Blood sugar level, low	91	Cardiac arrhythmias	119
Blood under nail.....	168	Cardiac clinical pathways links.....	107
Bluebottle and other jellyfish stings.....	234	Cardiopulmonary resuscitation (CPR).....	46
Blue-ringed octopus.....	235	Carditis, child (See ARF)	515
Boils.....	302		
<i>Incision and drainage</i>	303		
Bone/joint infection, child	550		
Bowel obstruction	205		

Catastrophic haemorrhage	
<i>Haemostatic dressing</i>	134
<i>Tourniquet</i>	134
Cat bite.....	173
Caustic and corrosive substance ingestion/ poisoning.....	211, 215
Cellulitis	
<i>Orbital/periorbital</i>	288
<i>Skin</i>	306
Cement, burn.....	182
Centipede bites.....	229
Cervical spine immobilisation.....	147
Cervical spine injury.....	147
Charcoal, activated.....	213
Chemical burn	
<i>Contact, skin</i>	182
<i>Eyes</i>	285
Chest pain	
<i>Assessment</i>	103
<i>Causes, other</i>	105
<i>Differential diagnosis</i>	103
<i>Life-threatening causes</i>	104
<i>Possible cardiac</i>	107
Chest wound/injuries.....	140
<i>Blunt trauma</i>	140
<i>Penetrating trauma</i>	141
<i>Pneumothorax</i>	141
Child	
<i>Button battery aware</i>	481
<i>Consider serious illness if</i>	480
<i>Could this be sepsis</i>	481
<i>Differential diagnosis</i>	488
<i>Abdominal pain</i>	493
<i>Cough</i>	490
<i>Fever</i>	489
<i>High BP (consider APSGN)</i>	512
<i>Limp/joint pain (also see ARF)</i>	550, 551
<i>Sore throat</i>	495
<i>Stridor</i>	491
<i>Vomiting</i>	492
<i>Estimated weight (kg) based on age</i>	49
<i>History and physical examination</i>	480
Child protection.....	551
<i>Reporting to Child Safety</i>	552
Chlamydia.....	452
Chlamydial conjunctivitis.....	292
Choking.....	78
<i>Flowchart</i>	79
Cholesteatoma.....	522
Chroming.....	216
Chronic condition medicines, supply by A&TSIHP/ IHW.....	332
Chronic suppurative otitis media (CSOM).....	529
Chronic wounds.....	323
Ciguatera poisoning.....	239
Clenched fist injury.....	173
Clinical consultation.....	25
Cocaine, overdose.....	211, 217
Cold, common.....	250
<i>Adult</i>	250
<i>Child</i>	494
Collapsed patient.....	46
Collecting wound swab.....	324
Compartment syndrome.....	160
Compound fractures.....	154
Condylomata lata.....	466
Cone shell envenomation.....	235
Conjunctivitis	
<i>Allergic</i>	291
<i>Bacterial</i>	291
<i>Chlamydial</i>	292
<i>Gonococcal</i>	291
<i>Trachoma</i>	293
<i>Viral</i>	291
Conscious state	
<i>Altered level of</i>	60
<i>Unconscious</i>	60
<i>Glasgow Coma Scale/AVPU</i>	562
Constipation, child.....	542
Contacts, See Qld contacts	
Contact tracing.....	450
Continuous positive airway pressure (CPAP).....	55
Contraception.....	438
<i>Combined oral contraceptive pill</i>	440

<i>Depo-provera</i>	439	Dementia, with severe behavioural symptoms ..	348
<i>Emergency</i>	443	Dengue fever	327
<i>Medroxyprogesterone acetate</i>	439	Dental, See Tooth	
<i>Options/types</i>	438	Depo-provera	439
<i>Progestogen only pill</i>	442	Depression.....	352
Controlled cord traction	404	Diabetes	
Convulsions	86	<i>Foot infection in</i>	321
<i>Febrile</i>	88	<i>Hyperglycaemia</i>	89
CoolSense.....	563	<i>Hypoglycaemia</i>	91
Coral cut.....	170	<i>In pregnancy</i>	378
Cord prolapse.....	415	<i>Ketoacidosis (DKA)</i>	89
Corneal abrasion	283	<i>Osteomyelitis</i>	321
Corneal ulcer	280	Diabetic ketoacidosis (DKA)	89
Cough, child	490	Diarrhoea/vomiting	
COVID-19	16	<i>Adult</i>	200
CPAP	55	<i>Child</i>	535
CPR	46	Digital nerve block.....	166
Criteria for early notification of trauma, See Front cover insert		Discharging ears	529
Croup	500	Dislocations	158
Crusted (Norwegian) scabies.....	317	<i>Shoulder</i>	158
C-spine immobilisation	147	Dog bite	173
Cyanide, poisoning	211, 215	Domestic and family violence (DFV)	241
Cystitis		<i>Contacts/referrals</i>	243
<i>Adult</i>	295	Donovanosis	467
<i>In pregnancy</i>	375	Drowning.....	101
D		DRSABCD resuscitation	46
DCI/bends.....	185	DRSCABCD, in trauma	134
Death, in absence of MO	561	Drug-induced psychosis.....	350
Decay, tooth	263	Dry perforation, eardrum	531
Decompression illness (DCI/bends)	185	Dry socket	271
Deep vein thrombosis (DVT)	124	DTs (delirium tremens)	356
De-escalation, of agitated person.....	337	DV, See Domestic and family violence	241
Dehydration		DVT	124
<i>Adult</i>	200	E	
<i>Child</i>	535	Eardrum	
Delirium	131	<i>Attic area</i>	521
Delirium tremens (DTs)	356	<i>Bulging, See AOM</i>	523
		<i>Dry perforation</i>	531
		<i>Normal</i>	521

- Traumatic rupture*..... 193
- Ears
- Acute otitis media (AOM)*..... 523
 - Assessment*..... 519
 - Cholesteatoma*..... 522
 - Chronic suppurative otitis media (CSOM)* ... 529
 - Cleaning, tissue spears* 530
 - Differential diagnosis*.....521
 - Dry perforation*.....531
 - Ear drops advice*..... 533
 - Otitis externa (OE)* 532
 - Otitis media with effusion (OME)* 528
 - Mastoiditis*.....521
 - Preventing infections*..... 519
- Ear wick, how to533
- Eclampsia 386
- Magnesium sulfate* 388
- Ectopic pregnancy..... 371
- Electrocution/electric shock..... 121
- Emergency contraception.....443
- Emla cream/patch.....563
- Endone36
- Entonox
- Acute pain*..... 39
 - Labour*402
- Envenomation, See Bites
- Epididymo-orchitis459
- Epigastric pain, See Chest pain assessment.....103
- Epiglottitis..... 510
- Epipen.....83
- Episiotomy407
- Epistaxis.....190
- Epstein-Barr virus 496
- Essential oils, poisoning211, 216
- Evacuation, See Retrieval/evacuation
- Exposure to cold, See Hypothermia.....186
- Eyes
- Assessment*..... 276
 - Chemical burn*..... 285
 - Corneal abrasion*..... 283
 - Differential diagnosis*.....280
 - Everting eyelid*..... 279
 - Examination* 277
 - Flash burn*.....284
 - Fluorescein*..... 278
 - Foreign body*..... 281
 - Hyphaema* 277
 - Injury - blunt/penetrating*..... 286
 - Laser exposure* 280
 - Orbital/periorbital cellulitis* 288
 - Pupils, eye movements*..... 278
 - Single red*..... 280
 - Sudden, painless loss of vision*..... 287
 - Tips*..... 276
 - Visual acuity*..... 278
- EZ-IO59
- F**
- FACES pain scale33
- Febrile convulsion 88
- Fentanyl38
- Fetal fibronectin (fFN) testing 398
- Fever
- In child*..... 489
 - Treating*..... 489
- First catch urine (FCU)..... 449
- Fish hook, removal of.....169
- Fish stings236
- Fitting..... 86
- In pregnancy*..... 386
 - Post seizure*.....86
- FLACC pain scale33
- Flail chest140
- Flash burn to eye 284
- Flu, adult250
- Fluorescein, eye examination278
- Fluoride varnish 264
- Folliculitis.....302
- Foot infection, diabetes..... 321
- Osteomyelitis* 321
- Foreign body (FB)
- Ear* 194
 - Eye* 281

Nose	194	Gout	326
Fracture		Group B Strep in pregnancy.....	395
<i>Backslab</i>	153	<i>Antibiotics during labour</i>	395
<i>Base of skull</i>	136	<i>Risk factors</i>	395
<i>Jaw</i>	157	<i>Swab, how to take</i>	393
<i>Limbs</i>	152	Gum disease	272
<i>Open (compound)</i>	154	<i>Gingivitis</i>	272
<i>Pelvis</i>	156	<i>Necrotising gingivitis</i>	272
<i>Plaster care advice</i>	153	<i>Periodontitis</i>	272
<i>Rib(s)</i>	140	H	
<i>Skull</i>	143	Haematemesis	203
<i>Spine</i>	147	Haemoglobin (Hb) ranges, child.....	546
Funnel-web spider bite.....	225	Haemorrhage	
G		<i>After birth/postpartum (PPH)</i>	417
Gamma-hydroxybutyrate (GHB)		<i>Antepartum</i>	390
<i>Overdose</i>	211, 216	<i>Arterial tourniquet</i>	134
Gastritis.....	202	<i>Epistaxis</i>	190
Gastroenteritis		<i>Haemostatic dressing</i>	134
<i>Adult</i>	200	<i>In trauma</i>	134
<i>Child</i>	535	<i>Rectal</i>	204
Gastrointestinal (GI) bleeding, upper	203	<i>Secondary postpartum</i>	429
GBS swab, how to	393	<i>Shock</i>	62
GCS	562	<i>Upper GI</i>	203
Genital herpes.....	472	Haemothorax	140
Genital ulcers/lumps.....	465	Hallucinations/delusions.....	336
<i>Common causes</i>	466	Hallucinogens, overdose.....	211, 216
Genital warts	474	Hand, foot and mouth disease	496
Gestational diabetes	378	Hanging	
<i>OGTT</i>	379	<i>Assessment, See Traumatic injuries</i>	134
<i>Screening and diagnosis</i>	378	<i>Mental health emergency</i>	336
Giardiasis.....	538	Hansen's disease.....	315
GI bleed, upper	203	Hay fever	248
Gingivitis.....	272	Headache.....	127
Glandular fever.....	496	<i>Assessment of</i>	127
Glasgow Coma Scale (GCS)	562	<i>Meningitis</i>	72
Glaucoma, acute	280	<i>Migraine</i>	129
Glue ear	528	<i>Subarachnoid haemorrhage</i>	127
Glue (skin), See Tissue adhesive	167	<i>Sudden onset severe</i>	127
Glue, sniffing.....	211, 216	<i>Tension type</i>	129
Gonorrhoea.....	452	<i>Thunderclap</i>	127
		Head injuries.....	143
		<i>Advice</i>	146

- Risk factors - adult*..... 144
Risk factors - child 144
- Head lice/nits..... 319
- Heart attack, See Acute coronary syndrome..... 107
- Heart failure, See APO 113
- Heart murmur, See ARF..... 515
- Heart rate/rhythm, abnormal
- Arrhythmias* 119
 - Asystole* 48
 - Atrial fibrillation (AF)* 119
 - Bradycardia* 120
 - Pulseless Electrical Activity (PEA)* 48
 - Tachycardia* 119
 - Ventricular fibrillation (VF)*..... 48
 - Ventricular tachycardia (VT)*..... 48
- Heat stroke/exhaustion..... 188
- Heel prick, baby (how to)..... 414
- Hepatitis
- Hep A* 451
 - Hep B* 451
 - Hep C* 451
 - Hep C risk factors*..... 447
- Herpes, genital..... 472
- History and physical examination
- Adult*..... 17
 - Child* 480
- HIV
- Antiretroviral therapy (ART)*..... 476
 - Positive test*..... 477
 - Post-Exposure Prophylaxis (PEP)*..... 477
 - Pre-Exposure Prophylaxis (PrEP)*..... 477
 - Testing for*..... 476
- Hives 248
- Human immunodeficiency virus (HIV) 476
- Human papilloma virus (HPV)..... 474
- Hydration assessment
- Adult*..... 200
 - Child* 535
- Hydrofluoric acid
- Burn*..... 182
 - Poisoning*..... 211, 217
- Hyperglycaemia, See DKA 89
- Hyperosmolar hyperglycaemic state (HHS)..... 89
- Hypertension
- BP, normal values in child* 513
 - Emergency*..... 116
 - In pregnancy*..... 383
- Hyperthermia 188
- Hyphaema..... 277
- Hypoglycaemia..... 91
- In pregnancy*..... 382
 - Newborn* 414
- Hypothermia 186
- I**
- i-gel airway..... 56
- IM injection, max. mL 67
- Immediate care of newborn See Care of newborn
- Imminent birth 403
- Immunisations, adult/child..... 554
- Tetanus* 557
- Immunocompromised
- Adult*..... 19
 - Child* 483
- Impetigo..... 298
- Implanon, See Contraception
- Incision and drainage, boil..... 303
- Infected scabies 298
- Influenza, adult 250
- Injection pain, managing..... 563
- Injuries
- Abdominal* 150
 - Chest*..... 140
 - Eye* 286
 - Finger tip, crush/amputation*..... 168
 - Fracture, limb(s)*..... 152
 - Head* 143
 - Laceration/acute wound*..... 162
 - Pelvis* 156
 - Spinal* 147
 - Sprains/soft tissue injury*..... 159
 - Traumatic*..... 134
- Insect in ear, See Foreign body, ear
- Intra cranial pressure, raised 143

Intraosseous access, how to	57	Leprosy	315
<i>EZ-IO</i>	59	Lightning strike	121
<i>Manual insertion</i>	59	LMA, insertion	56
<i>Sites</i>	58	<i>i-gel</i>	56
Intussusception	545	Log roll, how to	148
Involuntary assessment	338	Loss of vision, sudden	287
IO, See Intraosseous access	57	Løvsett's manoeuvre	427
Iritis, acute	280	Low abdominal pain, female	462
Iron, overdose	211, 217	Lymphogranuloma venereum (LGV)	467
Irrigation, eye	285	Lyssavirus	176
Irukandji jellyfish sting	233		
Ischaemia, lower leg	123	M	
ISOBAR	25	Magnesium sulfate drug box	
IUD, See Contraception options	438	<i>In pregnancy</i>	388
		Major burns	177
J		Malaria	327
Jaw fracture	157	Managing injection pain	563
Jellyfish stings		Mandatory reporting, See Child protection	551
<i>Bluebottle</i>	234	Manual removal, placenta	421
<i>Box</i>	231	Marine injury, penetrating	236
<i>Irukandji</i>	233	Marine lacerations, See Water related wounds ..	170
<i>Other</i>	234	Mastitis	431
Jock itch	311	Mastoiditis, acute	521
Joint, painful/swollen		Mauriceau-Smellie-Veit manoeuvre	428
<i>Adult</i>	325	McRoberts (for shoulder dystocia)	422
<i>Child</i>	550	Medication history, best	560
		Medicines, supply	
K		<i>A&TSIHP</i>	332
Kidney stones	206	<i>IHW</i>	332
		<i>RIPRN (Qld)</i>	11
L		<i>RN</i>	11
Labour		Medroxyprogesterone acetate	439
<i>1st stage</i>	400	Melaena	204
<i>2nd stage/birth</i>	403	Melioidosis (pneumonia)	
<i>Group B Strep prophylaxis in</i>	395	<i>Adult</i>	253
<i>Preterm</i>	397	<i>Child</i>	506
Laceration, See Acute wounds	162	Meningitis	72
Laryngeal mask airway (LMA), insertion	56	Mental health emergency	336
Lead, poisoning	211, 217	<i>Bipolar</i>	352
Leg ischaemia, acute	123		

- De-escalation, of agitated person*..... 337
- Depression*..... 352
- Forms (Qld)*
- Emergency Examination Authority* 336
 - Recommendation for Assessment*.. . . 338
 - Request for Police Assistance* 338
- Mental health team, response time*..... 343
- Mental State Examination (MSE)*..... 339
- Non consenting or uncooperative patient* ... 338
- Panic attack*..... 354
- Police assistance*..... 338
- Psychosis*..... 350
- Safety, of staff*..... 337
- Sedation, of agitated person* 340
- Suicidal behaviour* 344
- Mental State Examination (MSE)339
- Methanol, poisoning.....211, 219
- Methoxyflurane39
- M. genitalium452
- Migraine.....129
- Miscarriage373
- MI, See Myocardial infarction 107
- Missed pill
- Combined oral contraceptive pill* 441
 - Progestogen only pill*..... 442
- Molluscum contagiosum467
- Mood, disorders.....352
- Morning after pill.....443
- Morphine37
- Mosquito borne diseases.....327
- Barmah Forest virus* 327
 - Dengue fever*..... 327
 - Malaria* 327
 - Ross River virus* 327
- Mouth ulcers265
- MSE, See Mental State Examination339
- Mycoplasma genitalium452
- Myocardial infarction.....107
- N**
- Nail
- Blood under*..... 168
 - Fungal infection* 311
- Naloxone
- Acute pain*..... 39
 - In overdose* 221
- Nappy rash.....320
- Nasal packing 191
- Nausea and vomiting 40
- Near drowning, See Drowning 101
- Needle decompression/thoracocentesis..... 141
- Neonatal resuscitation 408
- Neutropenic sepsis pathway - child 64
- Newborn
- Apgar score*..... 412
 - Care of* 412
 - Heel prick, how to*..... 414
 - Hypoglycaemia* 414
 - Life support flowchart*..... 410
 - Preterm* 409
 - Resuscitation* 408
- NEXUS criteria148
- Nicotine, poisoning.....211, 218
- Nits/head lice 319
- Norwegian scabies.....316
- Nose bleed.....190
- NSAID, overdose211, 218
- NSTEACS107
- NSTEMI107
- O**
- OGTT379
- Oesophageal varices.....203
- Open (compound) fractures 154
- Opioid, overdose..... 211, 218
- Oral contraceptive pill, combined..... 440
- Oral thrush274
- Orbital/periorbital cellulitis..... 288
- Organophosphates, poisoning.....211, 218
- Osteomyelitis *In diabetic foot* 321
- Otitis externa (OE)532

Otitis media, acute (AOM)	523	Patient presentation - adult and child	16
Otitis media, chronic suppurative (CSOM).....	529	<i>Rapid assessment</i>	16
Otitis media, with effusion (OME).....	528	PE.....	125
Overdose, medicines/other	211, 213	Pelvic binder, how to	156
Oxycodone	36	Pelvic inflammatory disease (PID)	462
Oxygen	53	Pelvis, fractured	156
<i>In COPD</i>	53	Penetrating marine injuries	236
<i>Masks, nasal prongs</i>	54	Penile discharge.....	452
<i>Specific scenarios</i>	53	Pericardial tamponade	104
P		Pericarditis	104
Paediatric presentation		Periorbital cellulitis	288
<i>Be button battery aware</i>	481	Pertussis	508
<i>Could this be sepsis</i>	481	<i>Immunisation</i>	554
<i>Differential diagnosis</i>	488	<i>Immunisation in pregnancy</i>	366, 367
<i>History and physical examination</i>	480	Pesticides or insecticides, poisoning	211, 218
<i>Risk signs, serious illness</i>	480	Petechial rash	72
Pain.....	32	Petrol	
<i>Abdominal</i>	196	<i>Burn</i>	182
<i>Acute</i>	32	<i>Sniffing</i>	211, 216
<i>Analgesia</i>	34	Pharyngitis, See Sore throat	495
<i>Assessment scales</i>	33	Phosphorus, burn	182
<i>Chest</i>	103	Physical restraint (avoiding)	337
<i>Ear</i>	519	PIC, Poisons Information Centre	211
<i>Eye</i>	276	PID, See Pelvic inflammatory disease.....	462
<i>Management</i>	33	Pityriasis versicolor.....	314
<i>Renal colic/kidney stones</i>	206	Placenta	
<i>Sedation score</i>	35	<i>Delivery of</i>	404
<i>Testicular/scrotal</i>	209	<i>Manual removal of</i>	421
Pain relief		<i>Checking</i>	406
<i>Step wise approach</i>	34	Plaster backslab, how to/care of	153
<i>When giving injection</i>	563	Pneumonia	
Panic attack.....	354	<i>Adult</i>	253
Paracetamol.....	36	<i>Child</i>	506
<i>Overdose</i>	211, 218	Pneumothorax	
<i>Safe use</i>	36	<i>Haemothorax</i>	140
Paralysis tick	230	<i>Open</i>	141
Paraquat, poisoning.....	211, 216	<i>Simple</i>	140
Past history, obtaining		<i>Tension</i>	140
<i>Adult</i>	19	Poisoning and overdose.....	211
<i>Child</i>	483	<i>Activated charcoal</i>	213
Pathology, ordering (Qld)	23		
Patient death in absence of MO	561		

- Amphetamines..... 219
- Arsenic..... 214
- Assessment, initial.....211
- Caffeine.....215
- Carbon monoxide.....215
- Caustic/corrosive substances.....215
- Ciguatera 239
- Cocaine..... 219
- Coolants, antifreeze, brake fluids, solvents. 219
- Cyanide.....215
- Essential oils..... 216
- Gamma-hydroxybutyrate (GHB)..... 216
- Hallucinogens..... 216
- Herbicides eg paraquat..... 216
- Hydrofluoric acid.....217
- Iron217
- Lead.....217
- Medicines 213
- Methanol 219
- Naloxone..... 221
- Nicotine..... 218
- Opioids 218
- Paracetamol..... 218
- Pesticides/insecticides..... 218
- Petrol, fuels, oils..... 216
- Poisons Information Centre (PIC)211
- Rat and mouse poison..... 219
- Stimulant drugs 219
- Toxicology assessment 212
- Poisons Information Centre (PIC) 211
- Postictal..... 86
- Postnatal check.....434
- Postnatal psychosis350
- Postpartum haemorrhage (PPH)
- Primary*.....417
- Secondary*.....429
- Post seizure..... 86
- Post streptococcal glomerulonephritis, acute (APSGN)511
- PPH, See Primary postpartum haemorrhage..... 417
- PR bleeding..... 204
- Preeclampsia/eclampsia..... 386
- Magnesium sulfate* 388
- Pregnancy
- Antenatal care*..... 364
- Asymptomatic bacteriuria (ASB)*..... 375
- Diabetes in*..... 378
- Ectopic* 371
- Fitting in (eclampsia)*..... 386
- Group B Strep*..... 395
- GBS swab, how to*..... 393
- Prophylaxis*..... 395
- Risk factors*..... 395
- Hypertension in*..... 383
- Hypoglycaemia in* 382
- Labour*
- 1st stage*..... 400
- Preterm*..... 397
- Leaving community, planning* 364
- Neonatal resuscitation* 408
- OGTT*..... 379
- Rh D immunoglobulin* 369
- Rupture of membranes, before labour*..... 392
- Syphilis, increased/high risk of*..... 368
- Syphilis, treatment in* 470
- Urinary tract infection in* 375
- Pregnancy, bleeding
- After 20 weeks*..... 390
- Before 20 weeks*..... 373
- Pressure bandage, snake bite223
- Preterm baby, care of..... 409
- Preterm labour397
- Fetal fibronectin (fFN) testing*..... 398
- Preterm prelabour rupture of membranes, See PROM.....392
- Primary and secondary survey, trauma 134
- Primary postpartum haemorrhage (PPH) 417
- PROM, See Prelabour rupture of membranes.....392
- Psychosis/psychotic disorders.....350
- Pulmonary embolism (PE) 125
- Pulmonary oedema, acute (APO)..... 113
- Pulseless Electrical Activity (PEA) 48
- Pyelonephritis
- Adult*..... 295
- In pregnancy*..... 375
- Pyloric stenosis544

Q	
Q Fever vaccine	555
Qld contacts	
<i>Burns units</i>	179
<i>Child Safety</i>	552
<i>RFDS</i>	24
<i>RSQ</i>	24
<i>TEMSU</i>	24
Quick-Wee.....	549
Quinsy.....	495
R	
Rabies.....	176
Raised intra cranial pressure, signs	143
Rape, See Sexual assault	243
Rapid assessment, patient.....	16
Rat/mouse poison	211, 219
Recreational drugs, overdose	211
Rectal bleeding	204
Red-back spider bite	227
Red eye(s)	280
Renal colic.....	206
Reperfusion options, ACS.....	109
Reportable death	561
Retention of urine, acute	208
Retrieval/evacuation	26
<i>Preparation</i>	27
<i>Who to contact</i>	26
Retrieval Services Queensland (RSQ)	24
Rh D immunoglobulin	369
Rheumatic fever, acute (ARF).....	515
<i>Bicillin LA injections (prophylaxis)</i>	330
Rhinitis, allergic	248
Rib, broken.....	140
Ring, removal of	170
Ringworm.....	311
RIPRN	11
<i>Order pathology (Qld)</i>	23
<i>Qld EPA</i>	11
<i>Supplying medicines</i>	11
<i>Victoria</i>	11
RN supplying (medicines)	11
Ross River virus	327
Royal Flying Doctor Service.....	24
RSQ.....	24
Rule of nines, burns	178
Rupture of membranes, prelabour.....	392
S	
Scabies	316
<i>Crusted (Norwegian)</i>	316
<i>Infected</i>	298
Scarlet fever	496
Schizophrenia.....	350
School sores, See Impetigo.....	298
Scorpion stings	229
Scrotal pain.....	209
Sea snake bite.....	222
Sea urchin sting	236
Secondary postpartum haemorrhage (PPH)	429
Secondary survey, trauma	135
Second skin, See Tinea versicolor	314
Sedation score, pain	35
Seizures	86
Self-harm, See Mental health emergency.....	336
Sepsis/septic shock.....	64
<i>Neutropenic sepsis pathway - child</i>	64
<i>Risk factors</i>	65
<i>Rural/remote sepsis pathways</i>	64
<i>Screen for</i>	64
Septic arthritis, child	550
Sexual assault/abuse - adult/child	243
Sexually transmitted infections (STI)	445
<i>Assessment, STI/BBV</i>	445
<i>Asymptomatic check-up</i>	446
<i>Bacterial vaginosis (BV)</i>	457
<i>Chlamydia</i>	452
<i>Contact tracing</i>	450
<i>Epididymo-orchitis</i>	459
<i>Flowchart</i>	451

- Contact of person with STI/BBV 451
 Positive pathology test..... 451
 Symptoms of an STI..... 451
 Gonorrhoea..... 452
 Hepatitis A, B, C.....451
 Herpes..... 472
 HIV..... 476
M. genitalium..... 452
 Pathology..... 448
 Penile discharge 452
 Self collected swabs/urine..... 449
 Syphilis 468
 Tests, STI/BBV 448
Trichomonas..... 452
 Ulcers/lumps, anogenital..... 465
 Vaginal discharge 452
 Warts 474
 Shingles.....309
 Shock.....62
 Causes..... 63
 Signs of..... 62
 Shoulder dystocia422
 Sinusitis, bacterial 252
 Skin assessment
 Adult.....21
 Child..... 485
 Skin glue, See Tissue adhesive 167
 Skin sores, infected.....298
 Snake bite.....222
 Pressure bandage..... 223
 Sniffing, petrol, glue, aerosol 211, 216
 Sore throat495
 Spider bite
 Funnel-web (big black)..... 225
 Other..... 228
 Red-back..... 227
 Spinal injuries..... 147
 Moving patient.....149
 Sponge sting.....238
 Sprains/soft tissue injury..... 159
 Status epilepticus86
 STEMI..... 107
 STI, See Sexually transmitted infections
 Stimulant drugs, overdose 211, 219
 Stinging tree.....240
 Stingray injury236
 Stings
 Bluebottle 234
 Blue-ringed octopus..... 235
 Box jellyfish..... 231
 Centipede..... 229
 Cone shell 235
 Fish 236
 Irukandji 233
 Other jellyfish..... 234
 Scorpion 229
 Sea urchins 236
 Sponges..... 238
 Stinging tree 240
 Stonefish sting.....236
 Strangulation, eye signs.....280
 Stridor, in child..... 491
 Stroke 130
 Strongyloides, See Worms 540
 Subarachnoid haemorrhage, acute..... 127
 Submersion/drowning 101
 Subungual (under nail) haematoma..... 168
 Sucking chest wound141
 Suicide/attempted
 Mental health emergency..... 336
 Overdose/poisoning 211
 Suicidal behaviour 344
 Traumatic injuries eg hanging..... 134
 Supply, chronic medicines by A&TSIHP/IHW 332
 Supply medicines, RN/RIPRN11
 Supraglottic airway eg LMA56
 Suspected acute coronary syndrome clinical pathway 108
 Suturing166
 Swimmer's ear, See Otitis externa 532
 Swollen/painful joint
 Acute rheumatic fever..... 515
 Adult..... 325
 Child 550
 Sydenham chorea 516

Syphilis	468	<i>Dry socket</i>	271
<i>Contact tracing</i>	470	<i>Fluoride varnish</i>	264
<i>In pregnancy</i>		<i>Knocked out</i>	257
<i>Increased/high risk</i>	368	<i>Post extraction bleeding</i>	270
<i>Treatment</i>	470	<i>Replant knocked out</i>	258
<i>Pathology interpretation</i>	469	<i>Trauma</i>	257
Syphilis Surveillance Service (Qld) (QSSS)	468	Toothache	261
		<i>Common causes</i>	262
T		Tooth-knuckle injury.....	173
Tachyarrhythmia.....	119	ToP, See Termination of pregnancy	362
Tazer gun.....	121	Torsion of testes	209
TB.....	255	Tourniquet, haemorrhage control	134
Teeth See Tooth		Toxicology assessment.....	211
TEMSU/telehealth	24	Trachoma	293
Tenecteplase.....	111	Tranexamic acid, drug box.....	139
Tension pneumothorax	140	Transient ischaemic attack (TIA)	130
Termination of pregnancy.....	362	Trauma, criteria for early notification See Front cover insert	
Testicular/scrotal pain.....	209	Traumatic injuries.....	134
Testicular torsion.....	209	<i>Abdominal</i>	150
Tetanus		<i>Amputated body part</i>	138
<i>Booster</i>	557	<i>Chest</i>	140
<i>Immunisation</i>	557	<i>Dislocations</i>	158
<i>Prone wound</i>	557	<i>Head</i>	143
Throat, sore.....	495	<i>Jaw</i>	157
Thrombolysis, at rural or remote facility.....	110	<i>Limb fractures/splinting</i>	152
<i>Tenecteplase</i>	111	<i>Moving patient</i>	149
Thrush		<i>Log roll, how to</i>	149
<i>Oral</i>	274	<i>Open fractures</i>	154
<i>Skin</i>	313	<i>Pelvis fracture</i>	156
<i>Vaginal</i>	458	<i>Pregnant woman with</i>	138
TIA.....	130	<i>Primary/secondary survey</i>	134
Tick bites.....	230	<i>Spinal</i>	147
<i>Paralysis</i>	230	<i>Tourniquet, catastrophic haemorrhage</i>	134
Tinea	311	<i>Tranexamic acid</i>	139
<i>Versicolor</i>	314	Traumatic rupture of eardrum	193
Tissue adhesive	167	Trichomonas	452
Tissue spears, how to.....	530	Tropical ear.....	532
Tonsillitis.....	495	Tuberculosis (TB).....	255
Tooth		Tuning fork, hearing test.....	193
<i>Abscess</i>	267		
<i>Broken/loose from trauma</i>	257		

- U**
- Ulcer
- Chronic/non healing wound*..... 323
 - Corneal*280
 - Genital* 465
 - Mouth* 265
- Umbilical cord prolapse 415
- Unconscious patient60
- Possible causes*..... 61
- Unstable angina 107
- Upper respiratory tract infection (URTI)
- Adult*..... 250
 - Child* 494
- Urinary retention, acute.....208
- Urinary tract infection (UTI)
- Adult*..... 295
 - Child* 548
 - In pregnancy*.....375
- URTI, See Upper respiratory tract infection
- Urticaria248
- Uterine inversion 421
- UTI, See Urinary tract infection
- V**
- VA278
- Vaccines..... 554
- Vaginal bleeding
- After 20 weeks pregnancy*..... 390
 - Before 20 weeks pregnancy*.....373
 - Ectopic pregnancy*.....371
 - Primary postpartum haemorrhage (PPH)*.....417
 - Secondary postpartum haemorrhage (PPH)* 429
- Vaginal discharge.....452
- Ventricular fibrillation (VF)48
- Ventricular tachycardia (VT).....48
- Ventrogluteal injection, how to.....564
- Vision, sudden loss.....287
- Visual acuity (VA)278
- Vital signs, normal
- Adult*.....17
 - Child*.....480
 - Child BP*.....513
- Vitamin K, for newborn 413
- Voltage, high121
- Vomiting.....40
- Assessment of*..... 40
 - Blood* 203
 - Child, causes*..... 492
 - Coffee grounds*..... 203
 - Nausea* 40
 - With diarrhoea, adult* 203
 - With diarrhoea, child*.....535
- W**
- Warts, anogenital.....474
- Water related wounds 170
- Waters broken, pregnancy.....392
- Weight (kg) based on age - child.....49
- Wells score
- DVT suspected*.....124
 - for PE* 126
- Wernicke encephalopathy.....356
- Whooping cough508
- Worms.....540
- Wounds
- Acute*..... 162
 - Care, dressings (chronic)*..... 324
 - Chronic* 323
 - Coral cut*.....170
 - Gravel rash*.....163
 - Repair* 162
 - Special sites/considerations*.....167
 - Water related*.....170
- Wound swab, how to324
- X**
- Y**
- Z**

Notes

Notes

