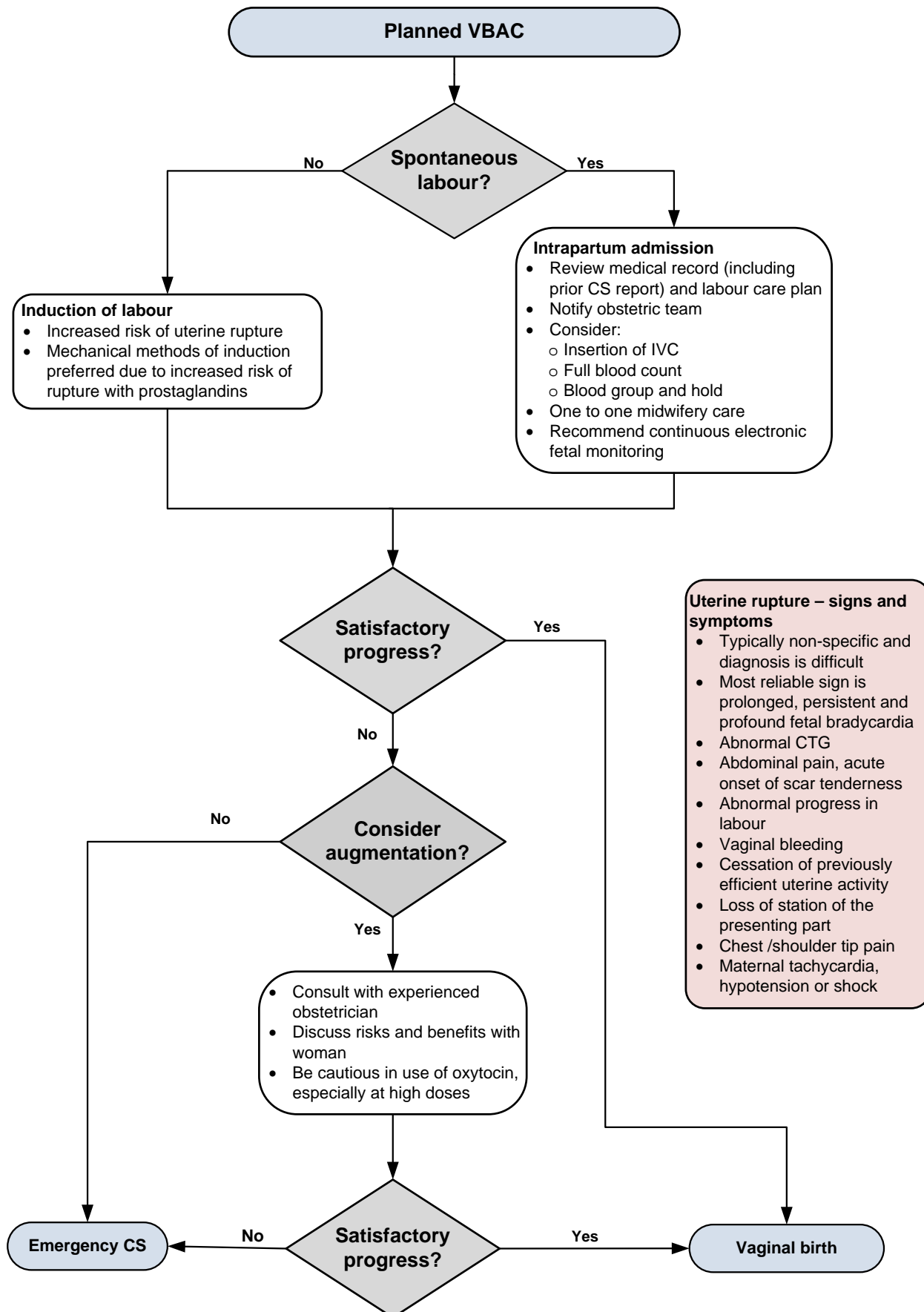


Planned vaginal birth after caesarean (VBAC)



Uterine rupture – signs and symptoms

- Typically non-specific and diagnosis is difficult
- Most reliable sign is prolonged, persistent and profound fetal bradycardia
- Abnormal CTG
- Abdominal pain, acute onset of scar tenderness
- Abnormal progress in labour
- Vaginal bleeding
- Cessation of previously efficient uterine activity
- Loss of station of the presenting part
- Chest /shoulder tip pain
- Maternal tachycardia, hypotension or shock

CS: caesarean section; **CTG:** cardiotocograph; **FHR:** fetal heart rate; **IVC:** intravenous catheter; **VBAC:** Vaginal Birth after caesarean section

State of Queensland (Queensland Health) 2020
<https://creativecommons.org/licenses/by-nc-nd/4.0/health.qld.gov.au>
 Queensland Clinical Guidelines, Guidelines@health.qld.gov.au

