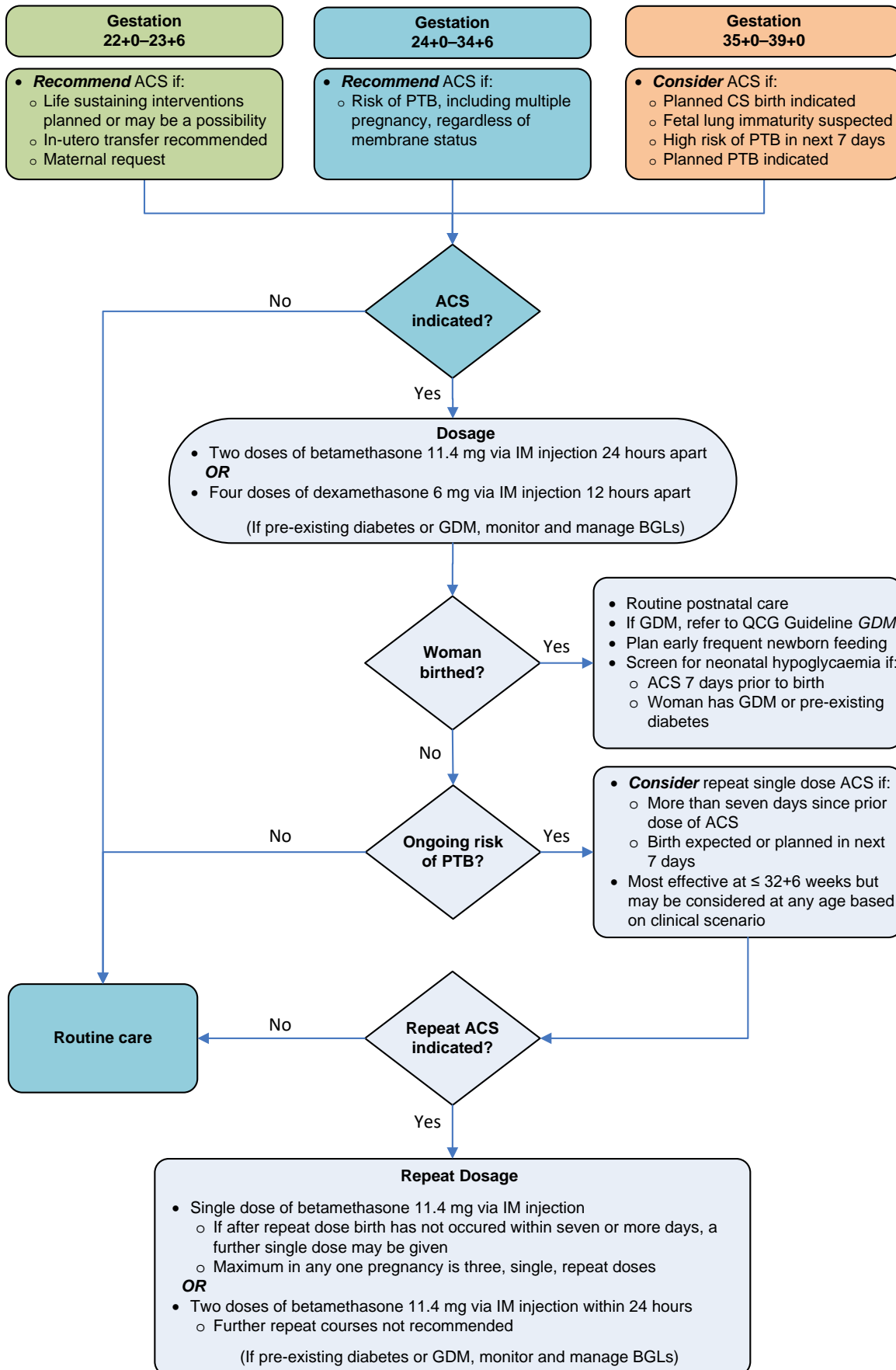


# Administration of ACS



**ACS:** antenatal corticosteroids, **BGL:** blood glucose levels, **CS:** caesarean section, **GDM:** gestational diabetes mellitus, **IM:** intramuscular, **PTB:** preterm birth, **QCG:** Queensland Clinical Guidelines, ≤ less than or equal to

Queensland Clinical Guidelines: Antenatal corticosteroids. Flowchart version: F21.64-1-V1-R26