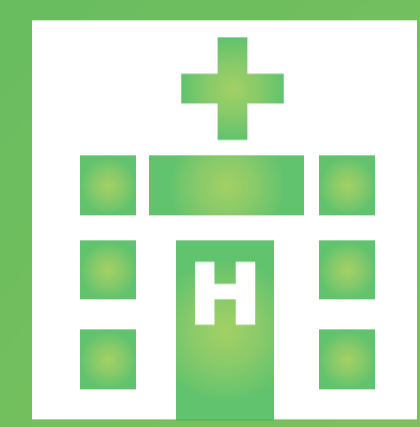
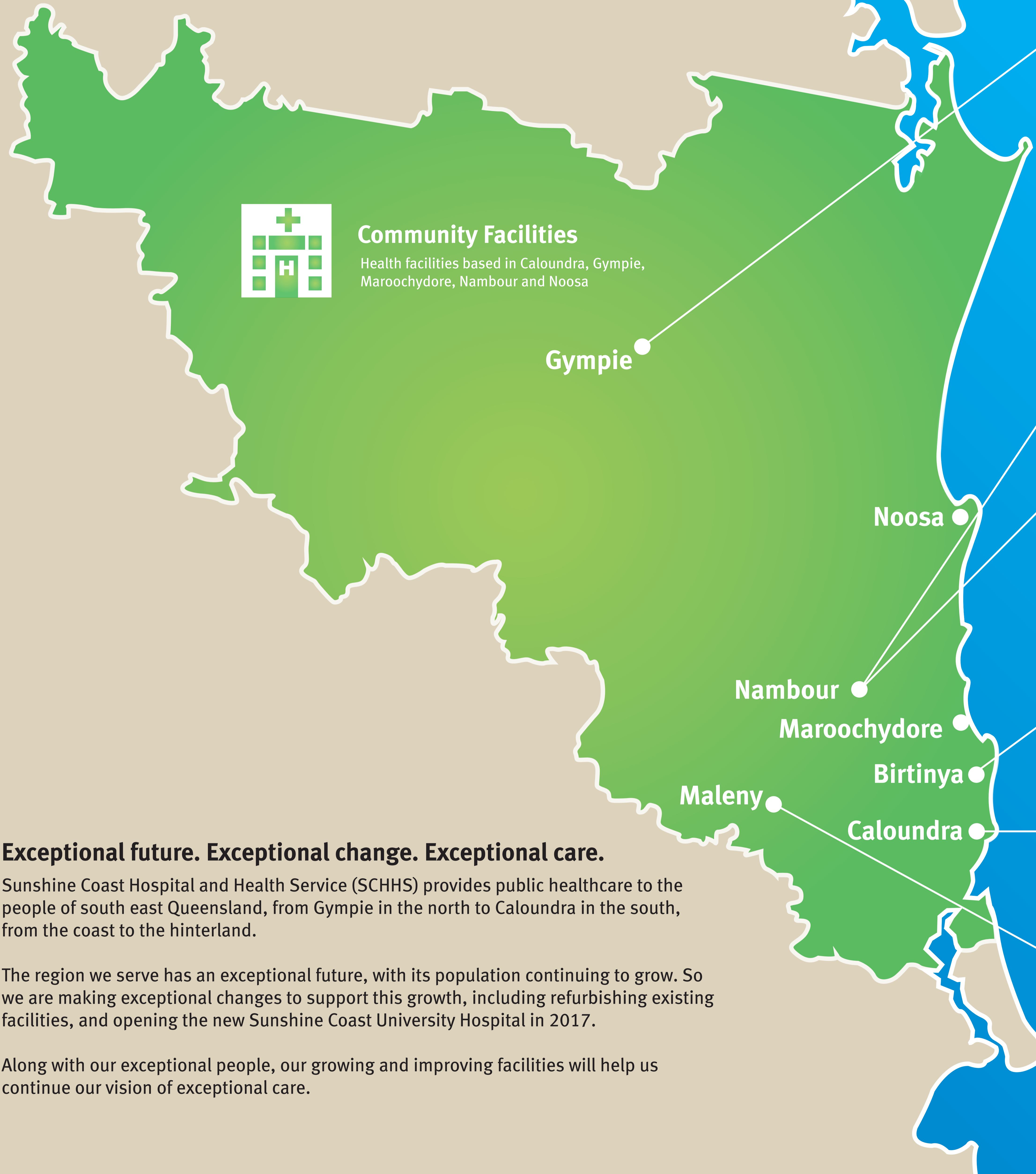


Our facilities



Community Facilities

Health facilities based in Caloundra, Gympie, Maroochydore, Nambour and Noosa

Gympie

Noosa

Nambour

Maroochydore

Birtinya

Maleny

Caloundra



Gympie Hospital

Emergency Department, Surgical and Medical Services, Maternity, Palliative Care, Rehabilitation, Renal Dialysis, Specialist Stroke Unit, a range of community-based adult and child services.



Nambour General Hospital

Emergency Department, Surgical and Medical Services, Chemotherapy, Renal Dialysis, Mental Health Services, Rehabilitation, Subacute Services, Specialist Ambulatory Care Services, Community Health Services.



Glenbrook Residential Aged Care Facility

45 bed purpose built facility, providing aged care in a home-like environment.



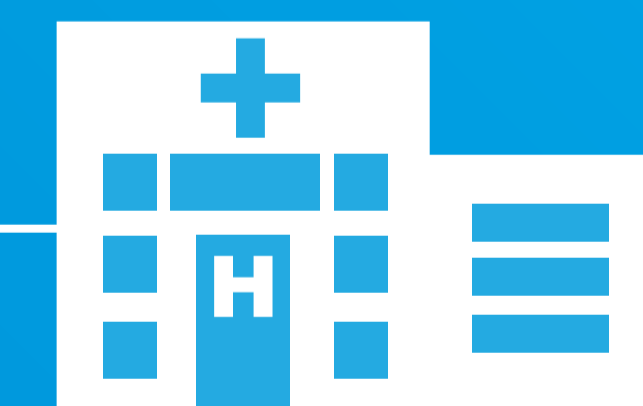
Sunshine Coast University Hospital

Opening April 2017

Emergency Department, Cancer Care including radiation therapy and chemotherapy, Specialised Medical and Surgical Services, Trauma Service, Paediatric Service, Maternity Services, Special Care Nursery, Rehabilitation, Renal Dialysis, Mental Health, Interventional and Diagnostic Clinical Support Services, Specialist Ambulatory Care Services, Allied Health Services.

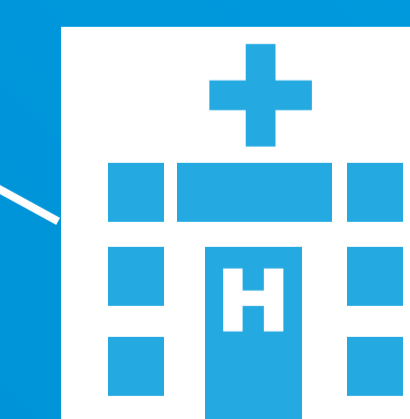
Sunshine Coast Health Institute

Purpose built facility for clinical research, training and teaching, in partnership with University of the Sunshine Coast, TAFE Queensland East Coast, and a medical school university.



Caloundra Health Service

Palliative Care, Community Services including Oral Health and Child Health, Renal Dialysis, Ophthalmology, Minor Injury and Illness Clinic.



Maleny Soldiers Memorial Hospital

Emergency Department, Medical Services, Palliative Care, Ambulatory Clinics, Essential Diagnostic and Clinical Support Services, Community Based Services.

Services are also provided for Sunshine Coast Hospital and Health Service patients at Noosa Private Hospital and Sunshine Coast University Private Hospital, in Birtinya

Exceptional future. Exceptional change. Exceptional care.

Sunshine Coast Hospital and Health Service (SCHHS) provides public healthcare to the people of south east Queensland, from Gympie in the north to Caloundra in the south, from the coast to the hinterland.

The region we serve has an exceptional future, with its population continuing to grow. So we are making exceptional changes to support this growth, including refurbishing existing facilities, and opening the new Sunshine Coast University Hospital in 2017.

Along with our exceptional people, our growing and improving facilities will help us continue our vision of exceptional care.