

COVID-19 Weekly Report

Report issued 20 September 2023

Data current as at 19 September 2023

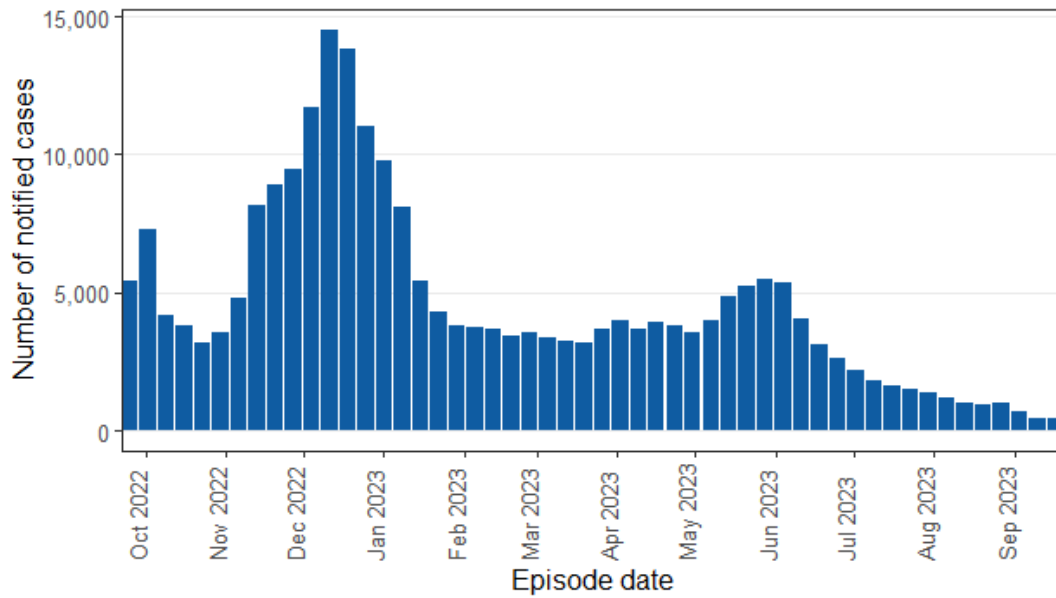


Figure 1. Queensland weekly COVID-19 notifications by episode date for the last 12 months.

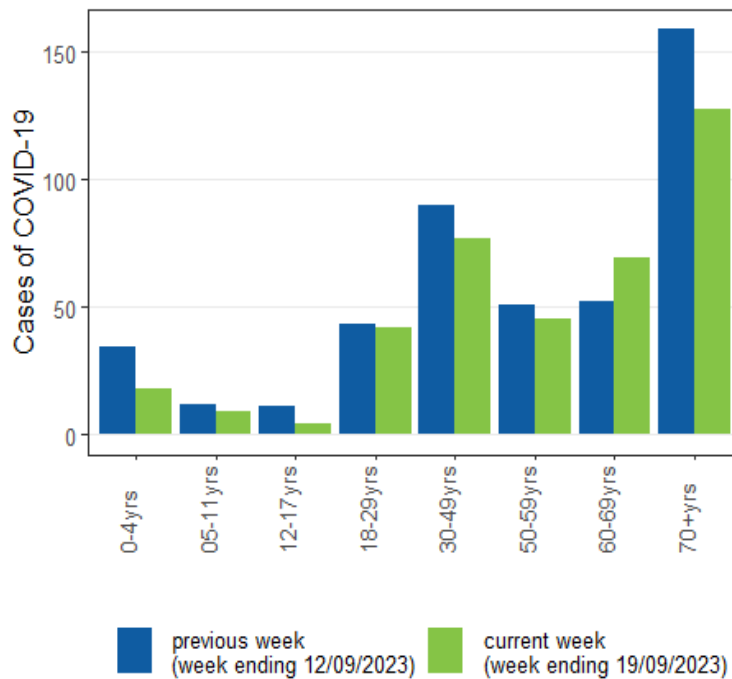


Figure 2. COVID-19 notifications by age group for the recent 2 weeks.

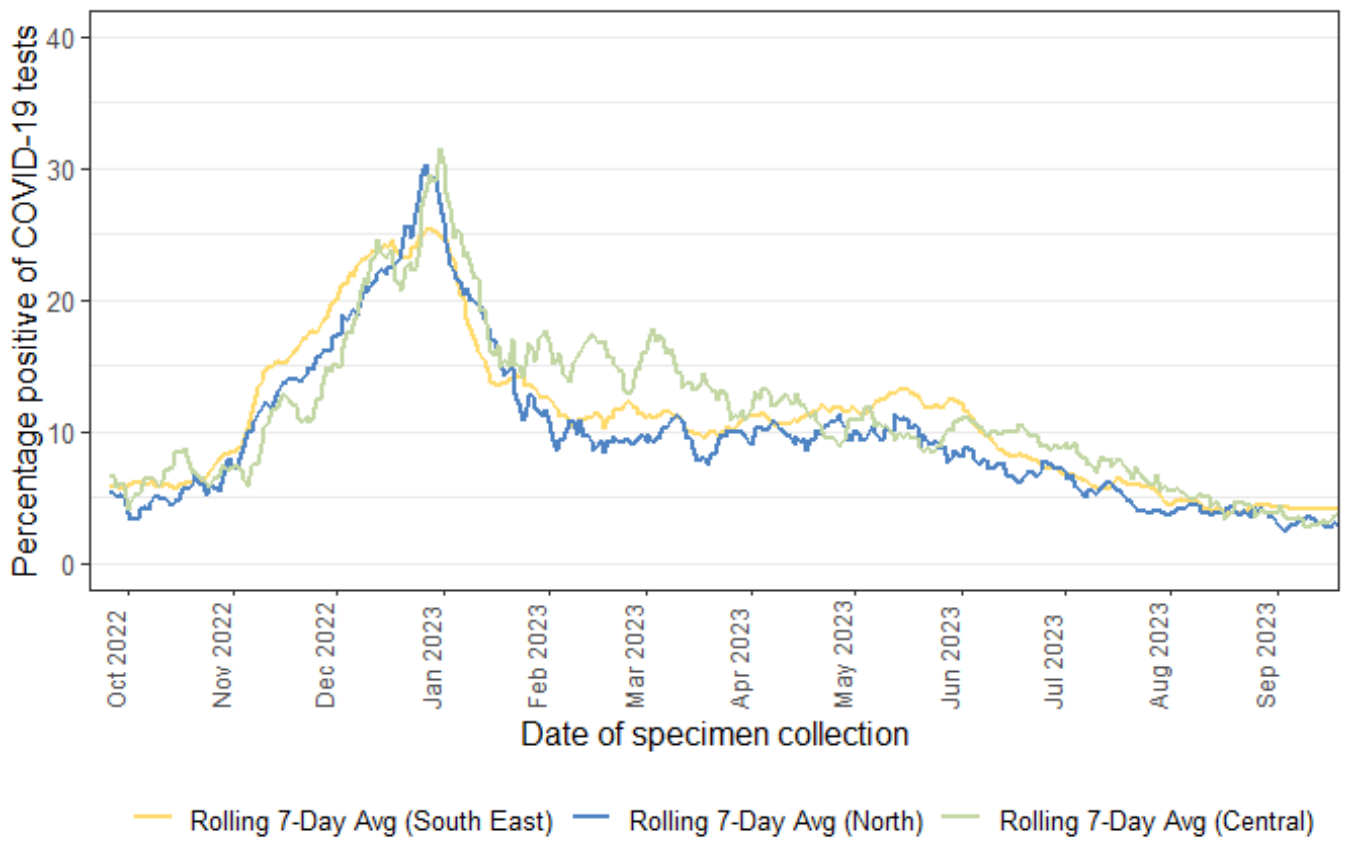


Figure 3. Percentage of positive COVID-19 PCR tests by region as a 7-day moving average for the last 12 months.

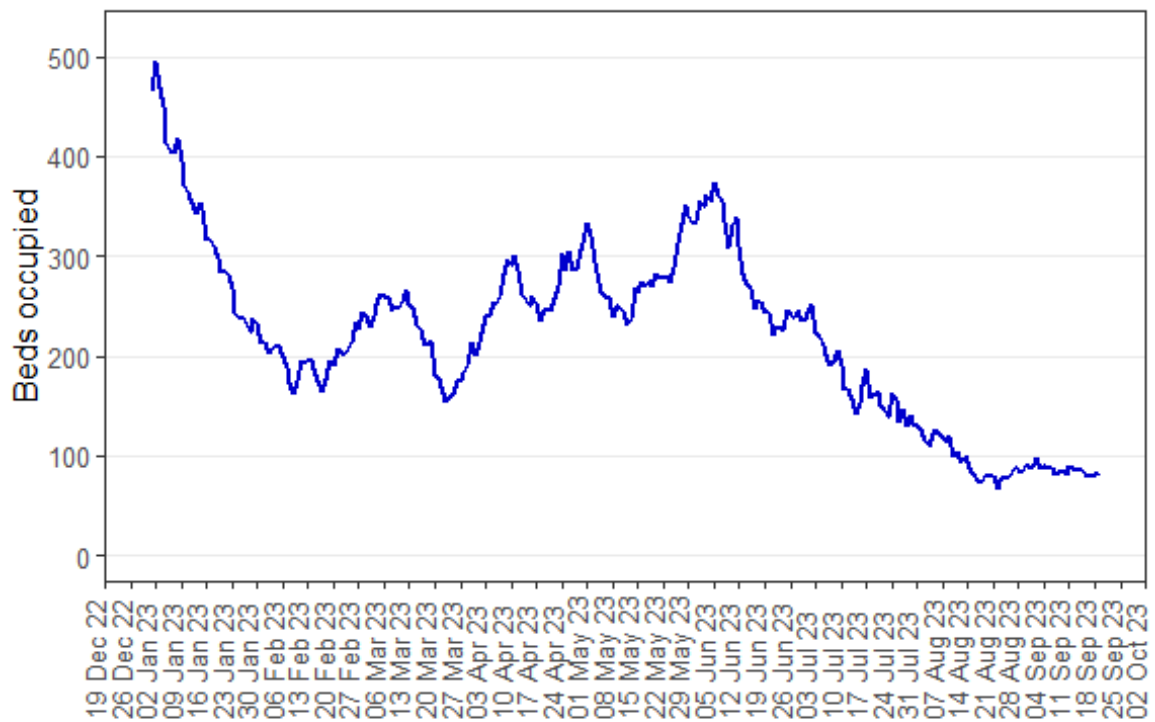


Figure 4. Total beds occupied by patients with COVID-19 in public hospitals by day, 1 January to 19 September 2023.

Appendix 1: General notes on the data and sources in this report

- The start date for this report is 1 January 2023. Where data for 2023 only is presented in a graph, weekly counts are shown by ISO week (international standard ISO 8601). The first ISO week comprises data from 2 January onwards. The ISO week date is calculated using the Notifiable Conditions System (NoCS) episode date, which is the earliest of the date of specimen collection and date of onset.
- This report includes notifications for Queensland and overseas residents diagnosed with COVID-19 in Queensland. Interstate residents diagnosed in Queensland are excluded from this report.

Data sources

- **ePADT:** is the enterprise Patients, Admissions and Discharges and Transfers database used in Queensland to record and manage public hospitalisation data.
- **Notifiable Conditions System (NoCS):** fulfills the role of the Notifiable Conditions Register, legislated under the *Public Health Act* (2005).
- **AUSLAB:** is an integrated laboratory information system used in pathology, clinical measurements, forensics and public health laboratories.

Appendix 2: Definitions

- **Percentage of tests positive:** percentage of PCR tests conducted in Queensland public and private pathology laboratories that were positive. Data source: AUSLAB and private pathology laboratories.
- **Total bed occupancy:** is the total number of beds occupied by patients with an overnight stay of at least one night in a Queensland Health public hospital, with an episode date of COVID-19 either 14 days before their admission, or with an episode date while in hospital but up to 14 days following their admission. A count of beds occupied means that the same patient may be counted multiple times across different days. Data source: ePADT linked to NoCS.
- **Hospital and Health Service (HHS):** Queensland Health includes 16 HHSs, comprising 15 geographical areas and 1 statewide service (Children's Health Queensland). The regional summaries used in this report are aggregates of the 15 geographical HHSs and represent the location of usual residence of notified cases of COVID-19.
- **South East, Central and North Regions:** regions defined here are HHS's used for surveillance purposes only, and have been categorised to divide Queensland into the highly populated south east and two regional areas. They are not official geographical areas.

South East	Central	North
Sunshine Coast	Central Queensland	Torres and Cape
Metro North	Central West	Cairns and Hinterland
Metro South	Wide Bay	North West
Darling Downs	South West	Townsville
West Moreton		Mackay
Gold Coast		