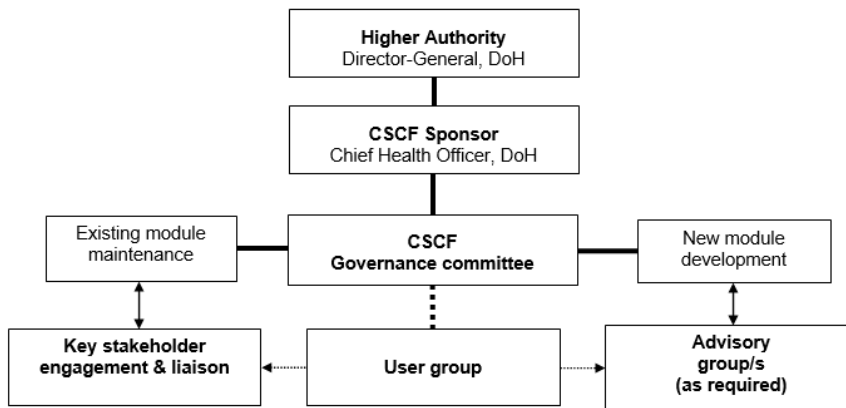


Clinical Services Capability Framework

Fact sheet 1 – Governance arrangements

The Queensland Clinical Services Capability Framework (CSCF) for public and licensed private health facilities¹ governance arrangements are detailed below.



Level	Body	Roles and Responsibilities
Strategic	Governance Committee	<ul style="list-style-type: none"> Provide governance oversight ensuring the CSCF is maintained in line with current legislative, policy and clinical practice direction. Represent public and private hospital stakeholders by actively contributing to committee decision-making and share committee decisions with areas represented. Consider suggestions for improvement of the CSCF. Make recommendation/s to the DG, DoH on future amendments to, and/or development of CSCF modules.
Operational	User group	<ul style="list-style-type: none"> Bring CSCF issues requiring clarification, discussion and/or resolution to meetings on behalf of public and licenced private hospital stakeholders. Recommend potential CSCF amendment/s and/or development of new CSCF modules to governance committee. Monitor and provide advice on CSCF risks, escalating unresolved matters to governance committee as required. Identify required educational material and contribute to its development.
Advisory	Key stakeholders	<ul style="list-style-type: none"> Provide expert advice on further enhancement of existing CSCF module/s. Comment on suggestions for module improvement.

¹ As updated from time to time

Level	Body	Roles and Responsibilities
	Advisory group/s	<ul style="list-style-type: none"> • Provide expert advice on development of new CSCF module/s. • Represent stakeholder groups required to use new CSCF module.