

What is the Patient Travel Subsidy Scheme (PTSS)?

The PTSS provides financial help for patients who need to get medical treatment which is not available in their local community.



Patients can apply for financial help with travel and/or accommodation costs. Patients who need help when travelling can also apply for someone to travel with them (a patient escort). The PTSS does not cover the full costs of travelling.

Check with your health service to see if you can get support from PTSS.

What support can I get?

Support to help cover the costs of travel and accommodation is available for patients and, if approved for someone travelling with them.

This can include the cost of air, bus, ferry or train tickets, or the cost of driving your own car.



full cost
is covered



\$0.34 per km
is covered

If the patient has to be away from home, if approved, you can get support to help with the cost of accommodation. This can include a hotel or motel, or someone's home.

Support for each approved person



\$70 a night



\$10 a night

For more information, please visit

www.health.qld.gov.au/ptss

or call 13 43 25 84 (or in some areas 13 43 25).

You can also get more information from your local health clinic.

My PTSS ID is:

My local hospital or health facility is:

Their phone number is:

My health worker or doctor is:

Do you need to travel to a health service?

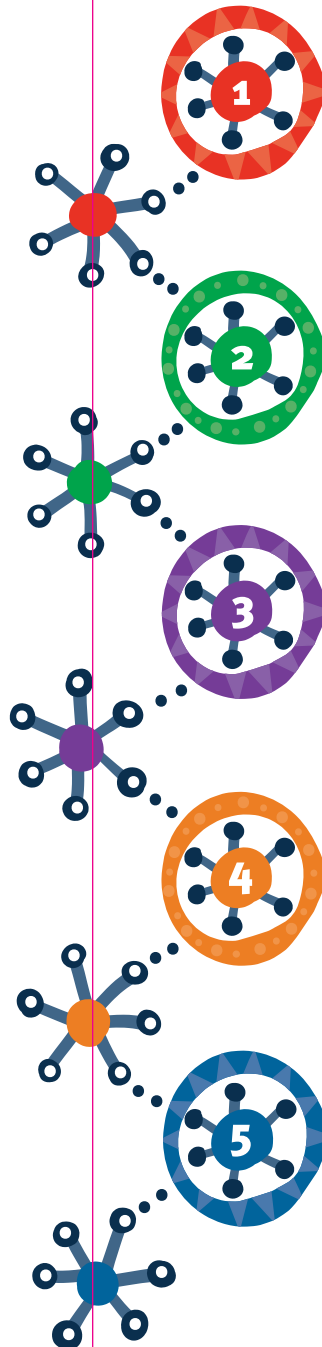
If you have been told you need to go to a medical service outside of your community, you may be able to get some financial help through the Patient Travel Subsidy Scheme (PTSS).



**Queensland
Government**

How we can support you if you need to travel for health reasons?

If you need to travel to a health service outside of your community, you may be able to get some financial help from the Patient Travel Subsidy Scheme (PTSS). Patients, and those helping them, can follow the 5 steps to find out what you need to do.

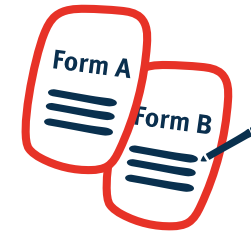


Applying

The patient and/or health worker need to fill out:

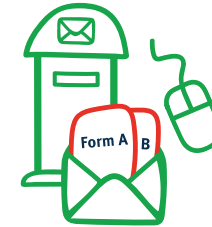
- **Form A** (PTSS Patient Registration), and
- **Form B** (PTSS Travel Referral).

These forms let them apply for financial help to cover the cost of your travel and accommodation, and if approved for someone to travel with you.



Checking

Your application will be checked, and we will let you know what financial support you will receive.



Booking

Once you have your appointment date, you should contact your local public hospital or public health service about travel bookings.

If you are booking your own travel or accommodation, make sure you keep all of your tax invoices.



Attending

When you have your appointment, make sure **Form C** (PTSS Appointment Attendance) is filled out and signed by the specialist or someone else at the service.



Receiving Payment

If you have a subsidy claim, you need to submit **Form C** (the signed PTSS Appointment Attendance), along with any tax invoices from travel and accommodation bookings.

You should receive your payment within 30 business days.

