



**Queensland
Government**
Queensland Health

Areas of largest growth in same day care in Queensland hospitals, 1995/96 to 2007/08

Paul Fahey, Trisha Johnston, Rachael Wills
Health Statistics Centre, Queensland Health

This report describes aspects of growth in same day care in Queensland acute hospitals over the past 13 years. This information was obtained from the Queensland Hospital Admitted Patient Data Collection (QHAPDC).

Figure 1 shows that same day care has grown most strongly in private hospitals in Queensland. In 2007/08, the total number of same day episodes in private hospitals was 1.3 times the number of same day episodes in public and 1.9 times the number of overnight stays in private hospitals.

Looking at same day care in private hospitals in more detail, Figure 2 shows the number of episodes categorised into Major Diagnostic Categories (MDCs). It shows that the main growth in same day care in private hospitals over the past 13 years occurred in Diseases and Disorders of the Digestive System (MDC 06), Diseases and Disorders of the Kidney and Urinary Tract (MDC 11), Neoplastic Disorders (MDC 17) and Diseases and Disorders of the Eye (MDC 02). The equivalent breakdown for public hospitals (Figure 3) shows that the only significant growth in same day episodes in public hospitals since 1995/96 occurred within Diseases and Disorders of the Kidney and Urinary Tract (MDC 11).

We can drill down into these MDCs using Diagnosis Related Groups (DRGs). Figure 4 shows the number of same day episodes for selected groupings of DRGs within each MDC. The results confirm that the main growth areas in same day care in private hospitals are gastroscopy (MDC 06), colonoscopy (MDC 06), renal dialysis (MDC 11), chemotherapy (MDC 17) and lens replacement (MDC 02). In public hospitals, the main expansion in same day care is in renal dialysis.

Some of the increase in same day care in private hospitals is likely to be related to the increase in the number of private hospitals in Queensland with 35 additional private hospitals in 2007/08 compared with 1995/96. In contrast, there was a decrease of three acute public hospitals over the same time period. Also, it is possible that the classification of some procedures may have changed from same day to non-admitted, but this is beyond the scope of this study.

Figure 1. Numbers of same day and overnight hospital stays in Queensland public and private hospitals, 1995/96 to 2007/08.

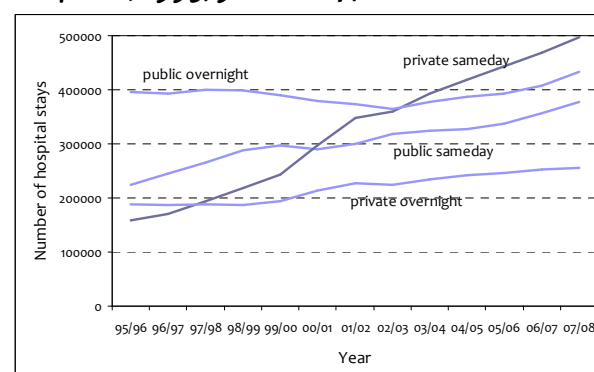


Figure 2. Major diagnostic categories of same day stays in Queensland private hospitals, 1995/96 to 2007/08

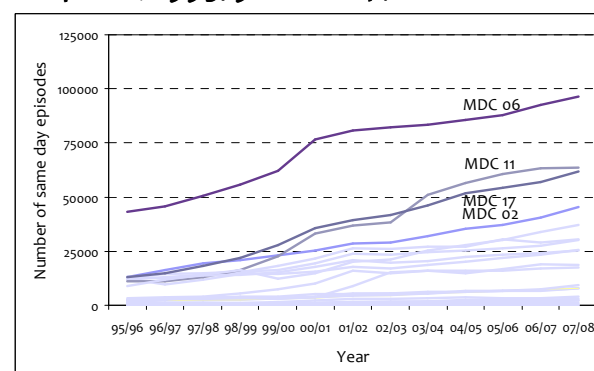


Figure 3. Major diagnostic categories of same day stays in Queensland public hospitals, 1995/96 to 2007/08

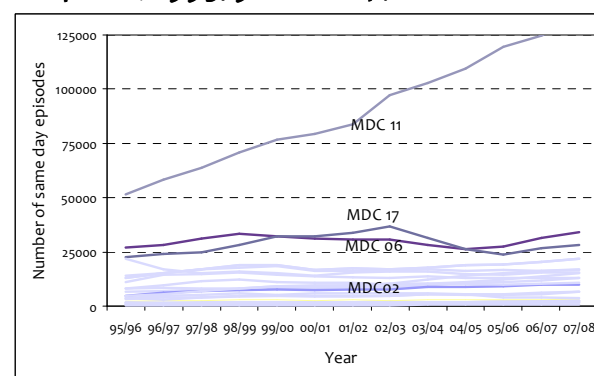


Figure 4. DRG-based breakdown of the same day care in Queensland public and private hospitals for selected MDCs, 1995/96 to 2007/08.

