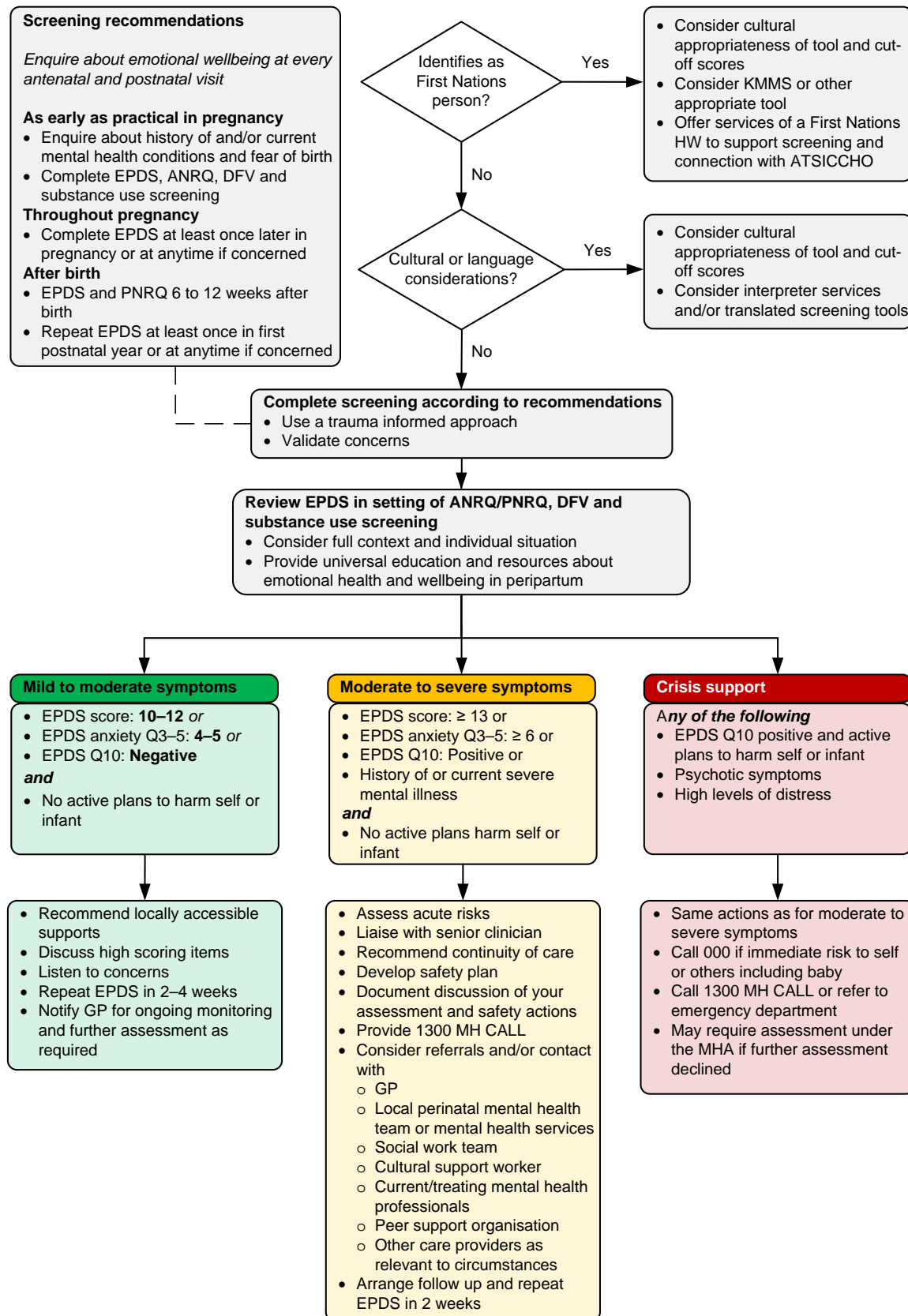


# Screening recommendations for women in the perinatal period



State of Queensland (Queensland Health) 2024  
<https://creativecommons.org/licenses/by-nc-nd/4.0/health> Queensland Clinical Guidelines, [Guidelines@health.qld.gov.au](mailto:Guidelines@health.qld.gov.au)



**1300 MH CALL:** 1300 642 255 (Queensland mental health access line); **ANRQ:** Antenatal Risk Questionnaire; **ATSIICHO:** Aboriginal and Torres Strait Islander community controlled health organisation; **DFV:** domestic and family violence; **EPDS:** Edinburgh Postnatal Depression Scale; **GP:** general practitioner; **HW:** health worker; **KMMS:** Kimberley Mum's Mood Scale; **MHA:** Mental Health Act; **PNRQ:** Postnatal Risk Questionnaire; **Q:** question