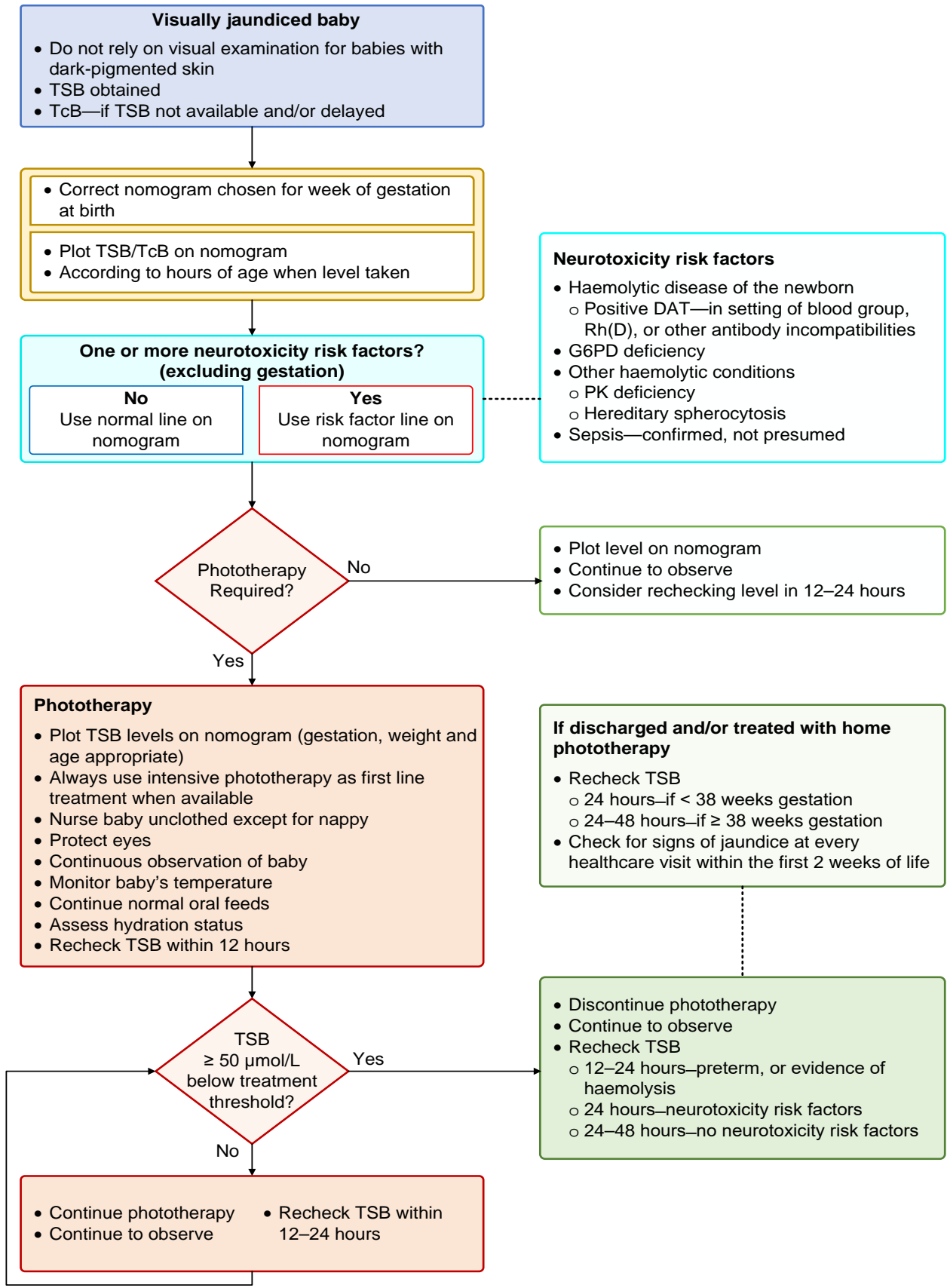


Guide to phototherapy



Abbreviations. DAT: direct antigen test; GA: gestational age; G6PD: glucose 6 dehydrogenase deficiency; g/L: grams per Litre; PK: pyruvate kinase; Rh D: Rh D blood type; TcB transcutaneous bilirubin; TSB total serum bilirubin; µmol/L: micromol per litre; ≥ greater than or equal to; < less than

State of Queensland (Queensland Health) 2025
<https://creativecommons.org/licenses/by-nc-nd/4.0/au/deed/en> Queensland Clinical Guidelines, Guidelines@health.qld.gov.au

