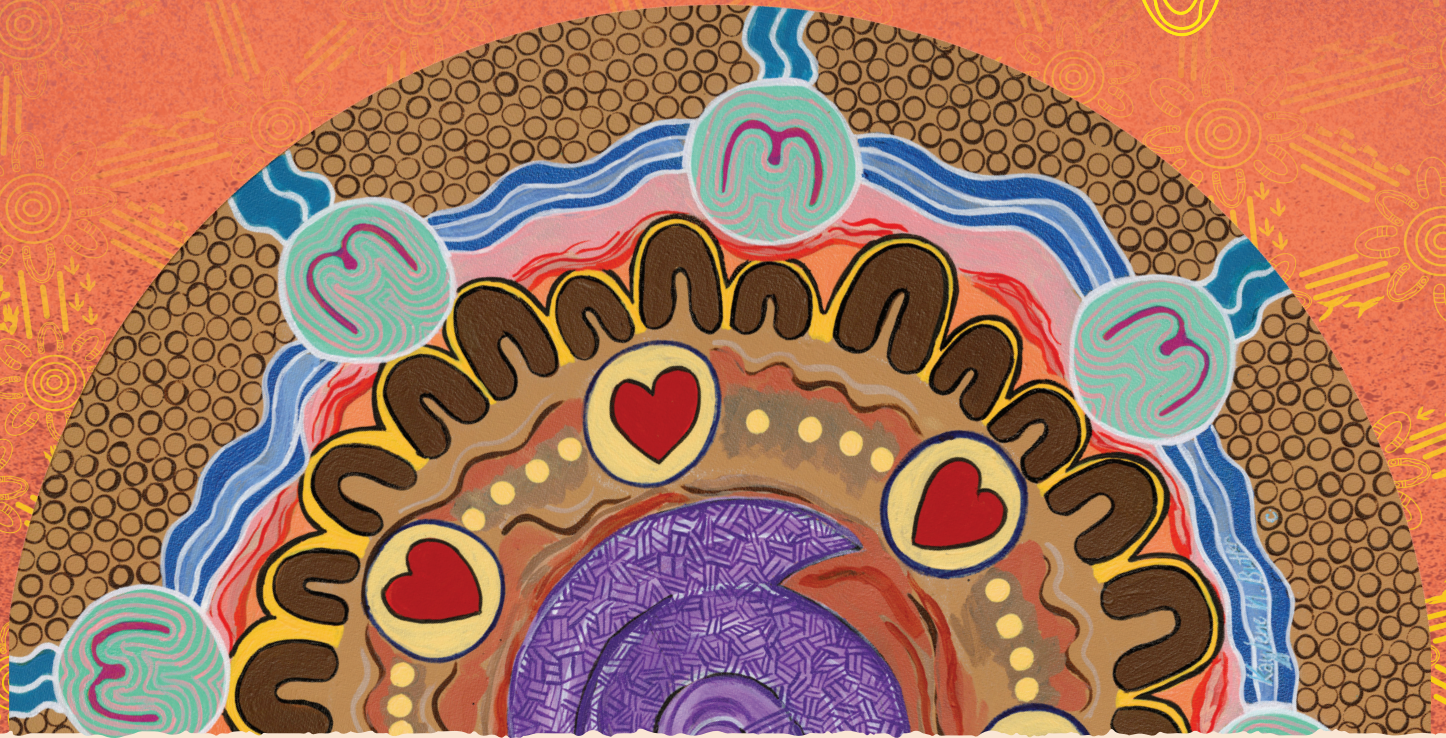


# Let's be Proud and Deadly

## Healthy Skin Strong Heart



### Aunty Kaylene Butler's artwork story

*Iman/Gungarri, South Sea Islander (Tanna and Gaua Islands, The Banks) and 5th generation Chinese Fuzhou Shiqu (Fujian China)*

Centrally I have placed a cultural symbol and line work representing land ownership and Country. Belonging to and everything on it.

Purple, a strong positive colour representing being proud and caring for each other and strong kinship reach, draws the eye to the middle.

In the formation of the spiral shape the seasons of life, and a cultural way of telling time, now and the future, are represented.

This captures the experience of a young person growing into an Elder of the community, and the duties and responsibilities to be passed down, and the knowledge to nurture, care and educate - to live longer and to live stronger.

Community members know and are passionate about their Country. One thing that draws us to our own Countries is the connection to Country, meaning the colours of the landscape or seascapes, describing how we visualise the dirt that we make footprints on, our history and story songlines. I have chosen the ochre colours present in most of our landscapes, yellows, reds, browns, orange, through to pinks.

From the inside towards the out I have placed hearts celebrating a healthy heart. The circular journey of seven hearts, three dots in the middle, represents the journey of being healthy and to a strong heart, and the love we have for each other and our creator.

Coming together as ONE community. The circular gathering of Elders, and children is structured to display the concept of Mob for Mob. The large 'U' shapes are the Elders, health workers, parents and the smaller 'U' shapes are, of course, children.

The yellow glow surrounding the community members is togetherness and walking together, pride in health, looking out for young ones, looking out for each other.

To practice health I show the waterways flowing, representing keeping clean and hygienically fresh throughout the circle. Smaller circles of a fresh mint colour contours tonsils that are pink and of good health.

On the outer circle are small brown circles depicting healthy skin cells of our people. The turquoise water way is freshness and hygienic living that will continuously rejuvenate for the future of good health in communities.



**BIDGERDII**  
COMMUNITY HEALTH SERVICE

**Central Queensland  
Hospital and Health Service**



**Queensland  
Government**