



Meet TD Pilot





TD Pilot provides communication and access to the iPadOS environment through eye gaze.

Who is TD Pilot designed for?



Apple OS User who now requires AAC

**Weighs
2Kg.**

**Front-facing
camera**

**Tobii Dynamox
Eye Tracker**



Apple, iPad, iPad Air, and iPad Pro are trademarks of Apple Inc., registered in the U.S. and other countries.



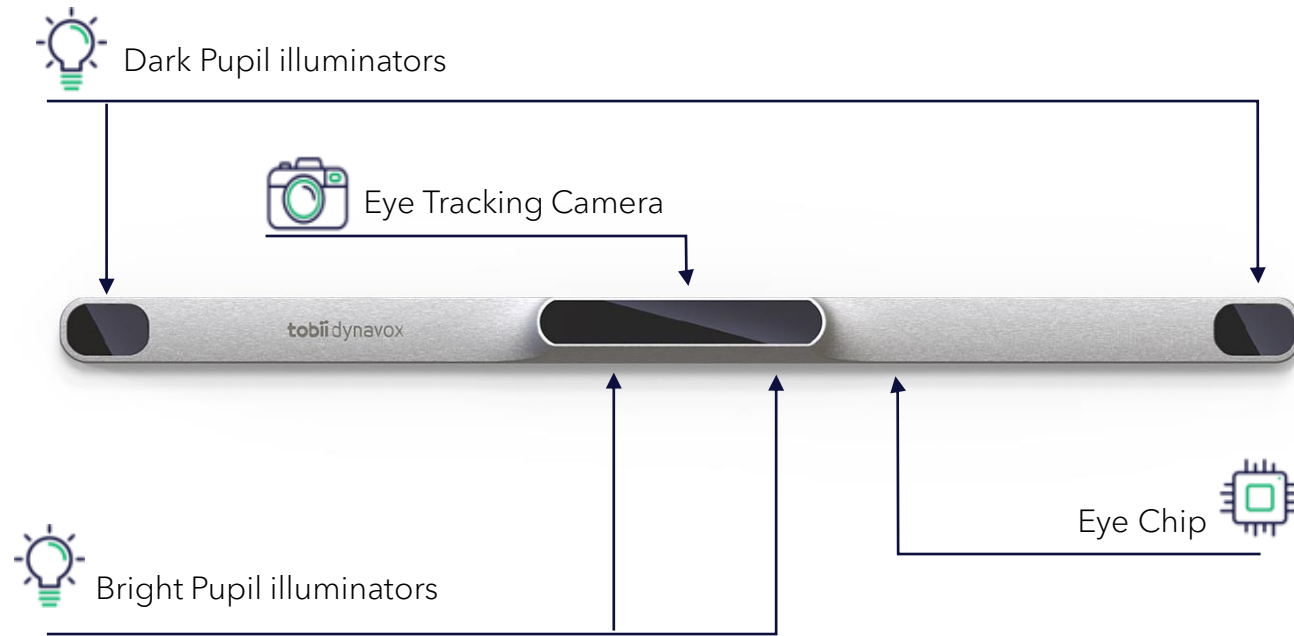
**Protective
case**

**Up to 10-hour
battery life**

**12.9-inch
display**

**First-ever Made
for iPadOS**

Be flexible!



- 2 x Dark Pupil illuminators
- 2 x Bright Pupil illuminators
- 1 x Eye Tracking Camera
- 1 x Eye Chip

Operating system to base connection

Switch ports for gaze + switch activation



**Power &
Track Status
buttons**

**Partner
window**

**ConnectIT
mounting
plate**

Adjustable stand



**Rear-facing
camera**

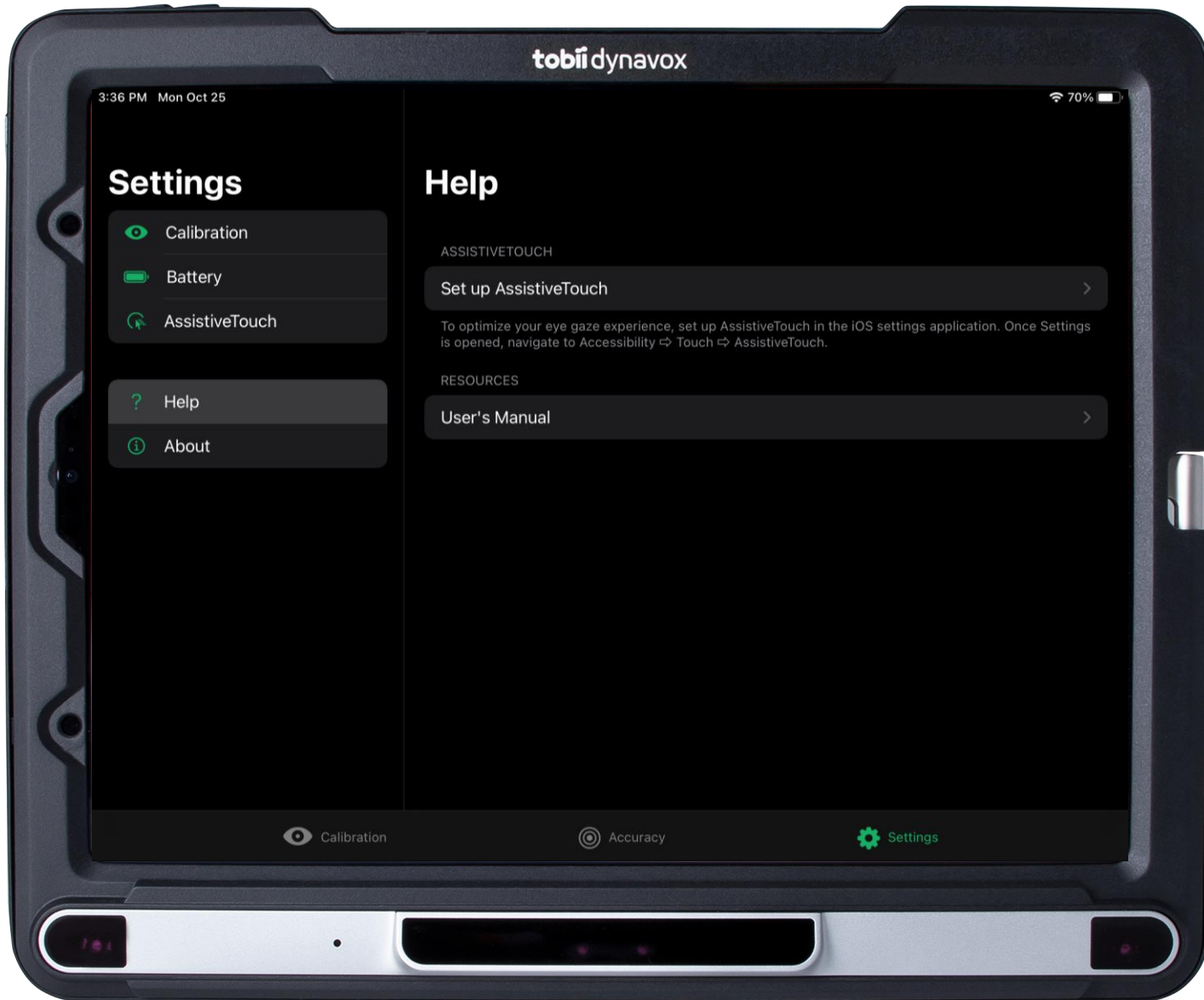
**Powerful
speakers**



Single charging port

Headphone jack



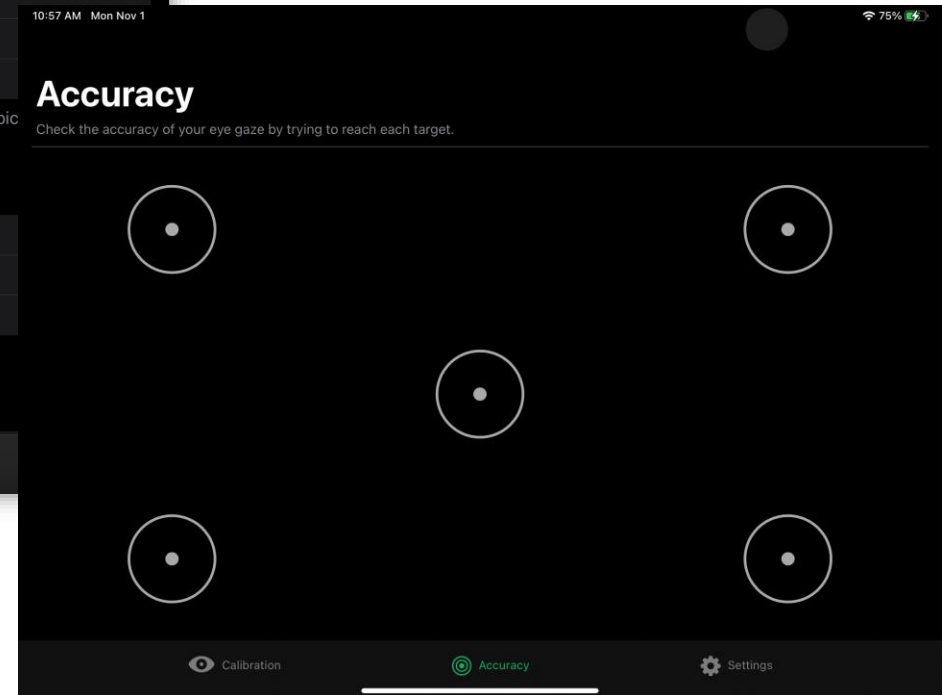
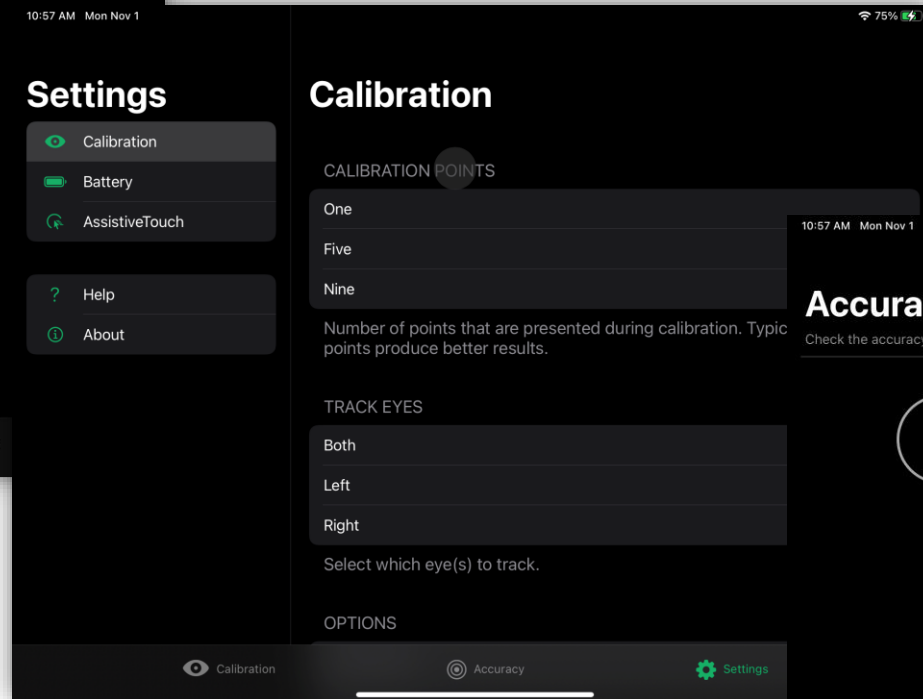
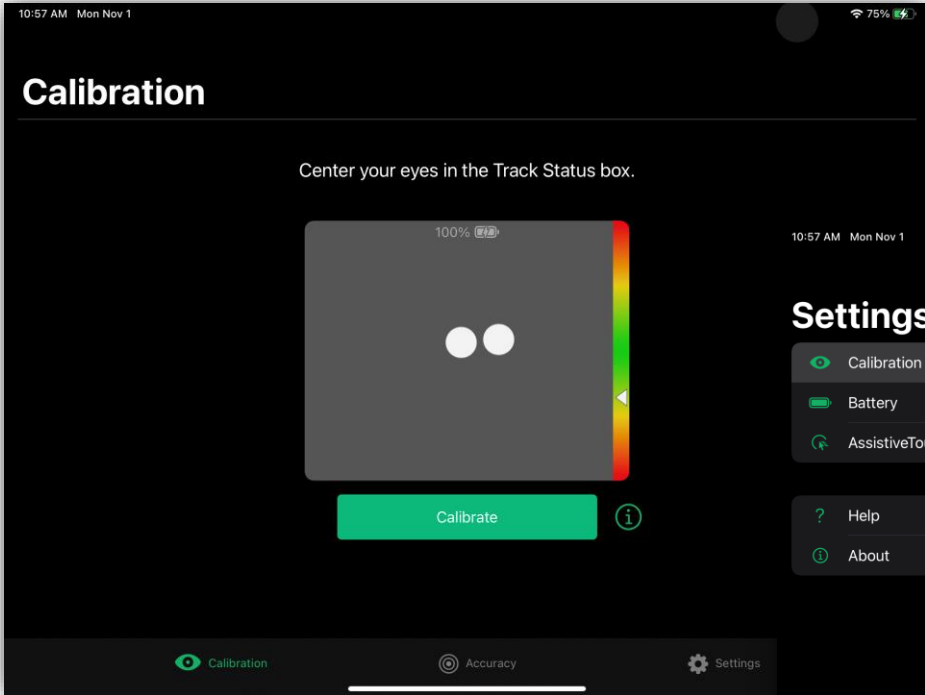


TD CoPilot

- Calibrate
- Check battery level
- Access the User Manual

See **inside**

CoPilot



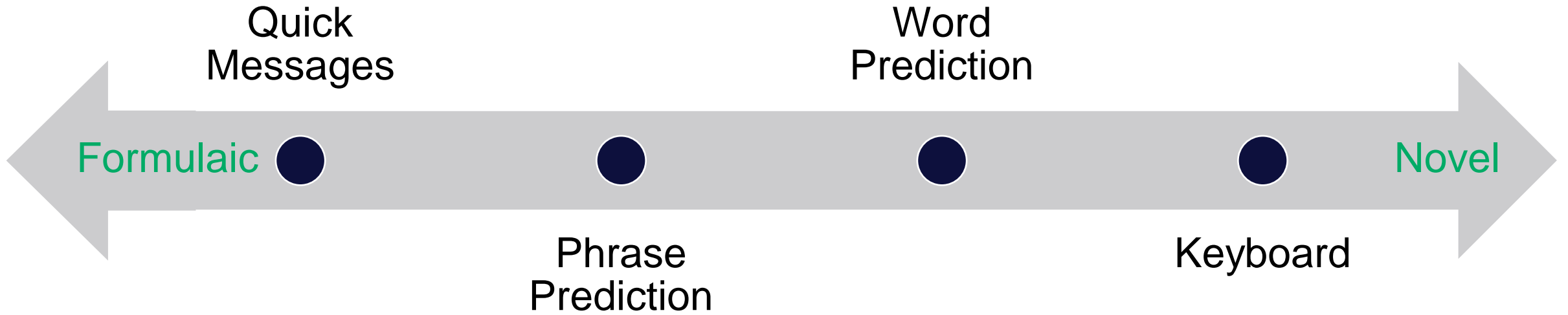


TD
Talk

TD
Snap

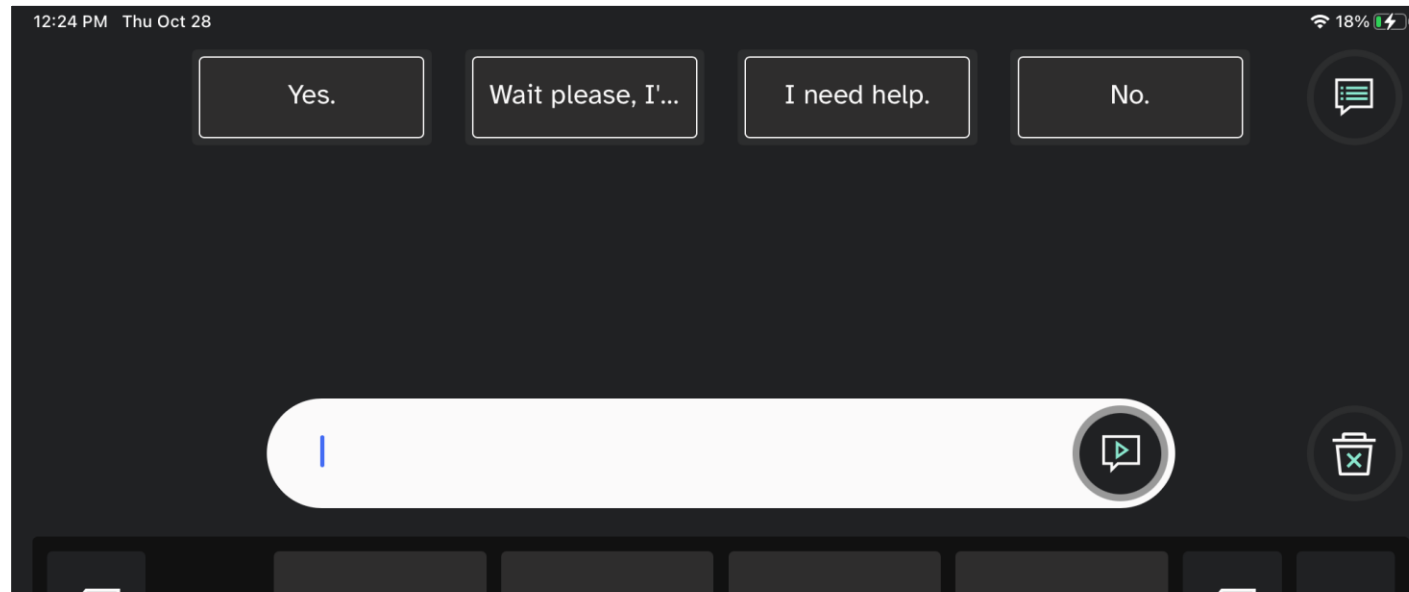
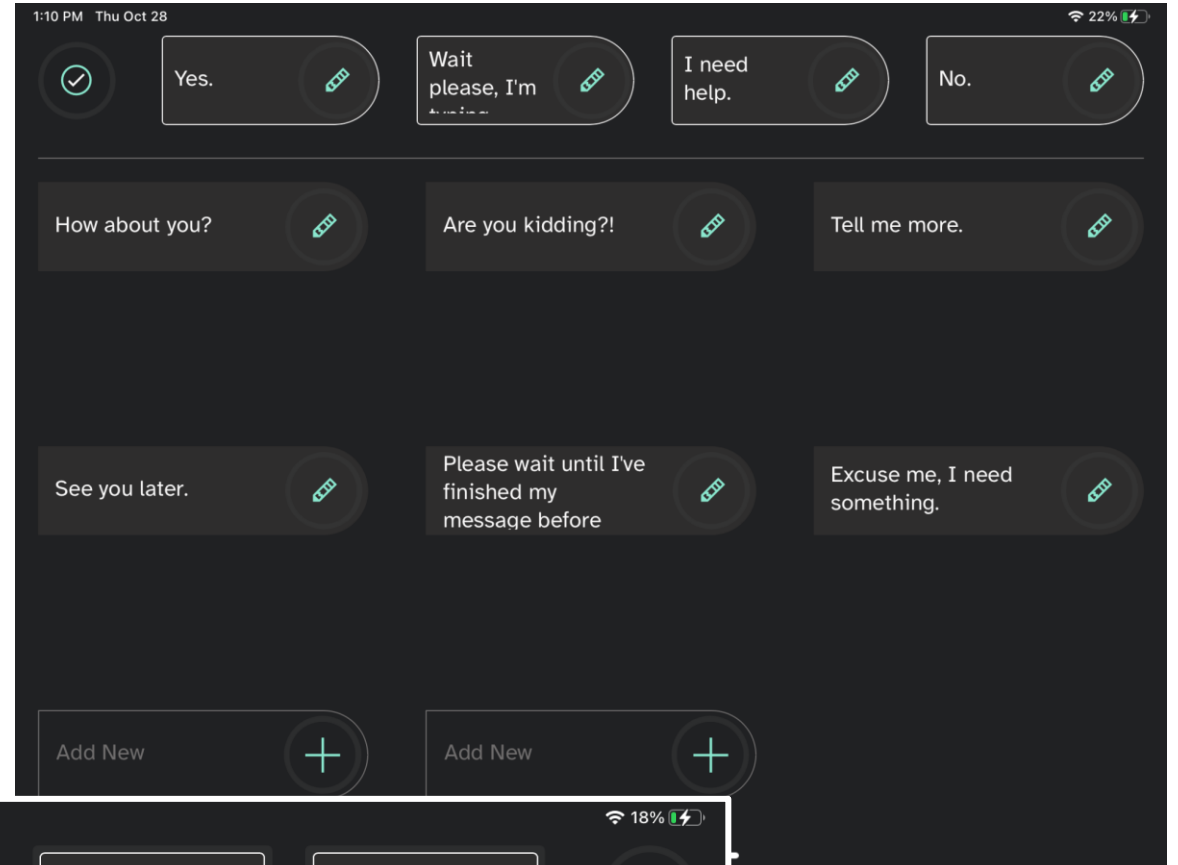


Fast

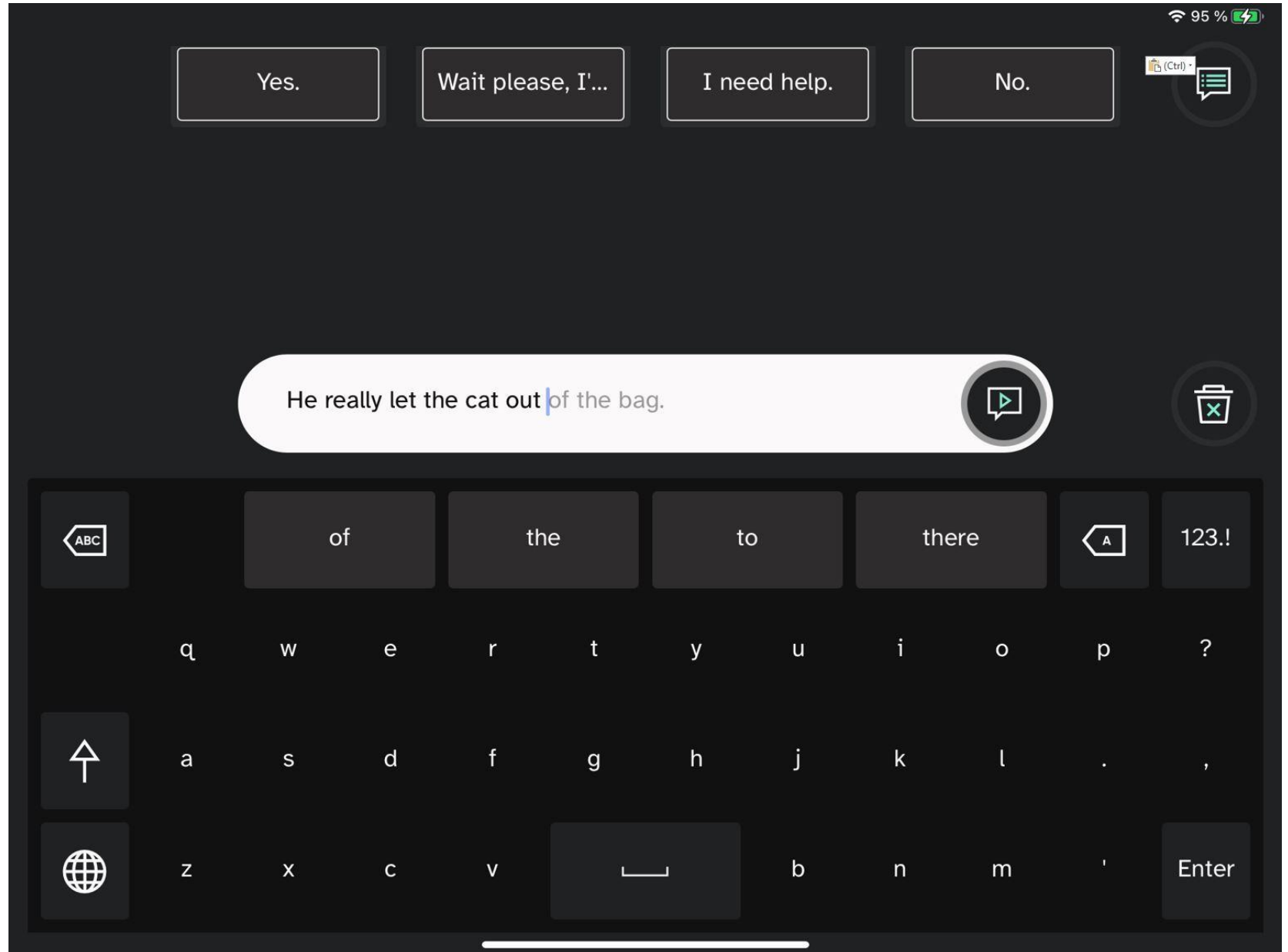


Fast Participation

Quick Messages



Fast Production *Word and Phrase Prediction*

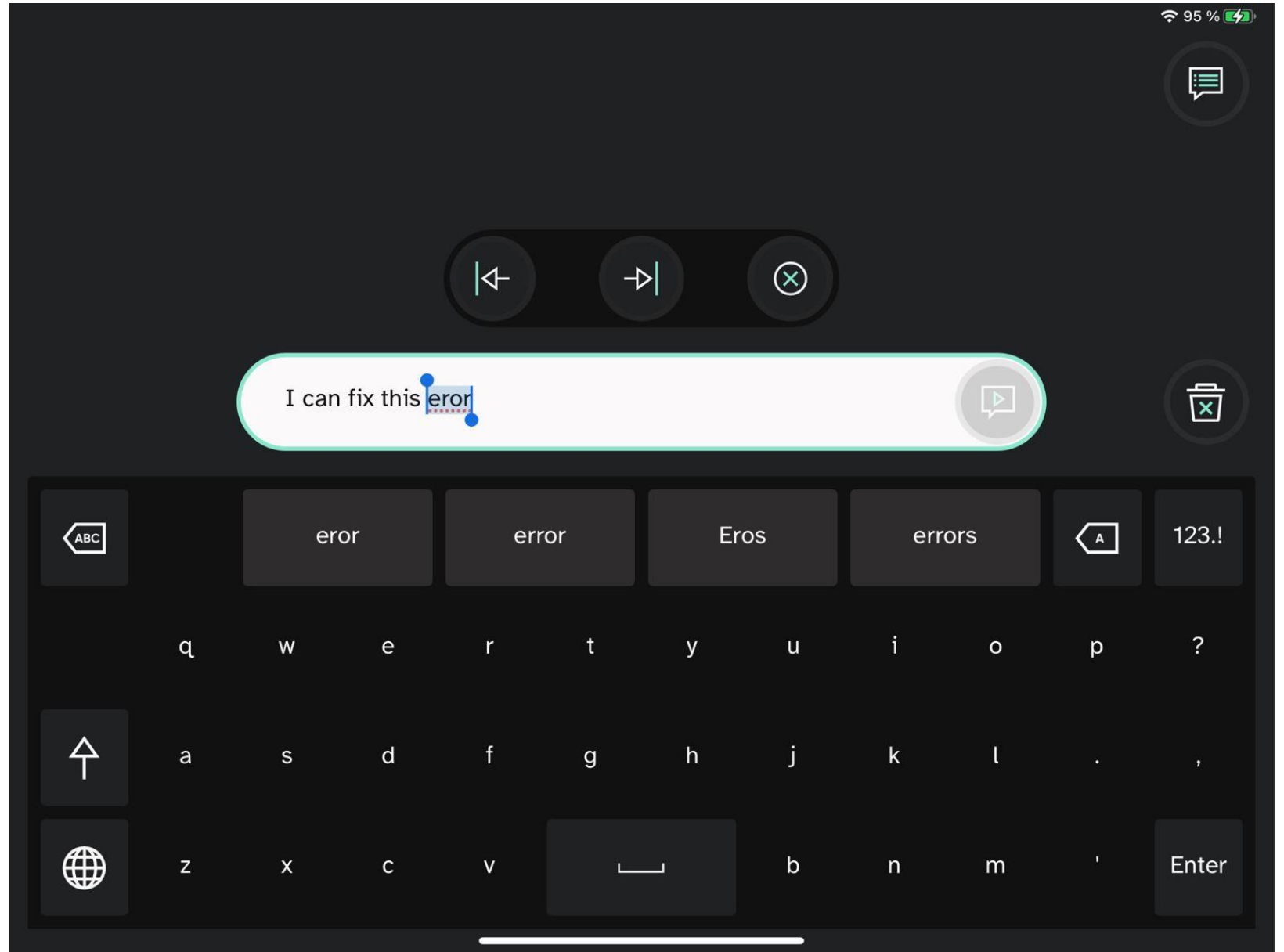
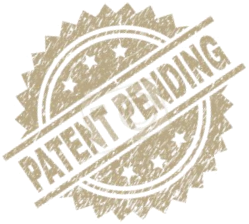


Sounds Like Me *Phrase Prediction*

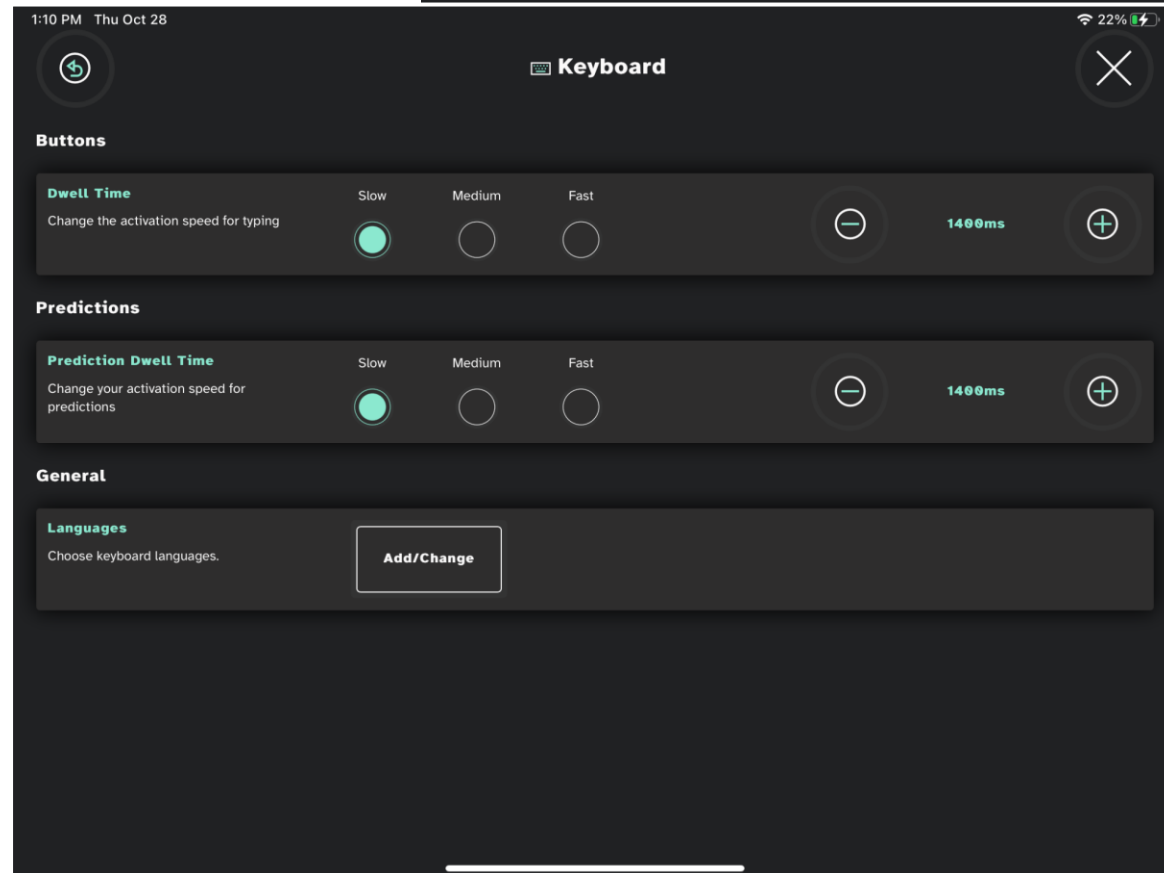
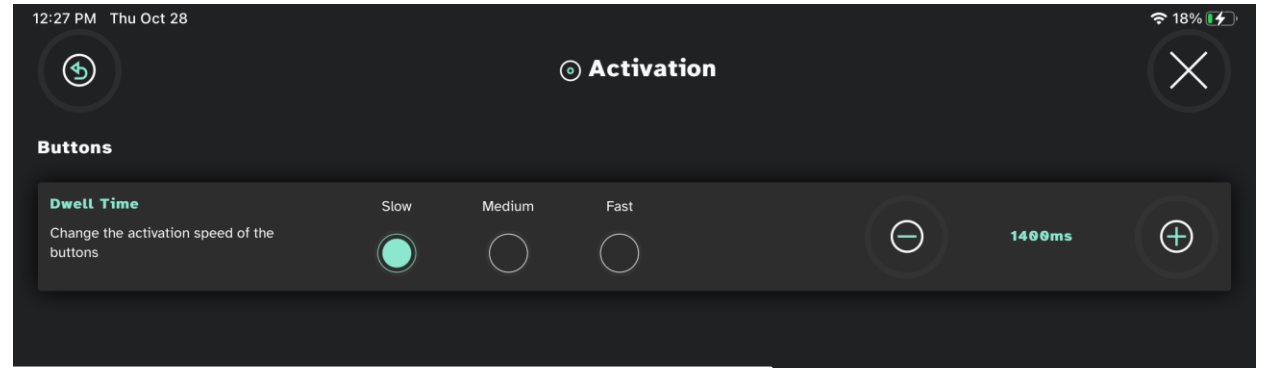


A screenshot of the Sounds Like Me app interface on a mobile device. At the top, there are four buttons: "Yes.", "Wait please, I...", "I need help.", and "No.". Below these is a text input field containing the sentence "My family is spread out all over the country." with a blue cursor under "over". To the right of the text field is a play button icon and a trash can icon. At the bottom, there is a keyboard with several words predicted above the keys: "the", "over", "of", and "day". The keyboard also includes standard keys like "ABC", "A", "123.!", "q", "w", "e", "r", "t", "y", "u", "i", "o", "p", "?", "a", "s", "d", "f", "g", "h", "j", "k", "l", ".", ",", "z", "x", "c", "v", "_", "b", "n", "m", "'", and "Enter". The top right corner of the screen shows a battery icon at 94% and a signal strength icon.

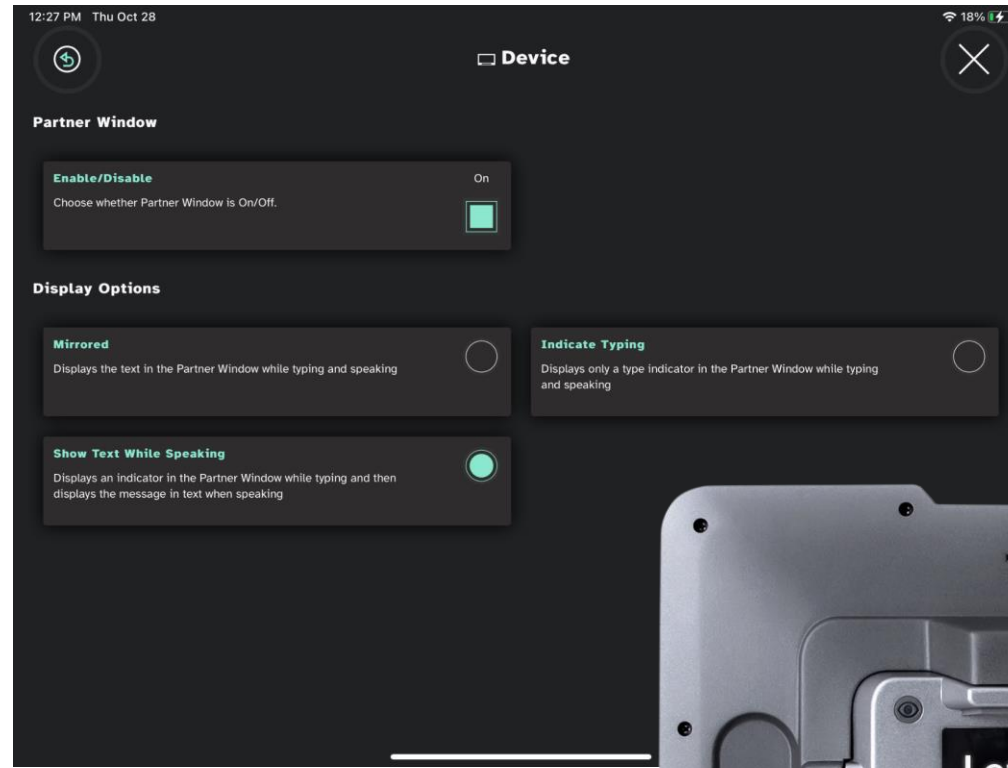
Fast Correction



Fast Production *Alternative Dwell Times*

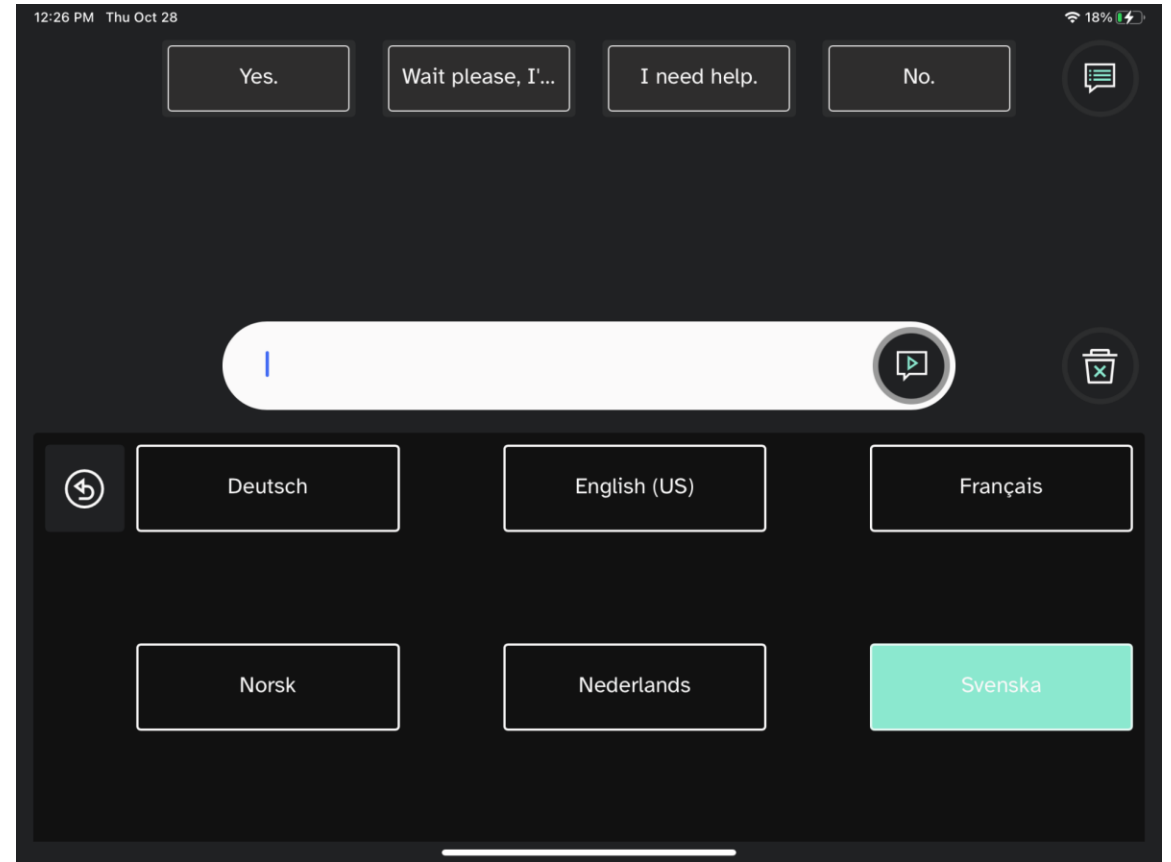
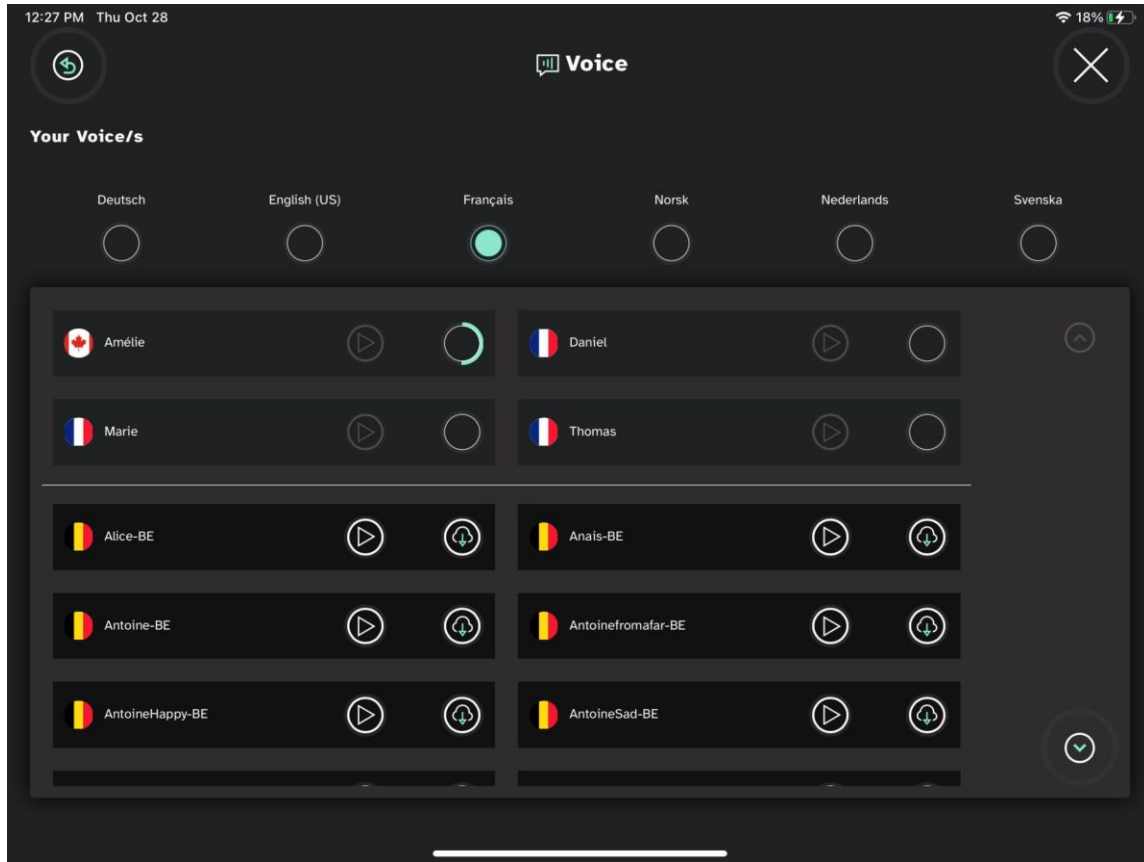


Fast Participation *Partner Window*



Sounds Like Me

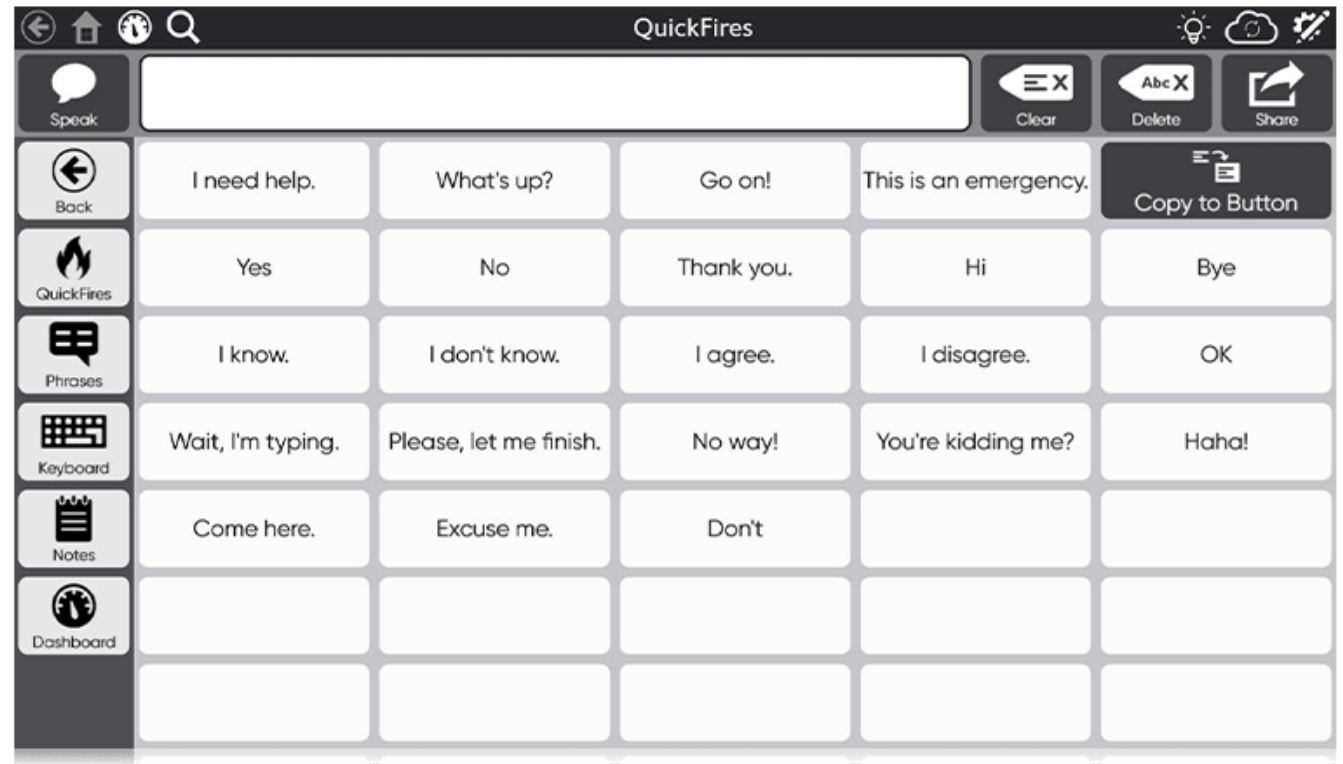
Voices and Languages



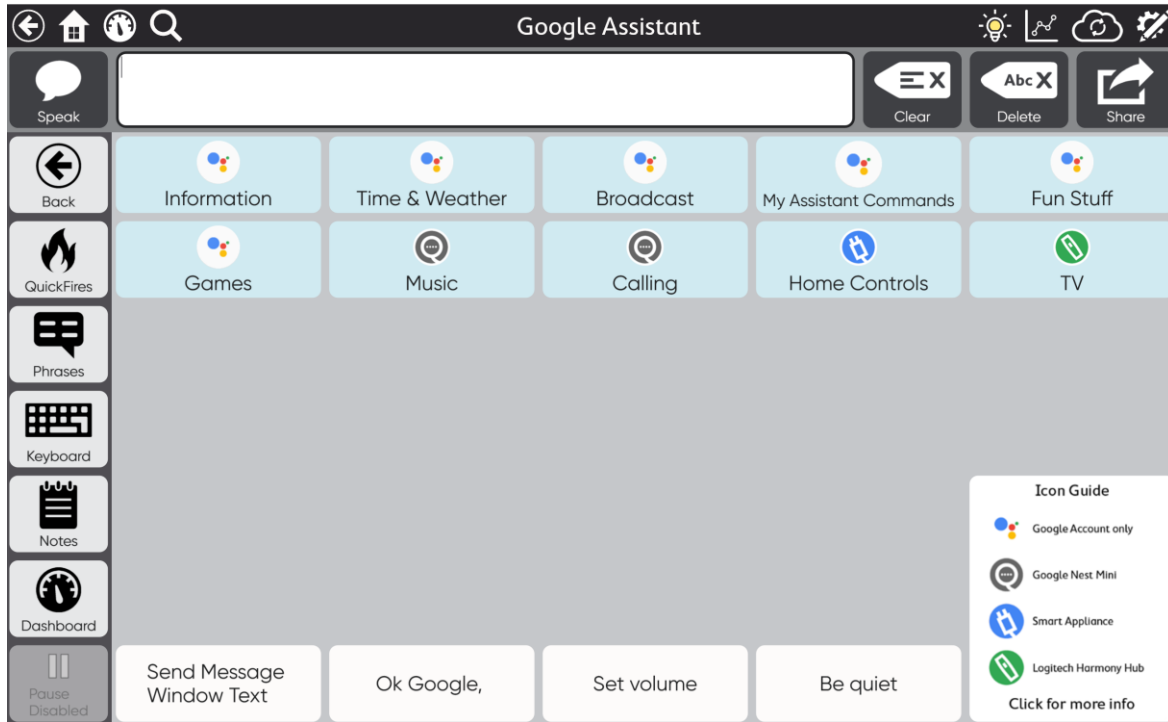


TD Snap: Text Based Page Set

- Designed for literate individuals who do not need symbols to support their communication
- Allows you to save phrases for efficient communication
- Easy for the user to save new messages for future use
- Choice of keyboard options
- Word prediction and editing tools embedded in the keyboard
- Pre-made pages for easy access to smart assistants (Google Home or Alexa)



Smart Assistants



TD Snap Message Banking

my tobii dynamox My Stuff Pageset Central Documentation Downloads

Message Bank Upload

Search

Show 20 ▾ No Filter ▾ Showing 1-20 of 600 Results 1 2 3 4 5 ...

Title	Text	Score	Recording	Tags
good-husband	You're a good husband	😊	▶ 0:02	+ compliment ✕ polite ✕
lets-eat	Let's get something to eat	😊	▶ 0:02	+ request ✕
need a drink	What do you have to drink?	😊	▶ 0:02	+ polite ✕ question ✕ request ✕
thanks	add	😊	▶ 0:01	+ polite ✕ response ✕
helpShopping	Please help me find what's on my shopping list	😊	▶ 0:03	+ help ✕ request ✕

Cancel Verified

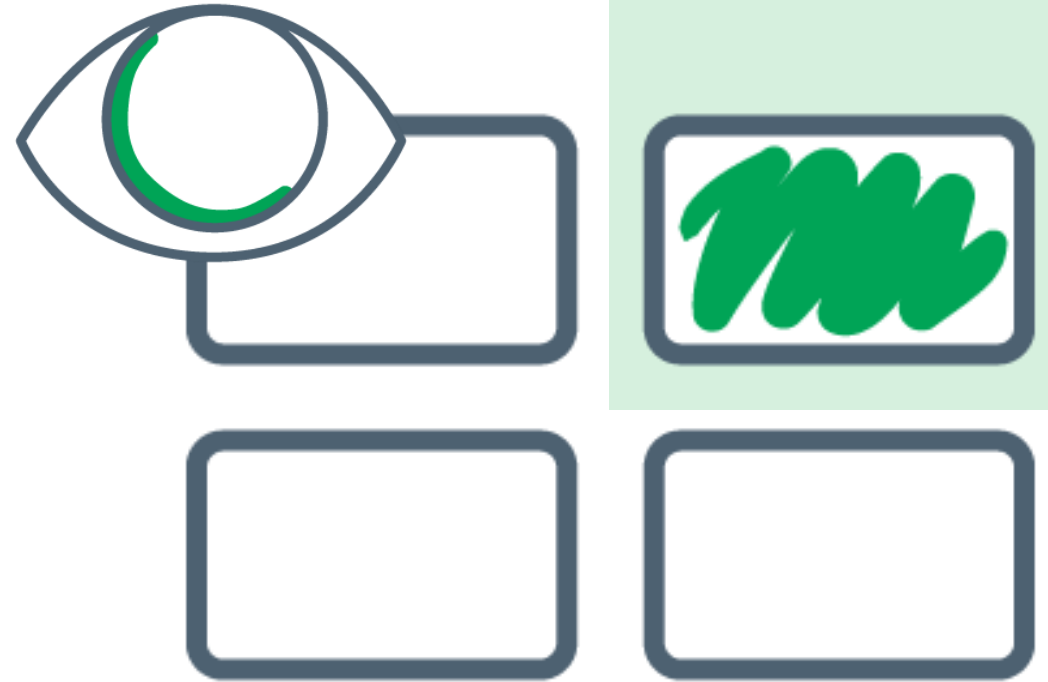
For step-by-step instructions
on recording, uploading, and
importing messages
into TD Snap

Scan QR code or [click here](#)



Region-Based Interaction

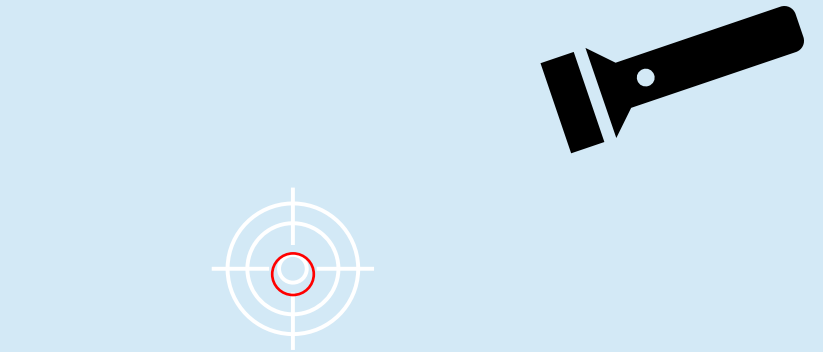
- Assigns larger target area to buttons
- Reads gaze anywhere within the target
- Improves precision and accuracy
- Reduces effort and stress



Important Note: Eye Gaze



Region Interaction in TD
Talk and TD Snap



Assistive Touch

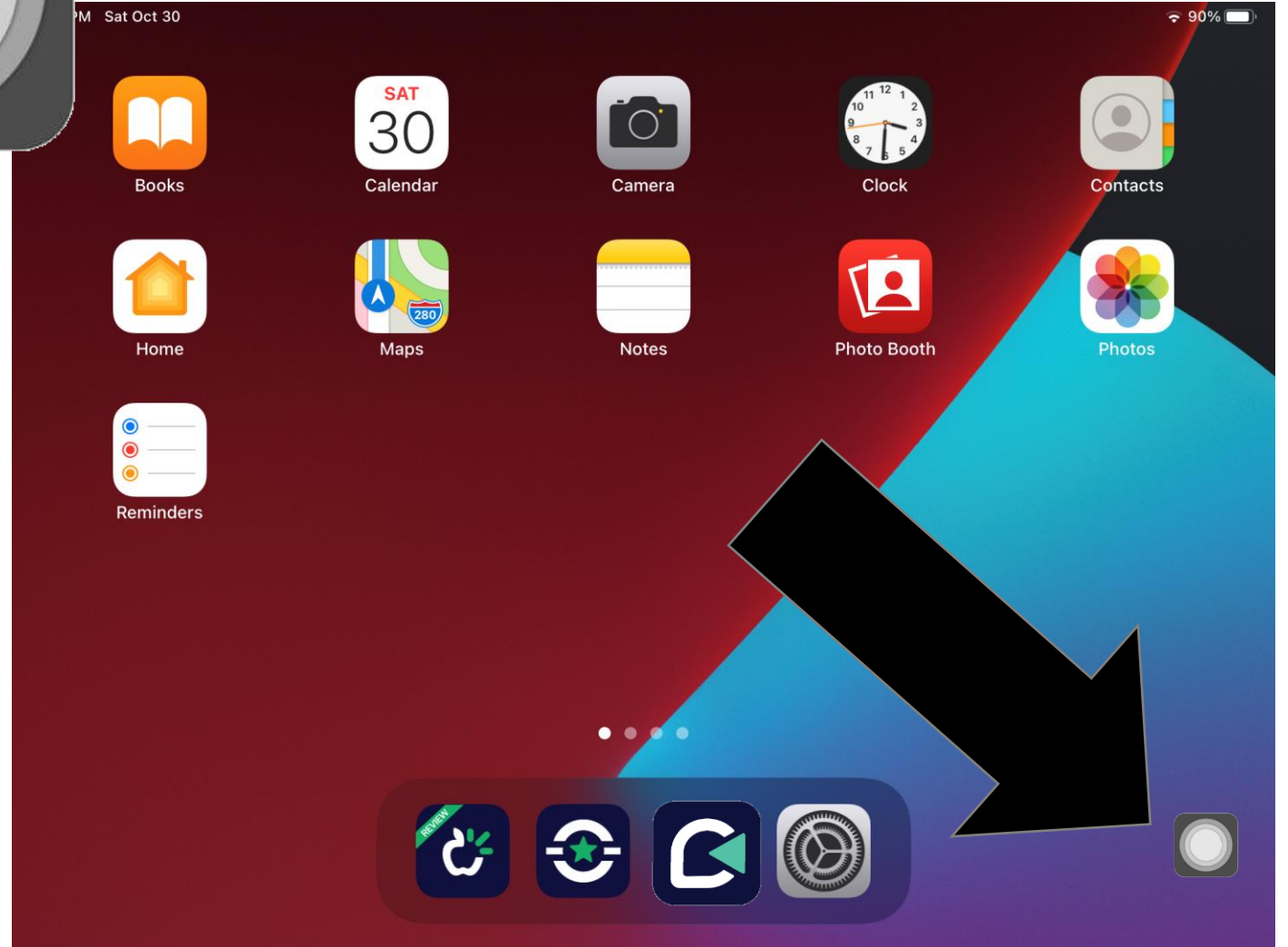
AssistiveTouch

- Enable through iPadOS settings menu
- Complete tap, scroll, and long hold gestures with eye gaze





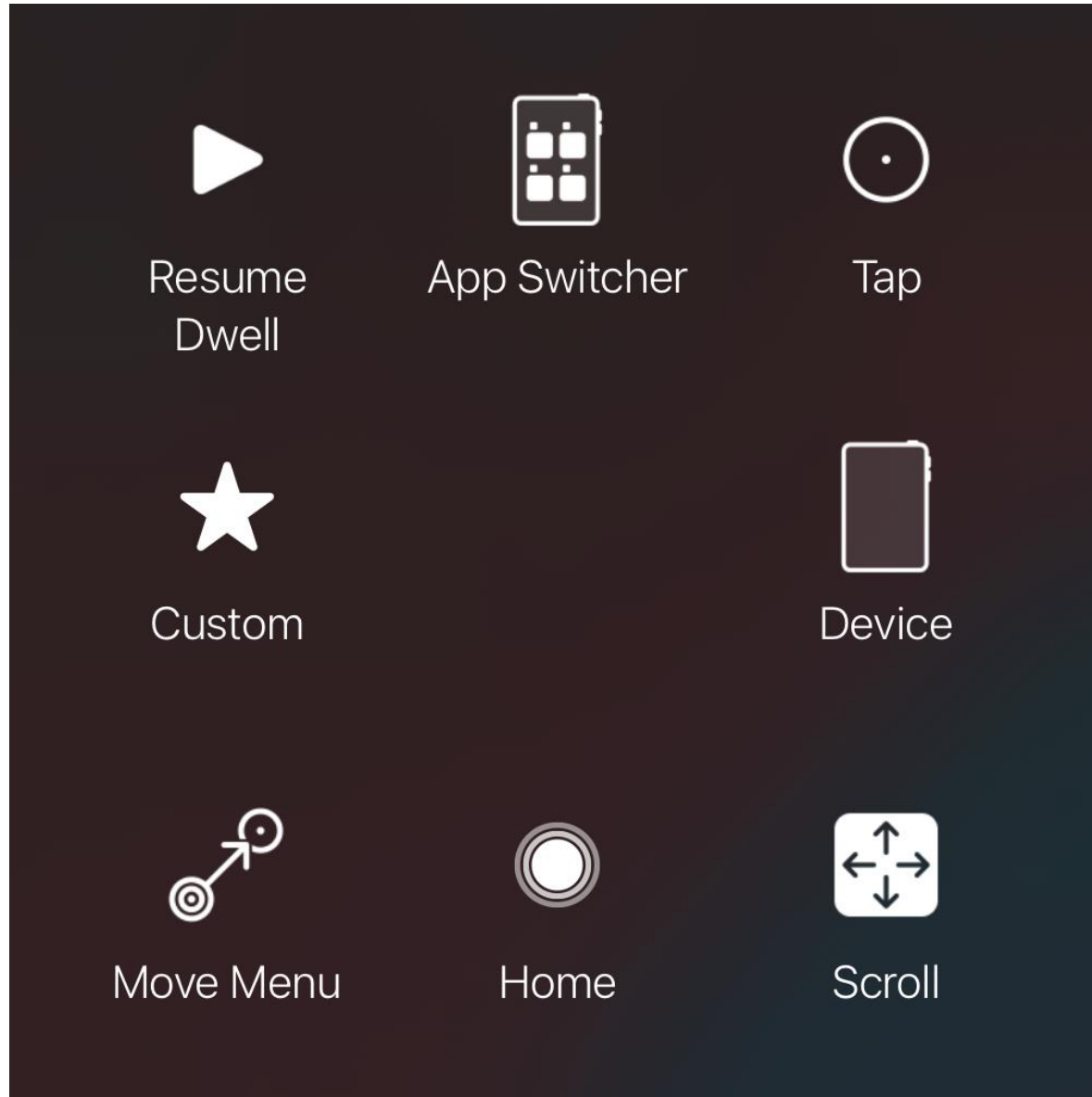
AssistiveTouch *Button*



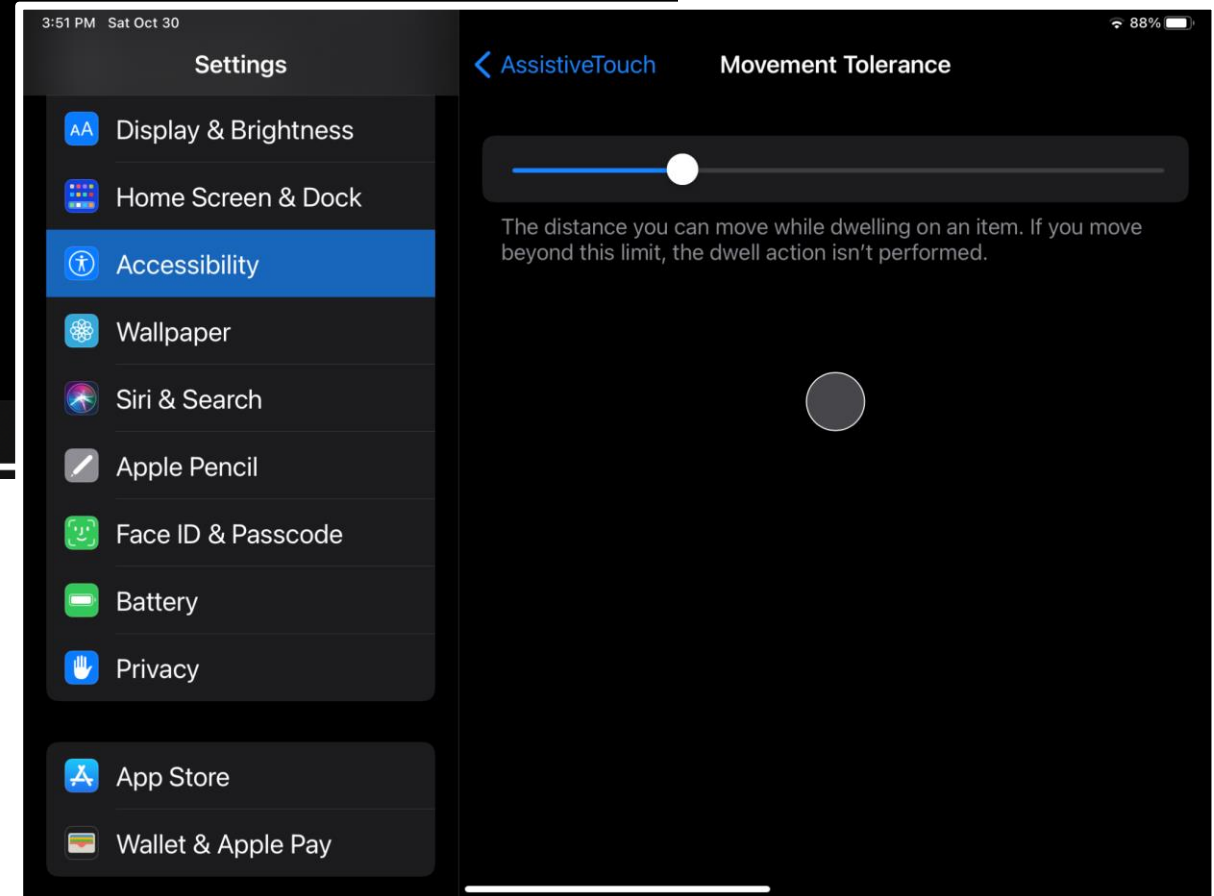
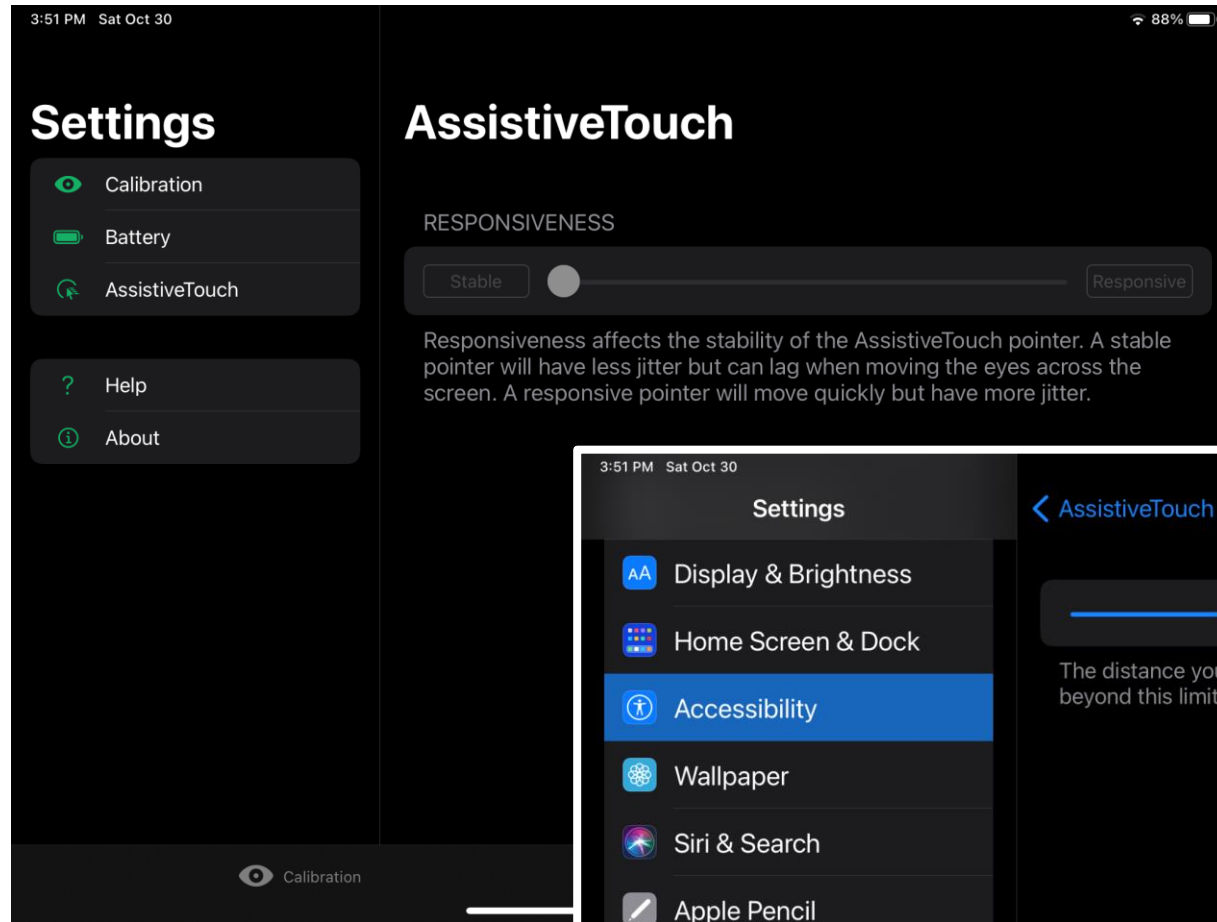
Assistive Touch *Menu*



Assistive Touch *Basic Functions*



AssistiveTouch *Refine Eye Tracking*



AssistiveTouch Refine Eye Tracking

tobii dynamox



TD Talk and AssistiveTouch

Training Cards

AssistiveTouch - Using Apps

When you are ready to venture outside of TD Talk, you'll use AssistiveTouch to access the other apps on your iPad. The AssistiveTouch eye gaze settings and behaviors are different from the ones in TD Talk, so you may need to make adjustments in the iPad OS Settings.

AssistiveTouch - Practice Ideas

Practice Idea
Turn on AssistiveTouch from TD Talk.



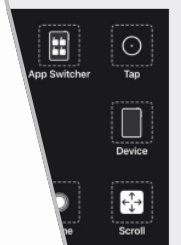
Practice n...
between...
the Home...
Assistive...

Try It
1 In TD Talk, look below the eye tracker to open the Off-Screen menu.
Select AssistiveTouch.
AssistiveTouch Menu
Home.

Refining Eye Gaze

Look at the following issues. Try one or more of the solutions. Sometimes, it is a combination that will help.

Issue	Solutions
Eye tracker does not detect eyes.	<ul style="list-style-type: none"> Be sure TD Pilot is charged and powered on. Make sure AssistiveTouch is enabled (follow setup procedure in the TD Pilot Getting Started Guide). Verify that the cable connecting the TD Pilot device to the iPad is securely plugged in. Check positioning of device and person. Review information on glare from glasses.
Accuracy is not good.	<ul style="list-style-type: none"> Check positioning of device and person, then recalibrate. Review solutions for problems noted below. More than one may apply.
Accuracy gets worse over time.	<ul style="list-style-type: none"> Recalibrate. Remember to check positioning before doing so. Look away or close eyes for a moment to recalibrate. Decrease brightness.

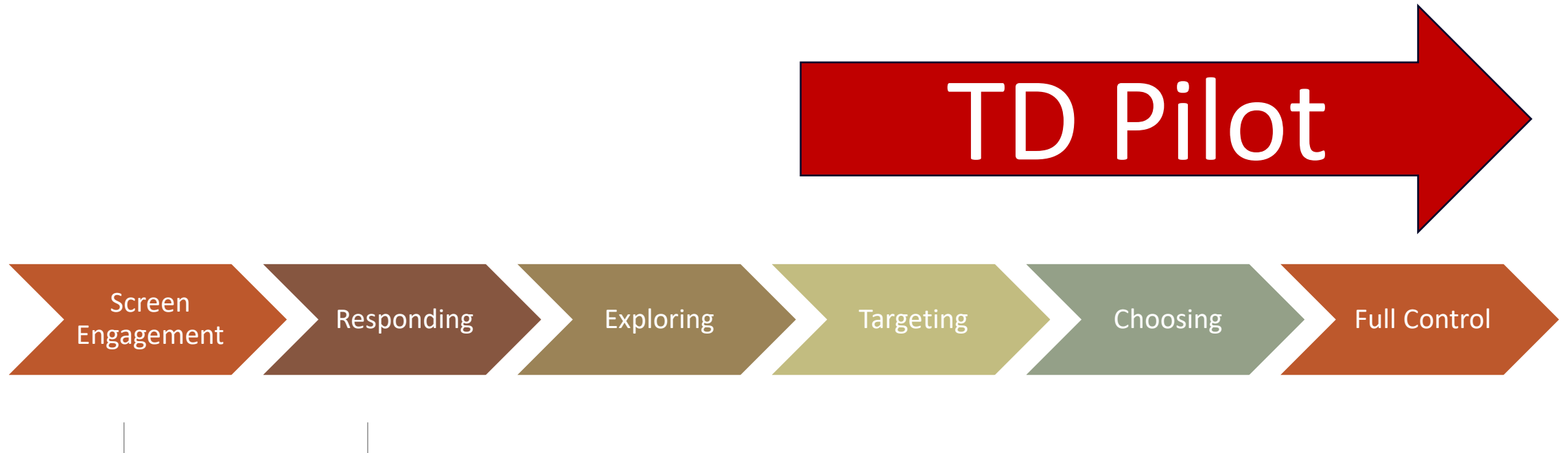


TD Pilot: For Emergent Users

Apps and Access

Learning to use your eyes to control

- Using eye gaze technology requires the control of eye movements, ability to switch between using your eyes to see and using your eyes to select, and the cognitive demands of the task
- The **Tobii Dynamox Eye Gaze Pathway** offer us a framework for developing eye gaze skills



For more detail watch

- Emergent Eye Gaze Webinar: An Introduction
- Introducing the TD Pilot – A Focus on Emergent Users

Recorded Webinar and Resources
<https://www.linkassistive.com/recorded-webinars/>



Key Features

Made for iPad

Apple logo
iPad OS

hello, how are you?
Partner Window

10hr +

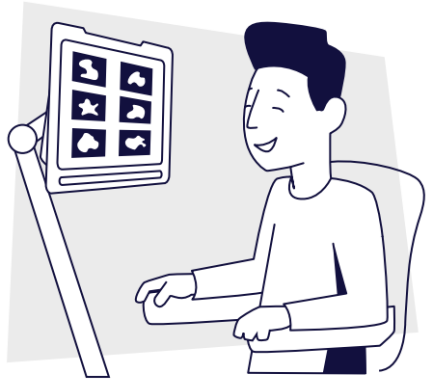
IS5TD

The Tobii Dynavox Advantage

TD Talk / TD Snap

Supports

tobii dynamox



TD Pilot with TD Snap

Getting Started Guide

tobii dynamox



TD Pilot with TD Talk

Getting Started Guide

tobii dynamox



TD Talk and AssistiveTouch

Training Cards

TD Pilot
User's Manual



tobii dynamox

Accessing the TD Pilot

- **Product demo to clients, teams in person, via Zoom**

- **Free 3 week loan**

<https://www.linkassistive.com/services/equipment-loans/>

- **3-6 month paid rental**




<https://www.linkassistive.com/services/equipment-rentals/>

- **Quotes for purchase \$16,695 + shipping**

- **Product support**

<https://www.tobiidynavox.com/pages/product-support-td-pilot>

Meet Our Eye Gaze Devices

				
Features	EyeMobile 5 with Surface Pro	Tobii Dynavox I-13	Tobii Dynavox I-16	TD Pilot
Purpose Built For	Mobile Computer Access	Dedicated speech generating device	Dedicated speech generating device	Dedicated speech generating device
Eye Control Software	Computer Control	Computer Control	Computer Control	TD CoPilot
Communication Software included	Additional purchase	Snap+Core First, Snap Scene, Communicator 5 inc accessible apps	Snap+Core First, Snap Scene, Communicator 5 inc accessible apps	TD Talk TD Snap
Other Software included	Gaze Viewer	Accessible Literacy Learning Magic Eye Fx (10 games) Gaze Viewer	Accessible Literacy Learning Magic Eye Fx (10 games) Gaze Viewer	x
Optional Software	TD Snap, Snap Scene, Communicator 5, Grid 3, Look to Learn, Eye Fx, Look to Read, Accessible Apps	Grid 3, Eye Fx, Look to Learn, Look to Read	Grid 3, Eye Fx, Look to Learn, Look to Read	x
Eye Tracker Unit	Tobii EyeChip (IS5)	Tobii EyeChip (IS5)	Tobii EyeChip (IS5)	Tobii EyeChip (IS5)
Working Distance	50-95 cm	45-85 cm	45-85 cm	45-85 cm
Trackbox (WxHxD)	20 x 20 – 35 x 35 cm	20 x 15 – 35 x 30 cm	20 x 15 – 35 x 30 cm	20 x 15 – 35 x 30 cm
Screen Size	12.3"	13.3"	15.6"	12.9"
Speakers (communication)	x	✓ 2x 10 W	✓ 2x 10 W	✓ 2x 10W
Partner Window	x	✓	✓	✓
IR Remote Control	Additional product and USB adapter required (EyeR)	✓ Vishay TSMP77000 6 x IR Transmit Diodes	✓ Vishay TSMP77000 6 x IR Transmit Diodes	x
Microphone	x	✓	✓	x
Switch Connector	Additional product required - X 2 with SwitchIT Connector	✓ x 2	✓ x2	✓ x 2 within case connected to iPad via Bluetooth

Link Assistive is an Australian supplier of Sensory, Interactive and Assistive Technologies. Augmentative and Alternative Communication (AAC) devices and software, computer access products, products for Special Education and mounting equipment are part of our product portfolio. Three week free-of-charge equipment trials are available for most products. For further details and technical specifications of the products below please see our website: <https://linkassistive.com> or contact one of our team Ph: 08 7120 6002 Email: office@linkassistive.com

