

Assessing for and Prescribing Bathing and Toileting Aids

Medical Aids Subsidy Scheme

10 November 2022



Queensland
Government

Session Outline

Assessing for bathing and
toileting aids

Selecting assistive
technology and features

Applying for bathing and
toileting aids through MASS

Adjusting & maintaining
bathing & toileting aids

With a focus on equipment available
through MASS

Queensland Health

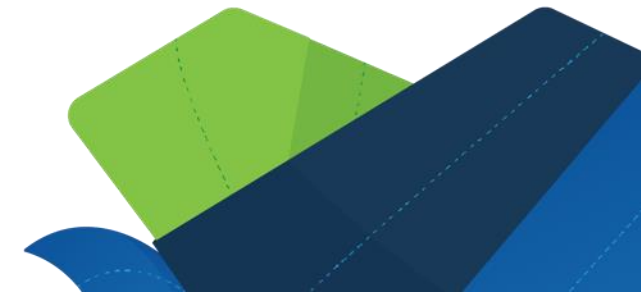
Assessing for bathing & toileting aids



Queensland
Government

Bathrooms – beware!

- Bathing is one of the highest risk home activities for older adults⁶
- Two areas in the home are particularly hazardous for injurious falls – bathrooms and indoor/outdoor stairs¹
- Approximately 15% of falls by older adults happen in the bathroom; 70% occurring during bathing transfers⁶
- Personal factors + extrinsic risk factors (object-filled environment, wet floor, insufficient lighting, insufficient non-slip material in the bathroom, and use of loose rugs(bathmats)¹¹
- When falls occur in the bathroom, there is particular potential for morbidity and mortality, given the hard surfaces¹³
- Home hazard assessment and modification that is professionally prescribed for older people with a history of falling is beneficial³



Increased risks of injury for carers assisting with bathing and toileting^{6,8}

1. Coping with small spaces
2. Poor equipment-environment fit
3. Reliance on manual handling
4. The importance of normality
5. Unsteady and unpredictable clients

Toileting: Assisting unsteady/unpredictable clients:

- transfers on and off the toilet
- providing perineal care
- raising and lowering the pants

Bathing: Transfers in and out of the bath/shower, particularly

- lifting the legs over the edge of the tub
- assisting unsteady/unpredictable clients



Tasks completed with AT – toileting²

- Identify need to toilet
- Mobilise to / from toilet *
- Transfer to toilet / position over toilet ^{*,†}
- Undress / dress[†]
- Evacuate bowels / bladder
- Hygiene / wiping[†]
- Washing hands



* May be MASS eligible

† Can be particularly difficult for carers^{XX,7}



Tasks completed with AT – showering and hygiene²

- Identify need to shower / bathe
- Mobilise to / from shower / bath *
- Undress / dress[†]
- Transfer in / out of shower / bath ^{*,†}
- Washing all areas[†]
- Maintain position or reposition for showering tasks
- Drying
- Other activities (e.g., cleaning teeth, shaving)

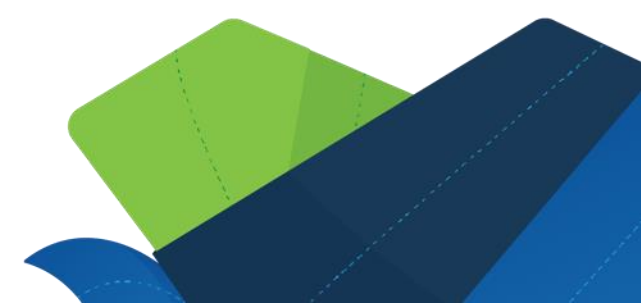


* May be MASS eligible

† Can be particularly difficult for carers^{XX,7}

Tasks completed with AT - assistive technology maintenance²

- Cleaning
- Inspecting
- Maintenance
- Storage
- Transporting for travel



Difficult walking or transferring to toilet



Static [bedside] commode



3-in-1 commode



Mobile shower commode (MSC) ± pan



MASS Eligibility

- Cannot effectively walk and/or transfer to toilet
- To allow close proximity toileting (e.g. falls risk at night)

Difficulty with bath or shower transfers

Swivel bathseat



Bathboard (non-standard)



Bath lift



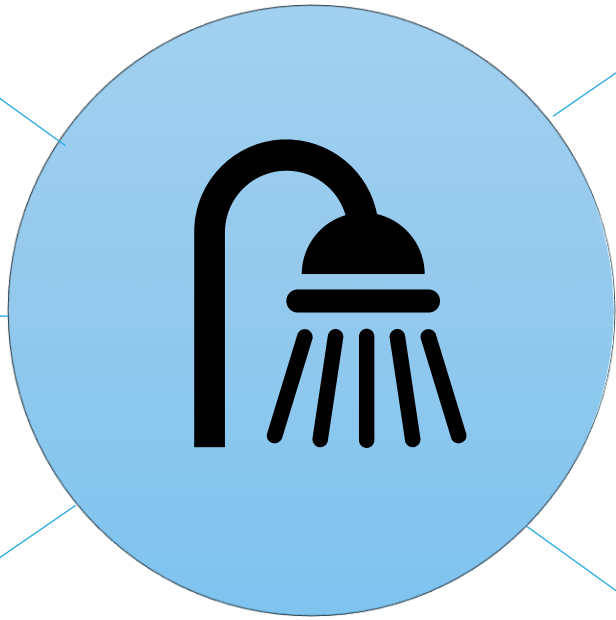
3-in-1 commode



Bath transfer bench



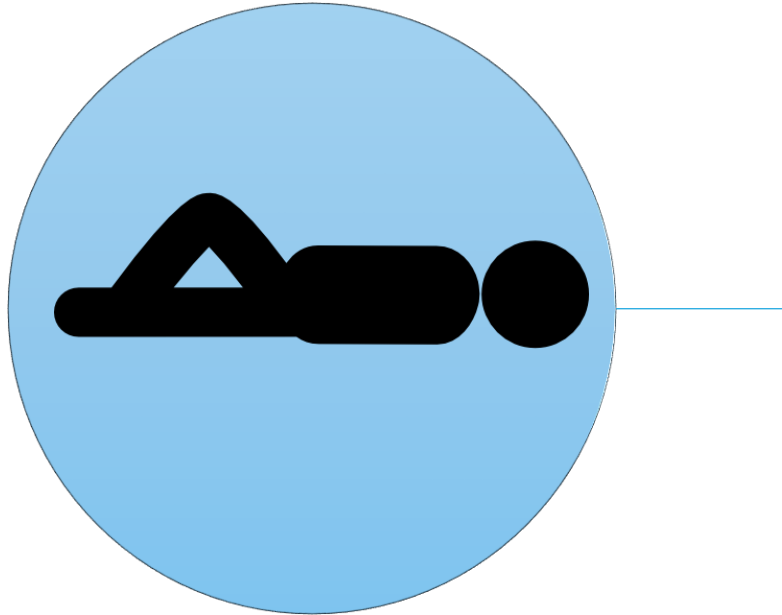
Mobile shower commode



MASS Eligibility

- Cannot effectively transfer to bath, shower over bath, or shower
- To facilitate transfer to existing bath or shower recess

Cannot sit (including in tilt) to shower



Shower trolley



MASS Eligibility

- Showering not possible in sitting or with a tilt-in-space mobile shower commode

Clinical Assessment

Client
diagnosis

Functional
abilities

Postural
support

Transfers

Bowel care
routines

Skin integrity

Carer needs

Environment



Example assessments

Spinal Outreach Team MSC Tool

SA DFC Equipment Program MSC Assessment Forms

CONTACTS
Ph: 3178 9507
Facsimile: 1800 624 632
Fax: 3178 9514

Email: spout@health.sa.gov.au
Web: www.health.sa.gov.au/dfc

Post: PO Box 6883 Burnside SA 5152
Location: 3rd Floor, Burnside Village Ctr
Cornwall St & Ipswich Rd Burnside, SA 5152

Spinal Outreach Team

4.2 Lower limb ROM assessment
Aperture width suggestion = IT width + 70mm. *Average* IT width approx 135mm

4.3 Postural Alignment*

Notes:

*Consider the need for a full postural assessment in supine and sitting to determine whether posture is flexible or fixed and whether it is specific to the MSC. Refer to NSW Health released MAT Form <http://www.health.nsw.gov.au/assessments/physical-assessments/dfc-assessment-2> and DFCEP practice and testing measuring module www.health.sa.gov.au/dfc for more information.

CONTACTS
Ph: 3178 9507
Facsimile: 1800 624 632
Fax: 3178 9514

Email: spout@health.sa.gov.au
Web: www.health.sa.gov.au/dfc

Post: PO Box 6883 Burnside SA 5152
Location: 3rd Floor, Burnside Village Ctr
Cornwall St & Ipswich Rd Burnside, SA 5152

Spinal Outreach Team

PART 5: ASSESSMENT OF CURRENT MSC

5.1 Source
Funding source: _____ MASS plaque number: _____

5.2 Frame type
Describe commode: _____

5.3 Seat dimensions
Use this form or download full sized SPOT seat templates here <http://www.health.sa.gov.au/dfc/html/equipment.asp>

Dimensions	Current	Required
1. Seat width	mm	mm
2. Seat depth	mm	mm
3. Aperture length	mm	mm
4. Aperture width	mm	mm
5. Aperture location (from rear of seat)	mm	mm
6. For opening or bite: Width	mm	mm
7. For side opening or bite: Location (distance from rear of seat)	mm	mm
8. For side: Bite depth	mm	mm

5.4 Seat composition
Padding thickness & condition (e.g. custom thickness, extra padding around aperture rim)

Seat cover type & condition (e.g. two way stretch, four way stretch, darter, vinyl any tears, puckering / other damage), _____

DFC Equipment Program: Adults
Mobile shower / commode chair assessment form

Government of South Australia
Department for Families and Communities

Client name: _____ Sex: M F DOB: _____
Address: _____ Phone No: _____
Clinician: _____ Agency: _____ Date: _____

Height: _____ Weight: _____

MEDICAL HISTORY Dx/prognosis: _____

EQUIPMENT CURRENTLY USED _____

PHYSICAL STATUS
Skin history/Integrity (note areas of present and past breakdown): _____

Spasticity/tremor (note when it occurs, how it affects function): _____

Upper limb function: _____

Lower limb function: _____

Balance/trunk control (static and dynamic): _____

Sitting posture: _____

FUNCTIONAL STATUS
Mobility: Ambulation status: _____
Mobile shower/commode chair use: Independent Assisted Dependent
Style: Large front wheel drive Large rear wheel drive Transit

Comments: _____

Transfers: Equipment/aids currently _____ Bed height: _____

Comments: _____

DFC EPI Adults: Mobile shower / commode chair assessment [Page 3 of 4](#)

Mobile shower / commode chair assessment form

MOBILE SHOWER/COMMODE CHAIR SPECIFICATION SHEET

Seating Options:

Seat Depth: _____ Seat Width: _____

Style: Curved, fixed, padded back Back rest height (see 305mm) Headrest
 Tie on seatback Extra seat padding Pommel Back rest extension (std)
 Open front seat Rear open Hand padded seat Reinforced seat base
 Right side opening Left side opening Standard seat Pelvic/seat belt
 Hand padded seat Custom hole size Back rest height (std 305)

Frame option:

Tilt-in-space Hydraulic Mechanical Forward tilt _____
 Custom recline Custom tilt _____
 Self-propel Transit 4 locking castors 2 locking castors

DFC EPI Adults: Mobile shower / commode chair assessment [Page 3 of 4](#)

Anthropometric measurements

Most equipment

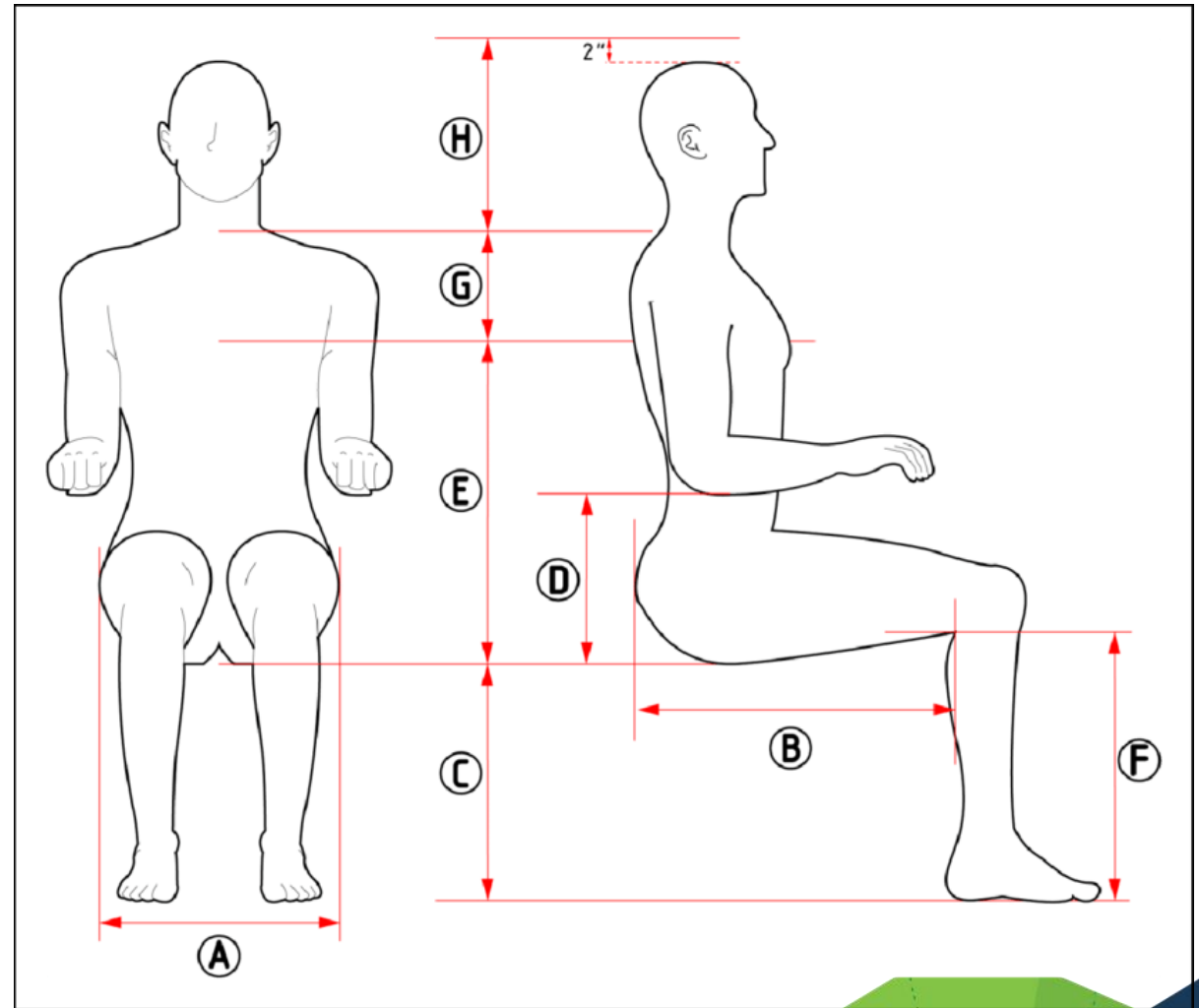
- Popliteal height
- Upper leg length
- Hip width
- Weight
- Height

Seats with arms

- Seat to elbow height

Seats with supportive backs

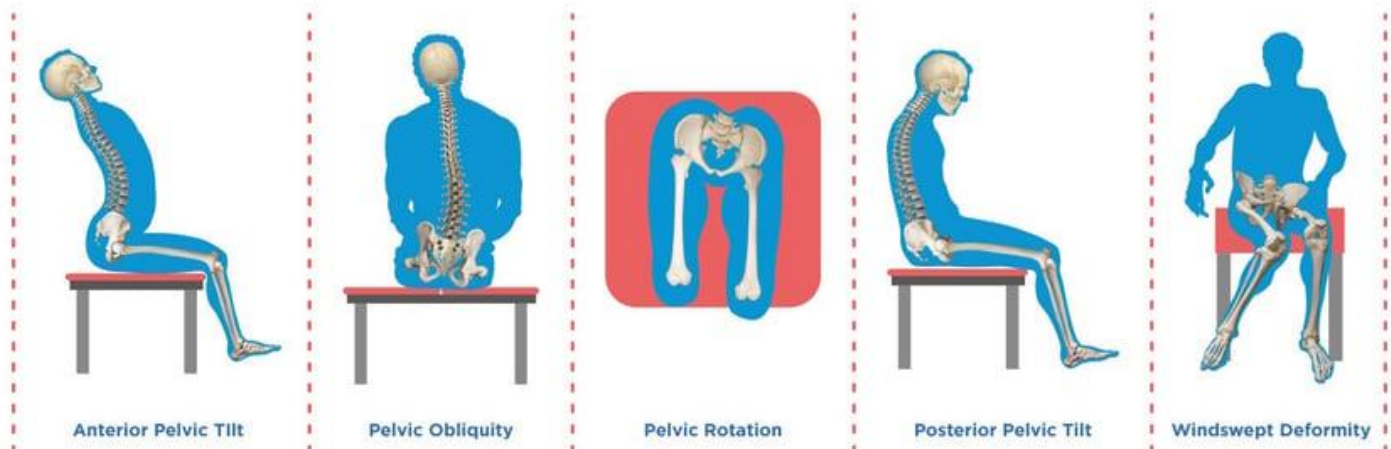
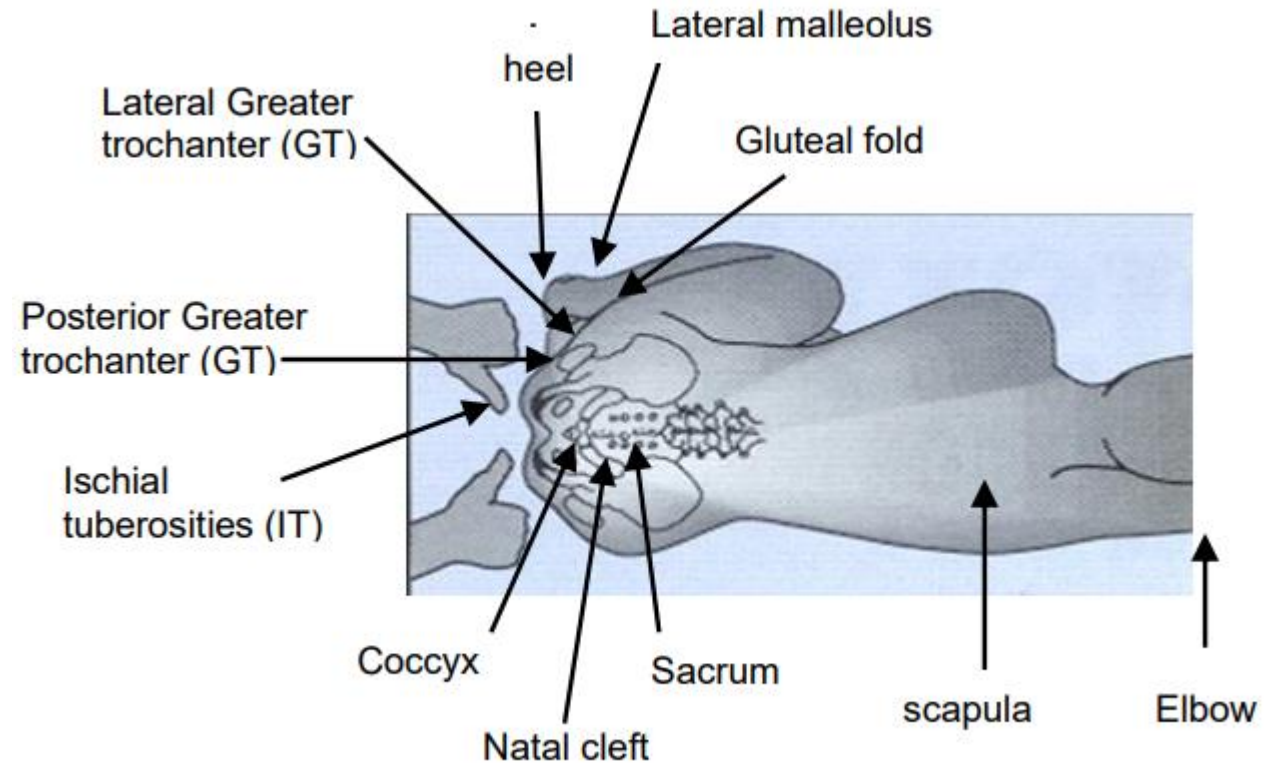
- Mid-shoulder height
- Neck height
- Occipital ridge height
- Seated height



Anthropometric measurements

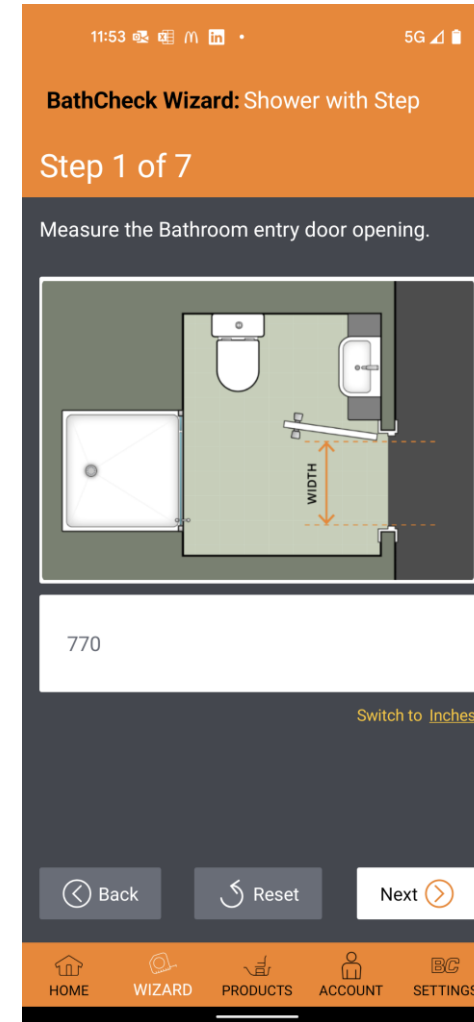
For complex or custom MSC seating

- Posture
- Width between ischial tuberosities
- Width between greater trochanters

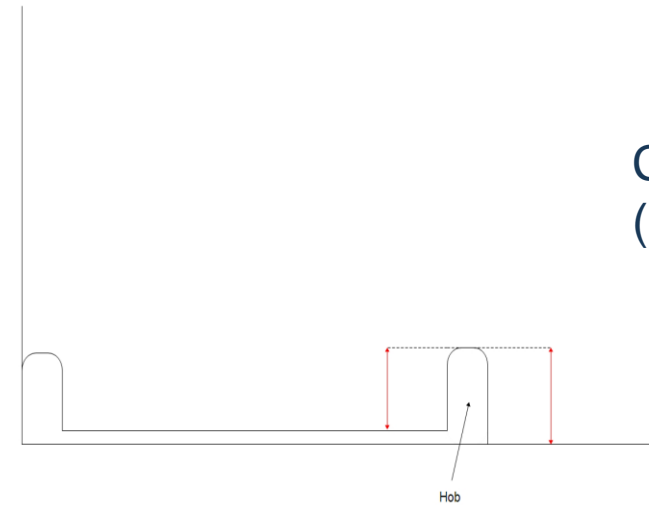
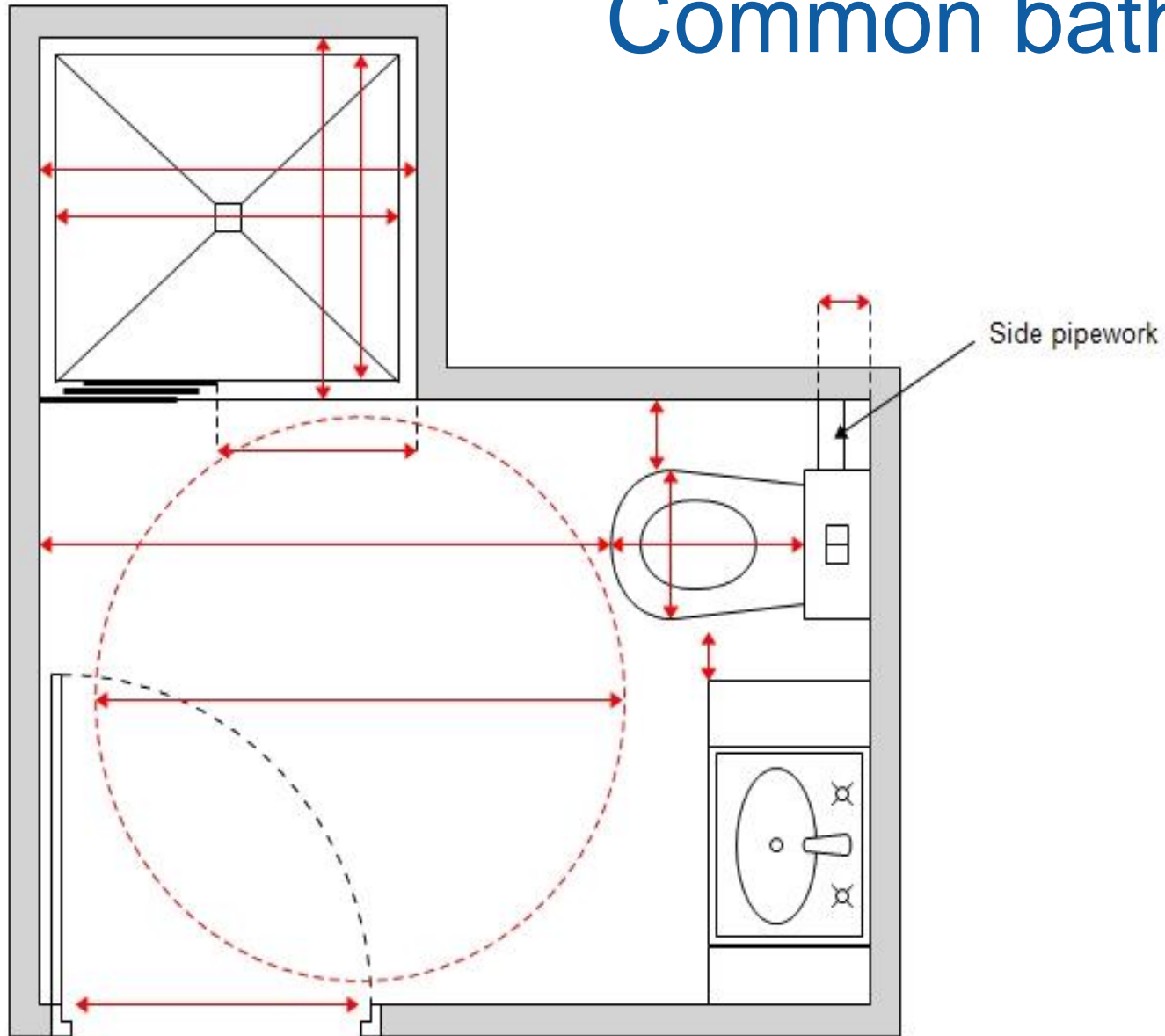


Measuring the environment

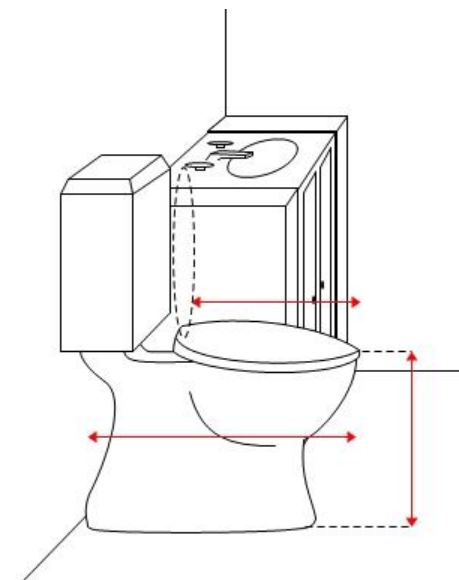
- Room dimensions
- Dimensions of fixtures (e.g., toilet)
- Clearance (e.g., doorways, under bench)
- Circulation
- Floor gradients
- Flooring types
- Heights of transfer surfaces



Common bathroom measurements



Common shower (profile) measurements



Common toilet measurements

Queensland Health

Selecting assistive equipment and features

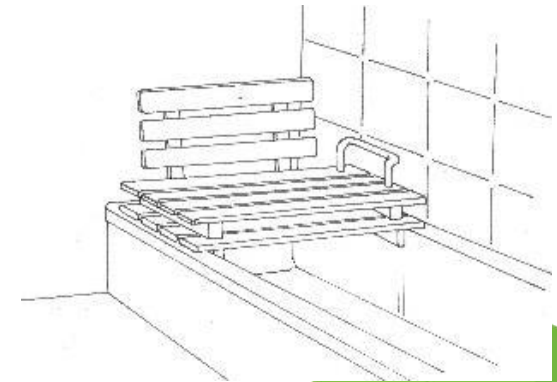


Queensland
Government

AT for bathing showering and toileting: SOA and non-SOA

SOA items:

- Static commodes
- 3-in-1 commodes
- Transfer benches
- Swivel bathseats
- Mobile shower commodes



Non-SOA items:

- Non-standard bathboards (raised, extended, backrest or padded)
- Bath lifts
- Shower trolleys

MASS Standing Offer Arrangement (SOA)

✓ Products listed are pre-approved for:

- Lawful supply in Australia → TGA → ARTG
- Minimum levels of quality / user safety / performance → Standards

SOA PRODUCT

APPROVED

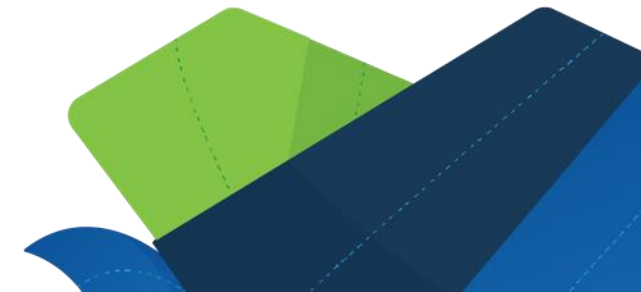
Applicable Standards	Bath Transfer Benches	Swivel Bath Seats	3-in-One / Static Commodes	Mobile Shower Commodes
AS/NZS 4069: 2013	✓	✓	✓	x
AS/NZS 3973: 2009*	✓	✓	✓	✓

*currently under review with Standards Australia, expected to be updated to 2023 shortly

All BTA categories must be made of corrosion resistant materials e.g. Aluminium or Stainless Steel

✓ Streamlined equipment approval

✓ Value for money



Non-SOA applications

NON-SOA PRODUCT

PENDING

Where products listed on the MASS SOA are NOT suitable for your Client, MASS individually assess applications – clinical and engineering review

- Clinical eligibility - adequate justification for MASS SOA unsuitability
- Engineering review – assessment is benchmarked against same requirements in place for SOA equipment, OR
 - Where SOA requirements are not readily met, further investigation:
 - Historical supply records
 - Regulatory - Current ARTG listing
 - Standards testing – level of compliance and test facility
 - Market research and industry/stakeholder considerations
 - Product inspection and risk assessment



Using MASS SOA product lists to shortlist equipment

[Daily living aid products and suppliers | Queensland Health](#)

Medical Aids Subsidy Scheme (MASS) Assistive Technology SOA effective 1st November 2014 - Extension 2019/20
Mobile Shower Commodes
MASS Assistive Technology SOA Product List - Last Reviewed: 23/09/2022
Please use drop-down arrows to sort items required. Select (ALL) to return to full list.

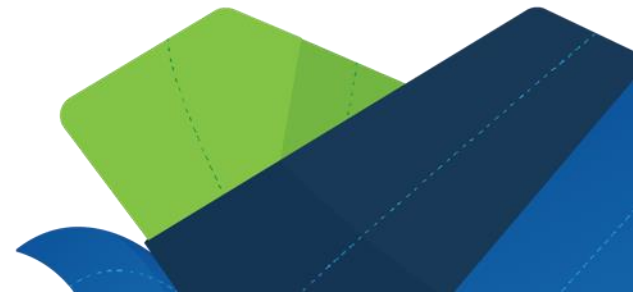
Supplier	Height Adjustable	Product Type	Product Brand	Seat Width	Product Name/Description	Product Code	Safe Working Load (kg)	Frame Price Within basic frame Subsidy
Active Medical	yes	Tilt	Juvo	460mm	Height adjustable - JH5046	1951J	200	Y
Aidacare	yes	Tilt	Aspire	460mm	Tilt and recline	410B100=36000	250	N
Country Care Group	no	Tilt	K Care	445mm	swing away footplates, left & right open frame	KA115SSO	200	N
Country Care Group	no	Tilt	K Care	445mm	swing away footplates with padded arms and padded side panels	KA115SRA	200	N
Country Care Group	yes	Tilt	K Care	445mm	Height Adjustable Tilt Swingaway Footrest Adult	KA11507-HA	200	N
Country Care Group	no	Tilt	K Care	445mm	REHAB Tilt Swingaway Footrest	KA11507-REHAB	200	N
Country Care Group	no	Tilt	Tubalco	460mm	Manual tilt/recline mobile shower chair	960TR	100	N
Elan Medical	no	Tilt	Tubalco	460mm	35 Degree Tilt	00-960	160	N

Example: Identifying a tilt-in-space mobile shower commode for a user with a 440mm hip width



Swivel bathseat considerations

- Bath design - width of bath and bath side edges to support the swivel bath seat
- Sitting back into the bathseat? Is there a gap between the bath side and seat edge?
- Can client raise legs high enough? Seat height raiser option may assist.
- Can client operate swivel mechanism, lock in place? Left and right hand options are available. Grab rails may assist with swivel.



Custom bathboards

- MASS does not fund standard bathboards
- MASS will only fund bathboards that are:
 - raised – increase height of bath to facilitate transfers
 - extended – section of bathboard extends outside of bath to facilitate transfers
 - padded – maintain skin integrity
 - bathboards with a backrest – client requires increased postural support
 - or a combination of these features



Elevated bathboard with rail



Raised bathboard with backrest



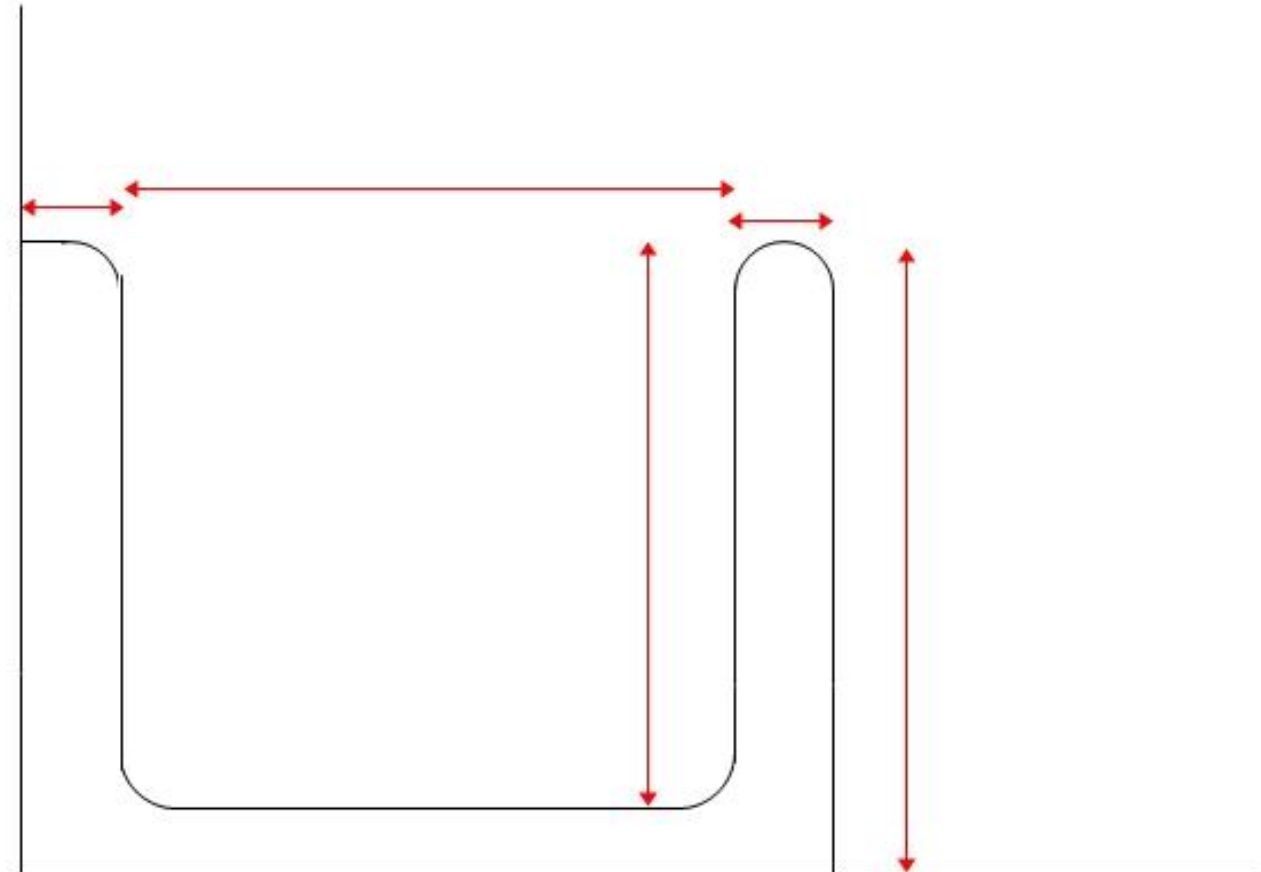
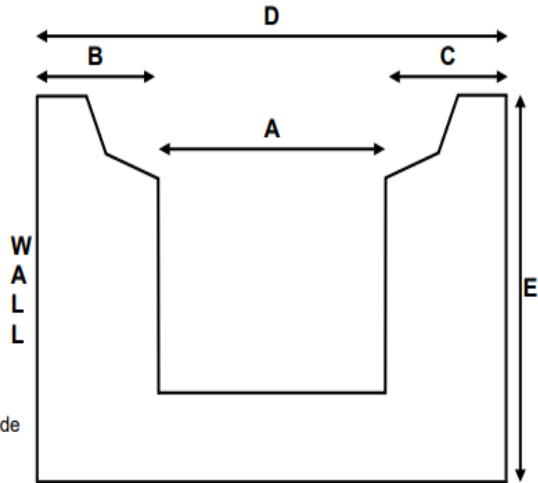
Extended bathboard

MASS23 Bathboard Specification Form

Common bath (profile) measurements for bathboards / bath lifts

Bathboard Requirements Accurate measurements are essential to ensure the correct item is supplied

- Measurement A** – inner width of bath
 mm
- Measurement B** – width of lip at wall edge
 mm
- Measurement C** – width of outer lip
 mm
- Measurement D** – total width from wall to outside bath edge
 mm
- Measurement E** – height of bath (floor to top – for extended bathboards)
 mm
- Shower screen present?**
 No Yes – measure C and D from inside edge of screen and provide measurement
 mm
- Raise Required?**
 No Yes – provide measurement: mm
- Style** (if applicable) Extended Padded Backrest
- When sitting on bathboard facing taps, what side is the wall on?** Left Right
- Provide details of any other significant details/features**
- Manufacturer/Supplier name** (used in trial)



Bath lifts (or hoists)

- Facilitate lower into and raise out of bath water
- Products can reduce depth of immersion by up to 100+mm due to mechanism – generally suited to deeper baths
- Wide variations in products:
 - Firm seat, sling seat, inflated cushion seat
 - No backrest, firm backrest, reclining backrest



Archimedes bath lift



Mangar cushion bath lift



AquaJoy bath lift with reclining backrest

Shower trolleys

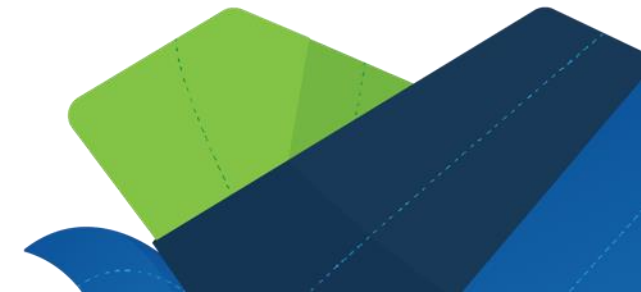
- Width for rolling to wash all areas and height of sides
- Height for carers to assist? Fixed height may be suitable for single user while height adjustable models are arguably more important in multiple user environments
- How to fill and drain? Outlet, hose, and tilt options available. Tilt may be useful for functional reasons also.



Aquarius Shower Trolley
adjustable height above and
fixed height below



Kerry Mobile Shower Trolley



MSC considerations

- **Seat height**

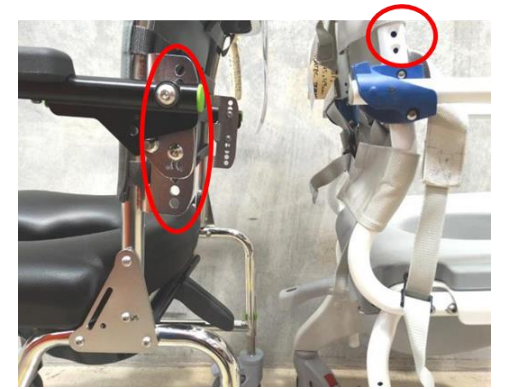
- User height
- Clearance of toilet bowl

- **Footrest:**

- Style and seat to footrest height
- Sliding platforms made to fit shorter lower leg lengths.
- Swingaway adjustable legrests better suited to tall people and those needing to maximise sitting area for pressure redistribution (thigh contact). Consider how they adjust. Some are tool-less e.g. RAZ, K Care and Aquatec
- Angle adjustable footrests

Other dimensions may not be as critical, depends on user, time seated

- **Back height** to at least apex of thoracic spine important if using seat tilt
- **Back height** and shape to fit user: Slung, tension adjustable and padded backrests



Raz tension adjust back

Armrest options

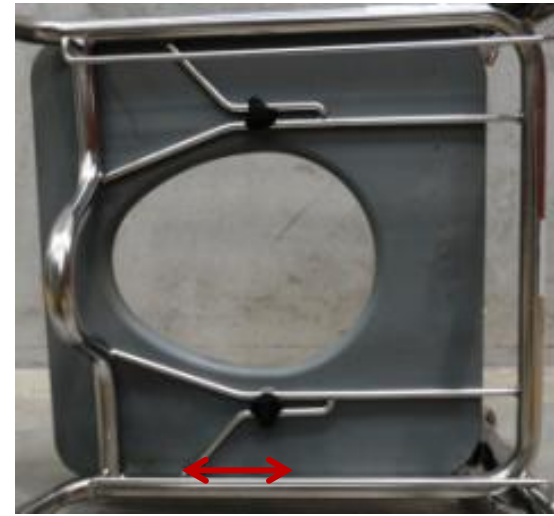
Consider the use, such as propping, pushing to stand, holding to lean for hygiene access

- Style
- Lock down
- Padded
- Longer/wider armrests provide more surface area for added comfort
- Arm troughs
- Armrest height adjustable on some MSCs



Seat fit

- To maximise seat depth to end of thighs or go with standard seat depth?
- Ischial tuberosities and coccyx in the aperture
- Seat alignment with some products
 - To align with pan
 - To fit user's sitting posture or body proportions



K-Care



Active Care JPTR



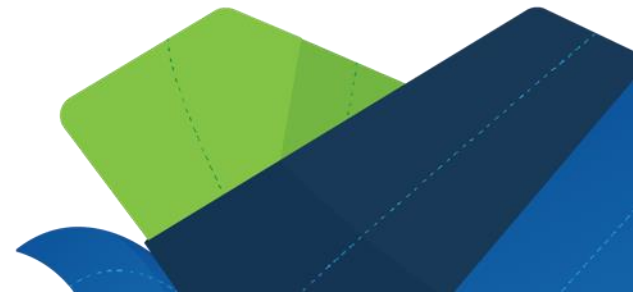
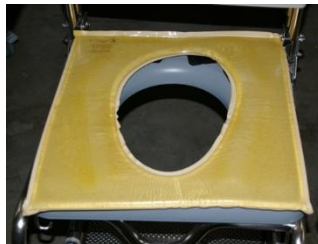
Raz padded seat (left) and bridge seat (right) with lowered coccyx section at rear

Seat materials

- Hand made padded
- Pressure redistribution seat



- Pressure redistribution cushions for MSC



Hygiene access

- **Side access:** easily achieved with Raz and some Juvo, others supply left/right to order
- **Rear access:** difficult to achieve with most models; lowering rear frame creates issue with over toilet access and pan/carrier



Raz



K-Care



Juvo

MSC feature options²

- **Under seat access**
 - “Bite” in seat design
 - Modification in MSC frame
 - Easier access for hygiene due to limitations of side access

- **Seat Design and Durability**
 - Custom made seats for pelvis and under seat access
 - Preference for a “cut out” or “bite”



MSC feature options²

- **Supportive and moveable armrests**
 - Moveable arms that do not interfere with independent transfers
 - Assists with stability and prevent overbalancing
- **Large rear wheels or castors**
 - Large rear wheels for self propelling
 - Larger wheels better handling for carers
 - Propelling difficult in MSC
 - Wheels become slippery and lose grip
 - Can be better for manoeuvring over threshold ramps
 - Do have a bigger turning circle



MSC feature options²

- **Portability**

- Folding frame
 - Heavy
 - Not easy to dismantle and re-assemble
- Did not have tilt in space option



- **Size and fit**

- Ensure fit of MSC within the home
 - Bed height, through doorways and in the shower
 - Over the toilet, checking fit over the toilet and distance from wall

Scripting

Raz-SP Australian Order Forms Effective September 1, 2020

Dealer / Location: _____ T: _____ F: _____
 PO# / Client: **MASS** Contact: _____ Email: _____

Raz-SP Self Propel Mobile Shower Commode Chair. Includes height-adjustable stainless steel frame, flip-up padded arm supports, foot supports, 22" or 24" rear wheels and two 5" dual-locking casters. Standard seat-to-floor height range is 20"-24" Exclusive to Raz, all seats include the Ischial Pelvic Alignment System (IPAS), which allows for 2" fore/aft adjustment. **User weight capacity 400 lbs.** Please enter special set-up requests, such as arm support height, in Notes [Sec.16].

1. Chair Codes by size – Must Choose One

- Z20018 Raz-SP w/ 18"W frame – Standard frame size, will fit over most toilets¹ ADD
- Z200 Non-Standard Width Raz-SP – Must add upcharge for custom frame width: see below ADD
 * add custom width to complete code (16/20/22)
 – Adjusta-Back must be selected for all custom frame widths [Sec.5]
- Z25W16 Upcharge for custom 16"W frame² – will not fit over most toilets ADD
- Z25W20 Upcharge for custom 20"W frame³ ADD
- Z25W22 Upcharge for custom 22"W frame⁴ ADD

¹ Fits all 18"W seats
² Visco-Foam Interface seats can be modified to fit.
³ 18"W seats can be selected but must also select Seat Support Adapter Kit Z455KAS [Sec.2]
⁴ Z4V23N Visco Foam Interface HD seat can be modified to fit. Seat depth range (IPAS) will be 18"-20".

Custom Base Frame Length and Height

- Z2LNGF3 Upcharge – custom 3" Longer Frame recommended for seat depths 20"/21", req for seat depths 21"-24" ADD
- Z2LOWF4 Upcharge for custom 4" Lower Frame – reduces seat height range to 16"-18" from standard height range of 20"-24" with molded seat ADD
 – To lower chair by an additional 1" (15"-17"), add 4" caster upgrade option Z645P [Sec.7]
 – Compatible only with 22" wheels [Sec.8]

2. Seats – Standard

Molded Seats (thickness "2.5"-3")	Visco-Foam Interface Seats (thickness "3.5")
<input type="checkbox"/> Z405 18"W x 16"D – Front Access ADD	<input type="checkbox"/> Z436BRI 18"W x 16"D – Front Bridged ADD
<input type="checkbox"/> Z410 18"W x 16"D – Front Bridged ADD	<input type="checkbox"/> Z436FRO 18"W x 16"D – Front Access ADD
<input type="checkbox"/> Z415 18"W x 19"D – Front Access ADD	<input type="checkbox"/> Z436LTO 18"W x 16"D – Left Access ADD
<input type="checkbox"/> Z420 18"W x 19"D – Front Bridged ADD	<input type="checkbox"/> Z436RTO 18"W x 16"D – Right Access ADD
<input type="checkbox"/> Z4SOM Shower-Only Seat – 18"W x 16"-21"D ADD	<input type="checkbox"/> Z436RRO 18"W x 16"D – Rear Access ADD
<input type="checkbox"/> Z4EJRM E&J Replica Seat – Molded – 18"W x 17"D ADD	<input type="checkbox"/> Z439BRI 18"W x 19"D – Front Bridged ADD
<input type="checkbox"/> Z4EJRV E&J Replica Seat – Visco Foam – 18"W x 17"D ADD	<input type="checkbox"/> Z439FRO 18"W x 19"D – Front Access ADD
<input type="checkbox"/> Z4V23N 23"W x 18"D HD – Front Access Notched at rear to maintain fore/aft adjustment range (IPAS) – 22"W frame ADD	<input type="checkbox"/> Z439LTO 18"W x 19"D – Left Access ADD
	<input type="checkbox"/> Z439RTO 18"W x 19"D – Right Access ADD
	<input type="checkbox"/> Z439RRO 18"W x 19"D – Rear Access ADD
	<input type="checkbox"/> Z455KAS Seat Support Kit for Raz-AP/SP – for seat 2" narrower than seat frame ADD
	<input type="checkbox"/> Z4G5B Custom Gimballed Seat Brackets – for adding dump angle (pr) Specify additional height at front of seat to complete code (1.0"/1.5"/2.0") ADD

Paragon - CUSTOM SEAT ASSESSMENT FORM

Client: **MASS PCEP** Chair Model: AP/SP AT CAT AP/SP600 AT600
 Reference #: _____ Serial #: _____

Access Opening: Select one if applicable

Bridged Front Front Open Left Open Right Open Rear Open

Aperture Shape: Select one

No Aperture Keyhole - Standard CAT - Style EJR - Style

Diagram: A - Seat Width, B - Functional Seat Depth (w/ 1" fore/aft adjustment), C - Seat Frame Width, D - Back Frame Width, E - Aperture Width (6.5" std), F - Aperture Depth (8.5" std), G - Access Opening Width (8.5" std), H - Aperture Location (2.5" std). Side Access Cutouts. AT Seat Frame Shown.

Notes:
 1. Keyhole Style Aperture Shown
 2. Specify Units (Inch mm)
 3. Seat width can be up to 2" wider than seat frame
 4. Call for other customization options

A	Seat Width:	20"	E	Aperture Width:	as per Z439FRO
B	Seat Depth:	as per Z439FRO	F	Aperture Depth:	as per Z439FRO
C	Seat Frame Width:	std	G	Opening Width:	as per Z439FRO
D	Back Frame Width:	std	H	Aperture Location:	as per Z439FRO

Comments: _____

Completing a script is essential to ensuring that the correct device is ordered.

MASS requires a copy of the script to assess applications and allow for direct reordering if required.

Example: Scripting for a tall person with a right-sided CVA and hemiplegia, carer access for perianal hygiene from left.

Fit to environment: overall dimensions

- Width and length
- Attendant propelled: swing legrests vs sliding foot platform
- Space for self propelled or tilt-in-space
- Options for non-modified bathrooms: require careful set up for slide-in systems



Fit to environment: alignment

Good alignment with standard toilet



Bar behind backrest holding chair forward with standard toilet



Back of seat colliding with disabled access toilet seat holding chair forward of toilet



Child width colliding with toilet pan



Fit to environment and user: height, width

- **Client:** Lowered height for transfers or hand/foot propulsion
- **Environment:** over toilet clearance
 - MSC have slight seat tilt, under seat clearance can be less at the rear
 - Runners for pan and carrier (see next slide)



Height adjustable MSC are available on SOA.

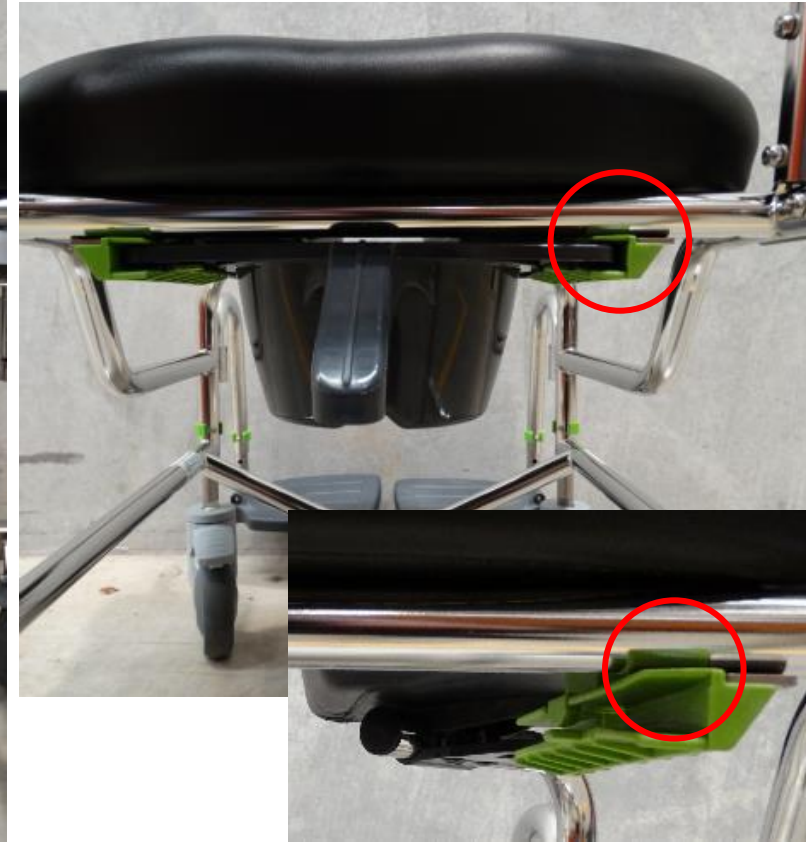
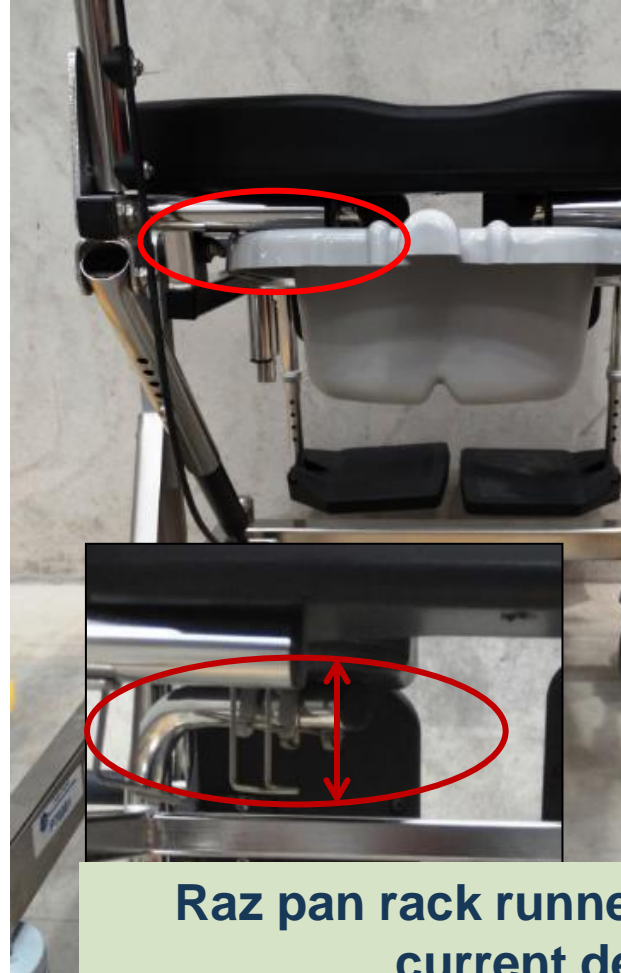
Custom height modifications require justification why height adjustable options not suitable

Frame modifications

\$300

To allow transfers, fit the user or enable function (can be used for custom widths)

Fit to environment: seat height clearance may be reduced by pan/bucket runners/rack – depends on height and/or width



Raz pan rack runners old style (above left) and current design (above right)

But does it fit the user? If pan/bucket is removed with user seated, male anatomy may be an issue if pan is higher up

not so much an issue of fit to the user, but an all important fit to the activity . . .

Containing waste! Pan/bucket and splash guards

Bed pan, bowl or bucket and carrier	\$140	To allow use as a commode
Splash guard or similar toileting fixture	\$160	To improve containment



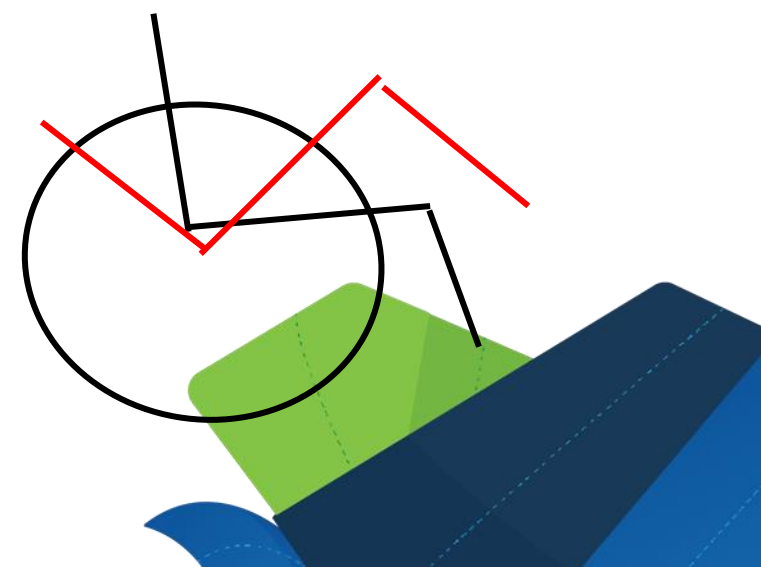
Standard pan (Left) bucket (middle) Raz pan (right)



Raz splash shield

Reasons for Using Seat Tilt

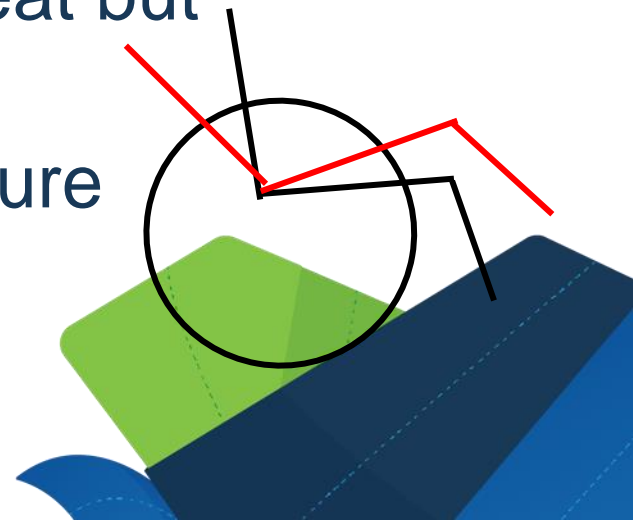
- Gravity assist to hold pelvis at rear of seat
- Useful in soapy/wet conditions to increase stability
- Assist to manage tonal issues
- Reduces vertical force on seat. Most significant reduction in pressure at 35° seat tilt or greater tilt angles⁴ and needs to last 3 minutes or longer to increase perfusion⁵
- Different mechanisms for seat tilt change demands on carers



Reasons for using seat tilt and backrest recline in mobile shower commodes

Recline:

- Can open seat to back angle to accommodate hip deformities
- May suit people with high tone (e.g. cerebral palsy), limited respiration (e.g. MND), large abdominal mass, decreased hip flexion
- Recline used without tilt will reduce vertical force on seat but increases shear
- Recline to 120° combined with tilt to 25° reduces pressure equivalent to what would be achieved with 35° tilt⁴



Queensland Health

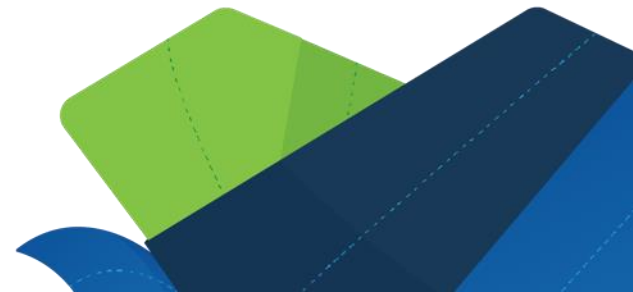
Applying for Bathing & Toileting Aids through MASS



Queensland
Government

MASS Application Guidelines for Bathing and Toileting Aids and Accessories

- MASS Application Guidelines for Bathing and Toileting Aids
- Application Guidelines for Bathing and Toileting Aids - Accesories and Modifications



MASS Daily Living Aids Website

Daily living aid products and suppliers | Queensland Health

Approved Suppliers

[Suppliers and Agents List \(PDF 332 kB\)](#)

MASS Daily Living Aids and Mobility Equipment Supplier and Agent List (health.qld.gov.au)



MASS-eApply

Medical Aids Subsidy Scheme

Home

[-] Queensland subsidy schemes

Medical Aids Subsidy Scheme

Rural and remote areas

[+] Prescribing medical aids and equipment

Aids provided through hospital programs

Repairs and maintenance

Clinical education

Contact us

MASS-eApply online applications for prescribers



MASS online applications

Designed to work across multiple platforms: computer/laptop, iPad, Android tablet or smartphone and across all MASS service areas.

User Guide: [Guide to Using MASS-eApply](#)

Website: [MASS-eApply online applications information FAQ](#)

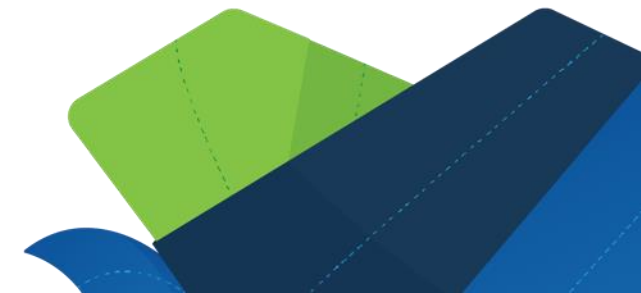
Prescriber Registration: <https://forms.health.qld.gov.au/#/vault>

Login: <https://forms.health.qld.gov.au/#/login>

MASS-eApply tutorials: <https://www.health.qld.gov.au/mass/mass-online-applications/mass-eapply-tutorials>

For enquiries and technical assistance (8am – 4pm weekdays):

MASS-eApply@health.qld.gov.au



MASS-eApply DLA Application for Bathing/Toileting Aids

Equipment Type:

Mobile Shower Commode (MSC)

The Assistive Technology SOA was updated in March 2022. Refer to the Daily Living Aids or Mobility Aids websites for the current SOA lists.

* Is the equipment requested on the current SOA Product List?

Yes No

Note: Please ensure you have entered the applicant's weight in the Prescriber Assessment page before selecting the product

* Please select from dropdown list:


ad|

- Aquatec | Ocean ergo XL self propelled - Height adjustable - Self Propelled (SP) - 480mm | 180kg
- Aquatec | Ocean ergo XL transit - Height adjustable - Attendant Propelled (AP) - 480mm | 180kg
- Aquatec | Ocean ergo self propelled - Height adjustable - Self Propelled (SP) - 480mm | 150kg
- Aquatec | Ocean ergo transit - Height adjustable - Attendant Propelled (AP) - 480mm | 150kg
- Juvo | Swing away footplate - Height adjustable - 1918J - Attendant Propelled (AP) - 510mm | 300kg
- Juvo | Swing away footplate - Height adjustable - JH2046-1 - Attendant Propelled (AP) - 460mm | 200kg
- Juvo | Swing away footplate - Height adjustable - JH4046-1 - Self Propelled (SP) - 460mm | 200kg
- K Care | Height Adjustable Swingaway Footrest Adult - Self Propelled (SP) - 445mm | 200kg
- K Care | Height Adjustable Transit Swingaway Footrest - Attendant Propelled (AP) - 445mm | 200kg
- Daz | Bariatric - Height adjustable - AD600 - Attendant Propelled (AP) - 23" | 270kg

* Please select from dropdown list:

juv

- Juvo | Bariatric - Sliding platform - JH3061 - Self Propelled (SP) - 610mm | 300kg
- Juvo | Bariatric - Swing away footplate - JH2056 - Attendant Propelled (AP) - 560mm | 300kg
- Juvo | Bariatric - Swing away footplate - JH2061 - Attendant Propelled (AP) - 610mm | 300kg
- Juvo | Bariatric - Swing away footplate - JH4061 - Self Propelled (SP) - 610mm | 300kg
- Juvo | Bariatric - Weight bearing platform - JH1056 - Attendant Propelled (AP) - 560mm | 300kg
- Juvo | Bariatric - Weight bearing platform - JH1061 - Attendant Propelled (AP) - 610mm | 300kg
- Juvo | Bariatric - Weight bearing platform - JH1066 - Attendant Propelled (AP) - 660mm | 300kg
- Juvo | Bariatric - Weight bearing platform - JH1066-1 - Attendant Propelled (AP) - 660mm | 400kg
- Juvo | Junior width - Swing away footplate - JH2041 - Attendant Propelled (AP) - 410mm | 200kg
- Juvo | Paediatric width - Swing away footplate - JH2036H - Attendant Propelled (AP) - 360mm | 136kg

* Do you wish to request this application be reviewed by a Clinical Advisor? 

Yes No

MASS-eApply Modifications and Accessories

Modification/Accessory Details (as itemised on supplier quote)

* Description (as per quote)	* Mod/Accessory Type	* Clinical Justification
<input type="text" value="padded armrests"/>	<div><input type="text"/><ul style="list-style-type: none">Additional braking castorsAdjustable backrest reclineAdjustable bracketryAmputee bracketsAnti-tipsArmrest options - e.g., safety flip, lock downArmrest modificationsBack reinforcement kitBackrest - slungBackrest - basic - tension adi/padded/flat/other</div>	<input type="text" value="Propping during hygiene tasks and support for stand transfers"/>

[+ Add Modification/Accessory](#)

[Back](#)

Queensland Health

Adjusting & Maintaining Bathing & Toileting Aids



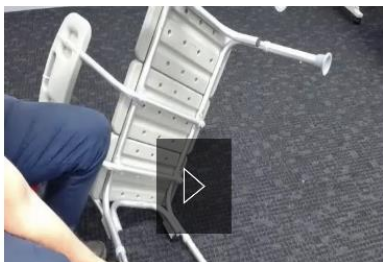
Queensland
Government

Maintaining & Adjusting Bathing /Toileting Aids

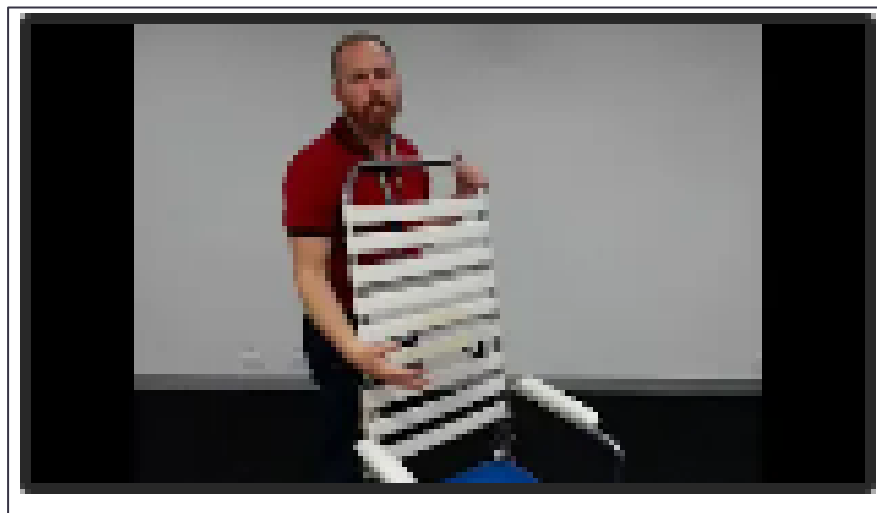
maintaining a bath transfer bench

Activity:

- Watch the video below
- Check the bath transfer bench for wear and tear
- Set the seat height at the ideal height for you
- Swap the backrest over to the other side (e.g., if the client is facing the other way in the bath)



Adjusting & maintaining a bath transfer bench



Adjusting a Tubalco tilt-in-space mobile shower commode



How to adjust the Aquatec Ocean Ergo Shower Chair

1,517 views Dec 19, 2019

Like Dislike Share Download Save ...

How to adjust the Aquatec Ocean Ergo Shower Chair

Queensland Health

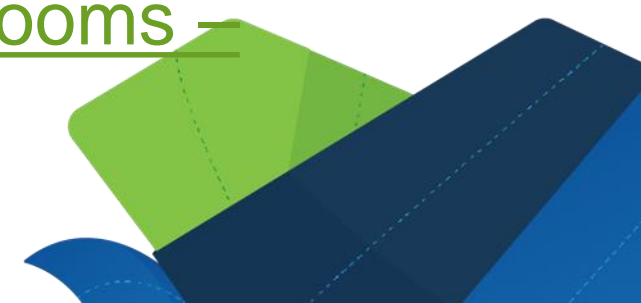
Further Resources and MASS Education



Queensland
Government

Resources

- [S-AD05: Prescribe, train and review use of toilet seating equipment \(health.qld.gov.au\)](#)
- [S-AD07: Prescribe, review and train use of shower seating equipment \(health.qld.gov.au\)](#)
- [SPOT Mobile Shower Commode Assessment and Prescription](#)
- [Tool for AT Practitioner Manuals | SWEP SA Equipment](#)
- [SA Equipment Program - Clinical Considerations for Prescribers](#)
- [The Role of Allied Health in Continence Management](#)
- [Practical Assessment for Home Adaptations: Bathrooms - YouTube](#)



AT in OT podcast

[ATinOT - Linktree](#)

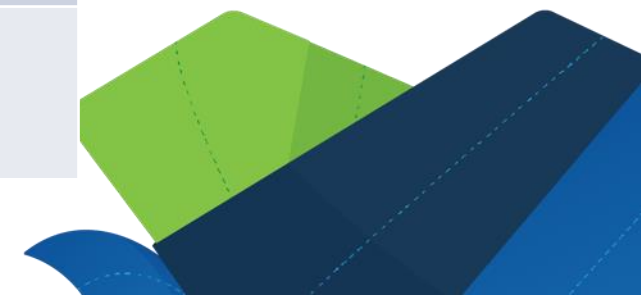
Episode 2: *What to know about continence aids: A discuss with Christine Leech (52mins)*

Includes considerations on mobile shower commodes and seats



Upcoming MASS CPD

DATE	TOPIC
30 November 2022	<u>Meeting the Assistive Technology, Continence and Pressure Management Needs of Bariatric Clients</u>
7 December 2022	<u>MASS-eApply in a Nutshell</u>
New, flexible	<u>Remote hands-on learning (PRCs)</u>
Coming soon	Wheelchair and seating workshop



References/Recommended Reading

1. Blanchet & Edwards (2018). A need to improve the assessment of environmental hazards for falls on stairs and in bathrooms: results of a scoping review. BMC Geriatrics. <https://doi.org/10.1186/s12877-018-0958-1>
2. Friesen, E., Russell, T.G. & Theodoros, D.(2015). Use, performance and features of mobile shower commodes: perspectives of adults with spinal cord injury and expert clinicians. Disability and Rehabilitation: Assistive Technology, 10(1), 38- 45. doi: 10.3109/17483107.2013.832413
3. Gillespie, L. D., Gillespie, W. J., Robertson, M. C., Lamb, S. E., Cumming, R. G., & Rowe, B. H. (2003). Interventions for preventing falls in elderly people. Cochrane database of systematic reviews, (4). doi: 10.1002/14651858.CD000340
4. Jan, Y. Maria A. Jones, M. Rabadi, M. Foreman, R. Thiessen, A. (2010). Effect of Wheelchair Tilt-in-Space and Recline Angles on Skin Perfusion Over the Ischial Tuberosity in People With Spinal Cord Injury Archives of Physical Medicine & Rehabilitation 91(11)
5. Jan, Y., Liao, F., Jones, M. A., Rice, L. A., & Tisdell, T. (2013). Effect of durations of wheelchair tilt-in-space and recline on skin perfusion over the ischial tuberosity in people with spinal cord injury. Archives of Physical Medicine and Rehabilitation, 94(4), 667-672. doi:10.1016/j.apmr.2012.11.019
6. King, E. C., & Novak, A. C. (2017). Centennial Topics—Effect of bathroom aids and age on balance control during bathing transfers. American Journal of Occupational Therapy, 71, 7106165030.
<https://doi.org/10.5014/ajot.2017.027136>



References/Recommended Reading

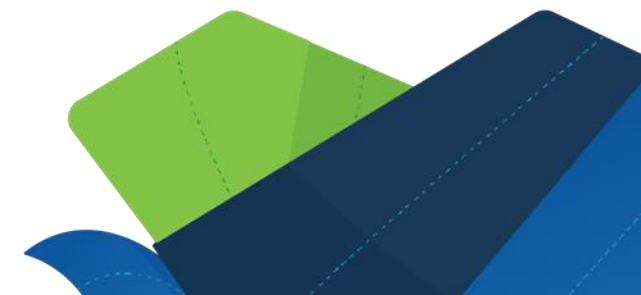
7. King, E.C. et.al. (2017). Assisting Frail Seniors with Toileting in a home bathroom: Approaches use by home care providers. *Journal of Applied Gerontology*, 1- 34. doi: 10.1177/0733464817702477
8. King, E.C., Holliday, P.J., & Andrews, G.J. (2018). Care challenges in the bathroom: The views of professional care providers working in clients' homes. *Journal of Applied Gerontology*, 37(4), 493-515. Doi: 10.1177/0733464816649278
9. Lök, N. & Akin, B. (2013). Domestic Environmental Risk Factors Associated with Falling in Elderly. *Iranian J Publ Health*, 42(2),120-128 <http://ijph.tums.ac.ir>
10. Morgan, R., & DiZazzo-Miller, R. (2018). The Occupation-Based Intervention of Bathing: Cases in Home Health Care, *Occupational Therapy In Health Care*, 32(3),306-318, doi: 10.1080/07380577.2018.1504368
11. Santos, P.H. et. Al (2020). Nursing diagnosis Risk for Falls in the elderly in primary health care. *Gerontological Nursing*. <https://doi.org/10.1590/0034-7167-2018-0826>
12. Sim, S, Barr, C.J. & George, S. (2015). Comparison of equipment prescriptions in the toilet/bathroom by occupational therapists using home visits and digital photos, for patients in rehabilitation. *Australian Occupational Therapy Journal*, 62, 132 – 140 doi: 10.1111/1440-1630.12121
13. Schellenberg, M. et.al. (2019). Falls in the Bathroom: A mechanism of injury for all ages. *Journal of Surgical* 234, 283 – 286. <https://doi.org/10.1016/j.jss.2018.09.044>



Questions & feedback



Complete the feedback form by scanning the QR code above of following [this link](#). You will receive a certificate of completion after completing the form.



Contacts

Sharon Clark, Principal Clinical Advisor Daily Living Aids

Sharon.Clark2@health.qld.gov.au (t: 3136 3527)

Leena Fraser, Clinical Advisor Equipment

Leena.Fraser@health.qld.gov.au (t: 4433 4589)

Bridget Manning & Kieran Broome, Advanced Clinical Educators (t:3136 3526)

MASS-Education@health.qld.gov.au

Equipment repairs (t: 3136 3524)

MASS-Equipment@health.qld.gov.au

MASS-Equipment-TSV@health.qld.gov.au

