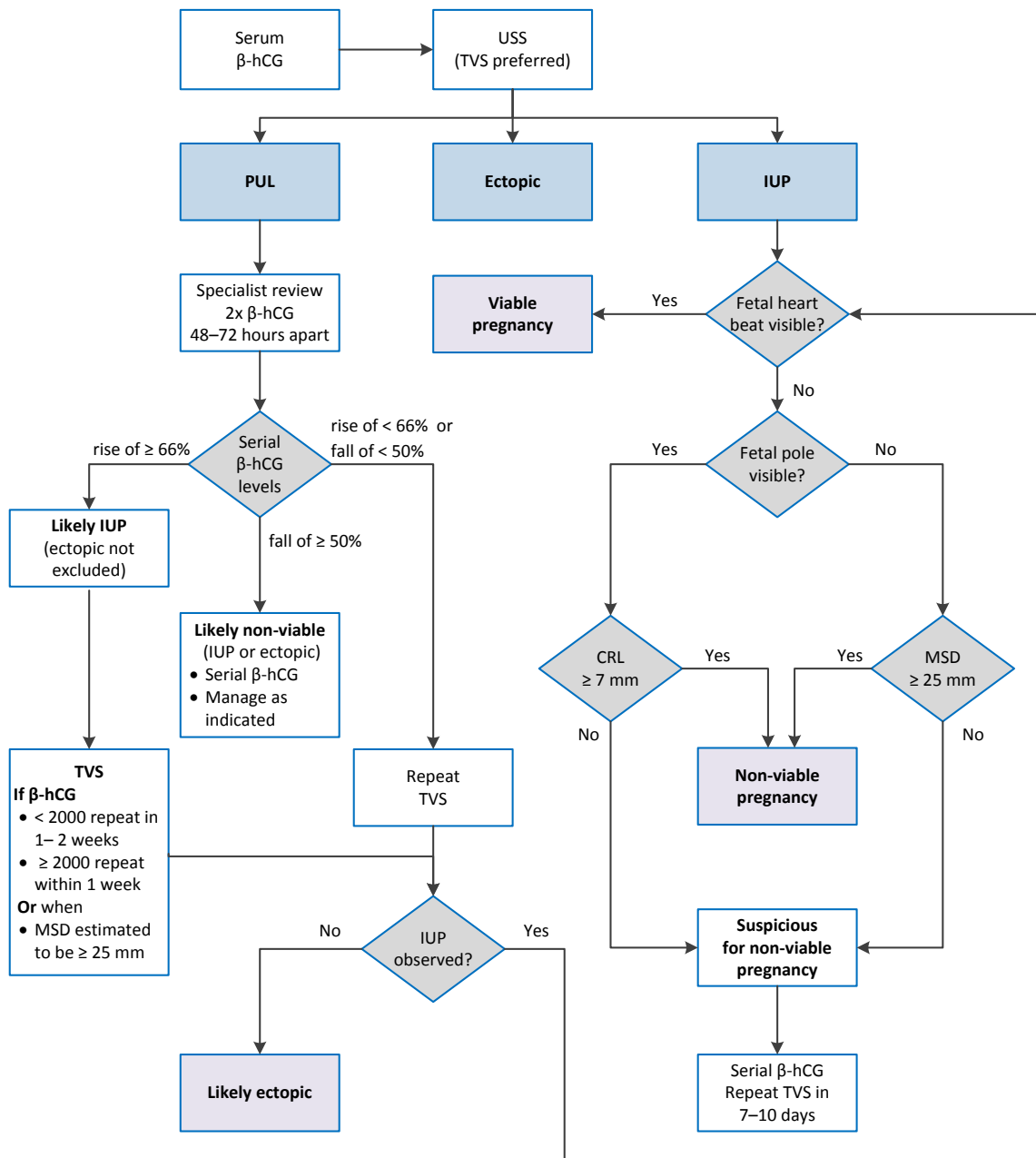


Assessment of location and viability in suspected early pregnancy loss

Use clinical judgement and consider the woman's individual circumstances when recommending management



Non viable diagnostic criteria (TVS)

- MSD \geq 25 mm and no fetus present
- Fetus with CRL \geq 7 mm is visible, but no fetal heart movements demonstrated after observation of \geq 30 seconds
- Absence of embryo with heartbeat \geq 2 weeks after a scan that showed a gestational sac without a yolk sac
- Absence of embryo with heartbeat \geq 11 days after a scan that showed a gestational sac with a yolk sac

TVS interval

- Estimate repeat TVS interval based on expected normal gestational sac growth rate of 1 mm/day

Worked example

- If MSD = 12 mm, repeat TVS in 13 days or more (12 mm MSD + 13 mm growth over 13 days equals expected MSD of 25 mm)

Queensland Clinical Guidelines: Early pregnancy loss F17.29-4-V4-R22

β-hCG: human chorionic gonadotrophin (all β-hCG measurements in International units/L (IU/L)), **CRL:** crown rump length, **IUP:** intrauterine pregnancy, **MSD:** mean sac diameter, **PUL:** pregnancy of unknown location, **TVS:** transvaginal scan, **USS:** ultrasound scan, **>:** greater than, **<:** less than, **≥:** greater than or equal to, **≤:** less than or equal to

State of Queensland (Queensland Health) 2017
<http://creativecommons.org/licenses/by-nc-nd/3.0/au/deed.en> Queensland Clinical Guidelines, Guidelines@health.qld.gov.au

