

COVID-19

Masks and face coverings

Don't

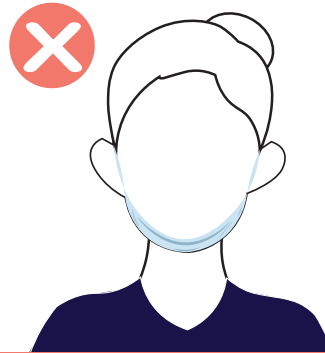
leave your
nose uncovered



leave your
chin uncovered



store your mask
under your chin

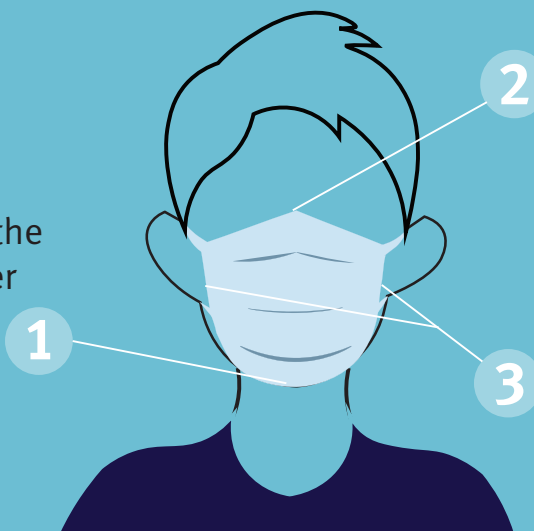


leave excess room
around your nose,
chin and cheeks



Do

extend the
bottom of the
mask under
your chin



2 make sure the top
of the mask sits
secure on the
bridge of your nose

3 ensure there are
no gaps along
your cheeks



- performing hand hygiene before and after touching or adjusting your mask
- remove mask by touching ONLY the straps, throw away, perform hand hygiene