

Pressure Mapping Remote Hands-On Learning Program

Information Sheet

What is the pressure mapping remote hands-on learning program?

The pressure mapping remote hands-on learning program is a blended delivery educational approach to support health professionals to develop basic competence in pressure mapping (with a focus on seating). Pressure mapping can be used with seating to;

- Guide the selection of pressure redistribution cushions alongside other clinical considerations.
- Guide recommendation for postural changes alongside other clinical considerations.
- Provide feedback to clients on the effectiveness of pressure relieving techniques.

The program is aimed at small groups of health professionals (e.g., clinical teams, workplaces, local networks of occupational therapists / physiotherapists) across Queensland who work with, or potentially work with, MASS-eligible clients. Features of the program are:

- Request to take part initiated by a small group of therapists with a nominated contact person. Learning groups can sign up for the program in their own time (subject to availability of the pressure mapping pack).
- When a kit becomes available, it will be couriered to the learning group on short-term loan (around 2 weeks). This allows hands-on interaction with the pressure mapping kit. Use with clients is allowable, provided that infection control principles are adhered to (e.g., covering mat with thin plastic bag during clinical use).
- Participants complete an online learning package delivered through Sway at their own pace. They can interact hands-on with the mat and pressure mapping software while accessing this learning.
- The learning group has the option to book a time as needed with the MASS Advanced Clinical Educator (Senior Occupational Therapist) to have interactive time to troubleshoot, clarify learning, ask questions and/or explore case studies.
- Participants complete a final quiz to assess their learning and once passed, receive a Certificate of Completion.

Who is eligible?

The learning group must:

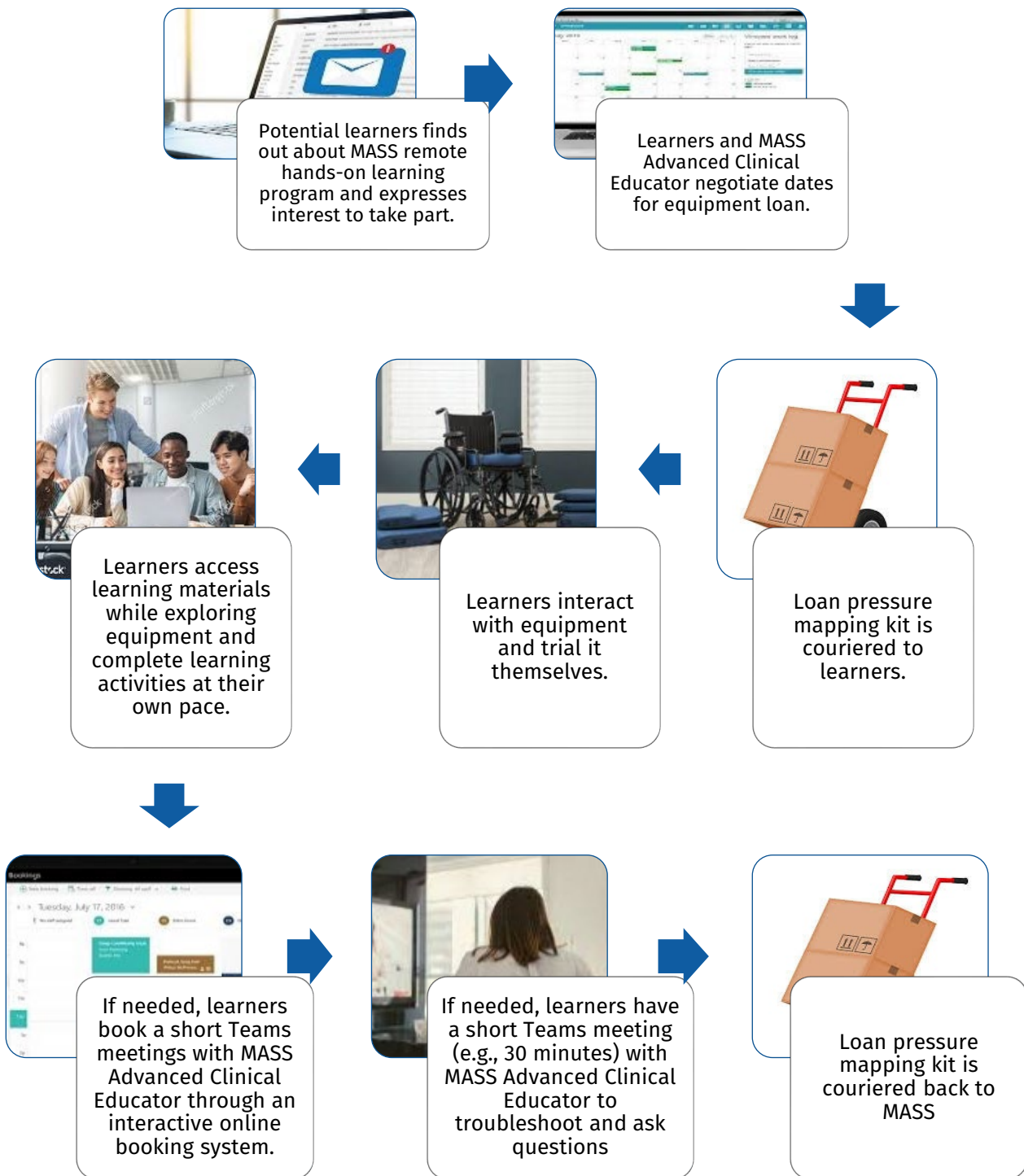
- Have at least three (3) participants who are occupational therapists, physiotherapists, rehabilitation engineers, registered nurses (remote sites only), or allied health assistants / therapy assistants.
- Live and work in Queensland. The delivery address for the pressure mapping pack must be in Queensland.
- Work with, or potentially work with, MASS-eligible clients.

Queensland Health and non-Queensland Health groups are eligible.

How much does it cost?

The pressure mapping remote hand-on learning program is currently free, with freight covered by the Medical Aids Subsidy Scheme (MASS). This will be reviewed to ensure the program is sustainable over time.

What is the process?



When will the program commence?

The program is anticipated to commence in March 2024. The program will be a rolling program and learning groups can be scheduled based on availability of the short-term loan pressure mapping kit. It is expected that there will be a waitlist to borrow the equipment.

How do we express interest in taking part?

One nominated contact person from the learning group should submit an expression of interest using our [online form](#).

The learning process

When your learning group is ready to start the learning process, they can access the online learning materials [here](#).

[Link to online learning materials](#)

Your learning group can start the online learning at any time, even before you get the kit. The first part of the online learning goes through the principles and process of pressure mapping, supporting evidence, and background knowledge to support your interpretation of pressure maps. The section “Using the pressure mapping kit” should be done while you have the loan of the pressure mapping kit.

Successful completion of the final competency quiz in the Sway (with a score of 70% or higher) will automatically generate a certificate of completion.

As the nominated contact person, you have the option of organising an online meeting of your learning group with the MASS Advanced Clinical Educator. You can do this quickly and easily through the interactive online booking calendar [here](#). Once you have booked online, you will receive a calendar invite via email with a Teams meeting link. You will need to forward this to the members of your team. The meeting is an opportunity for your team to troubleshoot, ask questions, and discuss pressure mapping in relationship to your caseload.

Returning the pressure mapping kit

Once you’ve finished with the pressure mapping kit, scan the QR code on the laminated sheet inside the kit. Complete the form to let us know the kit is ready to be collected. Once you’ve completed the form, you will automatically be sent a confirmation email with a MASS address form to print and put on the box. Tape the MASS address form to the top of the kit. For people outside of South-East Queensland, you will also have found a StarTrack Courier slip in the kit when you received it. You need to check/complete the details on the courier form and stick one (1) courier barcode to the kit. The form should be handed to the courier on collection. Completing the online form via the QR code will notify the MASS Warehouse to arrange for a Courier to be sent to pick up the box from your address.

Evaluation of the program

The pressure mapping kits have been funded with partial support from the Metro South Community & Oral Health Innovations Grant. We will be completing a research project evaluation the program. If the research project is running when you receive your kit loan, the MASS Advanced Clinical Educator will provide you with details around the research including a Research Participant Information Sheet and Consent Form.

Find out more

Contact MASS Advanced Clinical Educator, Kieran Broome by email (MASS-Education@health.qld.gov.au) or [booking a time for a Teams meeting](#).



© State of Queensland (Queensland Health) 2023
creativecommons.org/licenses/by/3.0/au

For more information contact:

Medical Aids Subsidy Scheme
Metro South Health
PO Box 281
Cannon Hill QLD 4170 Australia
Tel: (07) 3136 3526 or (07) 3136 3524
MASS-Education@health.qld.gov.au
health.qld.gov.au/mass/education