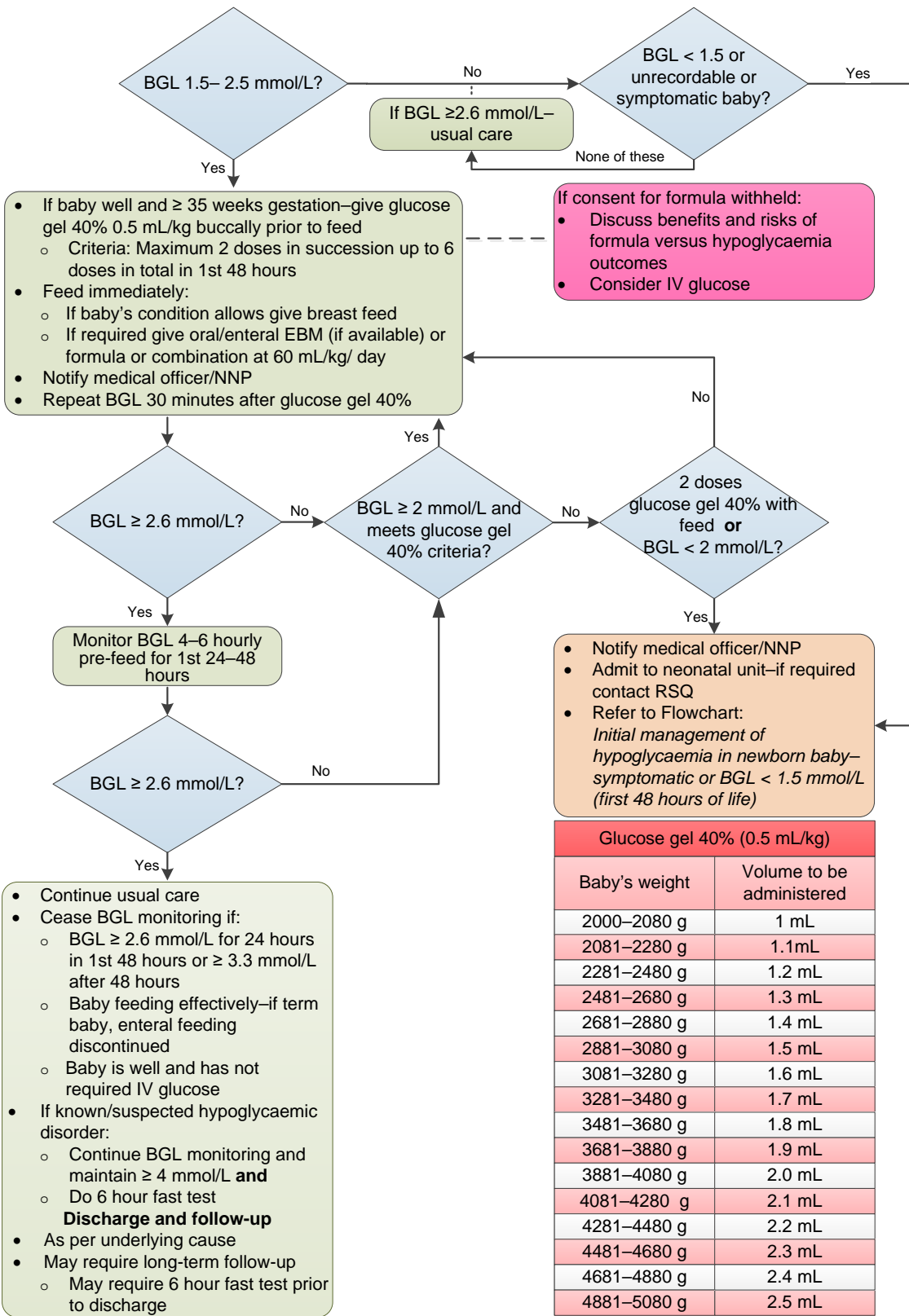


# Management of hypoglycaemic newborn baby (BGL 1.5–2.5 mmol/L)

Initial management of hypoglycaemic newborn baby (first 48 hours of life)  
BGL 1.5 mmol/L–2.5 mmol/L

Confirm any BGL < 2.6 mmol/L in blood gas machine, PoC analyser or laboratory



State of Queensland (Queensland Health) 2019  
<https://creativecommons.org/licenses/by-nc-nd/4.0/health> Queensland Clinical Guidelines, [Guidelines@health.qld.gov.au](mailto:Guidelines@health.qld.gov.au)



BGL blood glucose level, EBM expressed breast milk, IV intravenous, NNP neonatal nurse practitioner, < less than, ≥ greater than or equal to

Queensland Clinical Guideline. *Hypoglycaemia—newborn* Flowchart: F19.8-2-V6-R24