

Embolectomy and thrombectomy

ACHI 11th Edition Code Change!

July 2019

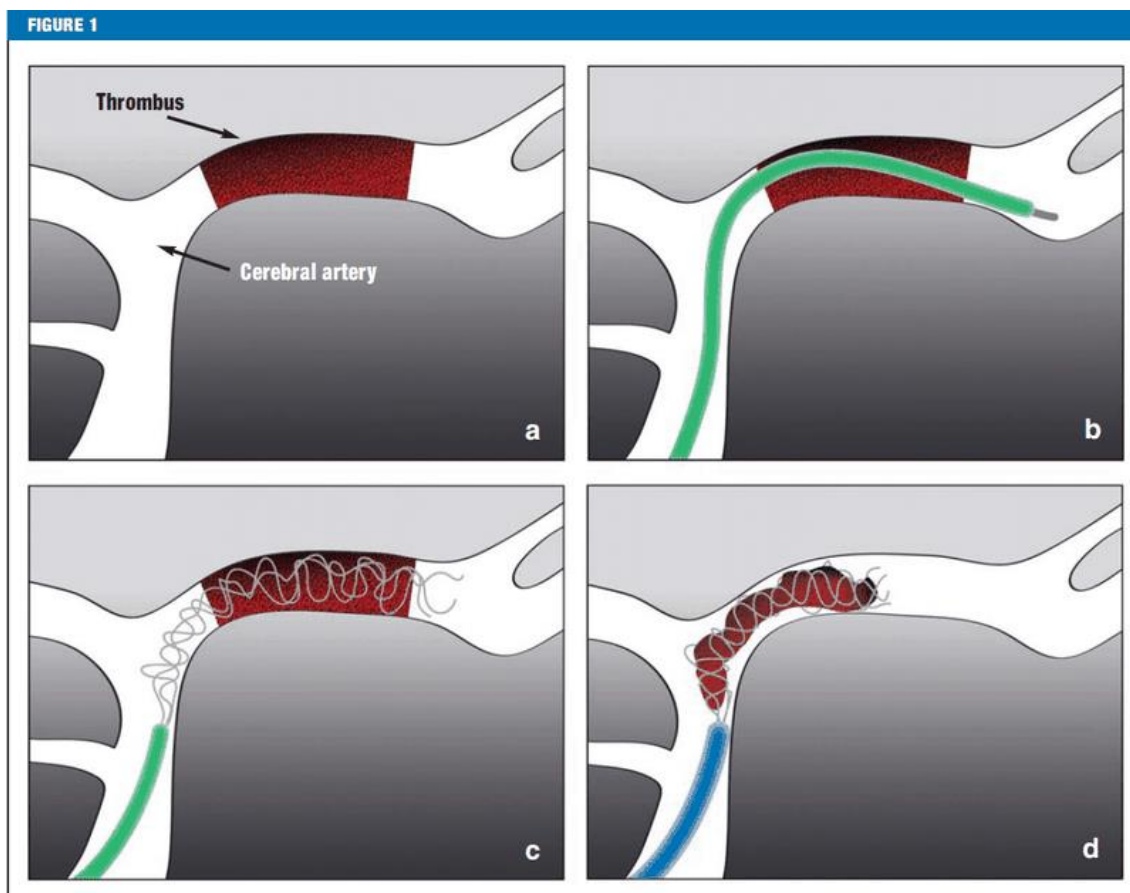
The codes for intracranial embolectomy/thrombectomy have changed for Australian Classification for Health Interventions (ACHI) 11th Edition.

ACHI 10th Edition codes:

- 90235-00 [702] Embolectomy or thrombectomy of intracranial artery
- 90235-01 [729] Thrombectomy of intracranial vein

ACHI 11th Edition codes:

- 35414-00 [702] Embolectomy or thrombectomy of intracranial artery
- 35414-01 [729] Thrombectomy of intracranial vein.



If there is a proximal thromboembolic occlusion of the middle cerebral artery (a), the stent retriever is run past the intra-arterial thrombus in a microcatheter (b). When the microcatheter is retracted, the stent retriever is pushed out and released inside the thrombus. After a few minutes, the stent expands into the thrombus so that the mesh of the stent hooks into the thrombus (c). The expanded stent, together with the whole thrombus, is then removed into a larger catheter (d).

Further information about mechanical thrombectomy in stroke can be found at:

<https://www.aerzteblatt.de/int/archive/article/173141/Mechanical-thrombectomy-in-stroke>